



# HIGH-QUALITY, HIGH-FUNCTION WAREHOUSE IN NW GEORGIA SUBMARKET

OXBOWRE.COM  
404.275.5794  
ATLANTA, GA



**250 Turner Blvd, Ball Ground, GA 30107**

**43,810 SF Total SF**  
**6,000 SF High-End Office**  
**3.67 Acres**  
**11 Loading Doors total**  
**6 Dock High doors**  
**5 Drive-in doors (3 grade level) + (2 ramped)**  
**19-22' clear height**  
**Heavy Power- approx. 750 Amps +**  
**3 Phase 208/120 AND 480/277 services**  
**3 sides Brick Construction + 1 side Brick on Block/Metal**  
**Full circulation**

### Location Details:

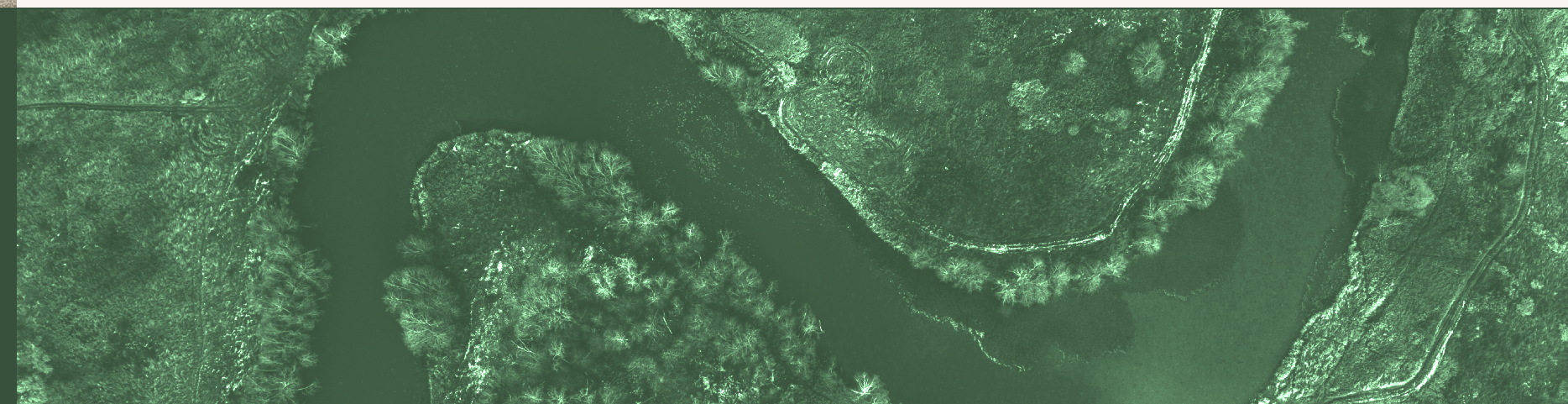
**575 Corridor of NW Georgia submarket**  
**Very low vacancy market**  
**Light Industrial Zoning**  
**Unincorporated Cherokee County**

**RACHEL CONDON**

**PARTNER**

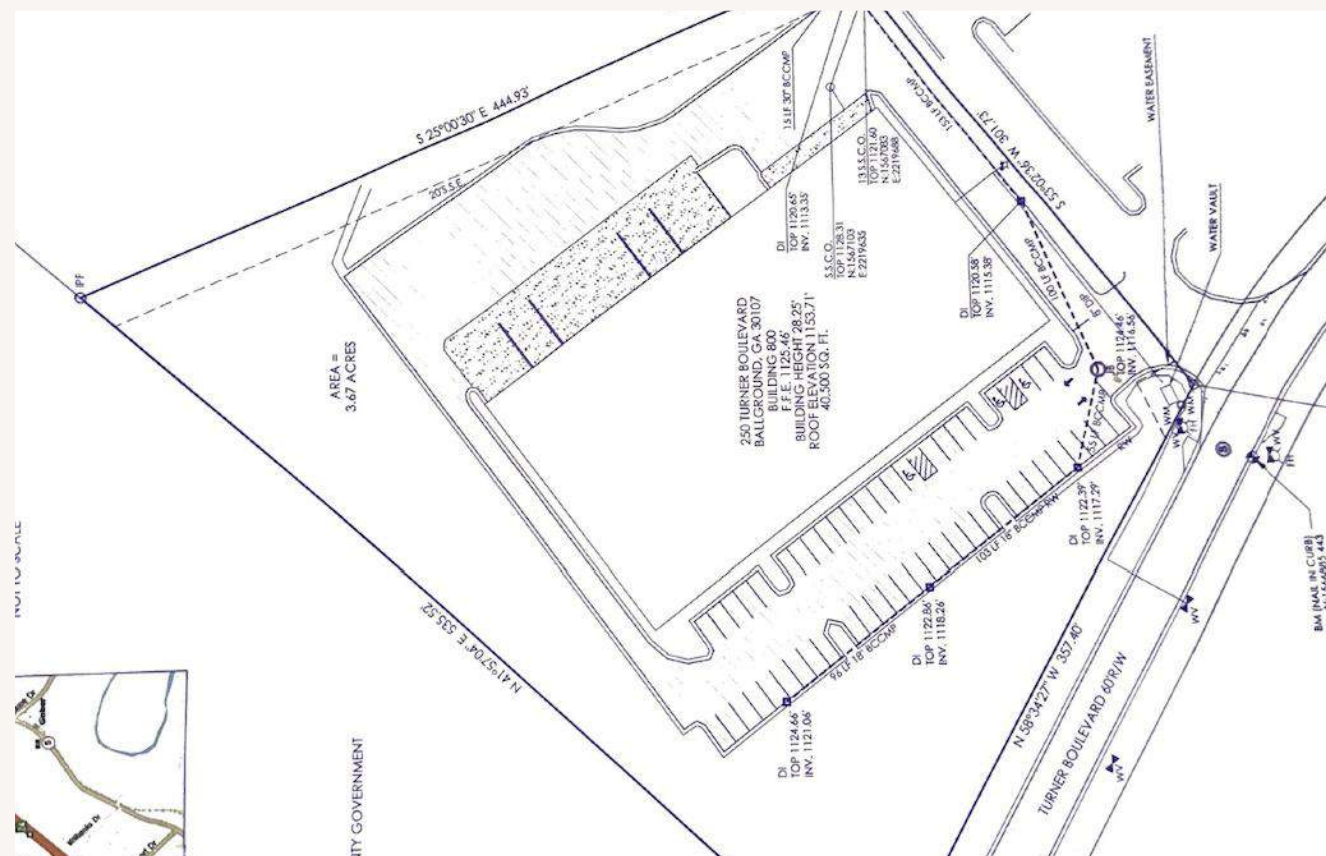
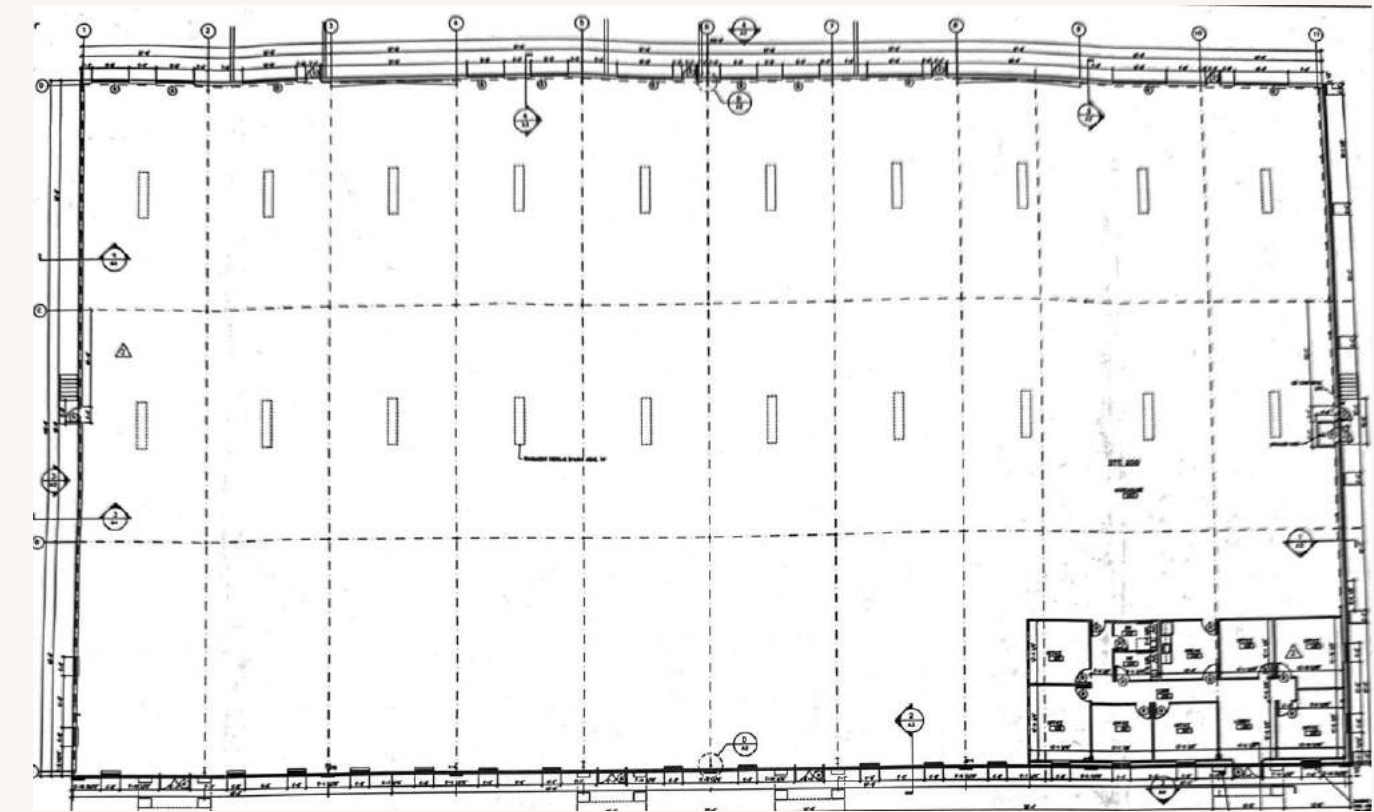
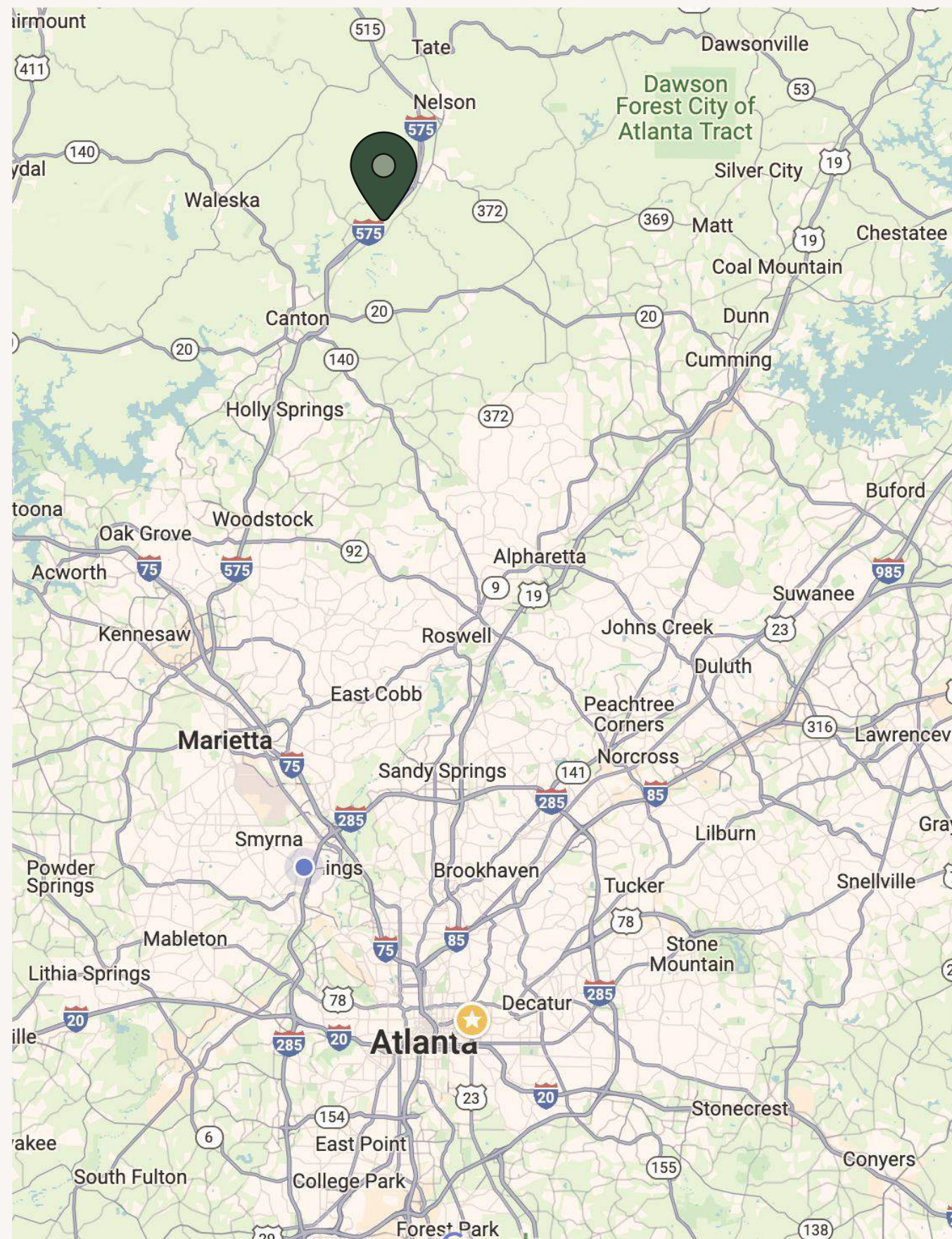
404.275.5794

[rcondon@oxbowre.com](mailto:rcondon@oxbowre.com)



# HIGH-QUALITY, HIGH-FUNCTION WAREHOUSE IN NW GEORGIA SUBMARKET

OXBOWRE.COM  
404.275.5794  
ATLANTA, GA



**RACHEL CONDON**  
PARTNER  
404.275.5794  
rcondon@oxbowre.com



©2024 OXBOW REAL ESTATE. ALL INFORMATION FURNISHED REGARDING PROPERTY FOR SALE, RENTAL OR FINANCING IS FROM SOURCES DEEMED RELIABLE, BUT NO WARRANTY OR REPRESENTATION IS MADE TO THE ACCURACY THEREOF AND SAME IS SUBMITTED TO ERRORS, OMISSIONS, CHANGE OF PRICE, RENTAL OR OTHER CONDITIONS PRIOR TO SALE, LEASE OR FINANCING OR WITHDRAWAL WITHOUT NOTICE. NO LIABILITY OF ANY KIND IS TO BE IMPOSED ON THE BROKER HEREIN.