

**INDUSTRIAL
FOR LEASE**

109,625 SF
TOTAL

UNDER
CONSTRUCTION

TWELVE (12)
WAREHOUSE
BUILDINGS



TRANSWESTERN

REAL ESTATE
SERVICES

EDEN INDUSTRIAL PARK

Kennedale, TX 76063

FENCED OUTSIDE STORAGE



Property Information:

- 12 Warehouse Buildings
- Spaces ranging 6,000 SF - 10,000 SF
- Fenced-Graveled Yard Space
- 3-Phase Heavy-Power
- 16' Clear Height
- Contact Broker for Price



[View in Google Maps](#)

For Information:

Lyndon Todd

817.528.6680

Lyndon.Todd@transwestern.com

Charlie McCollum

817.259.3513

Charlie.McCollum@transwestern.com

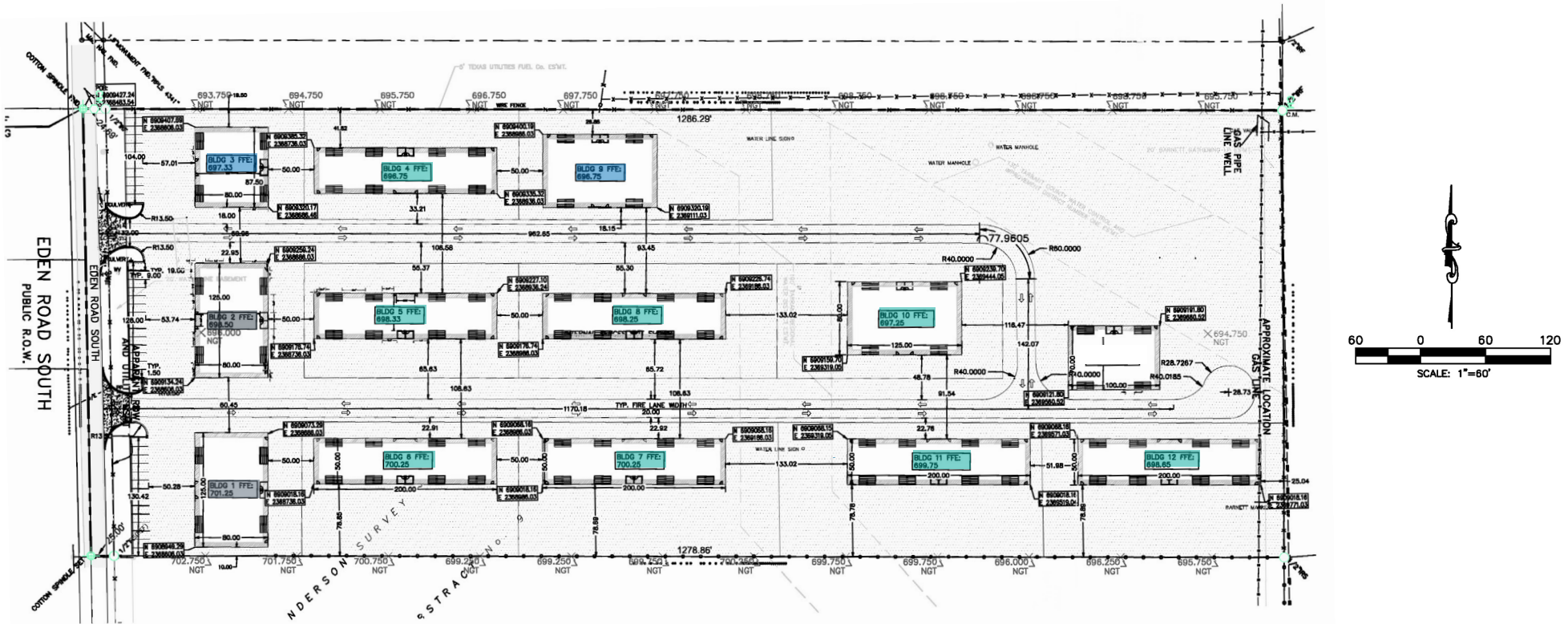
The information provided herein was obtained from sources believed reliable; however, Transwestern makes no guarantees, warranties or representations as to the completeness or accuracy thereof. The presentation of this property is submitted subject to errors, omissions, change of price or conditions, prior sale or lease, or withdrawal without notice. Copyright © 2025 Transwestern.

EDEN INDUSTRIAL PARK

Kennedale, TX 76063

TRANSWESTERN

REAL ESTATE
SERVICES



12 BUILDINGS = 109,625 SQUARE FEET

Bldg # 1	8,750 SF	Bldg # 4	10,000 SF	Bldg # 7	10,000 SF	Bldg # 10	10,000 SF
Bldg # 2	8,750 SF	Bldg # 5	10,000 SF	Bldg # 8	10,000 SF	Bldg # 11	10,000 SF
Bldg # 3	6,125 SF	Bldg # 6	10,000 SF	Bldg # 9	6,000 SF	Bldg # 12	10,000 SF

For Information:

Lyndon Todd
817.528.6680
Lyndon.Todd@transwestern.com

Charlie McCollum
817.259.3513
Charlie.McCollum@transwestern.com

The information provided herein was obtained from sources believed reliable; however, Transwestern makes no guarantees, warranties or representations as to the completeness or accuracy thereof. The presentation of this property is submitted subject to errors, omissions, change of price or conditions, prior sale or lease, or withdrawal without notice. Copyright © 2025 Transwestern.

EDEN INDUSTRIAL PARK

Kennedale, TX 76063



Building # 9	Building # 3	Building # 1 & 2	Building # 4, 5, 6, 7, 8, 10, 11, 12
6,000 SF Space	6,125 SF Space	8,750 SF Space	10,000 SF Space
(4) 14'x14' Grade-Level Doors	(4) 14'x14' Grade-Level Doors	(4) 14'x14' Grade-Level Doors	(8) 14'x14' Grade-Level Doors
Fenced Yard Space	Fenced Yard Space	Fenced Yard Space	Fenced Yard Space
± 300 SF of Spec Office	± 300 SF of Spec Office	± 300 SF of Spec Office	± 300 SF of Spec Office
16' Clear	16' Clear	16' Clear	16' Clear
County Zoning	County Zoning	County Zoning	County Zoning

For Information:

Lyndon Todd
817.259.3524
lyndon.todd@transwestern.com

Charlie McCollum
817.259.3513
charlie.mccollum@transwestern.com

The information provided herein was obtained from sources believed reliable; however, Transwestern makes no guarantees, warranties or representations as to the completeness of accuracy thereof. The presentation of this property is submitted subject to errors, omissions, change of price or conditions, prior to sale or lease, or withdrawal without notice. Copyright © 2025 Transwestern.

