

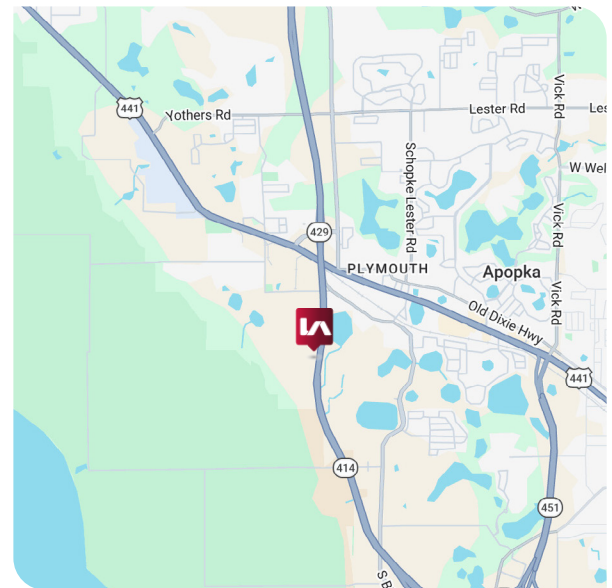
**FOR LEASE**  
**MID FLORIDA LOGISTICS PARK OUTSIDE STORAGE**  
**3180 SUPPLY CHAIN CIRCLE**  
**APOPKA, FL 32703**



**FUTURE LANDLORD IMPROVEMENTS**

**PROPERTY HIGHLIGHTS**

- Total Site Size: 16.79 Acres
- Divisible down to 5 -10 acres
- Ideal use: Outdoor storage, truck parking, equipment storage, etc.
- Location: Easy access to 429 (Central Florida Beltway), 414, and proximity to I-4 providing efficient north-south, and east-west connectivity across the greater Orlando MSA and throughout the state of Florida
- Zoning: (I-L) Light Industrial (City of Apopka)
- Improvements: Ownership to provide site improvements to suit



**LEASE RATE: CALL FOR INFO**

**Contact:**

Ryan Griffith  
Senior Vice President/Principal  
rgriffith@lee-associates.com  
D 321.281.8512  
C 908.208.4774

Christopher "CJ" Griffith, SIOR  
Vice President  
cgriffith@lee-associates.com  
D 321.281.8508  
C 908.380.3627

Charles W. Duvall  
Senior Associate  
cduvall@lee-associates.com  
D 321.281.8501  
C 321.243.0857

All information furnished regarding property for sale, rental or financing is from sources deemed reliable, but no warranty or representation is made to the accuracy thereof and same is submitted to errors, omissions, change of price, rental or other conditions prior to sale, lease or financing or withdrawal without notice. No liability of any kind is to be imposed on the broker herein.



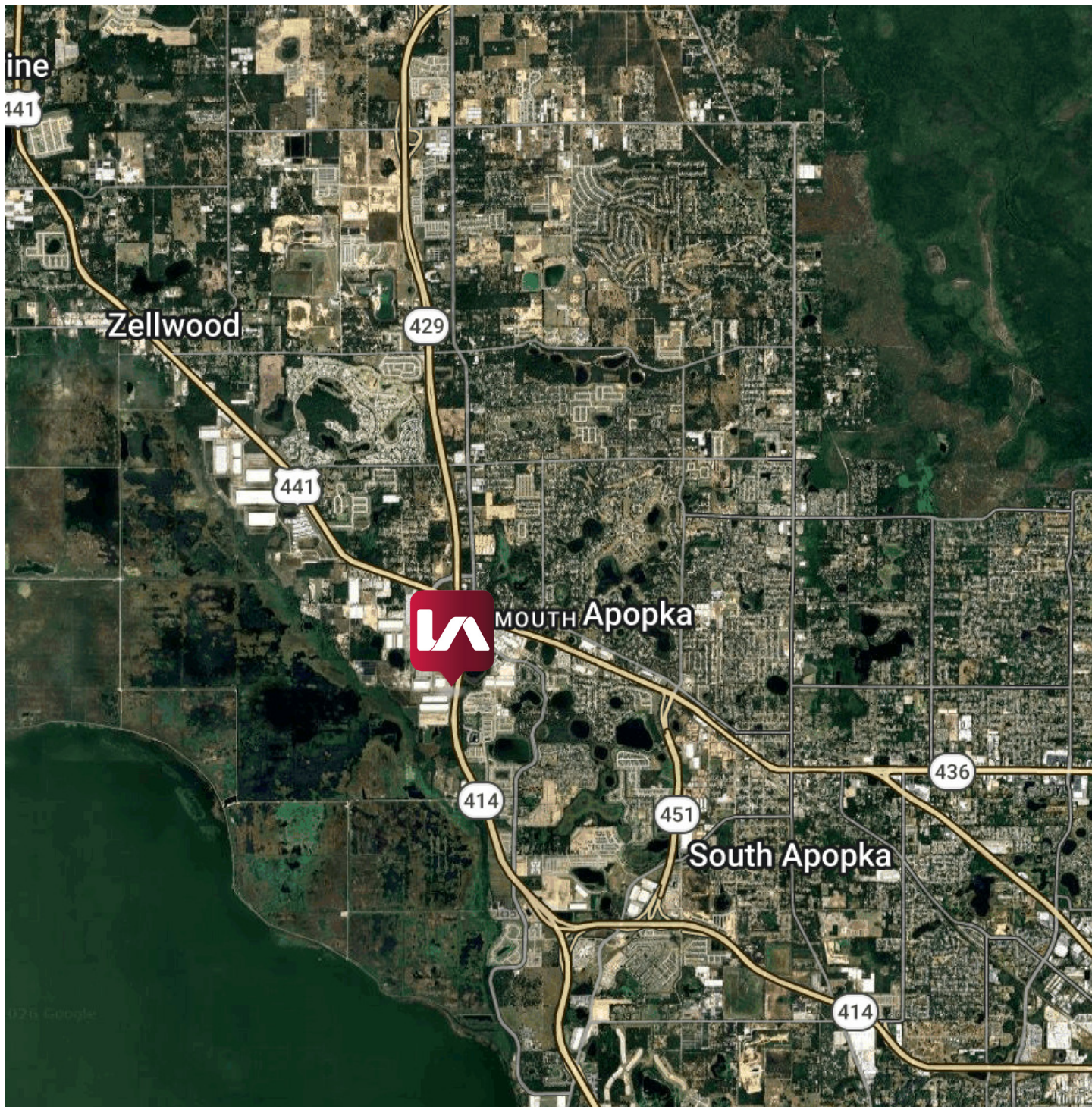
# 5-10 DIVISIBLE ACRES OF INDUSTRIAL OUTSIDE STORAGE

**3180 SUPPLY CHAIN CIRCLE**  
APOPKA, FL 32703





3180 SUPPLY CHAIN CIRCLE  
APOPKA, FL 32703



Contact:

Ryan Griffith  
Senior Vice President/Principal  
rgriffith@lee-associates.com  
D 321.281.8512  
C 908.208.4774

Christopher "CJ" Griffith, SIOR  
Vice President  
cgriffith@lee-associates.com  
D 321.281.8508  
C 908.380.3627

Charles W. Duvall  
Senior Associate  
cduvall@lee-associates.com  
D 321.281.8501  
C 321.243.0857