

FOR SALE | FOR LEASE

FORT SASKATCHEWAN COMMON

Veterans Way (Highway 21) & Highway 15 | Fort Saskatchewan, Alberta



NEW DEVELOPMENT

RETAIL • OFFICE • MEDICAL • MIXED-USE

CONTACT

Jewell Hansen, VICE PRESIDENT
HEALTHCARE, OFFICE/RETAIL SALES & LEASING
780 919 7672 | jewell@hcrgroup.ca



HUGHES
COMMERCIAL
REALTY GROUP

HCRGROUP.CA



Highlights

19.1 acre master-planned mixed-use development featuring commercial, retail, healthcare, restaurant, service, and residential uses.

Rare opportunity to own within the development, with commercial units available for purchase. Leasing opportunities are also available. Ideal for owner-occupiers seeking long-term ownership in a premier mixed-use project.

Prime exposure on Veterans Way (HWY 21), one of Fort Saskatchewan's busiest corridors, exceeding 43,170 + vehicles per day.

Multiple CRUs with flexible demising options, plus two 24,000 square foot 2-storey medical/professional buildings available for sale or lease.

Highly accessible location with direct connectivity to Edmonton, Sherwood Park, the Alberta Industrial Heartland, and key transportation corridors including Highway 21, Highway 15, and Anthony Henday Drive.

Located within a growing Fort Saskatchewan trade area with strong residential density, rapid population growth, and a robust employment base driven by the Alberta Industrial Heartland - creating consistent demand for retail, services, and healthcare.

The development concept contemplates a future residential component including a 96 unit luxury seniors complex and 70 townhomes, which would provide a built-in, walkable customer base.

Estimated possession: Q2 2027



Details

MUNICIPAL ADDRESS

9000 Veterans Way Fort Saskatchewan, Alberta

SPACE TYPE

Retail, office, healthcare, mixed use

DEVELOPMENT SIZE

Total commercial space: ± 126,922 SF

COMMERCIAL PARKING

± 389 surface stalls

COMMERCIAL SITE AREAS

Zone 2 | Grocery ± 2.85 acres

Zone 2 | Commercial ± 3.92 acres

Zone 3 | Commercial ± 4.16 acres

Zone 4 | Commercial ± 1.34 acres

SITE COVERAGE

22%

ZONING

DC(A)-07: Direct Control ⓘ

Financials

Please Contact the Listing Agents

Lease Rate & Sale Price

TBD

Additional Rent

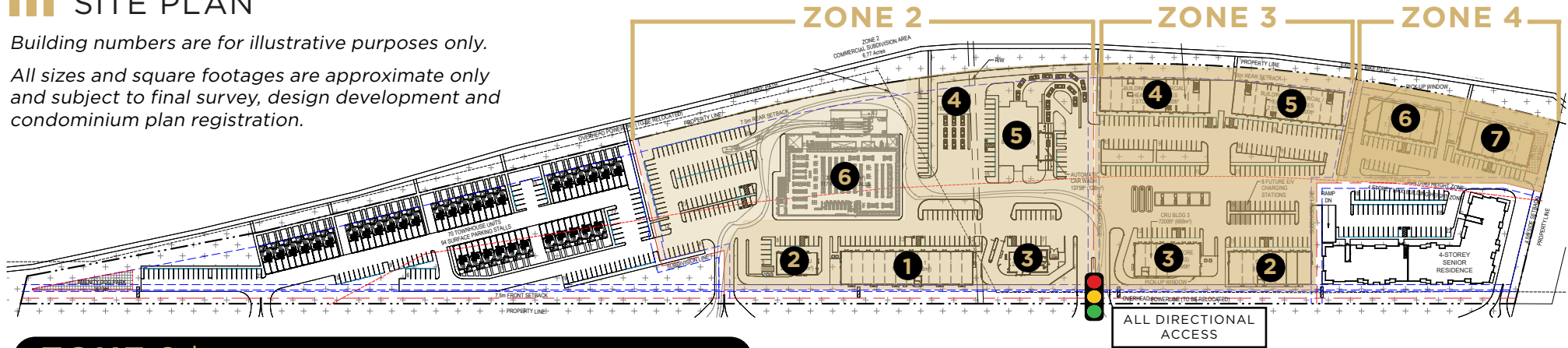
Utilities (power, water & gas) separately metered and payable by Tenant/Purchaser



||| SITE PLAN

Building numbers are for illustrative purposes only.

All sizes and square footages are approximate only and subject to final survey, design development and condominium plan registration.



ZONE 2 | FOR SALE OR LEASE

- Building 1** | 14,400 SF Single-storey CRU retail
- Building 2** | 2,934 SF QSR / Stand alone Drive-thru
- Building 3** | 2,778 SF QSR / Stand alone Drive-thru
- Building 4** | 1,938 SF Lube
- Building 5** | 9,466 SF Wand & Automatic Car Wash
- Building 6** | 30,000 SF Grocery/Big Box Retailer

ZONE 3 | FOR SALE OR LEASE

- Building 2** | 9,000 SF Single-storey CRU retail
- Building 3** | 7,200 SF Single-storey CRU retail
- Building 4** | 24,000 SF 2-storey Medical / Professional
- Building 5** | 24,000 SF 2-storey Medical / Professional

ZONE 4 | FOR SALE OR LEASE

- Building 6** | 7,800 SF Single-storey CRU retail
- Building 7** | 7,800 SF Single-storey CRU retail



Be part of a powerful lineup of national retailers at Fort Saskatchewan Common including:

Esso • Daycare • C-Store • Liquor Store

Medical & Health Services

Zone 3 | Buildings 4 & 5

Fort Saskatchewan Common features two purpose-built 24,000 square foot 2-storey medical/professional buildings offering flexible 12,000 square foot floorplates, elevator access, abundant parking, and prime visibility along a major arterial route.

Designed for modern healthcare operations, these buildings are ideal for medical clinics, dental, pharmacy, optometry, physiotherapy, chiropractic, specialists, diagnostics, imaging, and wellness providers.

With customizable layouts and immediate access to a rapidly growing residential population, this development represents a premier long-term opportunity for healthcare and professional users.



ZONE 2

LEASE OR SALE OPTIONS AVAILABLE - PLEASE CONSULT WITH THE LISTING AGENT

BUILDING 1

- 1 ± 1,200 SF
- 2 ± 1,200 SF
- 3 ± 1,200 SF
- 4 ± 1,200 SF
- 5 ± 1,200 SF
- 6 ± 1,200 SF
- 7 ± 1,097 SF
- 8 ± 1,097 SF
- 9 ± 1,200 SF
- 10 ± 1,200 SF
- 11 ± 1,200 SF
- 12 ± 1,200 SF

BUILDING 2

- 13 ± 2,934 SF Drive-Thru

BUILDING 3

- 14 ± 2,778 SF Drive-Thru

BUILDING 4

- 15 ± 1,938 SF

BUILDING 5

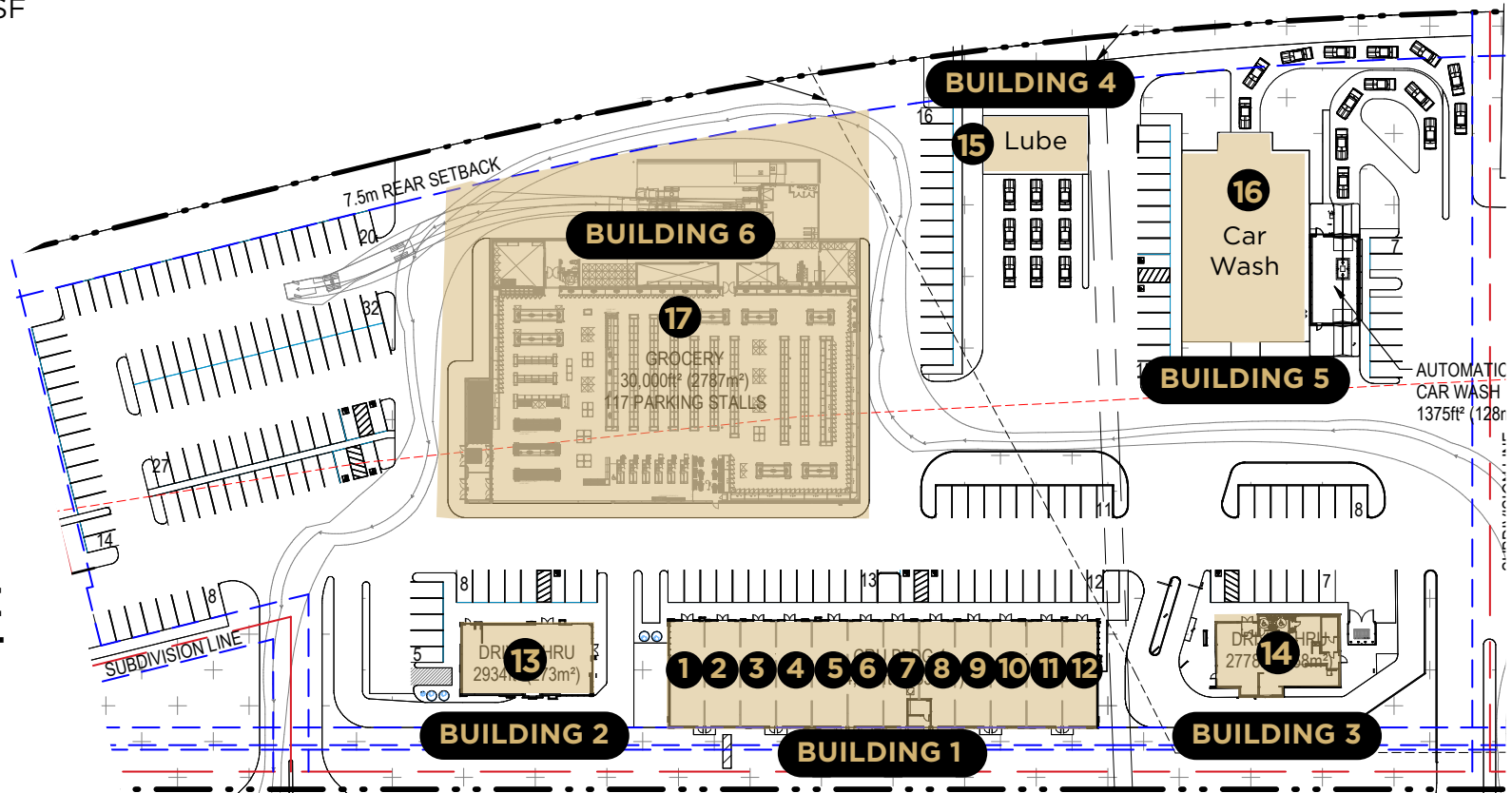
- 16 ± 8,091 SF Wand Wash & 1,375 SF Automatic Wash

BUILDING 6

- 17 ± 30,000 SF

Ideal for Grocery or Big Box Retailers

PYLON SIGNAGE AVAILABLE AT MARKET RATE



Available Pending Leased

All square footages are estimates only and subject to final architectural measurements.

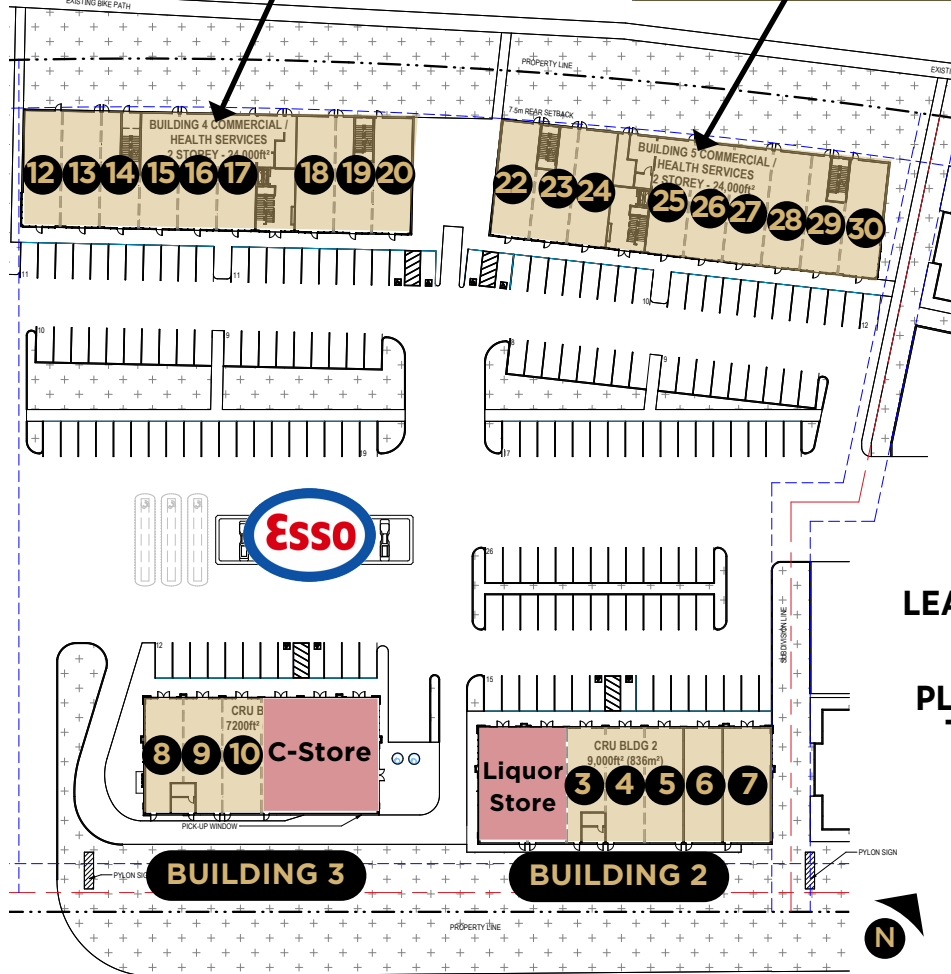
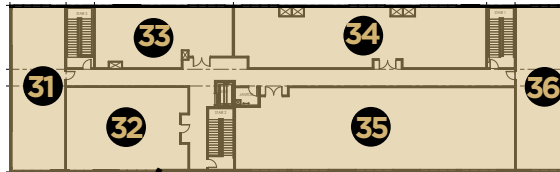


ZONE 3

Second Floor | Building 4



Second Floor | Building 5



**LEASE OR SALE OPTIONS
AVAILABLE -
PLEASE CONSULT WITH
THE LISTING AGENT**

BUILDING 2

- 3 ± 1,000 SF 6 ± 1,200 SF
- 4 ± 1,200 SF 7 ± 1,500 SF
- 5 ± 1,200 SF

BUILDING 3

- 8 ± 1,097 SF 10 ± 1,200 SF
- 9 ± 1,097 SF

BUILDING 4

- 12 ± 1,200 SF 17 ± 1,200 SF
- 13 ± 1,200 SF 18 ± 1,200 SF
- 14 ± 891 SF 19 ± 949 SF
- 15 ± 1,200 SF 20 ± 1,200 SF
- 16 ± 1,200 SF 21 ± 1,853 SF

BUILDING 5

- 22 ± 1,200 SF 30 ± 1,255 SF
- 23 ± 949 SF 31 ± 1,196 SF
- 24 ± 1,200 SF 32 ± 1,196 SF
- 25 ± 1,200 SF 33 ± 1,050 SF
- 26 ± 1,200 SF 34 ± 1,961 SF
- 27 ± 1,200 SF 35 ± 2,977 SF
- 28 ± 1,200 SF 36 ± 1,196 SF
- 29 ± 949 SF

Available Pending Leased

All square footages are estimates only and subject to final architectural measurements.



ZONE 4

LEASE OR SALE OPTIONS AVAILABLE - PLEASE CONSULT WITH THE LISTING AGENT

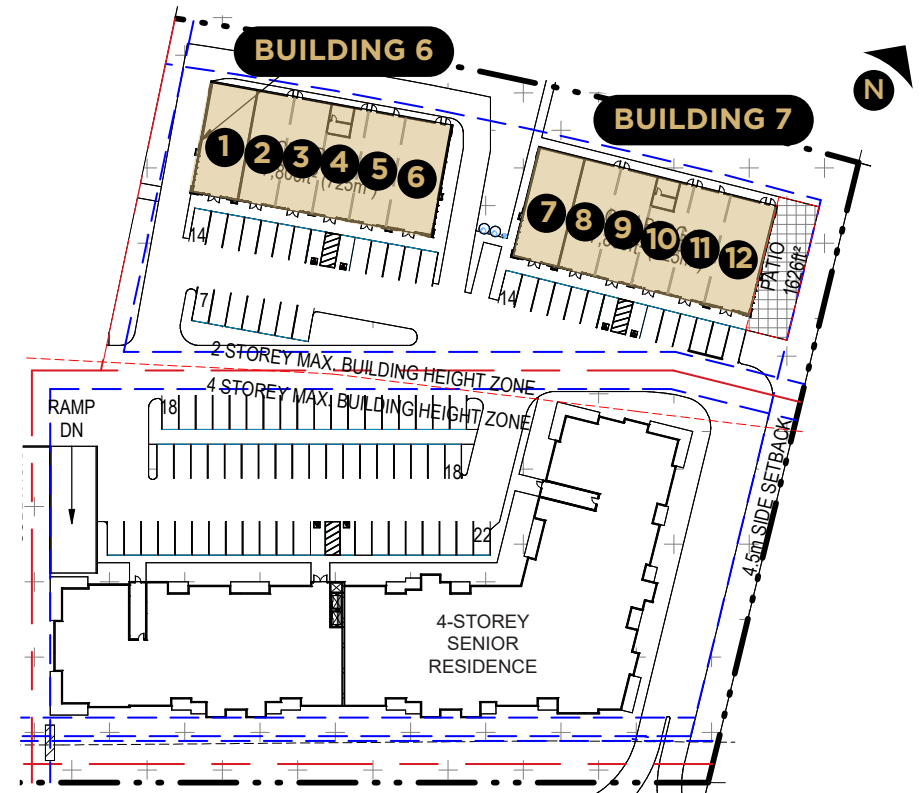
BUILDING 6

- 1 ± 1,300 SF 4 ± 1,300 SF
- 2 ± 1,300 SF 5 ± 1,300 SF
- 3 ± 1,300 SF 6 ± 1,300 SF

BUILDING 7

- 7 ± 1,300 SF 10 ± 1,300 SF
- 8 ± 1,300 SF 11 ± 1,300 SF
- 9 ± 1,300 SF 12 ± 1,300 SF

Zone 4 will be best suited for a destination restaurant, concept cuisine or boutique coffee shop, alongside wellness uses and is ideally positioned to serve the nearby senior population, with a four-storey, high-end seniors' residence just steps away.



Available Pending Leased

All square footages are estimates only and subject to final architectural measurements.



ZONE 2



ZONE 2 DRIVE-THRU



ZONE 3



ZONE 3



DRIVE TIMES

From Site

Highway 15

1.0 km | 2 min

Highway 37

5.0 km | 5 min

Anthony Henday

16 km | 15 min

Highway 16

17.5 km | 18 min

Downtown Edmonton

35 km | 38 min

International Airport

66 km | 48 min



FORT SASKATCHEWAN COMMON

DOW CENTENNIAL CENTRE

Population **33,712**

5-Year Growth **3.2%**

Median Age **36.2**

Income **\$132,680**

10KM Radius. 2024 Demographics Courtesy of CoStar

CONTACT

Jewell Hansen, VICE PRESIDENT
HEALTHCARE, OFFICE/RETAIL SALES & LEASING
780 919 7672 jewell@hcrgroup.ca



HUGHES
COMMERCIAL
REALTY GROUP

This brochure has been constructed by Hughes Commercial Realty Group (HCR Group) with information provided by the Vendor and is considered to be reliable. The HCR Group does not warrant, represent or assume any responsibility for its accuracy or completeness. It is recommended that all information contained in this brochure be confirmed and verified by qualified professionals prior to being relied upon by a potential purchaser - the information is believed to be accurate when prepared but is subject to errors, omissions or changes without notice. This publication, the Hughes Commercial Realty Group name and logos are the copyrighted property of Hughes Commercial Realty Group and/or its licensor(s). You must not use such marks without the prior written permission of Hughes Commercial Realty Group. All other names, logos, product and service names, designs and slogans contained in this email and any attachments are the trademarks of their respective owners.

VIEW PROPERTY LISTINGS & MARKET REPORTS AT WWW.HCRGROUP.CA