

BENICIA INDUSTRIAL



CBRE

535 GETTY RD, SUITE A-D
BENICIA, CA

Big Enough To Serve You. Small Enough To Know You...



±28,224 SF
AVAILABLE NOW

FLOORPLAN

± 28,224 TOTAL SQUARE FOOTAGE

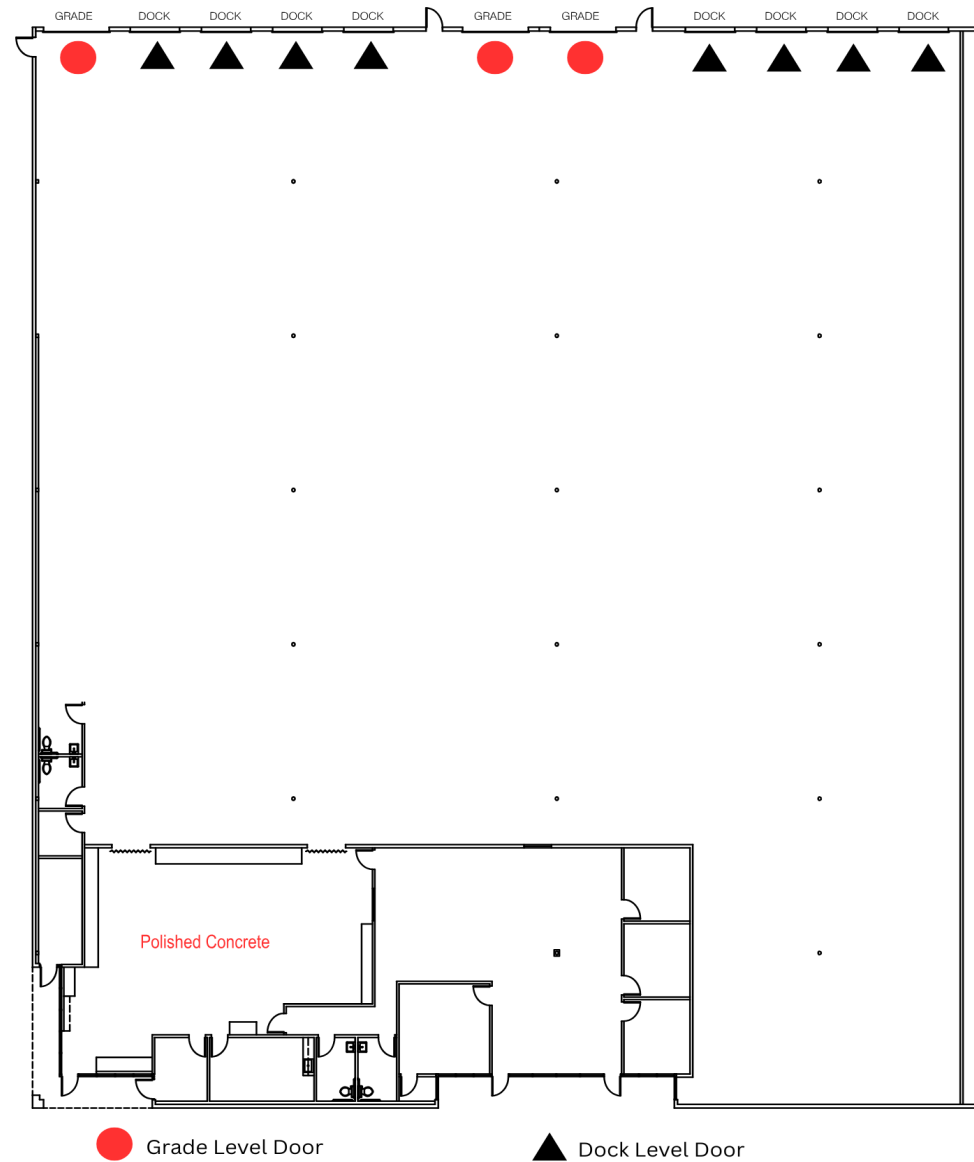
DIMENSIONS: ±168'W X ±168'D

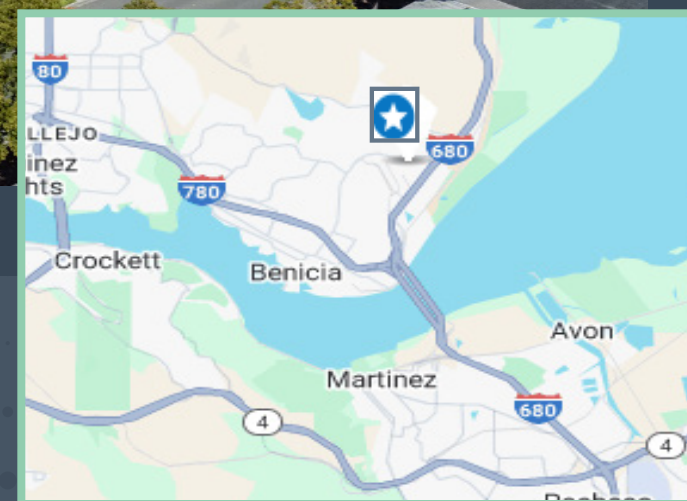
OFFICE FEATURES:

- ±4,200 SF OFFICE
- RECEPTION
- BREAKROOM
- FOUR (4) RESTROOMS TOTAL (TWO SERVING OFFICE, TWO SERVING WAREHOUSE)
- MULTIPLE PRIVATE OFFICES
- BULLPEN AREA

WAREHOUSE FEATURES

- ± 24,024 SF OFFICE
- LOADING: EIGHT(8) DOCK-HIGH DOORS (9'X10')
- THREE (3) GRADE-LEVEL DOORS (12'X14')
- CLEAR HEIGHT: ±24' MIN
- COLUMN SPACING: ±24' X ±48'
- SPRINKLERED: .495/2,000 GPM
- POWER: ±400 AMPS@277/480 (TO BE VERIFIED)
- CONCRETE TILT-UP CONSTRUCTION
- INSULATED WAREHOUSE
- LED LIGHTING THROUGHOUT





Tony Binswanger
Executive Vice President
+1 925 296 7728
tony.binswanger@cbre.com
Lic. 01861701

Bo Harkins
First Vice President
+1 925 296 7727
bo.harkins@cbre.com
Lic. 01943785

Brooks Pedder
Vice Chairman
+1 925 296 7729
brooks.pedder@cbre.com
Lic. 00902154



© 2025 CBRE, Inc. All rights reserved. This information has been obtained from sources believed reliable but has not been verified for accuracy or completeness. CBRE, Inc. makes no guarantee, representation or warranty and accepts no responsibility or liability as to the accuracy, completeness, or reliability of the information contained herein. You should conduct a careful, independent investigation of the property and verify all information. Any reliance on this information is solely at your own risk. CBRE and the CBRE logo are service marks of CBRE, Inc. All other marks displayed on this document are the property of their respective owners, and the use of such marks does not imply any affiliation with or endorsement of CBRE. Photos herein are the property of their respective owners. Use of these images without the express written consent of the owner is prohibited.