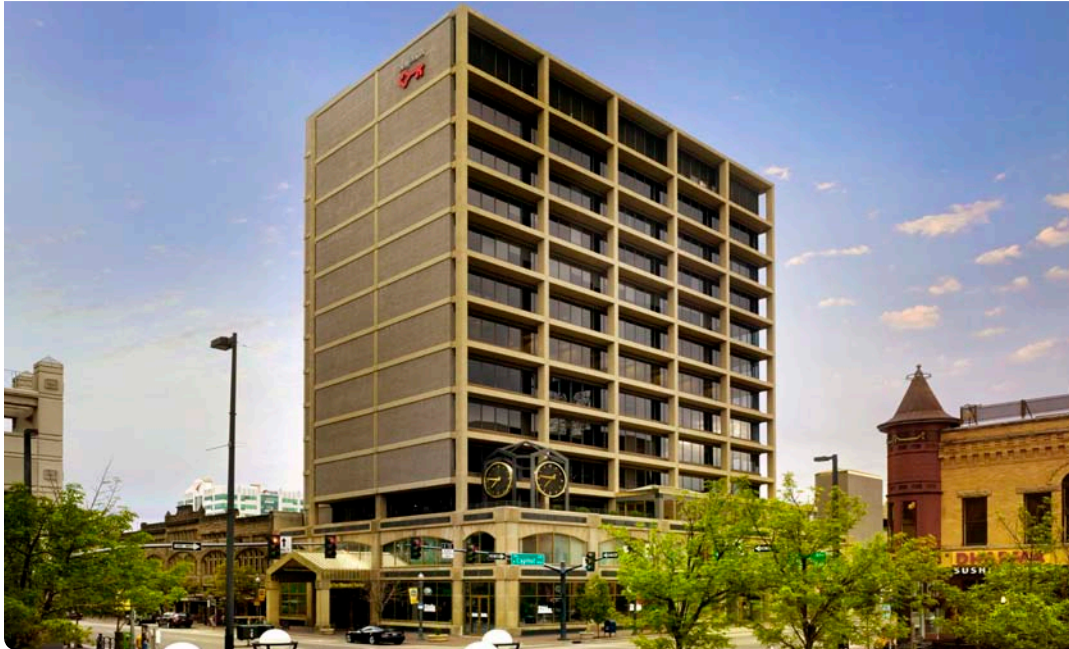


# OFFICE SPACE FOR SUBLEASE KEY FINANCIAL CENTER

702 W IDAHO STREET, SUITE 600 • BOISE, IDAHO 83702



## PROPERTY INFORMATION:

<b>Submarket:</b>	Downtown	<b>Lease Type:</b>	Full Service
<b>Bldg Type:</b>	Office	<b>Lease Term:</b>	Negotiable
<b>Quality:</b>	Class A	<b>TI Allowance:</b>	Negotiable
<b>Bldg Size:</b>	100,468 SF	<b>Available:</b>	30 Days Notice
<b># of Floors:</b>	12		
<b>Parking:</b>	Attached Garage		

## AVAILABLE SPACE:

SPACE:	SIZE:	RATE:	MONTHLY:
Suite 600	±3,090 SF	\$22.00/SF	\$5,665.00

Contact Agents for showings.

Current term expires June 30, 2019. Longer term available.

## CONTACT:

**Peter Oliver, SIOR, CCIM**

Ph: 208.947.0816

peter@tokcommercial.com

**Mike Greene, SIOR, CCIM**

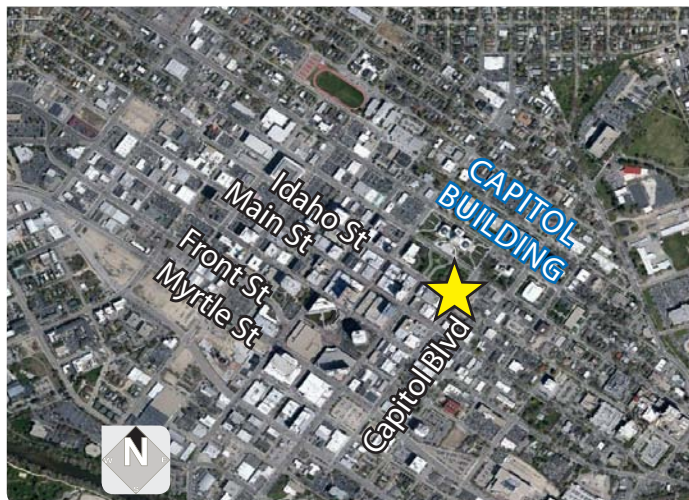
Ph: 208.947.0835

mikeg@tokcommercial.com

**Nick Schuitemaker**

Ph: 208.947.0802

nick@tokcommercial.com



## LISTING COMMENTS:

Class A office building.

Attached parking garage.

Excellent downtown location.

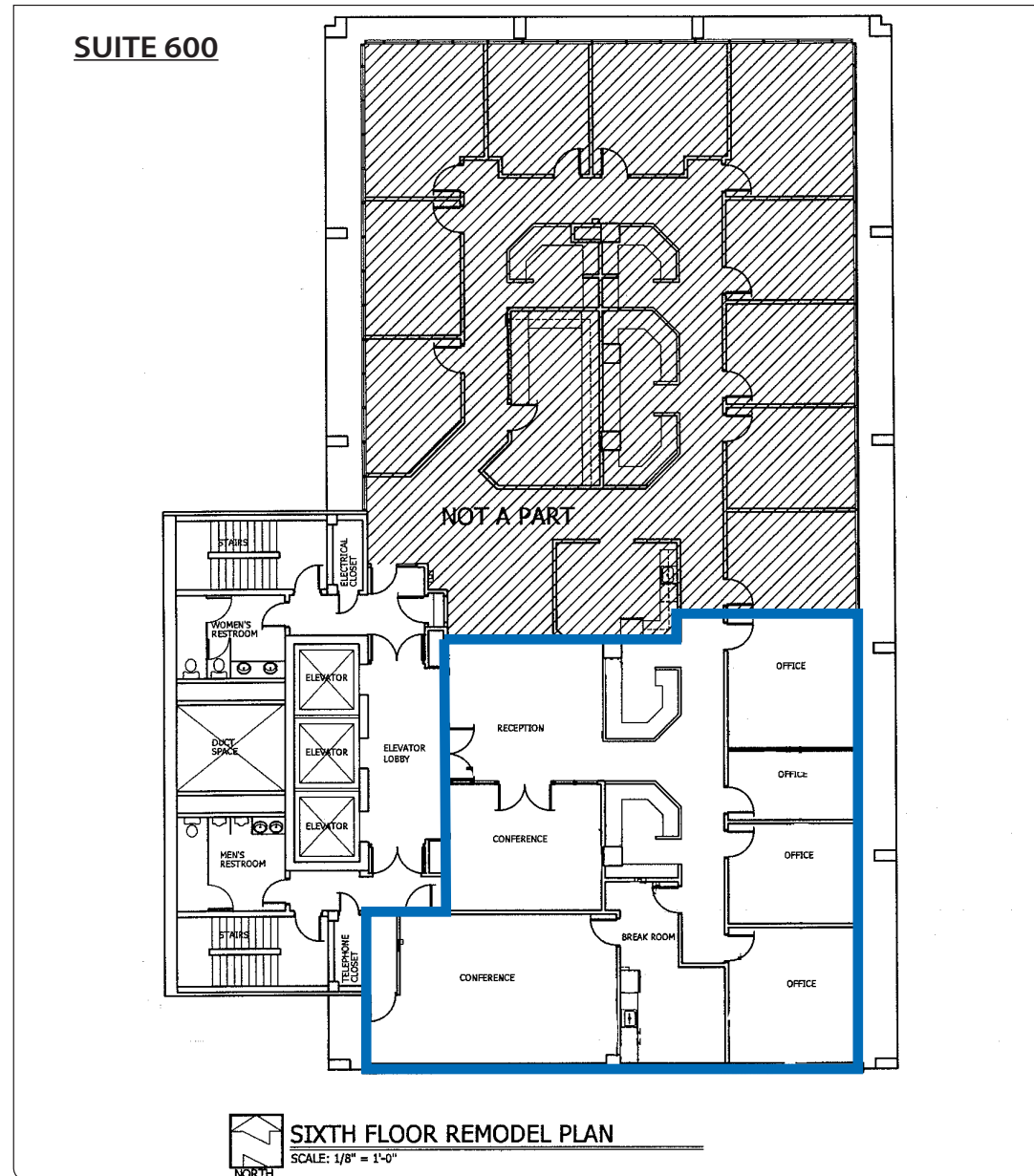
Close to restaurants, hotels, shopping and services.

Key Financial amenities include workout room with showers, break room, mail room, bike storage, and an outdoor patio area.

Sublease includes 6 parking permits available for lease in adjacent parking garage. Additional permits available.

# OFFICE SPACE FOR SUBLEASE KEY FINANCIAL CENTER

702 W IDAHO STREET, SUITE 600 • BOISE, IDAHO 83702



This information was obtained from sources believed reliable but cannot be guaranteed. Any opinions or estimates are used for example only.