

527,023 SF INDUSTRIAL FOR LEASE OR SALE

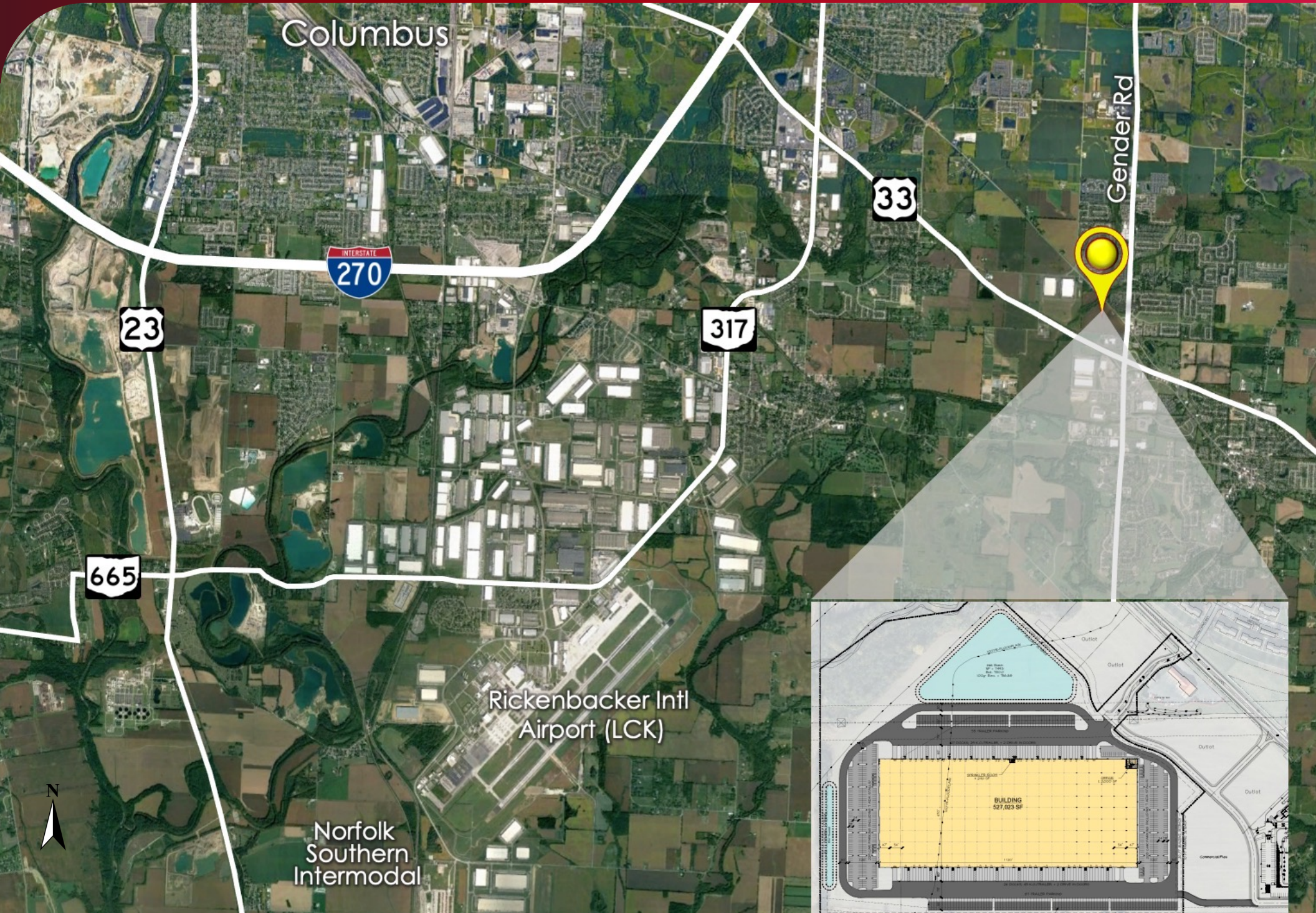


WINCHESTER  
527



6085 WINCHESTER PIKE, COLUMBUS, OHIO 43110





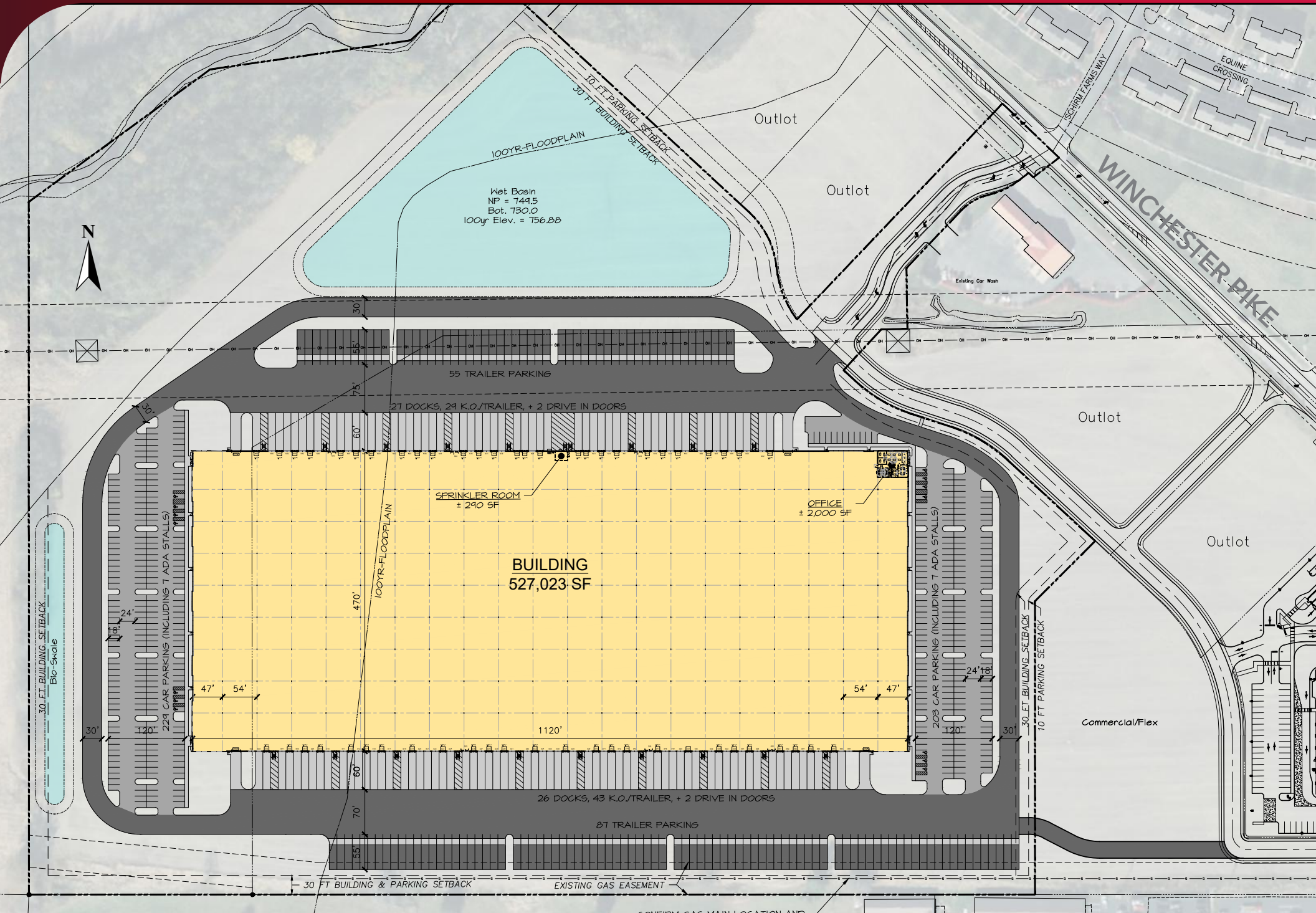
# 6085 WINCHESTER PIKE, COLUMBUS, OHIO

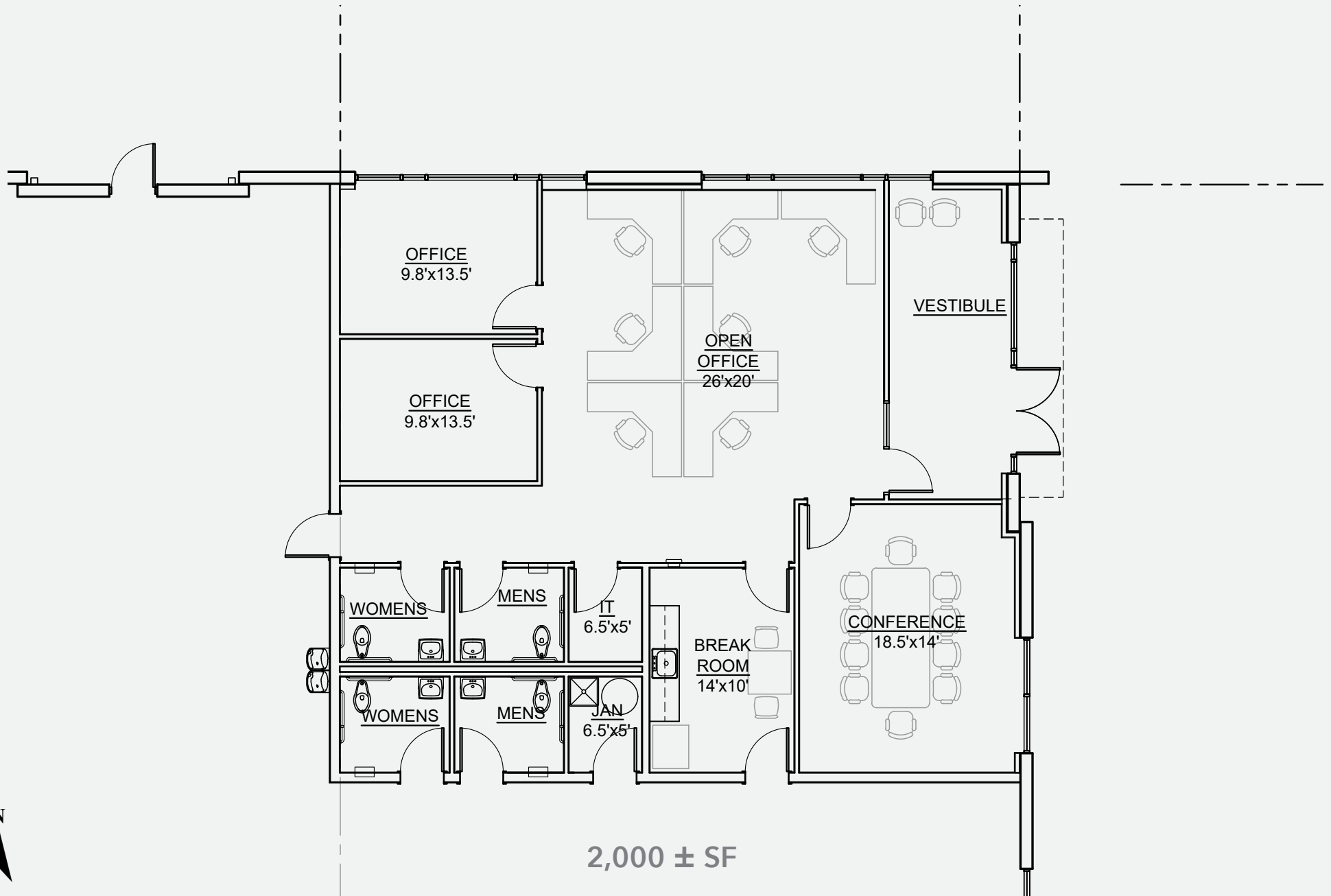


-  0.5 miles  
2 minutes
-  5.1 miles  
6 minutes
-  8.3 miles  
13 minutes
-  11.9 miles  
9 minutes
-  14.2 miles  
15 minutes
-  33.1 miles  
32 minutes

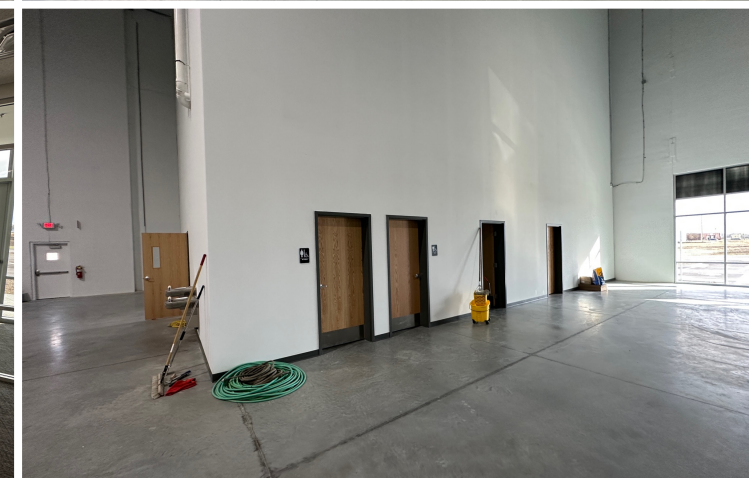
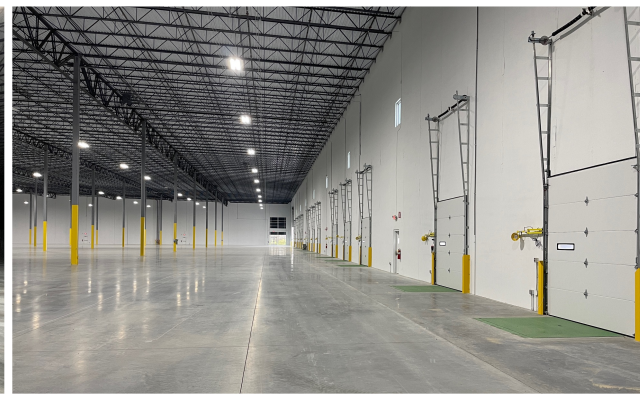
-  527,023 SF
-  40' Clear Height
-  53 Dock Doors
-  Tax Abatement
-  432 Auto Spaces
-  142 Trailer Spaces
-  54' X 50' Columns
-  42.3 Acres

# SITE PLAN





# 527,023 SF INDUSTRIAL FOR LEASE OR SALE



# PROJECT SPECIFICATIONS

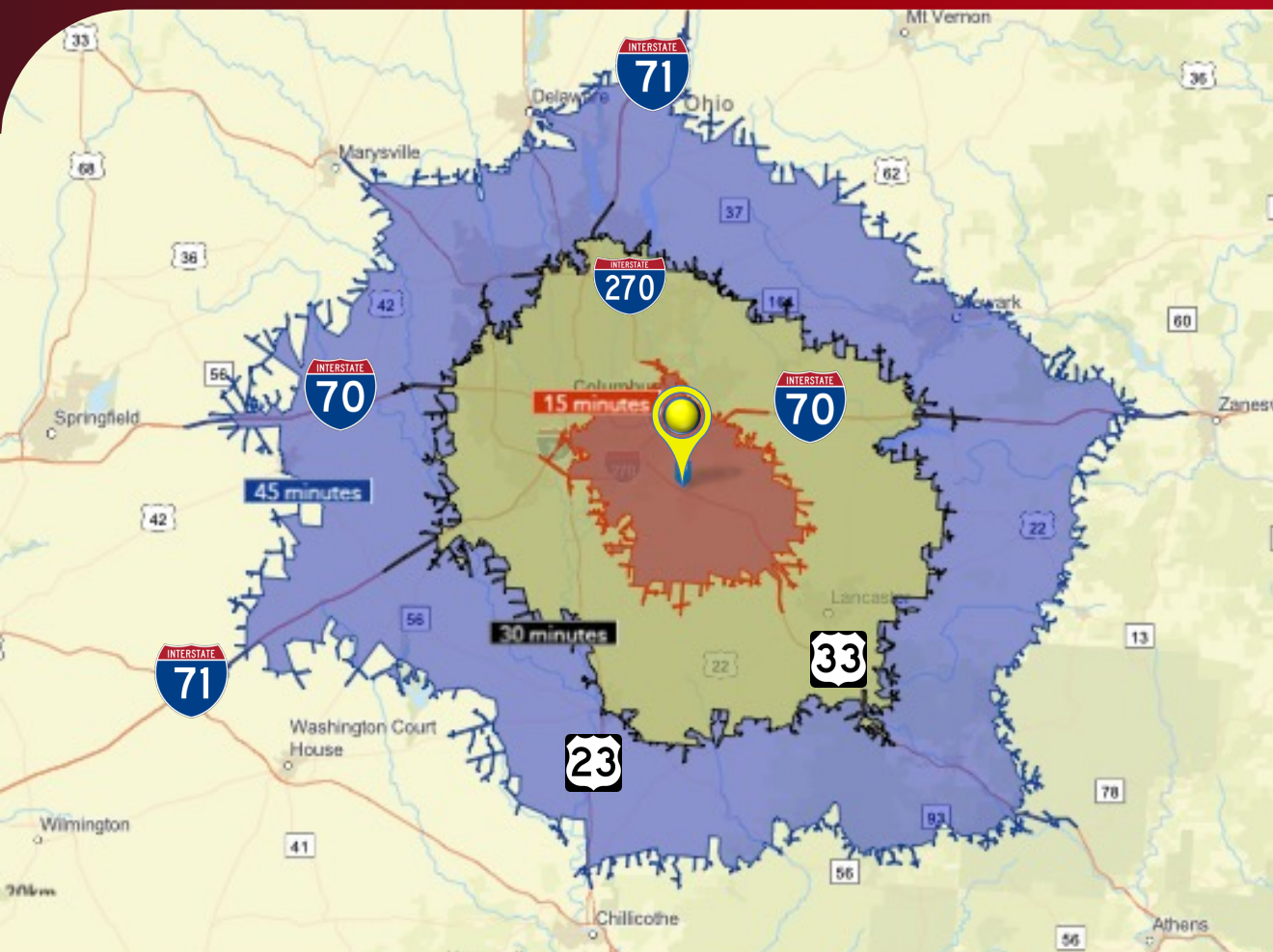
<b>Municipality</b>	City of Columbus, OH
<b>Total Building</b>	527,023 SF
<b>Building Dimensions</b>	470' deep X 1,120'
<b>Office Improvements</b>	2,000 SF in place (4 storefront entry systems)
<b>Site Size</b>	42.3 acres
<b>Building Completion</b>	December 2023
<b>Zoning</b>	PIP - Planned Industrial Park
<b>Exterior Walls</b>	Load Bearing Insulated Precast Concrete Panel Interior painted white, aluminum framed windows
<b>Column Spacing</b>	54' wide X 50' deep, end bays 47' wide X 50' deep
<b>Dock Wall Column Space</b>	60' deep
<b>Bay Size</b>	25,380 SF (54' X 470')
<b>Roof</b>	TPO 60 mil single ply mechanically fastened
<b>(20 year warranty)</b>	Metal deck (22 gauge) - factory primed white
<b>Roof Drainage</b>	Interior roof drains / underground pipe to storm
<b>Floor</b>	8" concrete SOG (FF 50, FL 35 spec), 4000 PSI Saw cut control joints, Ashford formula hardener
<b>Ceiling Height</b>	40' at the first interior column
<b>Warehouse Lighting</b>	LED with motion sensors (30 foot candles @ 3'AFF)
<b>Heating</b>	Direct gas MUA units (55° F inside @ 0° F outside)
<b>Air Conditioning</b>	Office area (initial 2,000 SF)
<b>Insulation</b>	Exterior Walls = R-12, Roof = R-20
<b>Fire Suppression</b>	ESFR
<b>Roof Drainage</b>	Sloped to interior downspouts
<b>Loading Configuration</b>	Cross Dock flow through design
<b>Truck Courts</b>	185' depth / 60' concrete pad

<b>Dock Doors</b>	53 (27 north / 26 south) / 9' W X 10' H / 72 KOs
<b>Dock Equipment</b>	40,000 lb 7' X 8' airbag levelers, vision windows, seals, bumpers, bollard track guards, electric outlet
<b>Additional Dock Doors</b>	Potential to add 72 dock doors
<b>Drive In Doors</b>	(4) 14'w X 16'h / vision window / 60' concrete ramp
<b>Auto Parking Building Total</b>	432 spaces (229 west side + 203 east side)
<b>Trailer Parking</b>	142 spaces away from building
<b>Electric Service</b>	277/480V 3 Phase, Two 2000 AMP panels
<b>Water / Sewer</b>	City of Columbus
<b>Natural Gas</b>	Columbia Gas
<b>Plumbing</b>	Domestic Water and Fire Loop, 6" Sanitary Sewer
<b>Telecom</b>	Various providers, D Mark location TBD
<b>Parcel ID Franklin County</b>	010 - 308800 - 00
<b>Incentives</b>	RE Tax Abatement - 75% improvements / 10 years
<b>Signage</b>	Building / Monument / Suite
<b>Intermodal Access</b>	Norfolk Southern Intermodal 11.0 Miles
<b>Airport Access</b>	Rickenbacker (LCK) 8.8 Miles John Glenn Intl (CMH) 16.3 Miles
<b>Logistical Access</b>	Interstate 270 Via US 33 / Gender Rd 0.5 Miles to US 33 5.1 Miles to I-270 Columbus Outerbelt 8.3 Miles to I-70 East Side via I-270 11.4 Miles to I-71 Downtown 14.2 Miles to I-71 South Side via I-270
<b>Corporate Neighbors</b>	DHL, Pitney Bowes, Chadwell Supply, Covetrus, Walgreens, Kenco Logistics

# SOUTHEAST SUBMARKET







# WINCHESTER 527

## ACCESS TO LABOR POOL

# 63,000+

## TRANSPORTATION & PRODUCTION RELATED WORKERS WITHIN 30 MINUTES



Drive Time

**15 Minutes**

**30 Minutes**

**45 Minutes**



Population

**297,785**

**1,384,635**

**1,934,270**



Employed

**107,148**

**801,041**

**1,013,898**



Transportation &  
Warehousing Workers

**4,596**

**22,198**

**26,523**

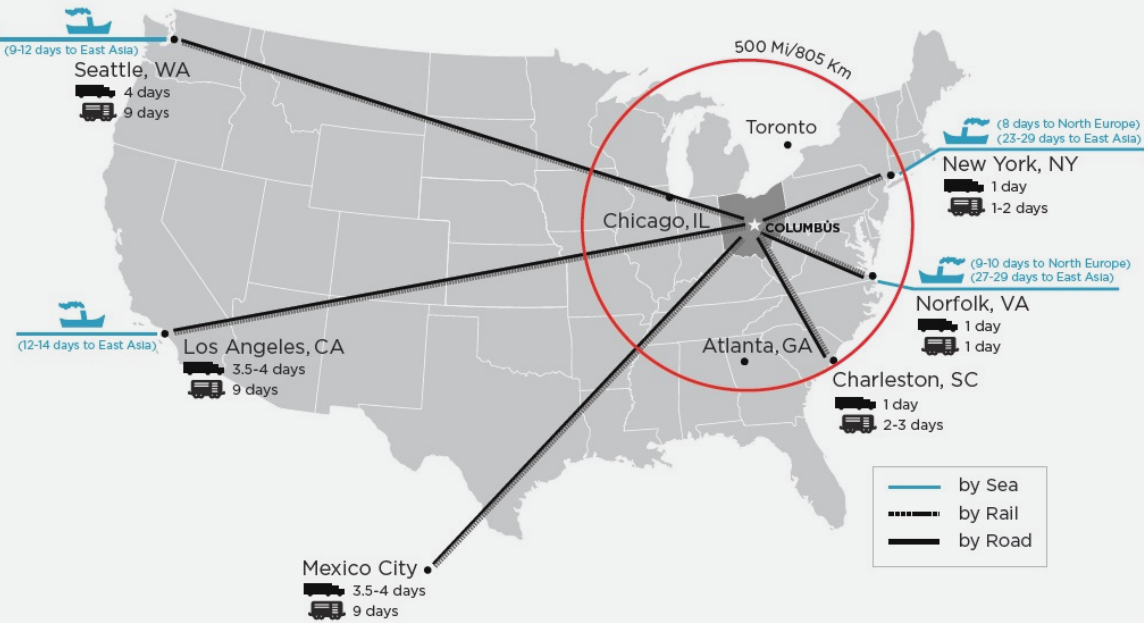


Production  
Workers

**8,912**

**41,033**

**58,808**



## Population



**2,599,353**

50 Mile Radius



**33,729,958**

250 Mile Radius



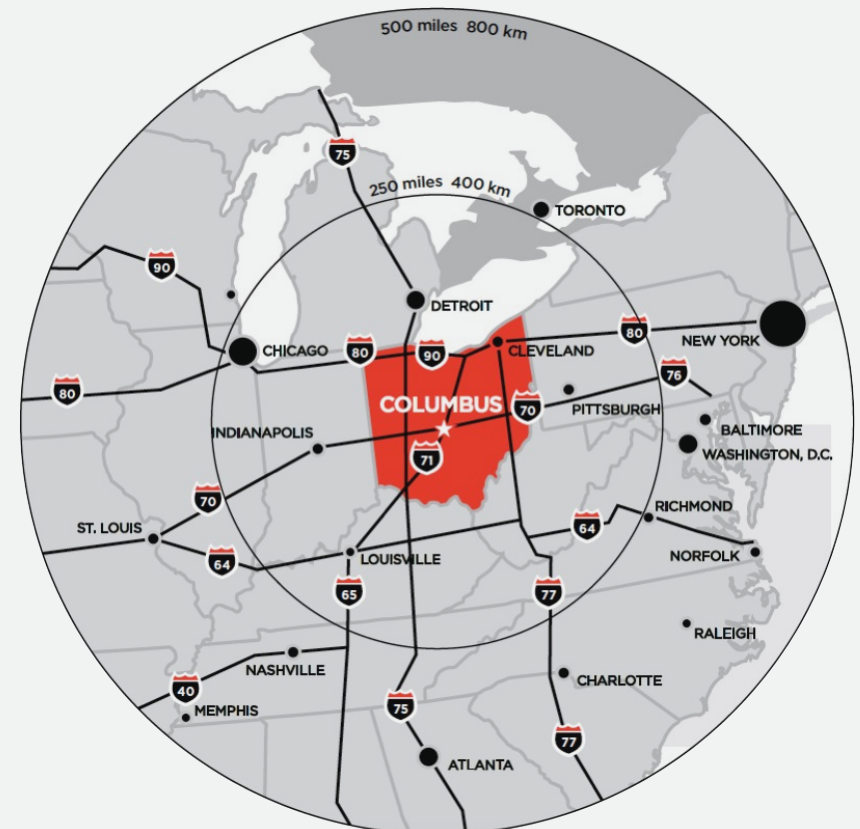
**138,988,255**

500 Mile Radius

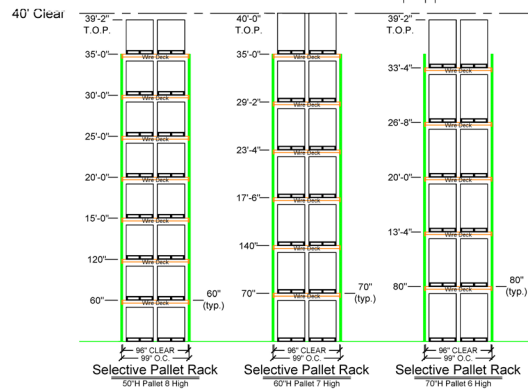
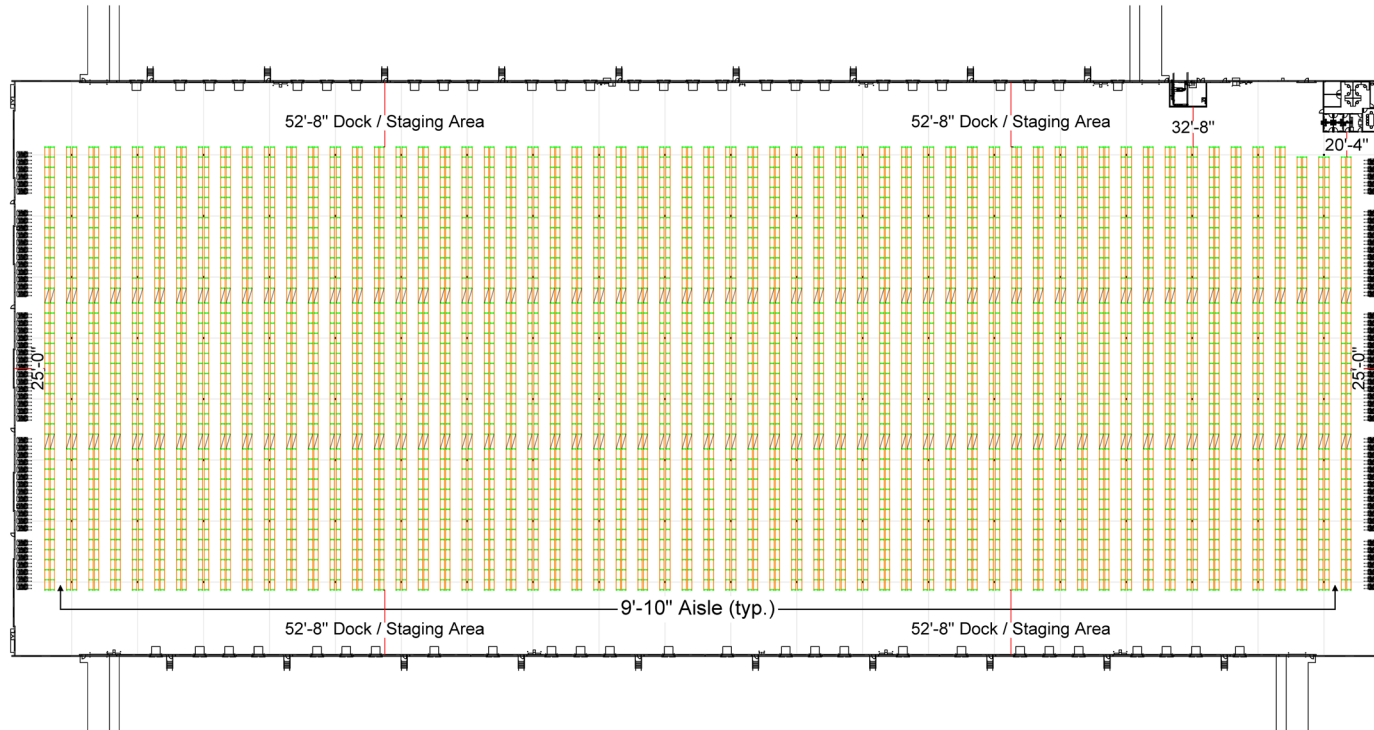


## 1 Day Truck Drive:

- 48 % US Population
- 33 % Canadian Population
- 44 % US Manufacturing
- 48 % US Headquarters



# PALLET OPTIMIZATION ANALYSIS



## 40' CLEAR HEIGHT

Number of Bays	Pallet Height	Pallet Positions
5,154	50"	50,580
	60"	40,752
	70"	30,204

## CATALINA MATERIAL HANDLING

RACKING AND STORAGE SOLUTIONS

7351 Garden Grove Boulevard, Unit B \* Garden Grove, CA 92841  
 Tel: (562) 997-1911 \* Email: jmcghee@catalinamh.com

Disclaimer: The contained racking layout and elevation drawings illustrate general conceptual possibilities for marketing purposes only. Please contact Catalina Material Handling for specific design considerations of company products, forklift equipment and other design criteria.  
 © 2023 All rights reserved. No part of this drawing shall be reproduced or modified in any form or by any means (graphic, electronic or mechanical), including photocopying, without written permission from an authorized representative from Catalina Material Handling.

# 527,023 SF INDUSTRIAL FOR LEASE OR SALE



WINCHESTER  
527

Todd Spencer, SIOR, CCIM  
todd.spencer@lee-associates.com  
C 614.327.0258

Mike Spencer, SIOR  
mike.spencer@lee-associates.com  
C 614.353.3852

Alex Kuniega  
alex.kuniega@lee-associates.com  
C 440.318.4078



All information provided regarding property for sale, lease, or financing is from sources deemed reliable, but no warranty or representation is made to the accuracy thereof and same is submitted subject to errors, omissions, change of price or other conditions prior to sale, lease or financing or withdrawal without notice. No liability of any kind is to be imposed on the broker herein. © 2023 Lee & Associates.