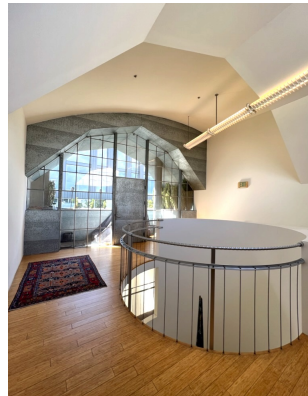


Paramount Laundry

@ CONJUNCTIVE POINTS
CULVER CITY + LA

3960 INCE BLVD



FOR LEASING INFORMATION, CONTACT:

Micheal Geller
Managing Director
micheal.geller@jll.com
CA License 00800010
(310) 486-1976

Gabriel Brown
Executive Vice President
gabe.brown@jll.com
CA License 01441920
(310) 435-4344

Josh Bernstein
Managing Director
josh.bernstein@cushwake.com
CA License 01828093
(310) 795-5947

Alexa Delahooke
Senior Associate
alexa.delahooke@cushwake.com
CA License 02091695
(626) 340-5391



Jones Lang LaSalle Brokerage, Inc., Real estate license #01856260.
Cushman & Wakefield. All rights reserved



Paramount Laundry

3960 INCE BLVD

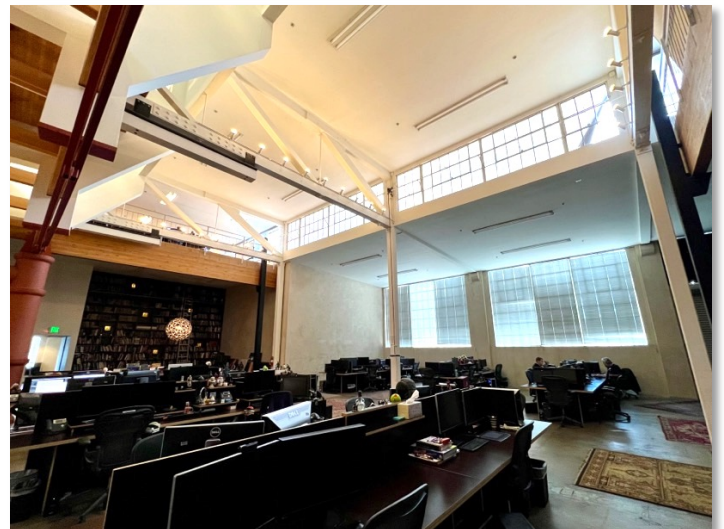
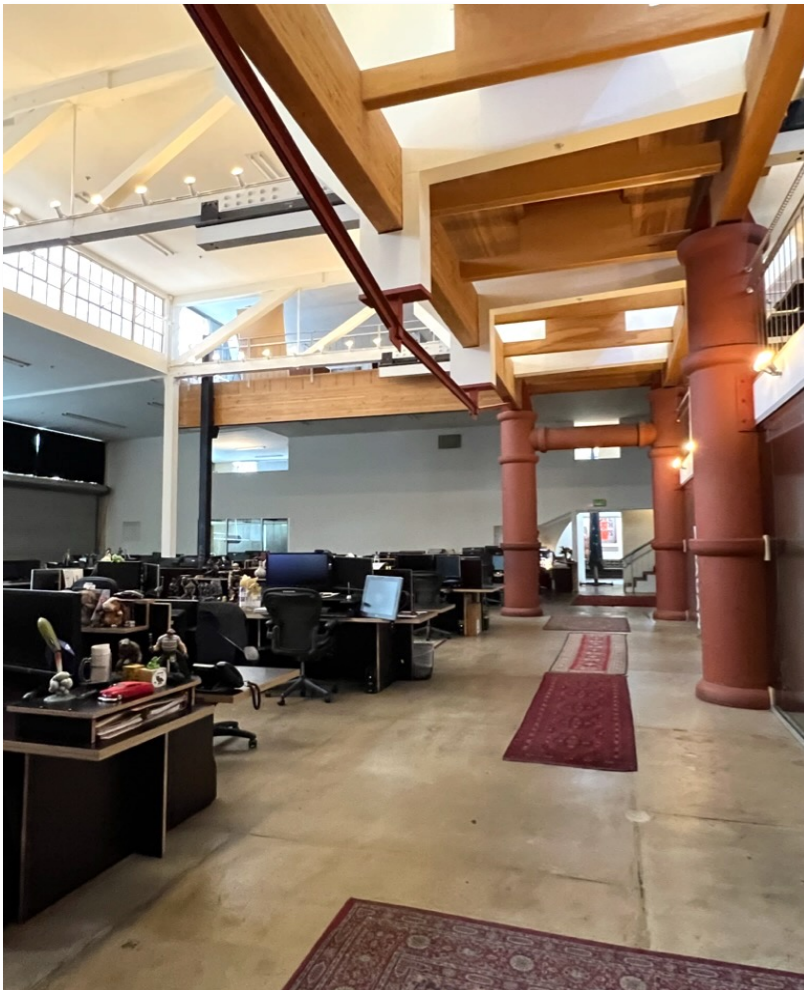
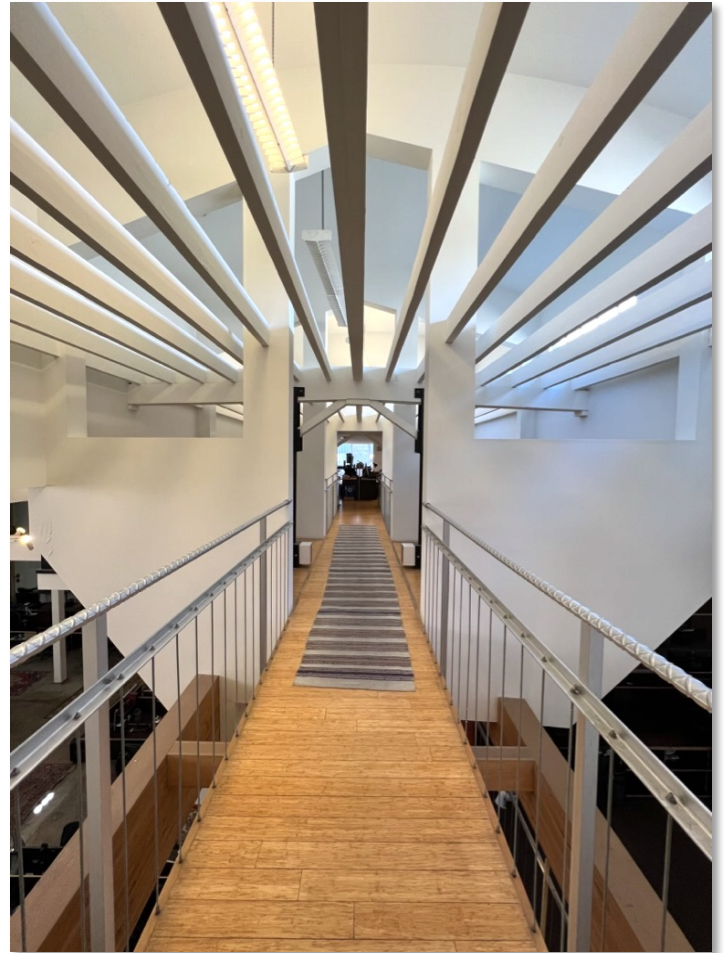
@ CONJUNCTIVE POINTS
CULVER CITY + LA

Exceptional standalone creative office building adjacent to downtown Culver City. Exciting and prominent architectural property situated across from Amazon Studios and Sony Pictures Animation. Features include high ceilings, concrete floors, substantial open workspace with connective mezzanine areas, outdoor patio area and dedicated onsite parking lot. Short walking distance to multiple restaurants and retail amenities. Located in the renowned Conjective Points creative office community, developed by Samitaur Constructs (Frederick & Laurie Samitaur Smith) and designed by Eric Owen Moss Architects.

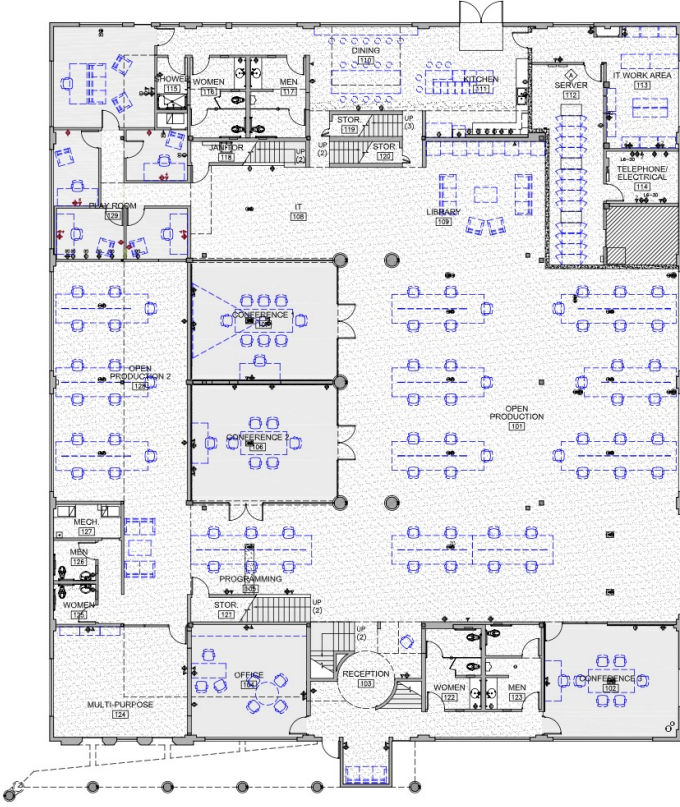
AVAILABLE SPACE: 25,336 RSF

RENTAL RATE: NEGOTIABLE

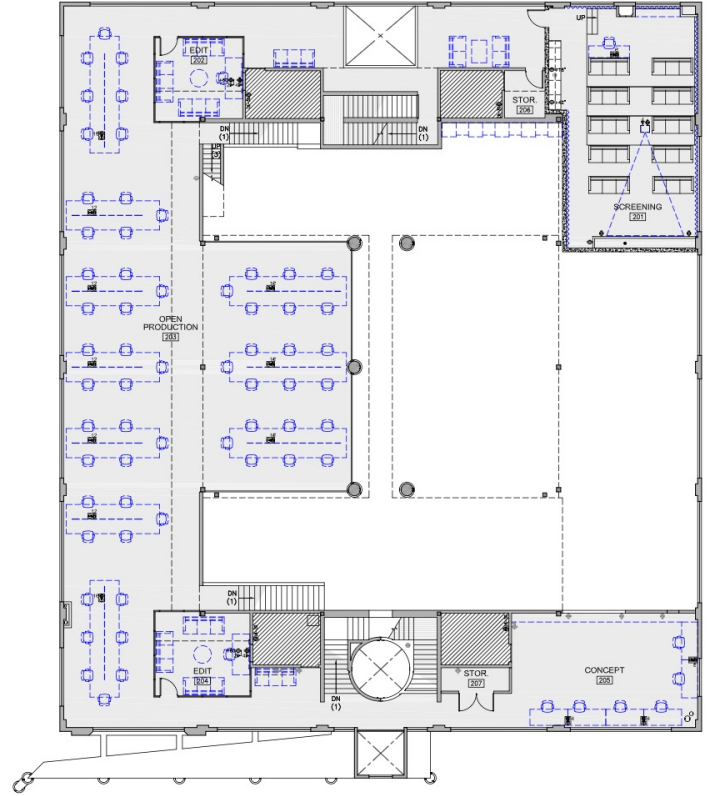
PARKING: 2/1,000 onsite
\$175 per space unreserved



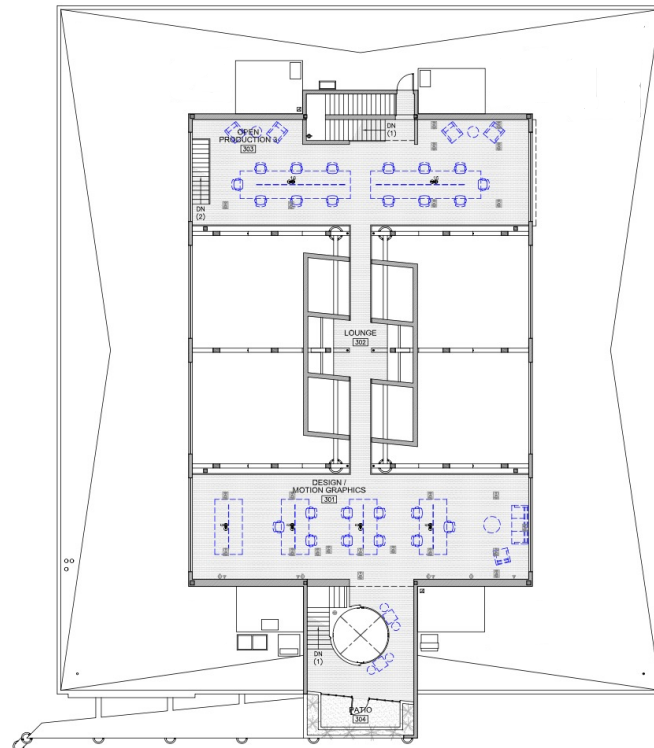
GROUND FLOOR



SECOND LEVEL

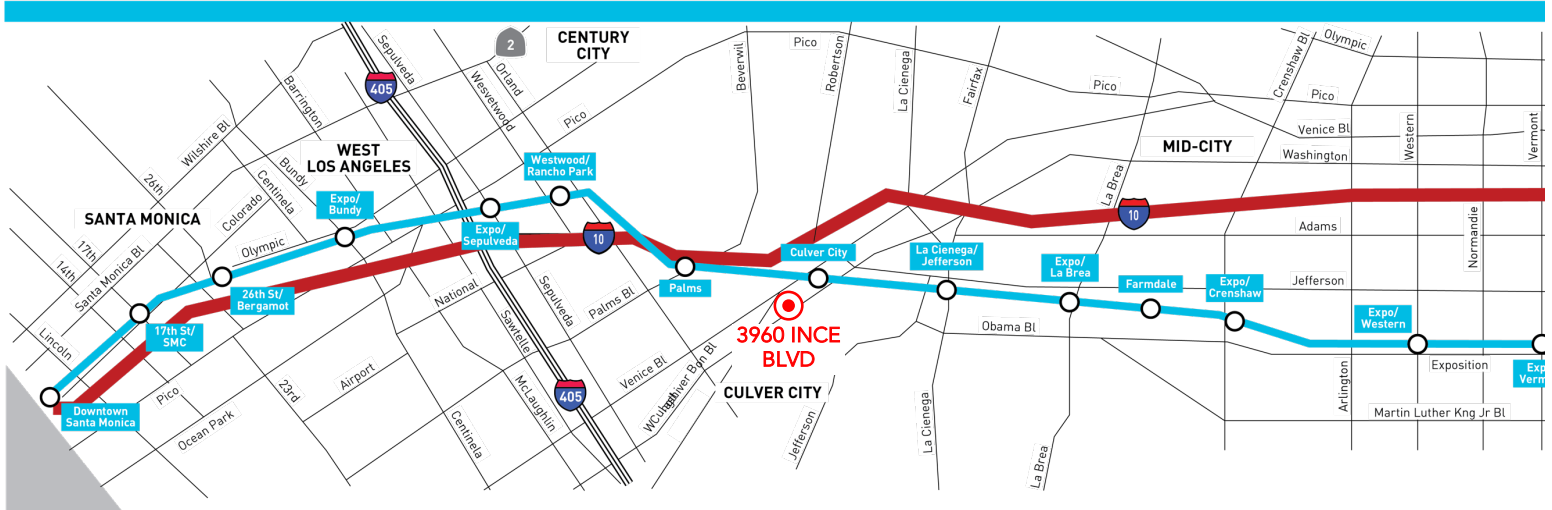


THIRD LEVEL





METRO E LINE (EXPO) – Paramount Laundry (3960 Ince Blvd) is walking distance to the Culver City Station.



Although information has been obtained from sources deemed reliable, neither Owner nor JLL makes any guarantees, warranties or representations, express or implied, as to the completeness or accuracy as to the information contained herein. Any projections, opinions, assumptions or estimates used are for example only. The Property may be withdrawn without notice. Neither Owner nor JLL accepts any liability for any loss or damage sued by any party resulting from reliance on this information. If the recipient of this information has signed a confidentiality agreement regarding this matter, this information is subject to the terms of that agreement. ©2023. Jones Lang LaSalle IP, Inc. All rights reserved. Jones Lang LaSalle Brokerage, Inc. Real Estate License #01856260