

FOR SALE or LEASE

\$1,950,000

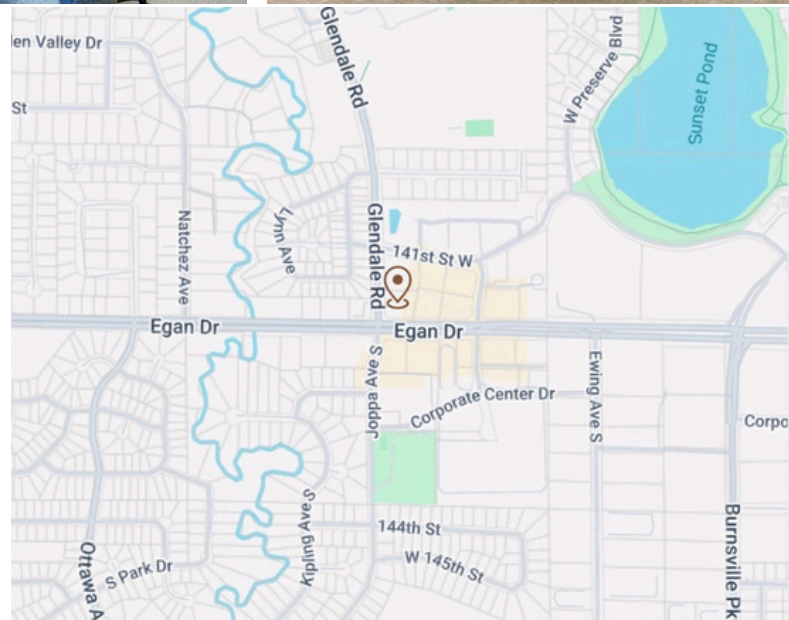
PROFESSIONAL OFFICE SPACE

4200 Egan Dr.
Savage, MN 55378



PROPERTY OVERVIEW

Discover an exceptional 8,976 SF single-level office building in Savage, MN, strategically positioned for maximum visibility and accessibility. This income-generating property is offering a turnkey investment with steady cash flow. Designed as a two-user building, it provides flexibility for investors or future owner-users. Suite 2 is currently available for lease. This suite has 7 windowed offices, 2 conference rooms, bullpen area, and its own private entry. Suite 1 has a long term Vision Clinic in place. All this sits on just over an acre with ample parking, a high traffic location, and a well-maintained professional setting. This is an outstanding opportunity in a thriving commercial corridor! Contact us today for more details.



CONTACTS

Jeremy Feldmann
406.314.3333
jeremyfeldmann@gmail.com
License #40702141

Jim Starr
612.247.5898
jjstarr41@gmail.com
License #20354644



1600 W. 82nd St., Suite 105, Bloomington, MN 55431

ADDITIONAL PHOTOS



4200 Egan Dr.
Savage, MN 55378

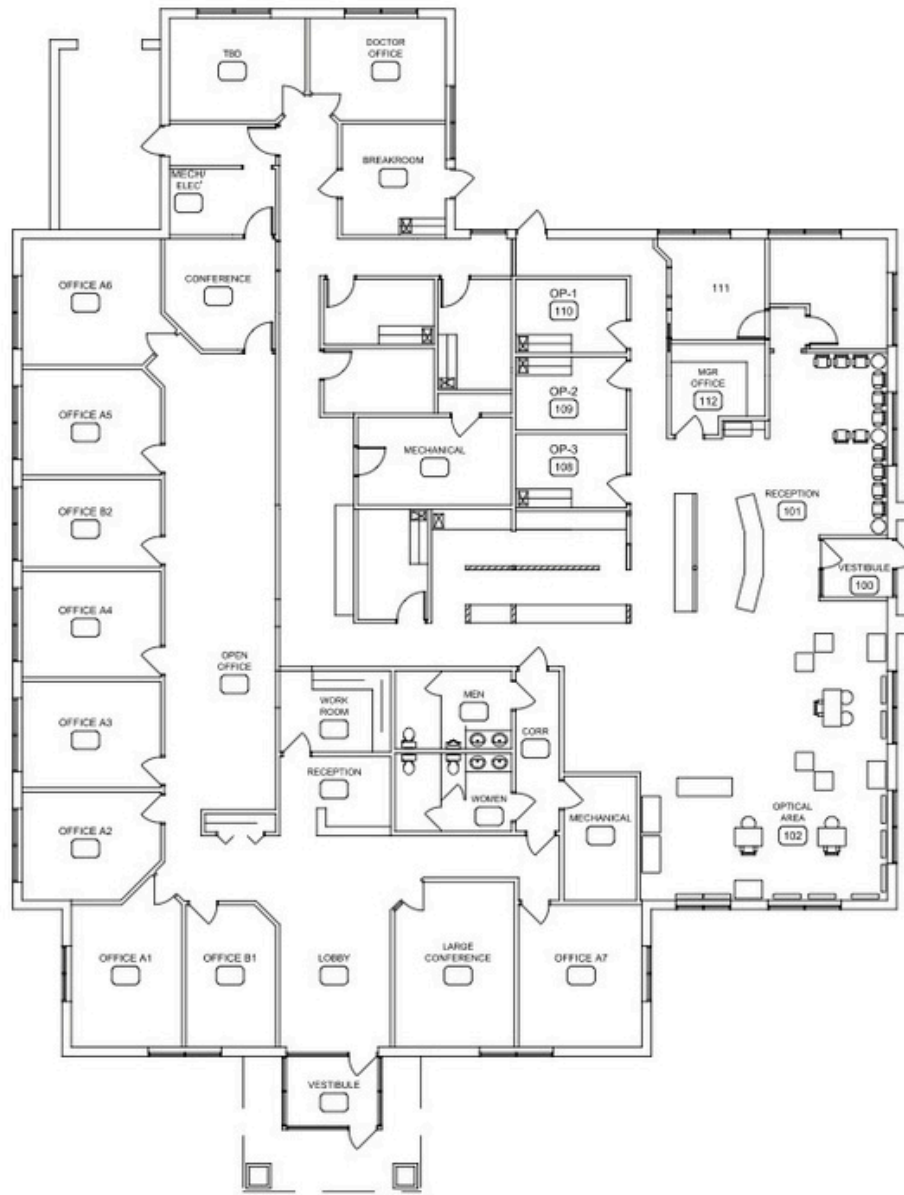
CONTACTS

Jeremy Feldmann
406.314.3333
jeremyfeldmann@gmail.com
License #40702141

Jim Starr
612.247.5898
jjstarr41@gmail.com
License #20354644



FLOOR PLANS



4200 Egan Dr.
Savage, MN 55378

CONTACTS

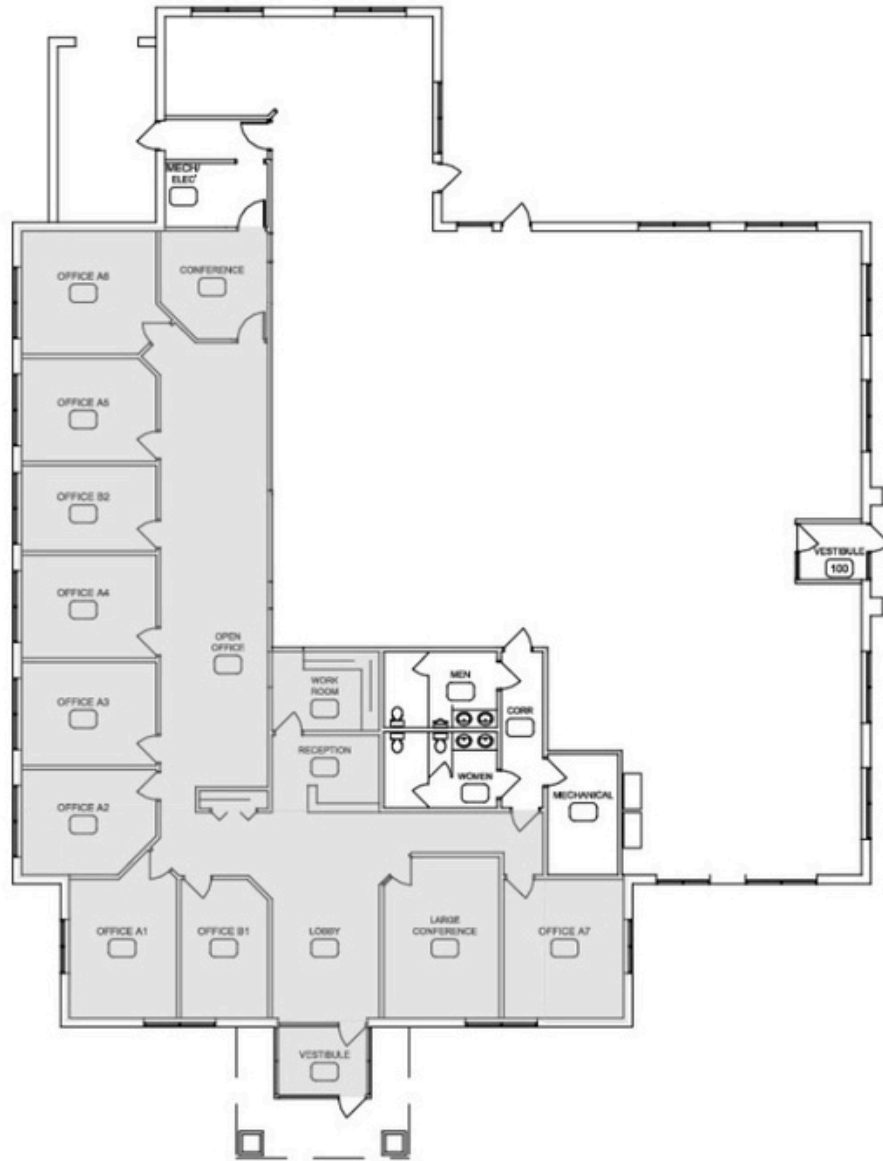
Jeremy Feldmann
406.314.3333
jeremyfeldmann@gmail.com
License #40702141

Jim Starr
612.247.5898
jjstarr41@gmail.com
License #20354644



SUITE 2 - FLOOR PLAN

FOR LEASE - 3544sf



4200 Egan Dr.
Savage, MN 55378

CONTACTS

Jeremy Feldmann
406.314.3333
jeremyfeldmann@gmail.com
License #40702141

Jim Starr
612.247.5898
jjstarr41@gmail.com
License #20354644

