



# Geo Professional Center at Greenbrier

## For Lease

1401 Kristina Way, Chesapeake, VA

GEO  
PROFESSIONAL CENTER  
AT GREENBRIER

GEO DEVELOPMENT CORP.	stewart   TITLE
DOMINION EYE CARE	ASPIRE MASSAGE & CO

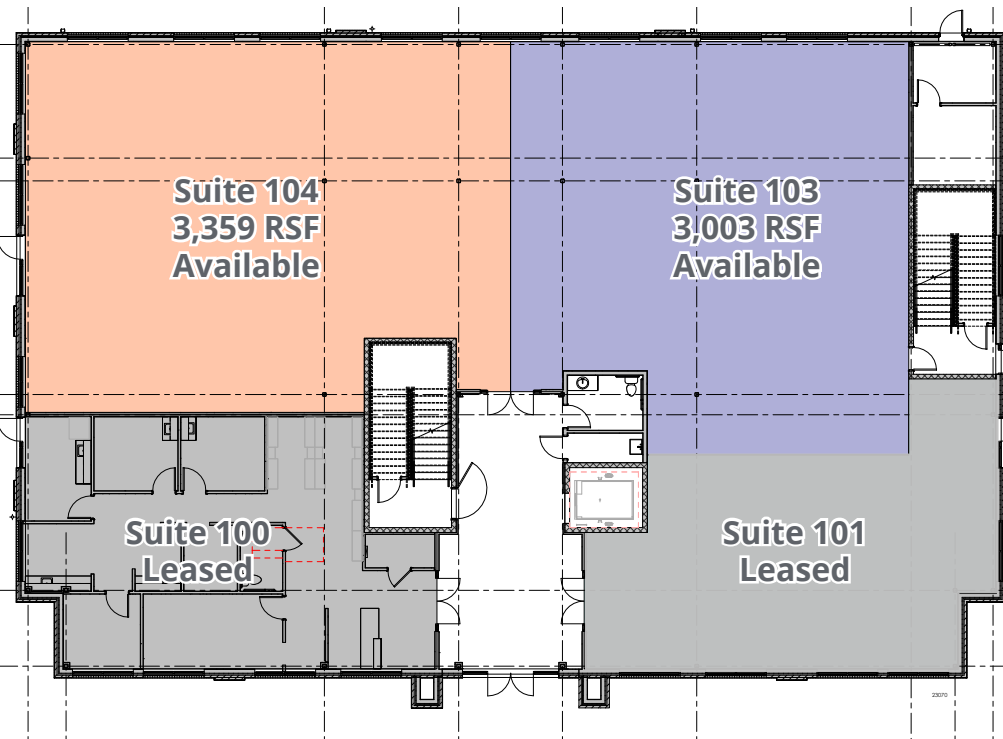
1401

# Features

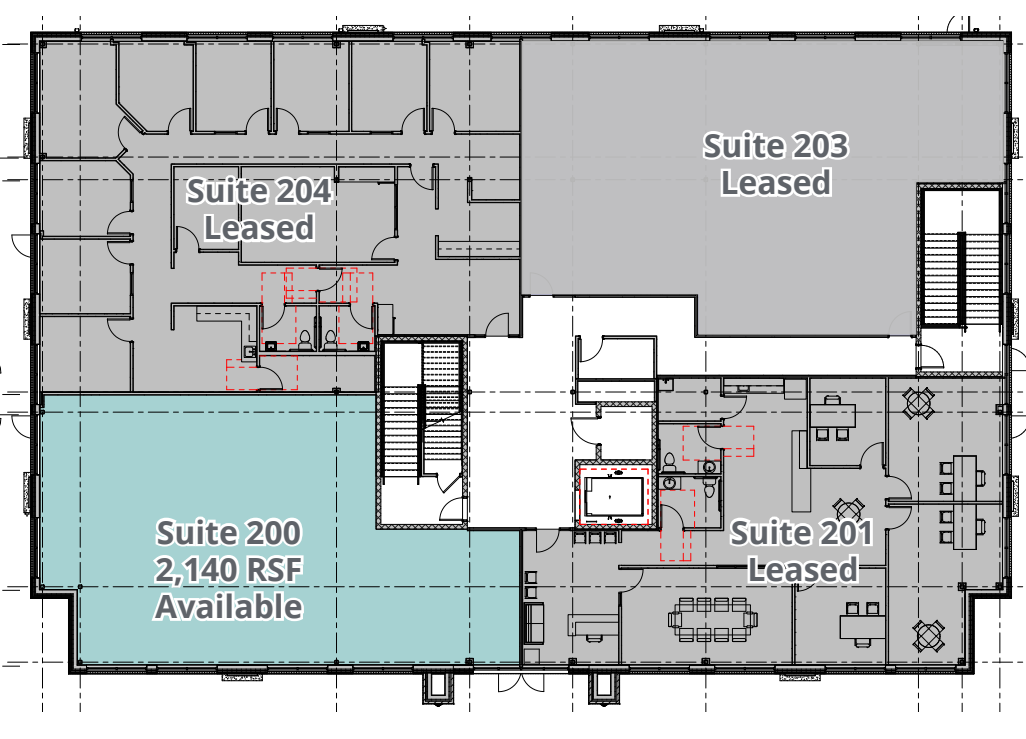
- New Construction in the heart of Greenbrier
- Two story, ±20,000 SF building
- Flexible suite sizes ranging from 2,140 RSF up to 6,362 RSF
- Ideal for medical and professional users
- Monument and building signage opportunities
- Parking spaces on-site
- Generous build out allowance available
- Lease Rate: \$25.50 PSF, Net of Electric + Janitorial

# Floor Plans

First Floor: Up to 6,362 RSF available



Second Floor: Up to 2,140 RSF available







Aerial View

SUMMIT  
POINTE

\$300M  
mixed-use project  
Dollar Tree  
Headquarters

Executive Boulevard

1401 Kristina Way

Eden Way North

Kristina Way





Greenbrier Pkwy

Eden Way North

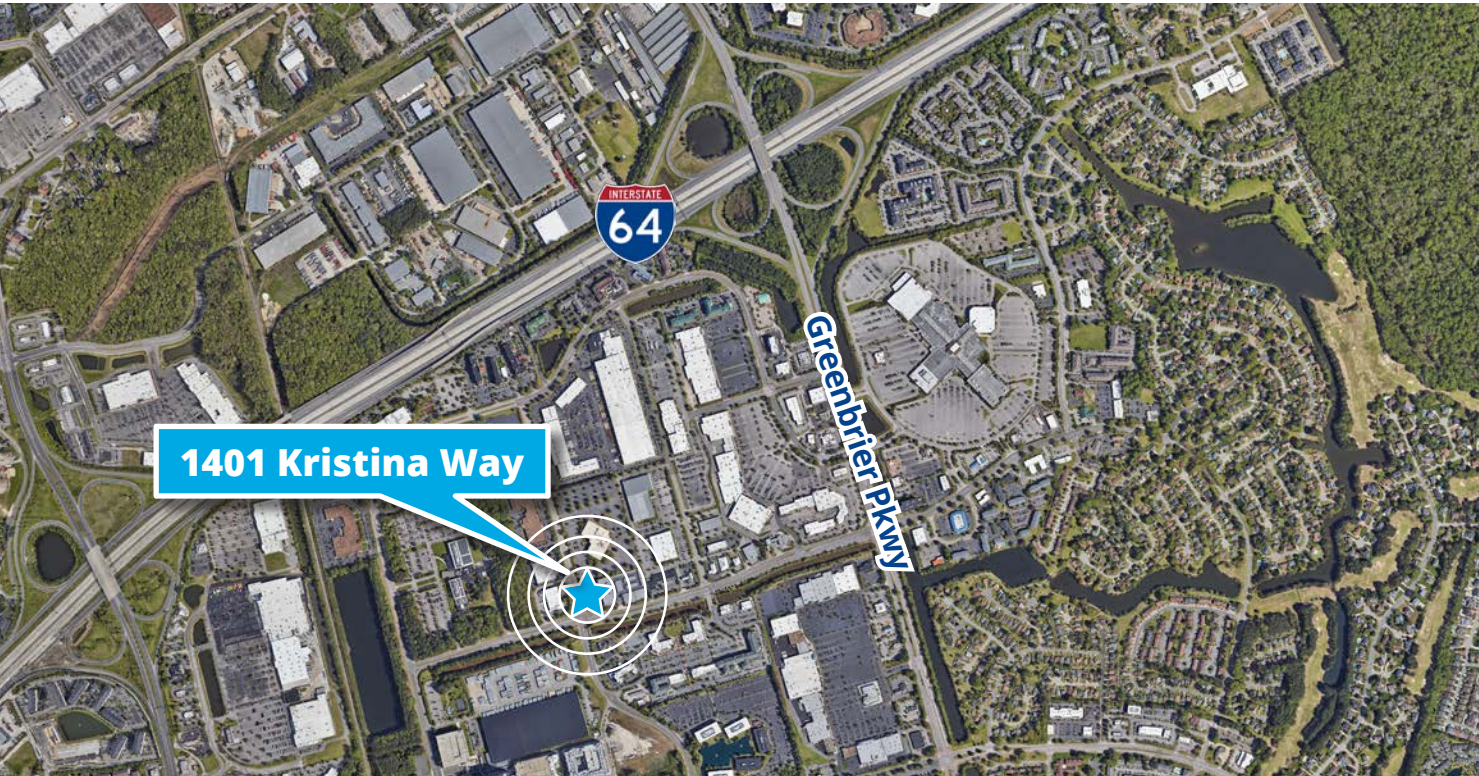
Kristina Way



150 West Main Street  
Suite 1100  
Norfolk, VA 23510  
P: +1 757 490 3300

**Ricky Anderson**  
Executive Vice President  
+1 757 217 1892  
ricky.anderson@colliers.com

**Kevin O'Keefe**  
Senior Vice President  
+1 757 217 1885  
kevin.okeefe@colliers.com



1401 Kristina Way

Greenbrier Pkwy



This document has been prepared by Colliers International for advertising and general information only. Colliers International makes no guarantees, representations or warranties of any kind, expressed or implied, regarding the information including, but not limited to, warranties of content, accuracy and reliability. Any interested party should undertake their own inquiries as to the accuracy of the information. Colliers International excludes unequivocally all inferred or implied terms, conditions and warranties arising out of this document and excludes all liability for loss and damages arising there from. This publication is the copyrighted property of Colliers International and/or its licensor(s). ©2024. All rights reserved.