

# 1928 CAMPBELL RD

## ±1.14 ACRE HARD CORNER

### HOUSTON, TX

**PRICE REDUCED**



**KRISTEN MCDADE**  
Managing Director  
T: +1 713 331 1796  
kristen.mcdade@cushwake.com

**MATTHEW DAVIS**  
Senior Director  
T: +1 713 331 1798  
matthew.davis@cushwake.com

**CHARLIE MCGAHREN**  
Associate  
T: +1 713 331 1772  
charlie.mcgahren@cushwake.com

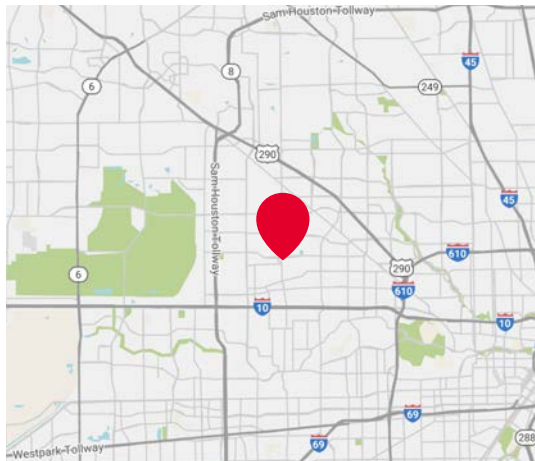
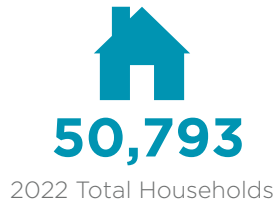
**RACHEL GRANSTROM**  
Associate  
T: +1 713 260 0237  
rachel.granstrom@cushwake.com



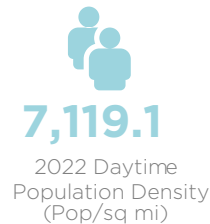
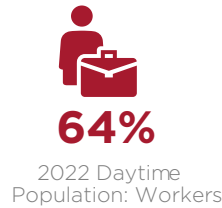
**CUSHMAN &  
WAKEFIELD**

# 1928 CAMPBELL RD HOUSTON, TX

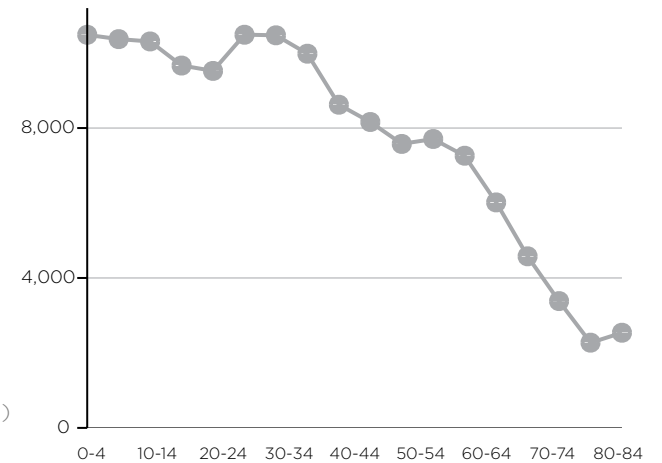
## ±1.14 ACRE HARD CORNER



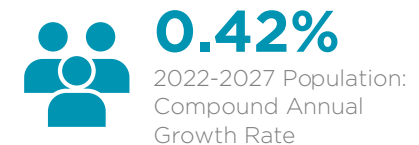
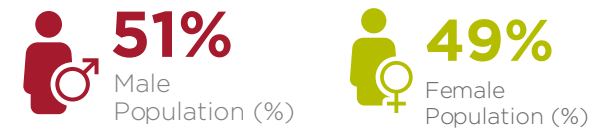
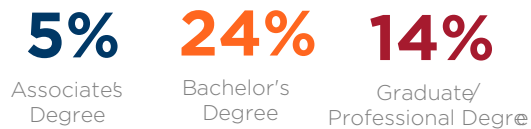
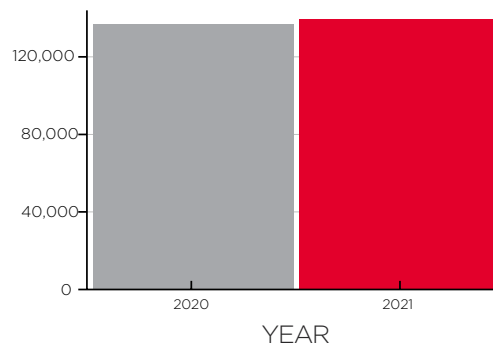
### EMPLOYMENT



### POPULATION BY AGE GROUP



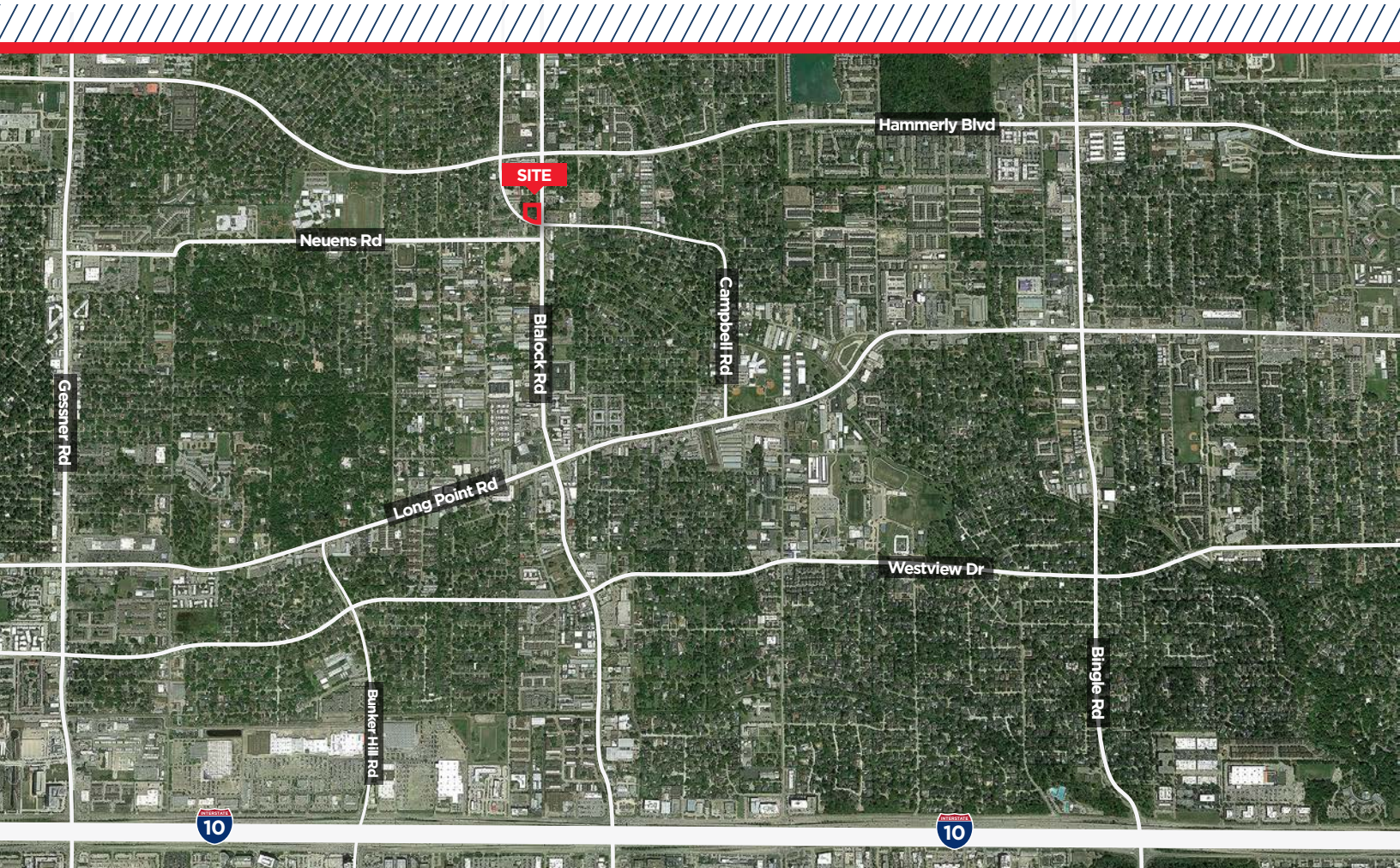
### POPULATION TIME SERIES 2010-2021



# 1928 CAMPBELL RD

## ±1.14 ACRE HARD CORNER

### HOUSTON, TX



- ±1.14 Acres located at the NWC of Blalock Rd and Campbell Rd, Houston, TX
- 259' of frontage on Blalock Rd including 2 curb cuts
- Approximately 240' of frontage on Campbell Rd with 1 curb cut
- Signalized intersection
- No Floodplain
- Spring Branch ISD
- Call Brokers for Pricing  
**PRICE REDUCED**

**KRISTEN MCDADE**  
Managing Director  
T: +1 713 331 1796  
kristen.mcdade@cushwake.com

**CHARLIE MCGAHREN**  
Associate  
T: +1 713 331 1772  
charlie.mcgahren@cushwake.com

**MATTHEW DAVIS**  
Senior Director  
T: +1 713 331 1798  
matthew.davis@cushwake.com

**RACHEL GRANSTROM**  
Associate  
T: +1 713 260 0237  
rachel.granstrom@cushwake.com

