



1675 Watertower Place

East Lansing, Michigan 48823

Property Highlights

- Prestigious Watertower Place in East Lansing
- Suite 600: Medical/General Office space
- 2,661 square feet
- Currently a neurology office, could be general office
- Several private individual offices in suite

Offering Summary

| | |
|----------------|--------------------|
| Lease Rate: | \$15.00 SF/yr (MG) |
| Building Size: | 14,912 SF |
| Available SF: | 2,661 SF |

For More Information

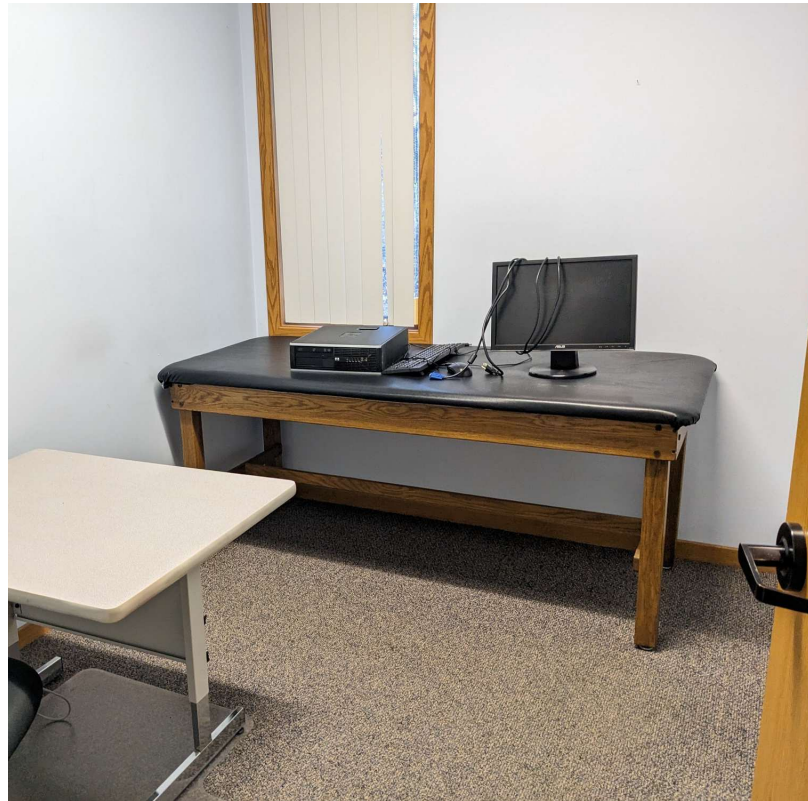


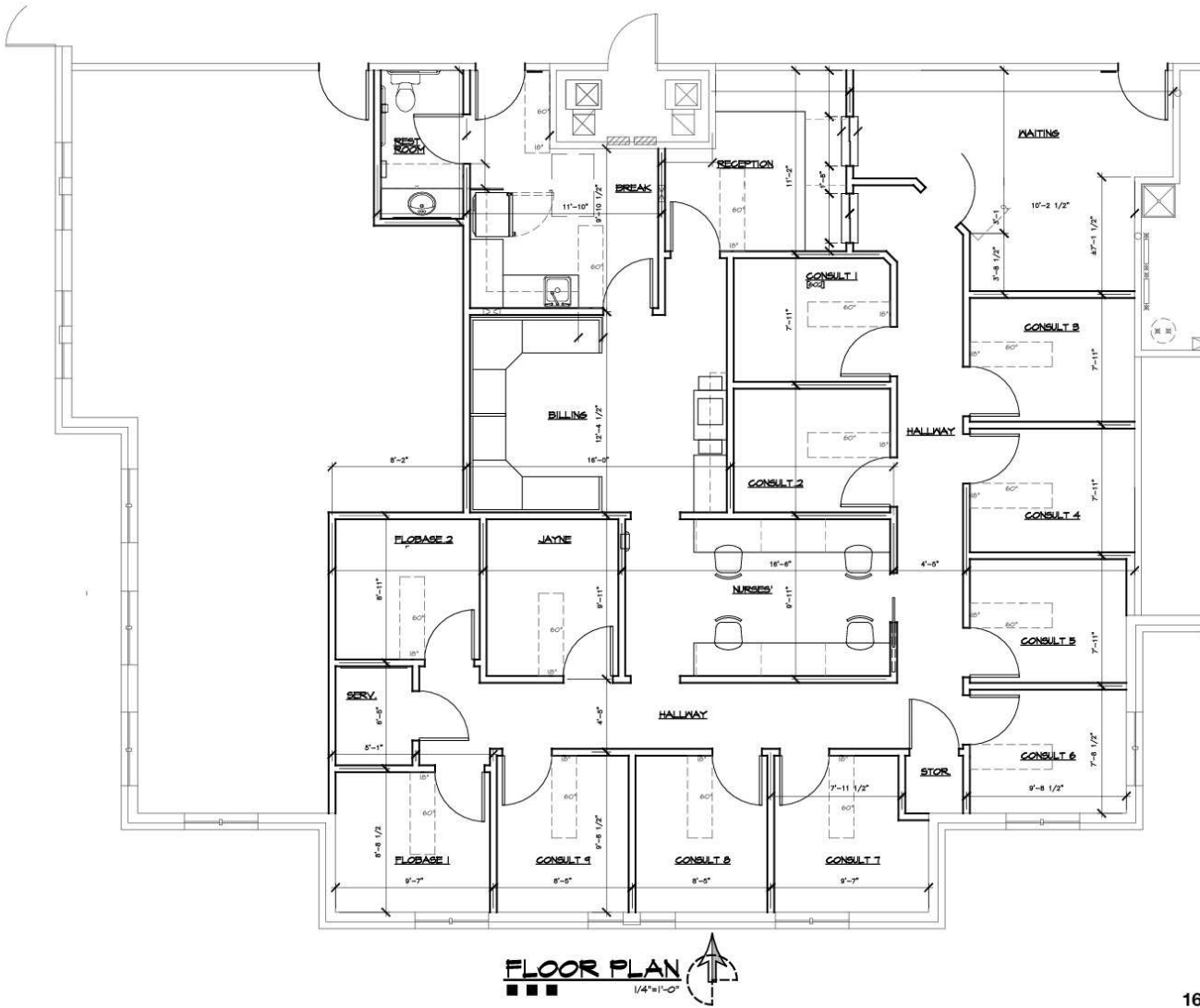
Dave Robinson

Associate Broker

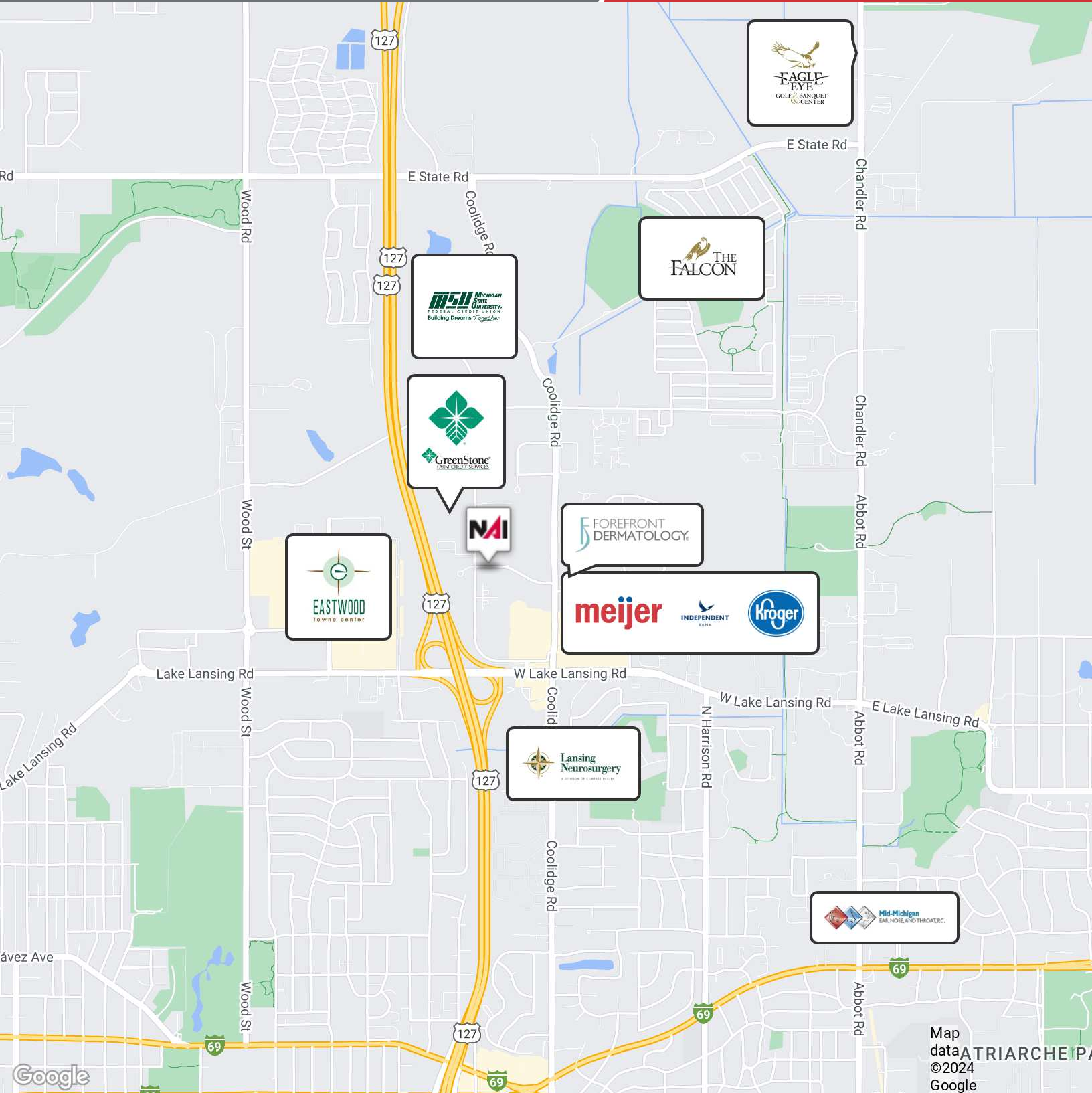
O: 517 487 9222 | C: 517 599 6846

drobinson@naimidmichigan.com

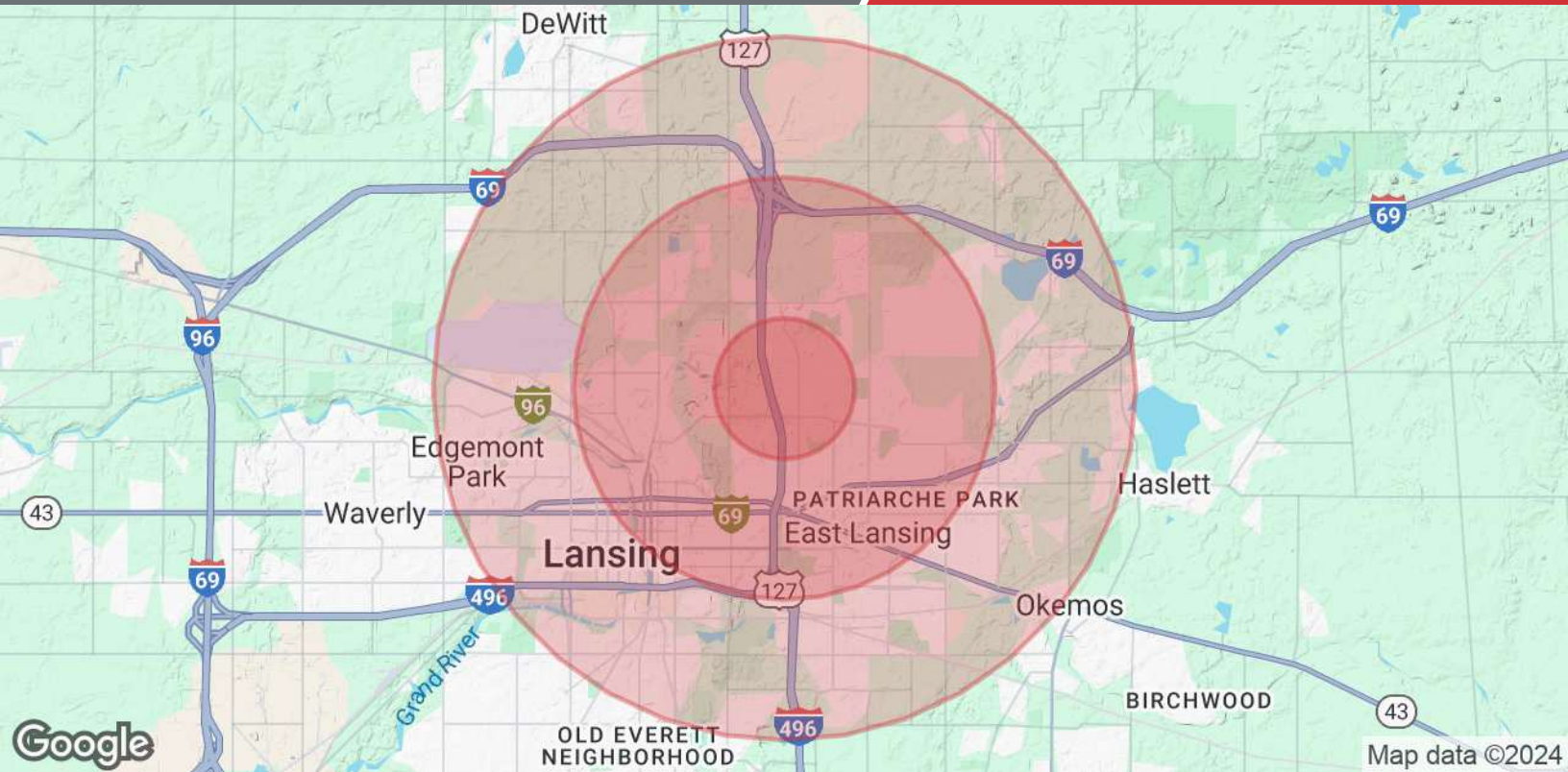




**1675 WATERTOWER
 EAST LANSING, MI**



Map data ©2024 ATRIARCHE/P
©2024 Google



| Population | 1 Mile | 3 Miles | 5 Miles |
|--------------------------------|---------------|----------------|----------------|
| Total Population | 6,924 | 66,528 | 160,238 |
| Average Age | 32.8 | 29.7 | 29.3 |
| Average Age (Male) | 32.9 | 29.9 | 29.0 |
| Average Age (Female) | 32.6 | 30.0 | 29.7 |
| Households & Income | 1 Mile | 3 Miles | 5 Miles |
| Total Households | 3,183 | 25,874 | 58,527 |
| # of Persons per HH | 2.2 | 2.6 | 2.7 |
| Average HH Income | \$58,090 | \$54,807 | \$51,630 |
| Average House Value | \$189,082 | \$153,369 | \$142,964 |

* Demographic data derived from 2020 ACS - US Census