

# LEASE

## THE CREEKSIDE MALL

3501 SW 2nd AVE Gainesville, FL 32607



### PROPERTY DESCRIPTION

The thriving Creekside Mall is located just blocks from Downtown, UF, and within walking distance of many apartments and other amenities. The plaza features excellent roadside visibility, great signage and plenty of parking. Shopping and restaurants are abundant in the area as well as the daily vehicle traffic and foot traffic!

The plaza currently houses a mix of retail and office spaces, as well as the new Las Carretas Mexican Restaurant! Lease rates are based upon 5 year terms.

### OFFERING SUMMARY

Building Size:

Lease Type: NNN (\$4.16/SF)

Zoning: U6

Traffic Count: 14000 AADT

SPACES	BUILDING SIZE:	SPACE SIZE
Suite 2400	\$13.50 SF/yr	1,600 SF
Suite 2300	\$13.50 SF/yr	400 - 940 SF

DEMOGRAPHICS	0.25 MILES	0.5 MILES	1 MILE
Total Households	634	1,354	4,142
Total Population	1,176	2,980	10,033
Average HH Income	\$94,496	\$83,350	\$62,164

**Craig Carter**  
(352)339-4038

ccarter@mmparrish.com

**Dean R. Cheshire**  
(352)745-1883

Dean@mmparrish.com

**Michelle Carter**  
(352)339-5734

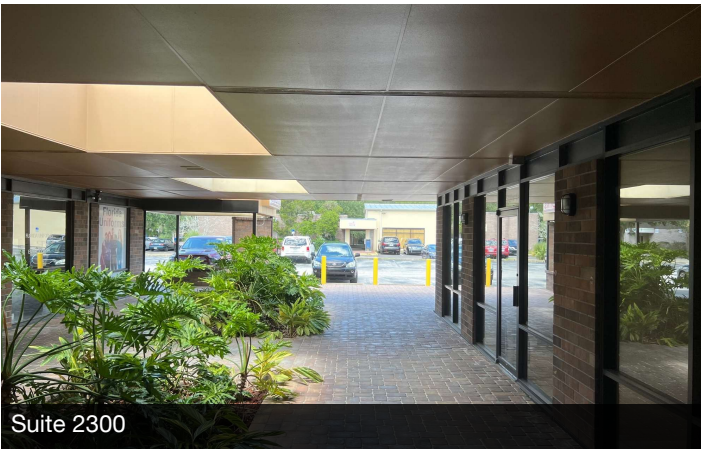
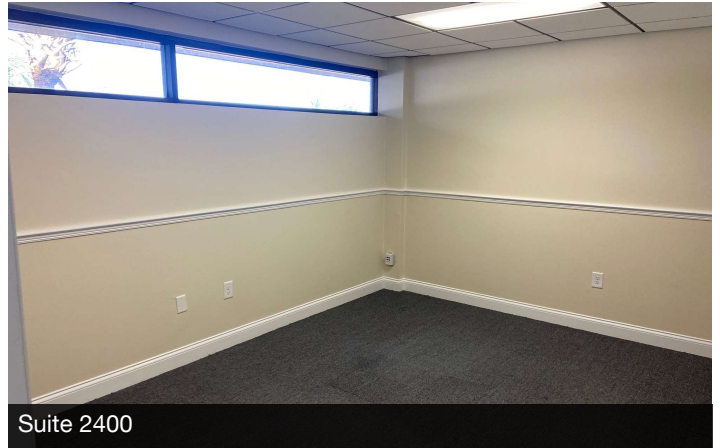
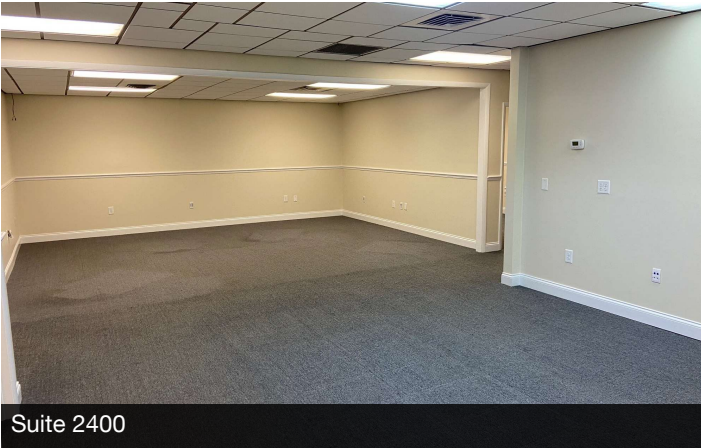
mcarter@mmparrish.com



**COLDWELL BANKER  
COMMERCIAL**  
M.M. PARRISH REALTORS

# LEASE

**THE CREEKSIDE MALL**  
3501 SW 2nd AVE Gainesville, FL 32607



**Craig Carter**  
(352)339-4038  
ccarter@mmparrish.com

**Dean R. Cheshire**  
(352)745-1883  
Dean@mmparrish.com

**Michelle Carter**  
(352)339-5734  
mcarter@mmparrish.com

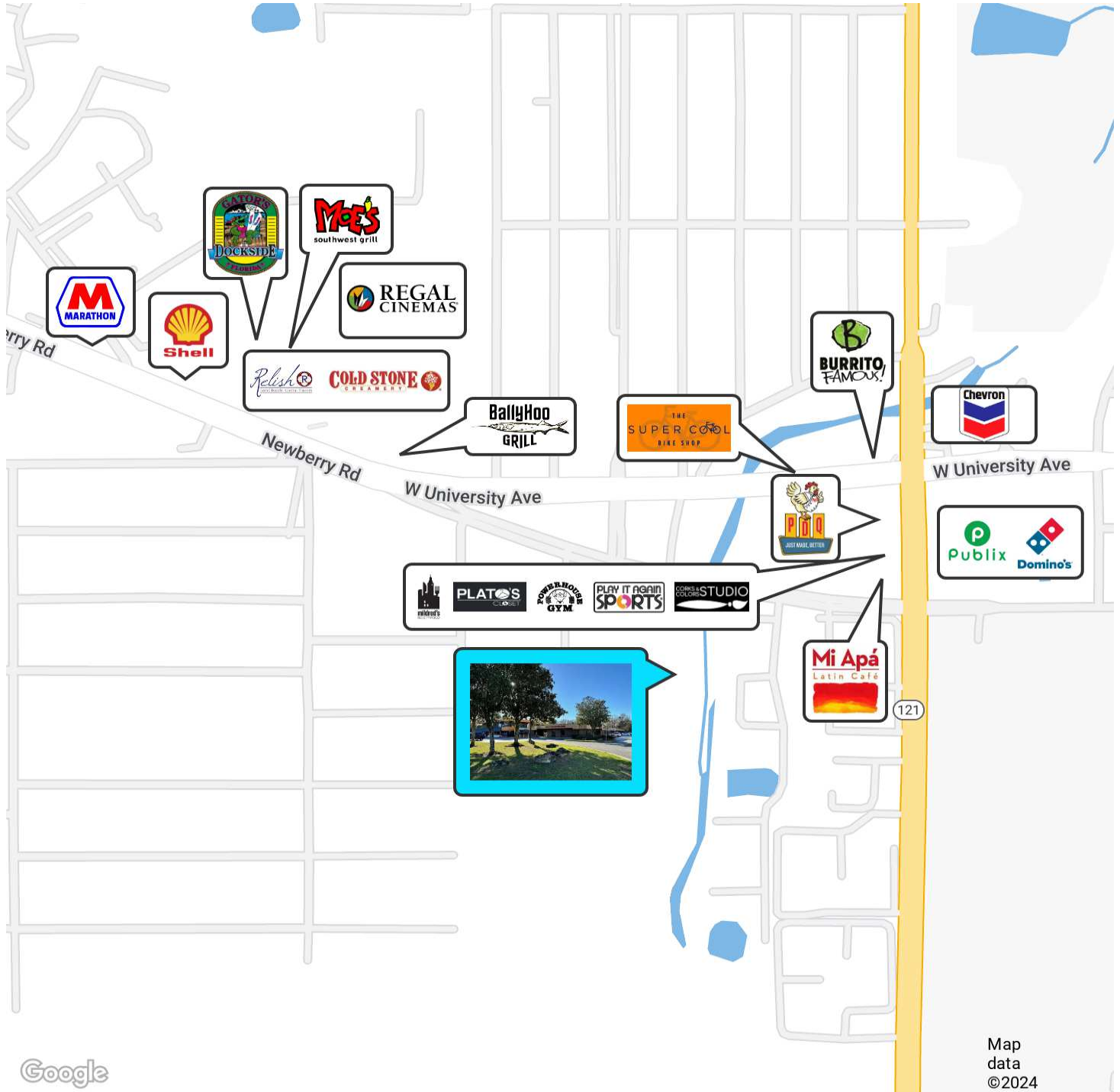


**COLDWELL BANKER  
COMMERCIAL**  
M.M. PARRISH REALTORS

# LEASE

## THE CREEKSIDE MALL

3501 SW 2nd AVE Gainesville, FL 32607



**Craig Carter**  
(352)339-4038  
ccarter@mmparrish.com

**Dean R. Cheshire**  
(352)745-1883  
Dean@mmparrish.com

**Michelle Carter**  
(352)339-5734  
mcarter@mmparrish.com



**COLDWELL BANKER  
COMMERCIAL**  
M.M. PARRISH REALTORS



352.745.1883

dean@mmparrish.com

352.339.5734

mcarter@mmparrish.com

352.339.4038

ccarter@mmparrish.com

Craig Carter, Dean Cheshire, and Michelle Carter make up the CRE Pro Team. Their complementary skillsets make them formidable allies who will go the extra mile to bring closure for their clients. All three have been business owners in Alachua County for many years, which gives them insight into local laws and code requirements, relationships with folks within the industry, and a deep understanding of the needs of businesses and investors.

- **Highly Specialized:** 100% of their focus is commercial real estate.
- **Consistent Producers:** Awarded “Top Two” status for being in the top 2% of Coldwell Banker Commercial Realtors nationwide in 2023, with multi-million-dollar production year after year.
- **Global Resources:** The Team has the backing and longevity (since 1906) of Coldwell Banker Commercial agents and database assets around the U.S. and the world. Their brokerage, M.M. Parrish Realtors, who have been in our community since 1911, gives the CRE Pro Team local knowledge and global influence to make them a force in the commercial real estate market.
- **In-the-Know:** As members of the largest MLS in the state of Florida, the Team deploys listings on all the major commercial sites, including Loopnet/Costar, Crexi, CBC Worldwide, and more. Their strength in networking and regional relationships can bring off-market deals to their clients.
- **Anticipating Needs and Fixing Problems:** The Team identifies potential roadblocks before they become your problem and harnesses their resources to bring your deal to completion.

**Call to see what the CRE Pro Team can do for you!**

