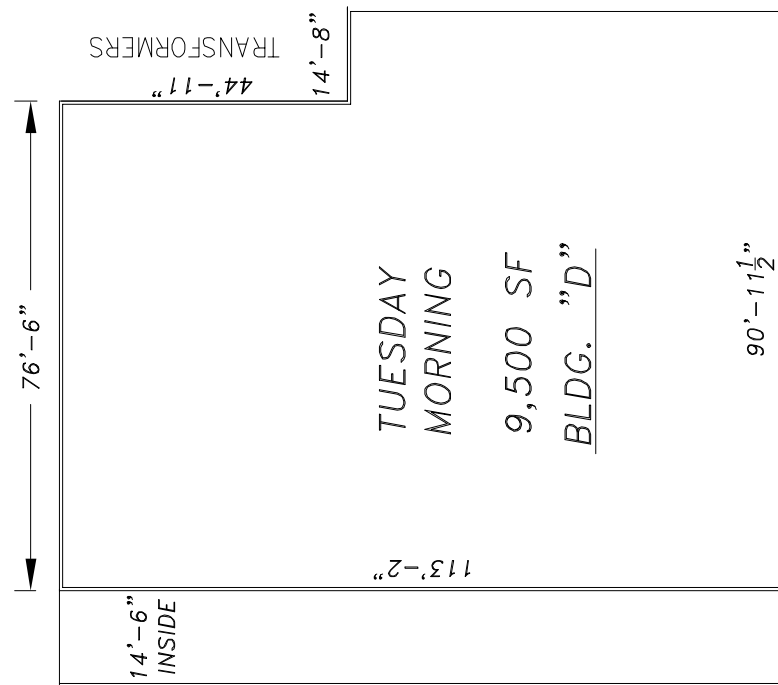
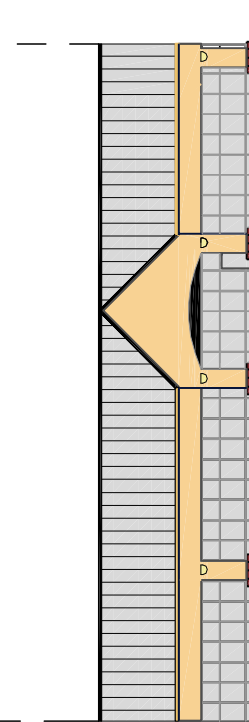
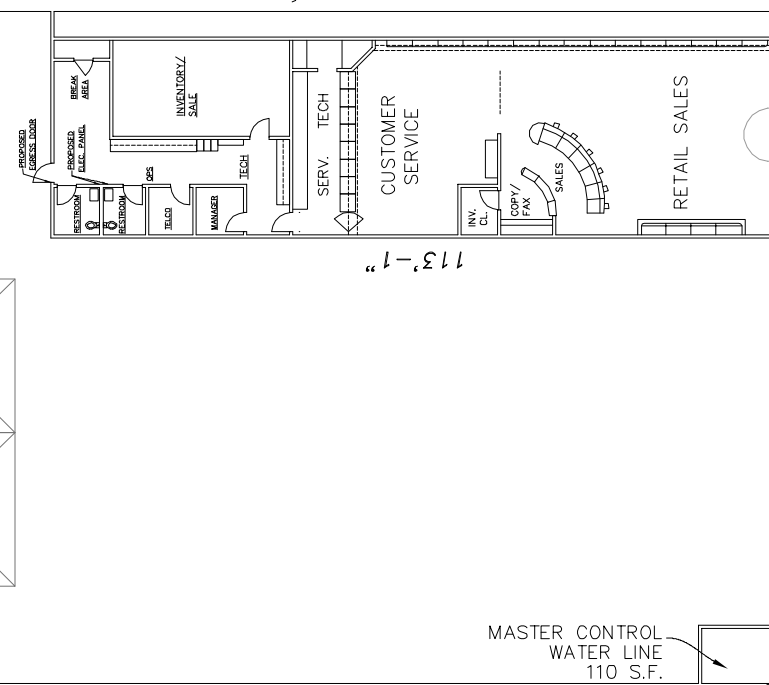
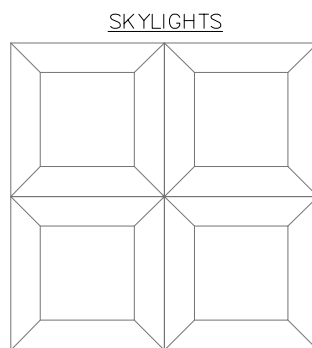


BLDG. "A"  
**SEARS**

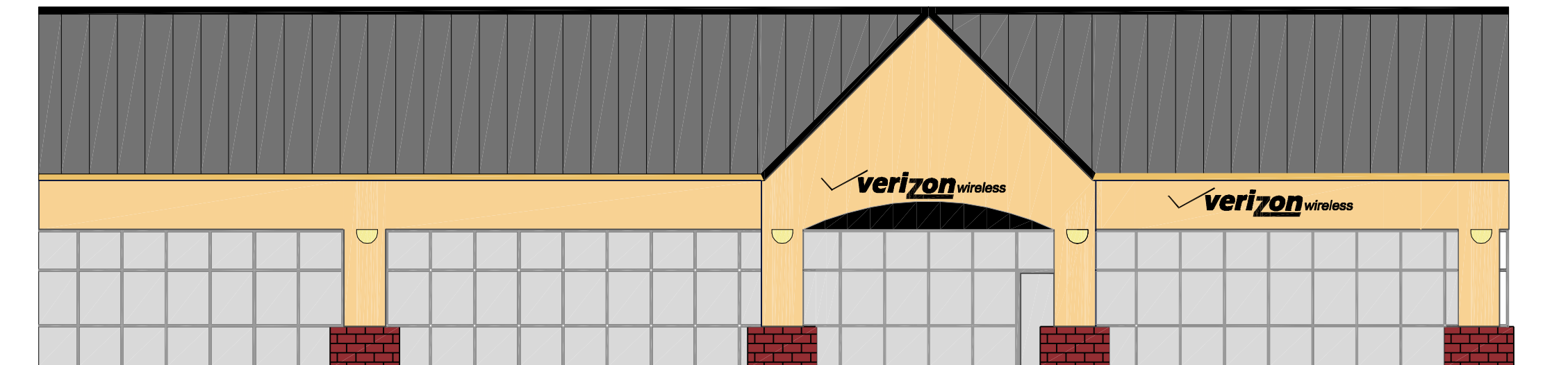
**verizon** wireless  
 3,495 S.F.




AVAILABLE  
 24,179 SF



BLDG. "C"  
**TARGET**



Architect: Harold Dalke, AIA	REVISIONS
Drawn By: K. BURNES	00.00.00
Checked By: Harold Dalke, AIA	
Project Number: 02.28.03	
Date Created: kwork-wa.ssc05m1r-cv1	
Scale: 1" = 150'	
SITE PLAN - AVAILABILITY SOUTH SOUND CENTER	
SLEATER KINNEY ROAD AND PACIFIC AVENUE LACEY, WA 98503	
 Architects & Planners P.O. Box 3487 Phone: 360.491.6850 Lacey Washington 98503 Fax: 360.459.8747	
SHEET <b>A-1</b> OF <b>A-1</b>	