



## **6740 Crosswinds Dr, Suite I**

6740 Crosswinds Dr, Saint Petersburg, FL 33710



**Wesley Sanders**

Entreken Associates, Inc  
6740 Crosswinds Dr N, Suite H,  
St Petersburg, FL 33710  
727-256-8025  
wsanders@EArealstate.com

# 6740 Crosswinds Dr, Suite I

\$550 to \$650 per Month per Suite



Rental Rate: \$550 to \$650 per Month per Suite

Min. Divisible: 77 SF

Property Type: Office

Building Class: B

Rentable Building Area: 12,890 SF

Year Built: 1982, Renovated 2024

Walk Score ®: 68 (Somewhat Walkable)

Transit Score ®: 47 (Some Transit)

Rental Rate Mo: \$550 to \$650 per Month per Suite

## 2nd Floor Ste I

Space Available	410 SF (Four Offices)
Rental Rate	\$2,000 per Month
Date Available	Immediate
Service Type	Full Service
Space Type	Sublet
Space Use	Office(Coworking)

Enjoy four Executive Office Suites with your own entrance, within a Real Estate Coworking Space. The office has shared rest rooms, a kitchen, conference room, high speed WiFi included, printing/copying up to 300 pages per month included, and phone service is available at an additional cost. Desk included. Only \$2,000 per Month, all inclusive. The building is just west of the Tyrone Square retail, just south of 22nd Ave N, and west of 66th Street N, behind Best Buy. Neighboring offices have a variety of professional services and medical offices. \$2,000 per month. Full Service Gross lease- All utilities and WiFi included in the rental rate. Copying/printing up to 300 pages per month also included in the rent. Other Office Suites may be available for as low as \$550 per month. 2nd Floor Office Space. Building does not have an elevator.

## 2nd Floor Ste I-1

Space Available	127 SF (One Office)
Rental Rate	\$625 per Month
Date Available	Immediate
Service Type	Full Service
Space Type	Sublet
Space Use	Office(Coworking)

Enjoy a corner located Executive Office Suite with an entrance, within a Real Estate Coworking Space. The office has shared rest rooms, a kitchen, conference room, high speed WiFi included, printing/copying up to 300 pages per month included, and phone service is available at an additional cost. Desk included. Only \$625 per Month, all inclusive. The building is just west of the Tyrone Square retail, just south of 22nd Ave N, and west of 66th Street N, behind Best Buy. Neighboring offices have a variety of professional services and medical offices. \$625 per month. Full Service Gross lease- All utilities and WiFi included in the rental rate. Copying/printing up to 300 pages per month also included in the rent. Other Office Suites may be available for as low as \$550 per month. This unit could be leased in conjunction with an adjoining unit. 2nd Floor Office Space. Building does not have an elevator.

## 2nd Floor Ste I-2

Space Available	125 SF (One Office)
Rental Rate	\$650 per Month
Date Available	Immediate
Service Type	Full Service
Space Type	Sublet
Space Use	Office(Coworking)

Enjoy a corner located Executive Office Suite within a Real Estate Coworking Space. The office has shared rest rooms, a kitchen, conference room, high speed WiFi included, printing/copying up to 300 pages per month included, and phone service is available at an additional cost. Desk included. Only \$650 per Month, all inclusive. The building is just west of the Tyrone Square retail, just south of 22nd Ave N, and west of 66th Street N, behind Best Buy. Neighboring offices have a variety of professional services and medical offices. \$650 per month. Full Service Gross lease- All utilities and WiFi included in the rental rate. Copying/printing up to 300 pages per month also included in the rent. Other Office Suites may be available for as low as \$550 per month. This unit could be leased in conjunction with an adjoining unit. 2nd Floor Office Space. Building does not have an elevator.



## 2nd Floor Ste I-3

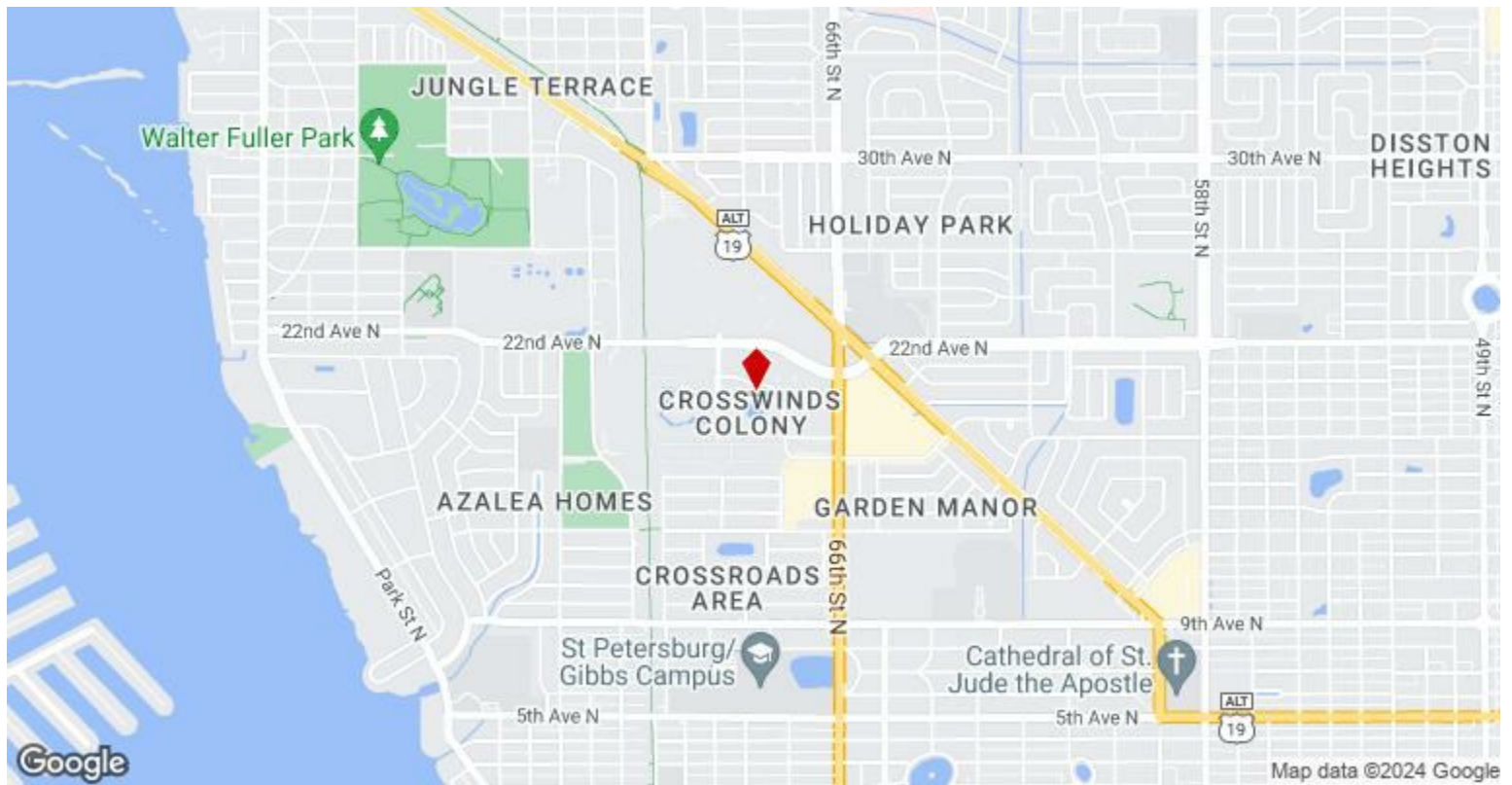
Space Available	77 SF (One Office)
Rental Rate	\$550 per Month
Date Available	Immediate
Service Type	Full Service
Space Type	Sublet
Space Use	Office(Coworking)

Enjoy a corner located Executive Office Suite within a Real Estate Coworking Space. The offices have shared rest rooms, a kitchen, conference room, high speed WiFi included, up to 300 pages per month printing/copying included, desk included, and phone service is available at an additional cost. The building is just west of the Tyrone Square retail, just south of 22nd Ave N, and west of 66th Street N, behind Best Buy. Neighboring offices have a variety of professional services and medical offices.\$550 per month. Full Service Gross lease- All utilities and WiFi included in the rental rate. Copying/printing up to 300 pages per month also included in the rent. Other Office Suites may be available for as low as \$550 per month. Larger exterior suites with windows to the outside available at slightly higher costs.2nd Floor Office Space. Building does not have an elevator.

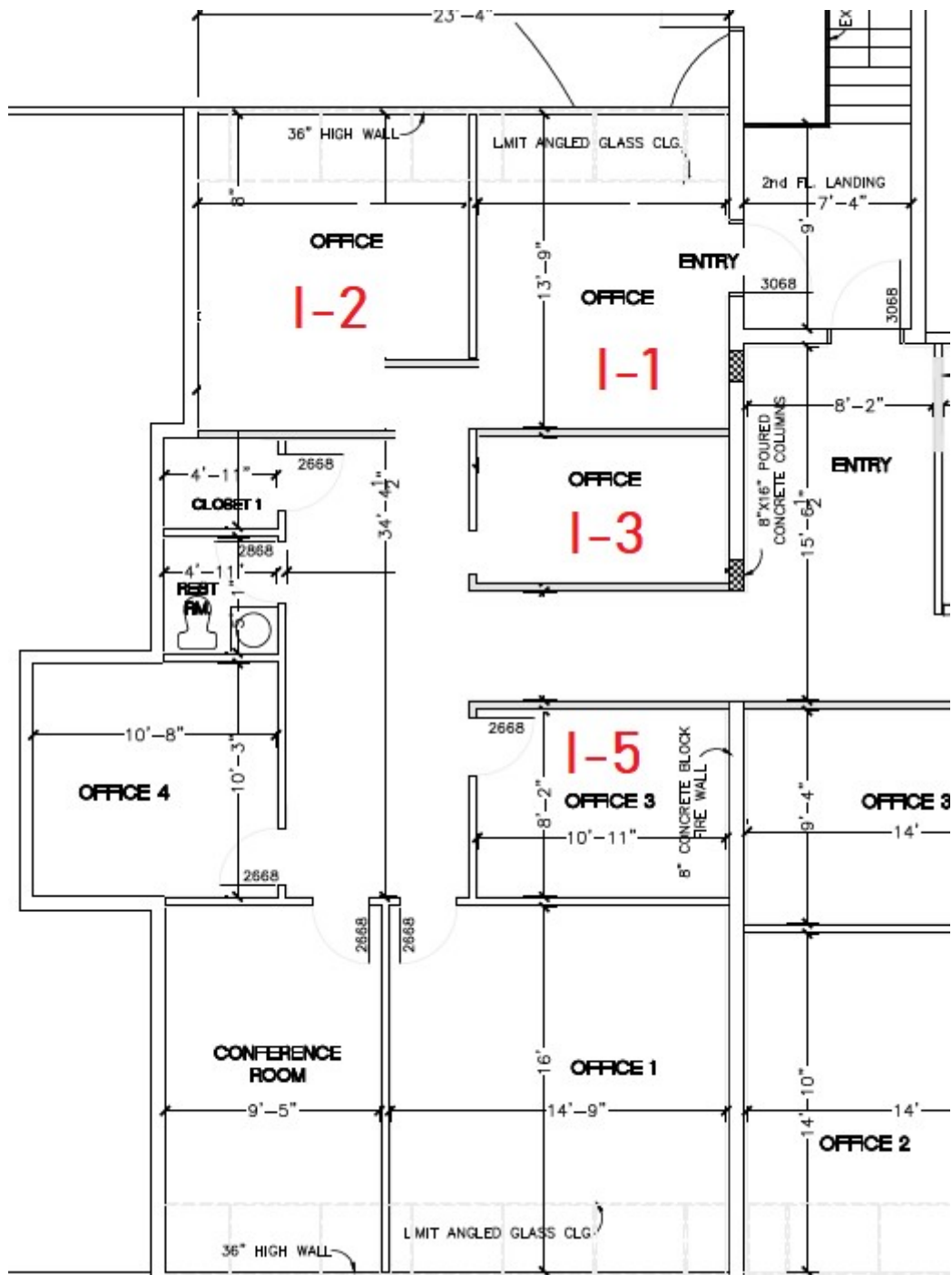
## 2nd Floor Ste I-5

Space Available	79 SF (One Office)
Rental Rate	\$550 per Month
Date Available	Immediate
Service Type	Full Service
Space Type	Sublet
Space Use	Office(Coworking)

Enjoy a corner located Executive Office Suite within a Real Estate Coworking Space. The offices have shared rest rooms, a kitchen, conference room, high speed WiFi included, up to 300 pages per month printing/copying included, desk included, and phone service is available at an additional cost. Only \$550 per Month, all inclusive.The building is just west of the Tyrone Square retail, just south of 22nd Ave N, and west of 66th Street N, behind Best Buy. Neighboring offices have a variety of professional services and medical offices.\$550 per month. Full Service Gross lease- All utilities and WiFi included in the rental rate. Copying/printing up to 300 pages per month also included in the rent. Other Office Suites may be available for as low as \$550 per month. Larger exterior suites with windows to the outside available at slightly higher costs.2nd Floor Office Space. Building does not have an elevator.



**6740 Crosswinds Dr, Saint Petersburg, FL 33710**





## Property Photos



Building Photo



Building Photo



## Property Photos



Building Photo



Building Photo



**Suite I-1**



**Suite I-2**





**Suite I-3**



**Suite I-5**

