

OFFICE AVAILABLE FOR LEASE

1436 A Street, Suite 102 & 104, Washougal WA



Suite 102 300 SF+/- \$16.00/SF plus utilities = \$460.00

Suite 104 600 SF+/- \$16.00/SF plus utilities = \$860.00

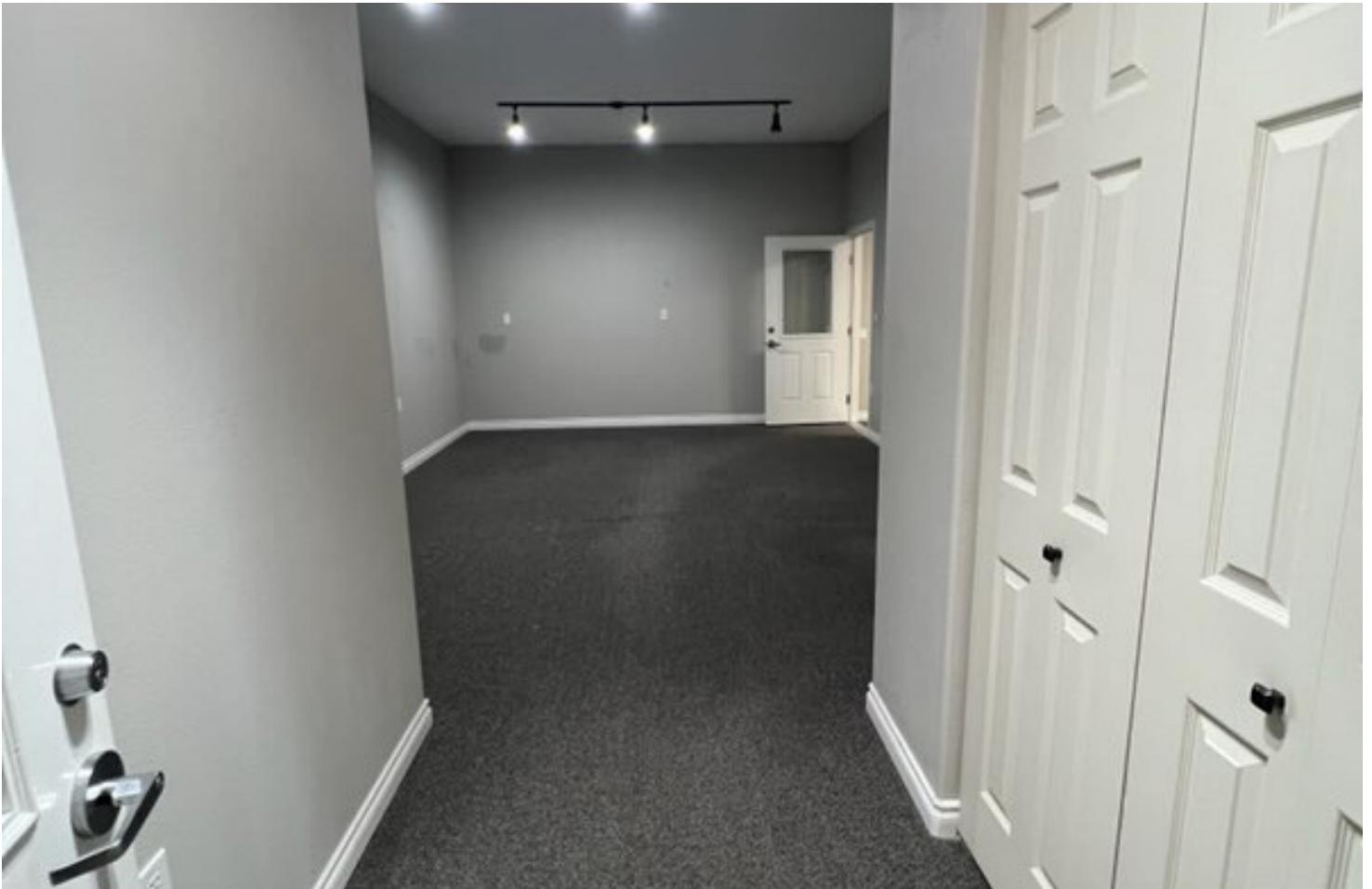
This property is conveniently located off Washougal River Road and has easy access to HWY 14. This unique building has vacant office space located on the first floor. Located close to City Hall, the town library, Steamboat Landing Park, Reflection Plaza, Pendleton Woolen Mills, and other popular spots.

Katie Panarra
360.823.5101
Katie@MAJCRE.com

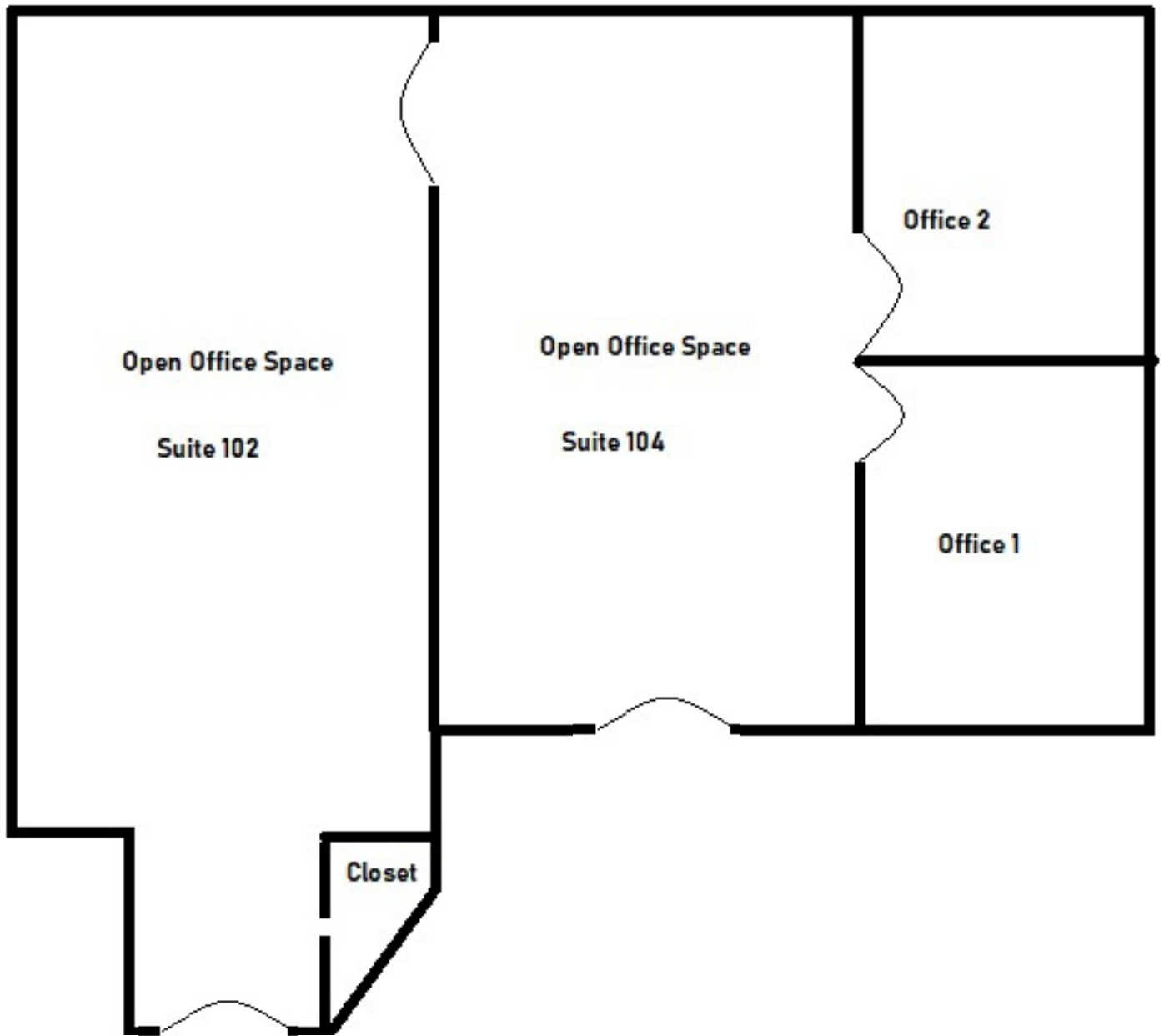


MAJ COMMERCIAL REAL ESTATE

300 W 15th Street, Ste 200, Vancouver WA
Office: 360.699.4494 | www.MAJCRE.com



While the information provided herein is not guaranteed, it has been obtained from sources we deem reliable.



Suite 102 300 SF+/- \$16.00/SF plus utilities = \$460.00

Suite 104 600 SF+/- \$16.00/SF plus utilities = \$860.00