



## SEC Frontier St & Battaglia Dr Eloy, Arizona 85131

### Property Features

- 1,000 feet of frontage on Frontier Street
- Property adjacent to 3 streets for easy ingress/egress
- Great visibility and exposure
- Adjacent to brand new Circle K
- Ability to subdivide into smaller parcels
- Seller financing available

Sale	\$200,000 per Acre
Land Size (AC)	11.13 AC
Land SF	484,990 SF
Primary Use	Commerical
Zoning	C-2, City of Eloy
Parcel #	408-02-0280



### Demographics

	1 Mile	3 Miles	5 Miles
Median Age	33.0	34.2	36.4
Population	2,449	6,409	14,844
Average HH Income	\$46,762	\$57,937	\$73,033

### Traffic Counts

	VPD
Casa Grande Pichaco Hwy	5,426
W Battaglia Rd	2,498

### Matt Harper, CCIM

602 393 6604 • matt.harper@naihonorizon.com

2944 N 44th Street, Suite 200  
Phoenix, AZ 85018  
602 955 4000  
naihonorizon.com



## Parcel Area



**Matt Harper, CCIM**

602 393 6604 • [matt.harper@naihorizon.com](mailto:matt.harper@naihorizon.com)

All information furnished regarding property for sale, rental or financing is from sources deemed reliable, but no warranty or representation is made to the accuracy thereof and same is submitted subject to errors, omissions, change of price, rental or other conditions prior to sale, lease or financing or withdrawal without notice. No liability of any kind is to be imposed on the broker herein.

2944 N 44th Street, Suite 200

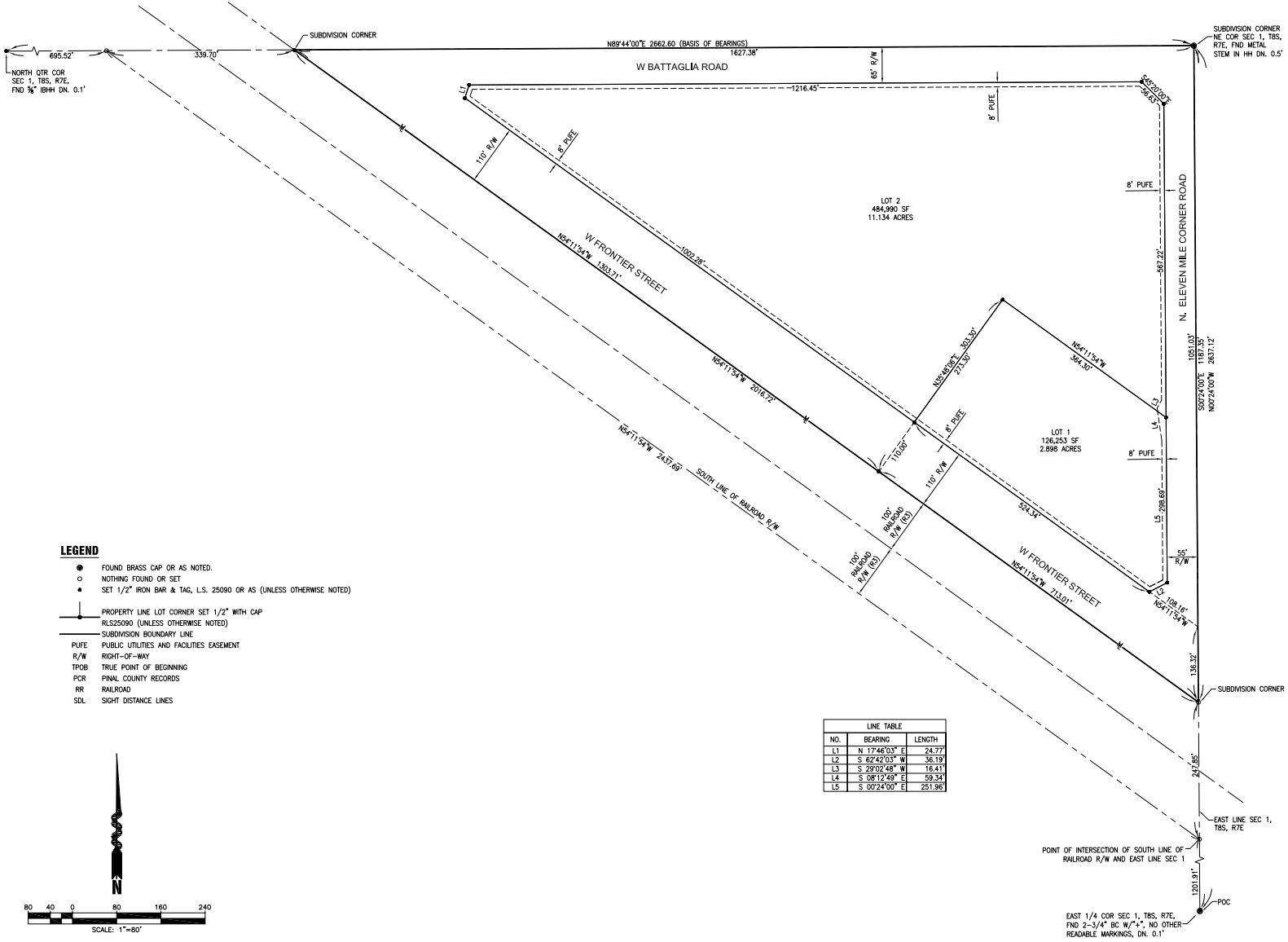
Phoenix, AZ 85018

602 955 4000

[naihorizon.com](http://naihorizon.com)

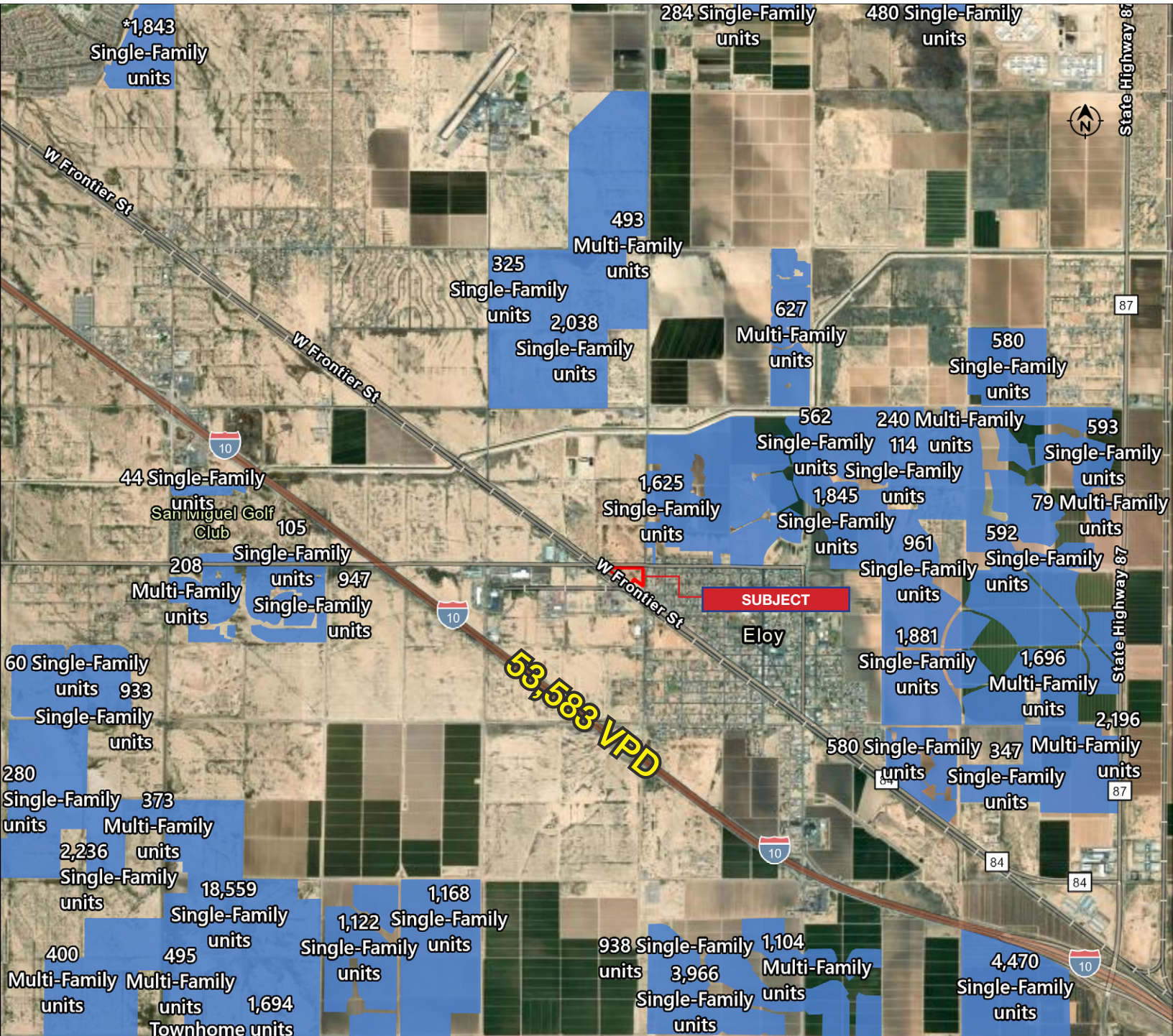


## Plat Map





## Aerial Map



24-04-109

**Matt Harper, CCIM**

602 393 6604 • matt.harper@naihonorizon.com

2944 N 44th Street, Suite 200  
Phoenix, AZ 85018  
602 955 4000

naihonorizon.com

All information furnished regarding property for sale, rental or financing is from sources deemed reliable, but no warranty or representation is made to the accuracy thereof and same is submitted subject to errors, omissions, change of price, rental or other conditions prior to sale, lease or financing or withdrawal without notice. No liability of any kind is to be imposed on the broker herein.