



**For Sale**

## Industrial Building with Yard

**10123 SE Brittany Ct.  
Clackamas, OR 97015**

### Overview

Size (SF)	+/- 10,784 SF
Lot (AC)	+/- 1.18 AC
Warehouse	+/- 6,832 SF
Office	+/- 3,952 SF
Building Type	Warehouse
Year Built	1990 / 2022 Ren
Clear Height	16'
Asking Price:	\$3,250,000

### Features

- Two attached buildings on 1.18 AC property
- ~0.25 AC improved yard area
- Fenced Site
- Cul-de-sac location
- Can be delivered vacant or with a new lease

### For more information:



**Sean Heaton**

503.320.1961 mobile  
sheaton@cresa.com



**Sean Connors**

503.886.8689 mobile  
sconnors@cresa.com



**Isaiah Johnson**

503.347.1526 mobile  
ijohnson@cresa.com

### Cresa

1355 NW Everett St, Suite 100  
Portland, OR 97209

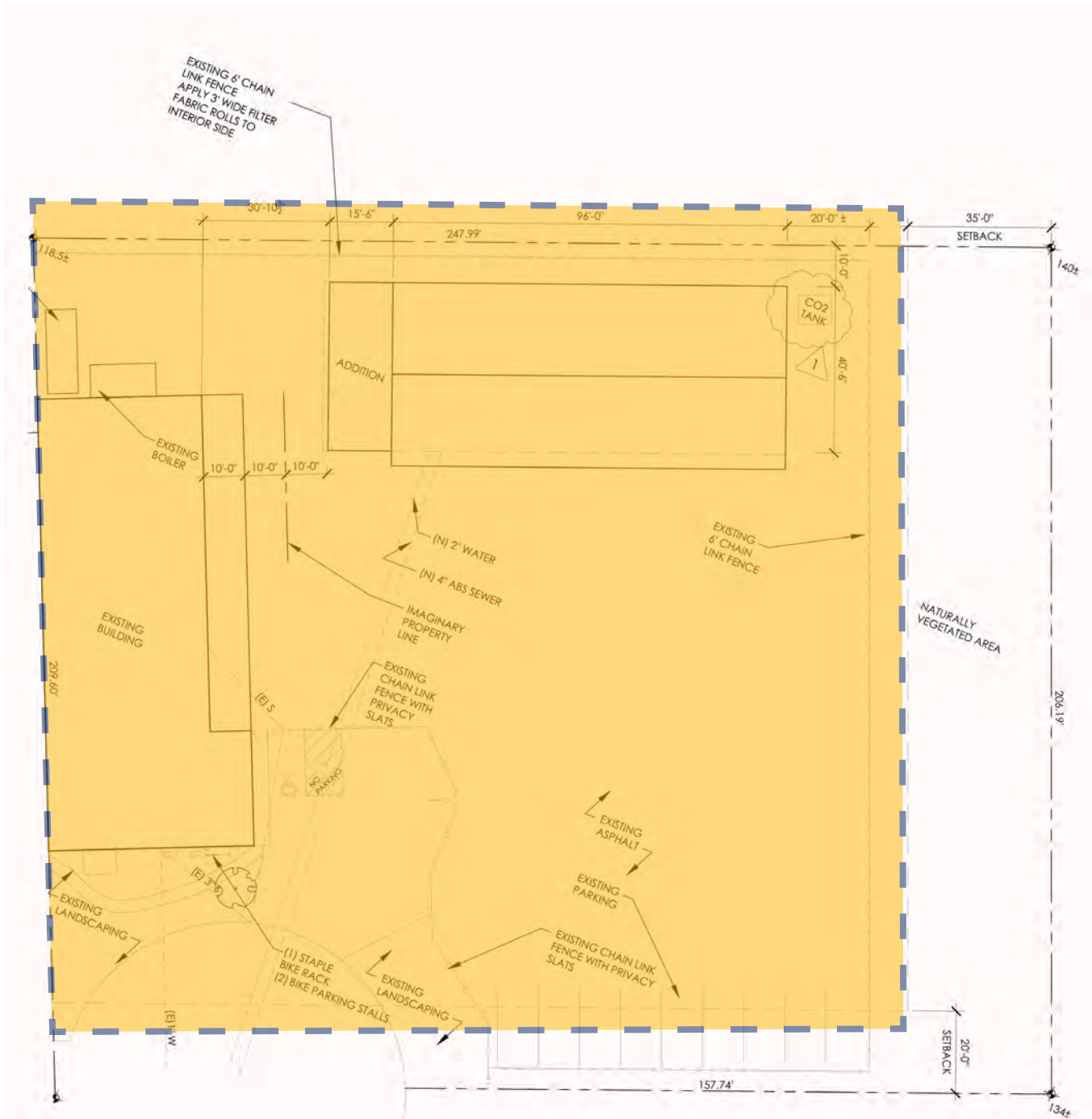
For Sale

cresa

# Industrial Building with Yard

10123 SE Brittany Ct, Clackamas, OR 97015

## Site Plan





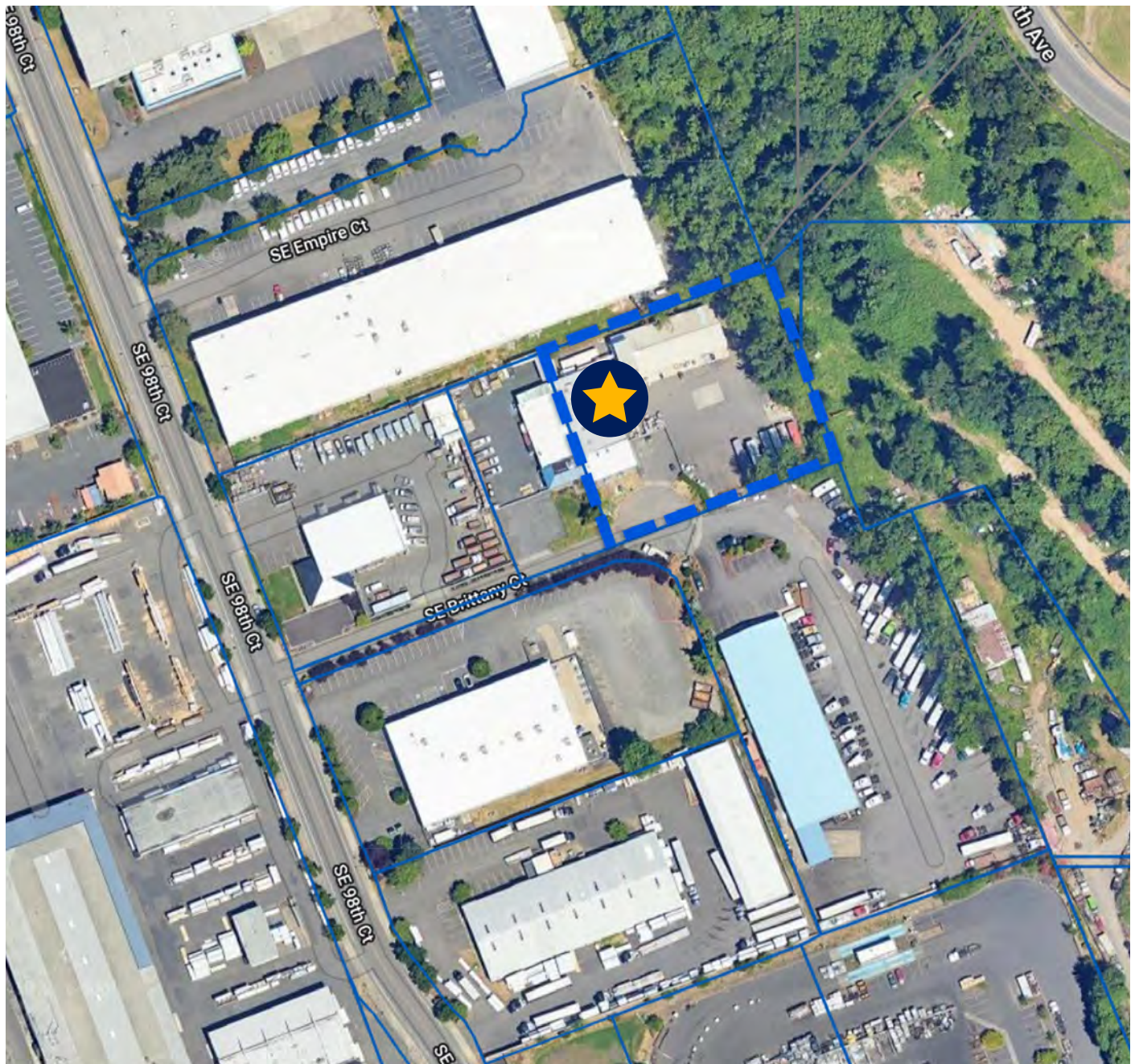
For Sale

cresa

# Industrial Building with Yard

10123 SE Brittany Ct, Clackamas, OR 97015

Lot/Zoning





For Sale

cresa

# Industrial Building with Yard

10123 SE Brittany Ct, Clackamas, OR 97015





For Sale

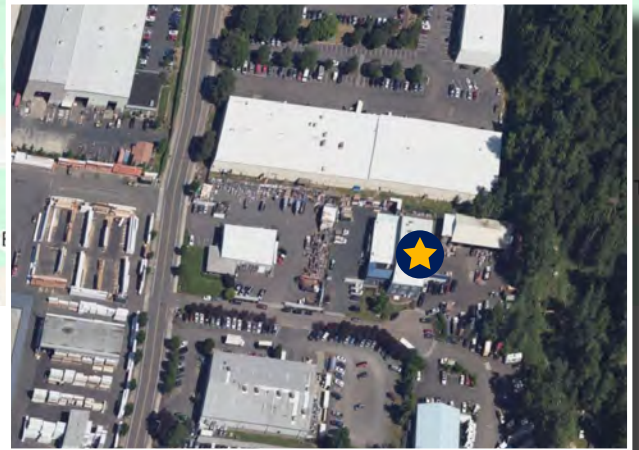
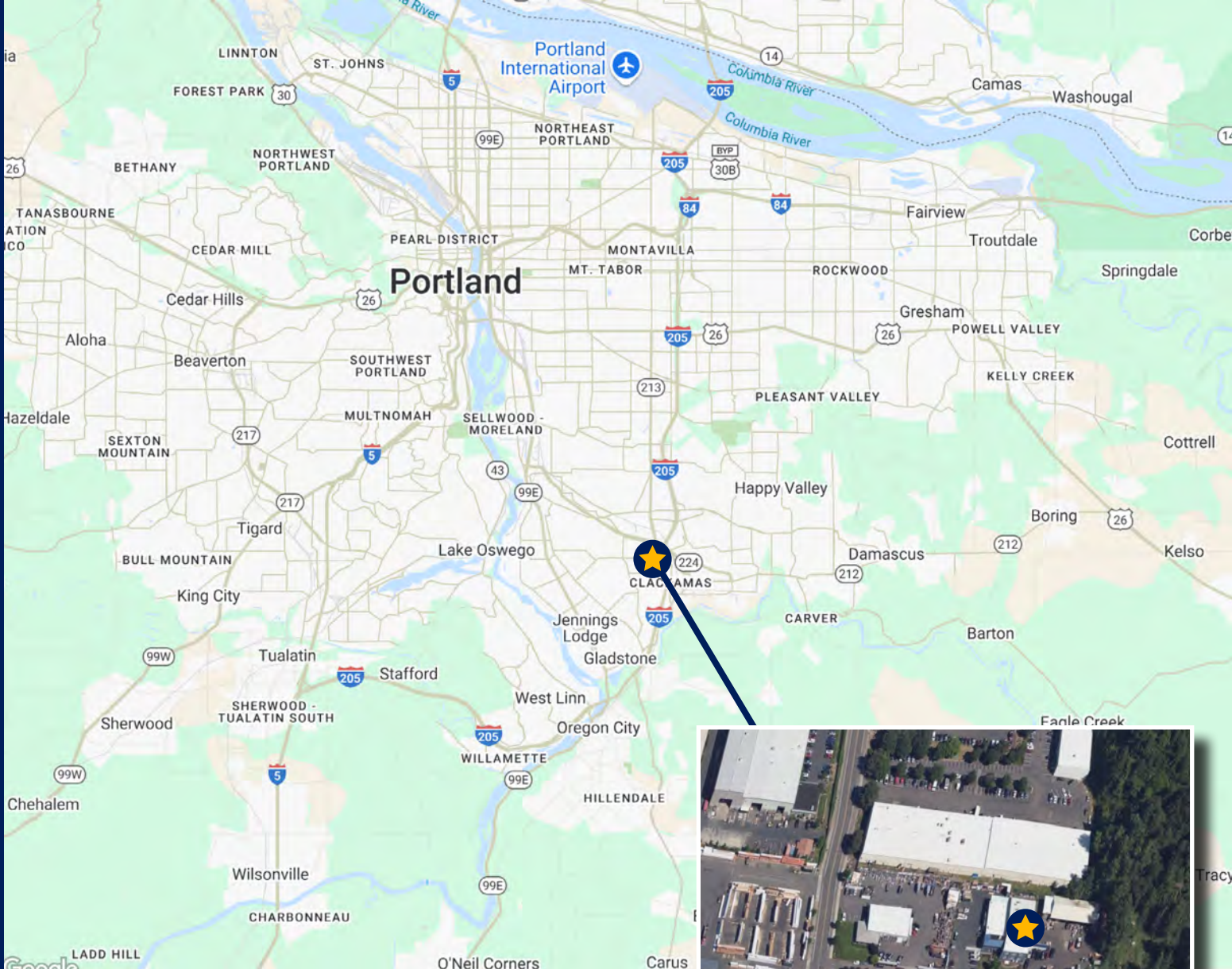
cresa

# Industrial Building with Yard

10123 SE Brittany Ct, Clackamas, OR 97015







**For Sale**

## Industrial Building with Yard

**10123 SE Brittany Ct.  
Clackamas, OR 97015**

**For more information:**



**Sean Heaton**  
503.320.1961 mobile  
sheaton@cresa.com



**Sean Connors**  
503.886.8689 mobile  
sconnors@cresa.com



**Isaiah Johnson**  
503.347.1526 mobile  
ijohnson@cresa.com

*The information contained herein has been obtained from sources believed to be reliable. However, Cresa and its agents make no representation or warranty as to the accuracy or completeness of the information. All information is subject to verification by the recipient and is subject to change without notice.*

**Cresa | 1355 NW Everett St, Suite 100 | Portland, OR 97209**