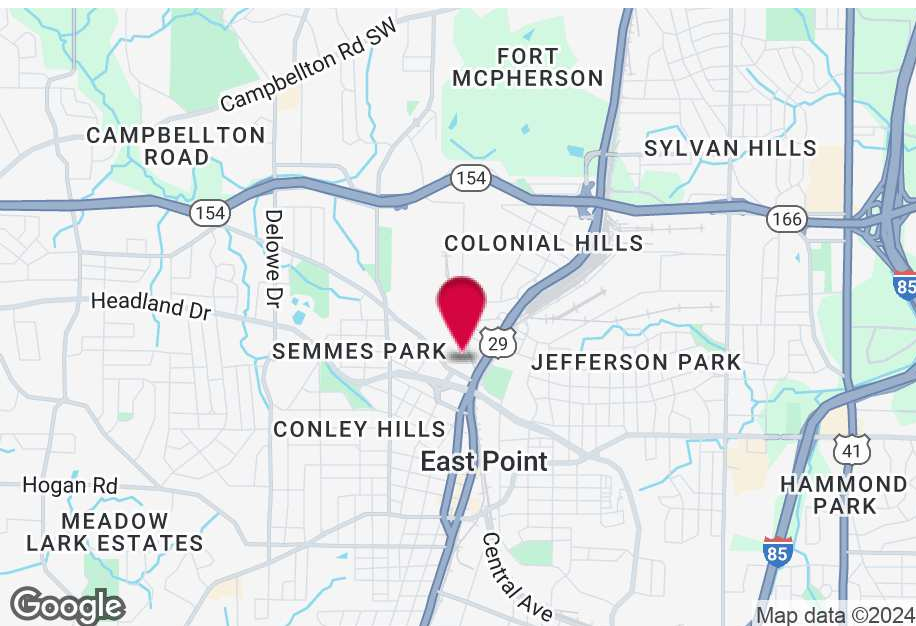


FOR LEASE

1607 CONNALLY DRIVE

East Point, GA 30344

2,430+/- SF SERVICE BUILDING WITH OUTSIDE STORAGE



PROPERTY HIGHLIGHTS

- Service Building
- 500+/- SF Office Space
- (5) 12' Grade Level Drive-in Doors
- LED Lighting in Shop
- 0.33+/- Fenced Outside Storage

BUILDING SUMMARY

Building Size	2,430 SF
Zoning	I1

Brian Bratton, SIOR
Senior Vice President
bbratton@kingindustrial.com
404.942.2028

Steve Ratchford, SIOR, CCIM
Senior Vice President
sratchford@kingindustrial.com
404.942.2003



Industrial • Commercial • Investment

ADDITIONAL PHOTOS



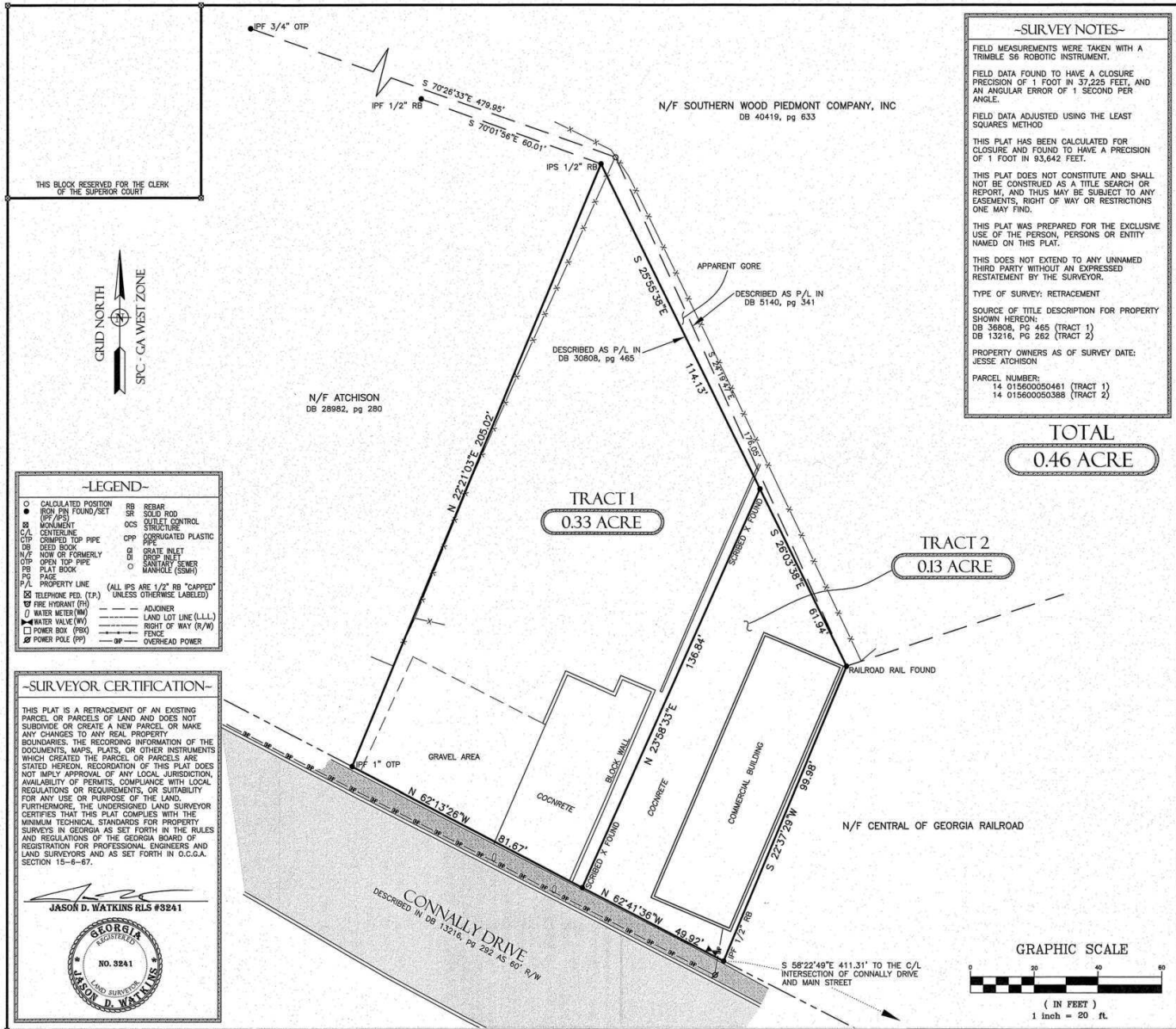
Brian Bratton, SIOR
Senior Vice President
bbratton@kingindustrial.com
404.942.2028

Steve Ratchford, SIOR, CCIM
Senior Vice President
sratchford@kingindustrial.com
404.942.2003

King Industrial
Realty, Inc. **CORFAC**
INTERNATIONAL

Industrial • Commercial • Investment

SURVEY



-SURVEY NOTES-

FIELD MEASUREMENTS WERE TAKEN WITH A TRIMBLE S6 ROBOTIC INSTRUMENT.

FIELD DATA FOUND TO HAVE A CLOSURE PRECISION OF 1 FOOT IN 37,225 FEET, AND AN ANGULAR ERROR OF 1 SECOND PER ANGLE.

FIELD DATA ADJUSTED USING THE LEAST SQUARES METHOD

THIS PLAT HAS BEEN CALCULATED FOR CLOSURE AND FOUND TO HAVE A PRECISION OF 1 FOOT IN 93,642 FEET.

THIS PLAT DOES NOT CONSTITUTE AND SHALL NOT BE CONSTRUED AS A TITLE SEARCH OR REPORT, AND THIS MAY BE SUBJECT TO ANY EASEMENTS, RIGHT OF WAY OR RESTRICTIONS ONE MAY FIND.

THIS PLAT WAS PREPARED FOR THE EXCLUSIVE USE OF THE PERSON, PERSONS OR ENTITY NAMED ON THIS PLAT.

THIS DOES NOT EXTEND TO ANY UNNAMED THIRD PARTY WITHOUT AN EXPRESSED RESTAINTMENT BY THE SURVEYOR.

TYPE OF SURVEY: RETRACEMENT

SOURCE OF TITLE DESCRIPTION FOR PROPERTY SHOWN HEREON:
DB 36908, PG 465 (TRACT 1)
DB 13216, PG 282 (TRACT 2)

PROPERTY OWNERS AS OF SURVEY DATE:
JESSE ATCHISON

PARCEL NUMBERS:
14 015600050461 (TRACT 1)
14 015600050388 (TRACT 2)

TOTAL
0.46 ACRE

PREPARED BY
DES DAVIS
ENGINEERING & SURVEYING
133 PROMINENCE COURT
SUITE 210
DAWSONVILLE, GA 30534
PHONE: (706) 265-1234
DAVISENGINEERS.COM

SURVEY FOR:
STEVE RATCHFORD
LAND LOT 156
14th DISTRICT
FULTON COUNTY, GEORGIA

DRAWN BY: JW/DS
FIELD CREW: JCM/JG
PLAT DATE: 3/13/2020
FIELD DATE: 3/9/2020

SHEET NO.
1 of 1

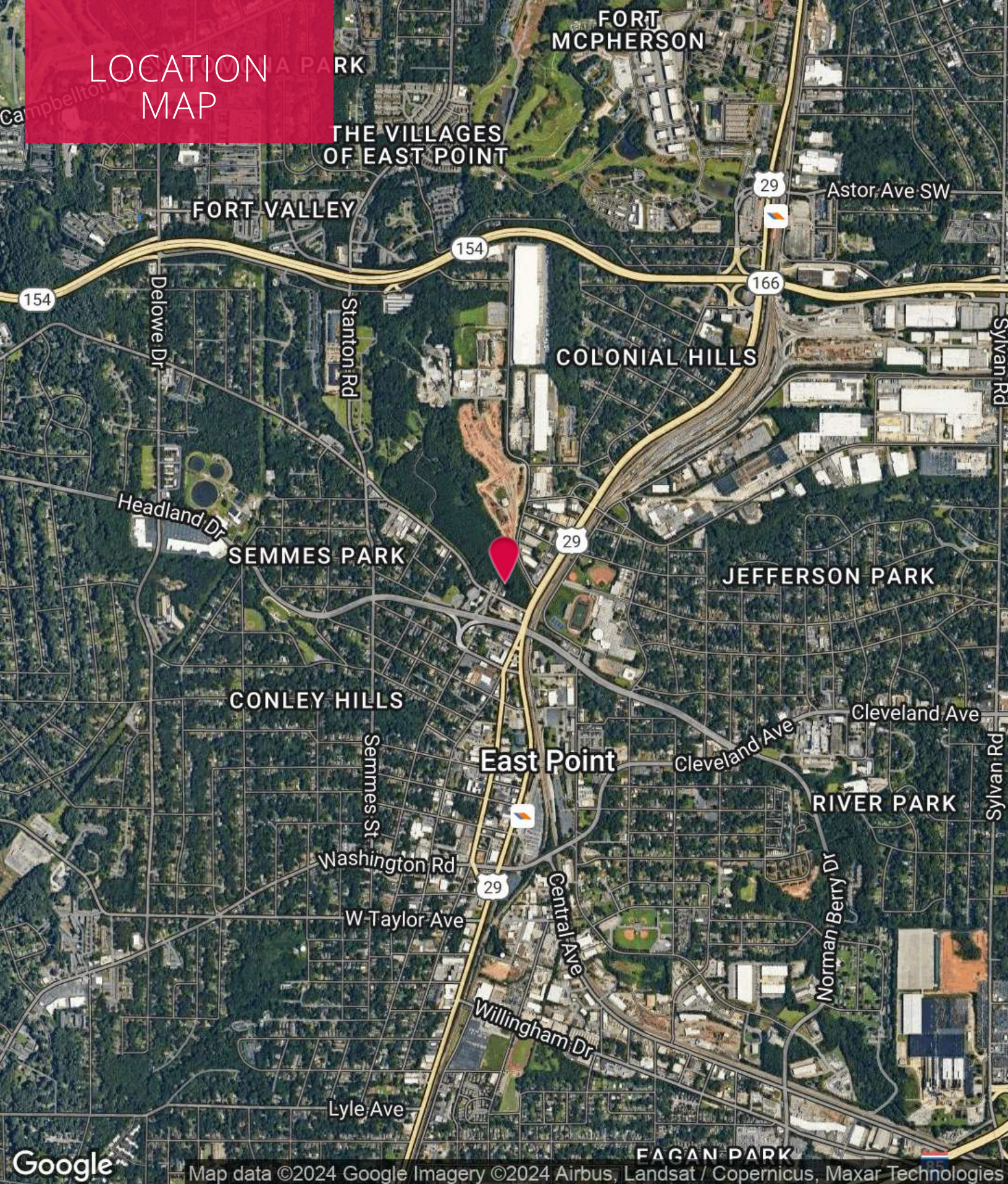
PROJECT NO.
20-058

Brian Bratton, SIOR
Senior Vice President
bbratton@kingindustrial.com
404.942.2028

Steve Ratchford, SIOR, CCIM
Senior Vice President
sratchford@kingindustrial.com
404.942.2003

King Industrial Realty, Inc.
CORFAC INTERNATIONAL
Industrial • Commercial • Investment

LOCATION MAP



Google

Map data ©2024 Google Imagery ©2024 Airbus, Landsat / Copernicus, Maxar Technologies

Brian Bratton, SIOR
Senior Vice President
bbratton@kingindustrial.com
404.942.2028

Steve Ratchford, SIOR, CCIM
Senior Vice President
sratchford@kingindustrial.com
404.942.2003

King Industrial
Realty, Inc.

CORFAC
INTERNATIONAL

Industrial • Commercial • Investment

EXCLUSIVELY LISTED BY:

Brian Bratton, SIOR

Senior Vice President
bbratton@kingindustrial.com
404.942.2028

Steve Ratchford, SIOR, CCIM

Senior Vice President
sratchford@kingindustrial.com
404.942.2003

KING Industrial
Realty, Inc.

CORFAC
INTERNATIONAL

Industrial • Commercial • Investment