

Liberty Tree Medical

MEDICAL OFFICE SPACE FOR LEASE

140 COMMONWEALTH AVE
DANVERS, MA

Rent: \$25 SF



PROPERTY SUMMARY

140 COMMONWEALTH AVENUE | DANVERS, MA 01923



Property Summary

Available SF:	7,171
Building SF:	30,886
Lease Rate:	\$25 sf
Lot Size:	154,638 SF
Parking Ratio:	4.21/1000
Parking:	130
Year Built:	1980
Zoning:	Commercial III
Security:	Security Cameras
Management:	Professional

Property Overview

140 Commonwealth Ave Danvers MA | 30,886 Standalone Brick Building | 3.55 Acre lot | Parking for 130 Vehicles | Handicap Access | 2 Story | Elevator and Stairway | Video Surveillance | Lighted Parking Lot | HVAC Heating and Cooling | Sprinklers Throughout | Building is Professionally Managed

Location Overview

- Close proximity to major corridors Interstate I-95, Rte. 1 and Rte. 128
- Shadowed by Liberty Tree and North Shore shopping malls.
- Many nearby national and regional branded restaurants, banks and pharmacies.
- Located 18 miles from Logan Airport
- Located 4 miles from Beverly MBTA Commuter Rail

PROPERTY DESCRIPTION

140 COMMONWEALTH AVENUE | DANVERS, MA 01923

HERRICK
LUTTS



140 Commonwealth Ave Danvers is Liberty Tree Medical, a 30,886 sf standalone two-story New England style brick building located on a 3.55-acre lot. This professional well maintained building features on-site parking for 130 vehicles with two handicap accessible entrances at opposite ends of the building. The professional landscaping and exterior details of the building provide a first-class experience for both tenant and patient. Spacious corridors with both natural and LED lighting provide easy access and easy to find tenant locations. The second floor is accessible by elevator, or two stairways located at opposite ends of the building. The updated building has HVAC heating and cooling, updated video surveillance security systems and well-lighted parking lot. Liberty Tree Medical is top class medical office.

HERRICK LUTTS
5 Briscoe Street, Suite 2
Beverly, MA 01915

RICHARD VINCENT
Commercial Real Estate Broker
O: (978) 235-4795
C: (978) 235-4795
Rich@HerrickLutts.com

140 COMMONWEALTH AVENUE | DANVERS, MA 01923



Available Spaces

Space	Size	Term	Rate	Space Use	Condition	Available
109	367	5 Years	\$25.00 /sf/yr	Medical Office	Average	Now
109-B	592	5 Years	\$25.00 /sf/yr	Medical Office	Average	Now
110	2,228	5 Years	\$25.00 /sf/yr	Medical Office	Average	Now
203	1,314	5 Years	\$25.00 /sf/yr	Medical Office	Average	Now
208	2,670	5 Years	\$25.00 /sf/yr	Medical Office	Average	Now



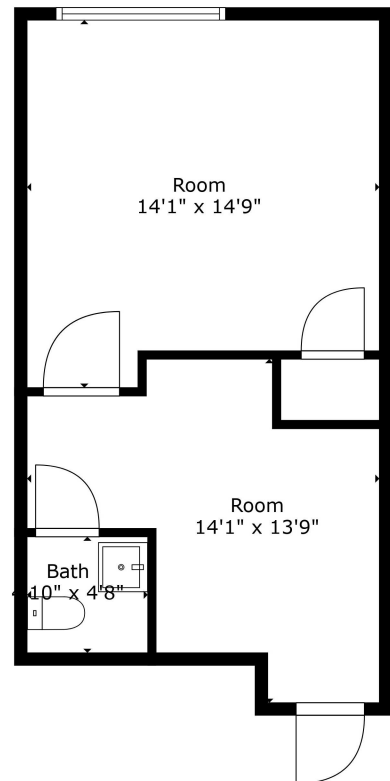
HERRICK LUTTS
5 Briscoe Street, Suite 2
Beverly, MA 01915

RICHARD VINCENT
Commercial Real Estate Broker
O: (978) 235-4795
C: (978) 235-4795
Rich@HerrickLutts.com

SUITE 109 - 367 SF

140 COMMONWEALTH AVENUE | DANVERS, MA 01923

HERRICK
LUTTS



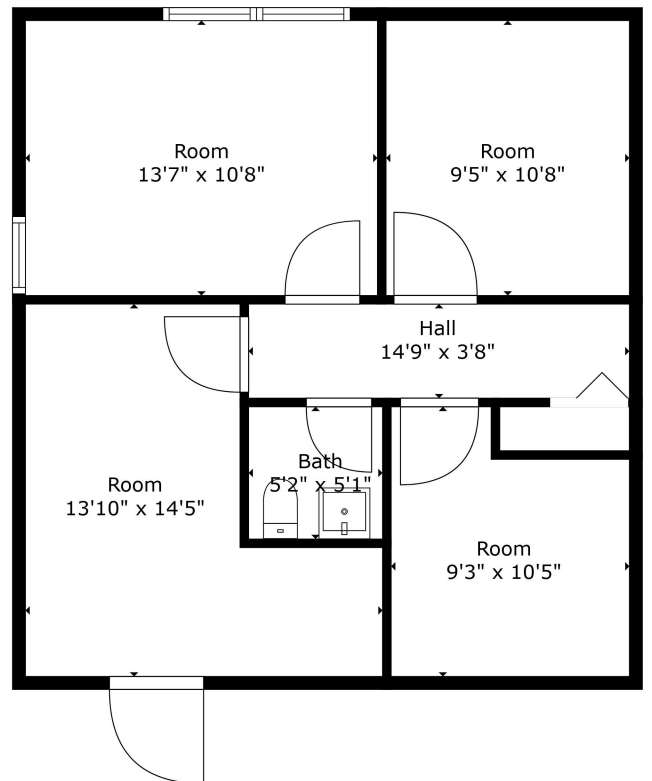
TOTAL: 367 sq. ft
FLOOR 1: 367 sq. ft

Sizes & Dimensions Are Approximate. Actual May Vary

SUITE 109-B 592 SF

140 COMMONWEALTH AVENUE | DANVERS, MA 01923

HERRICK
LUTTS



TOTAL: 592 sq. ft
FLOOR 1: 592 sq. ft

Sizes & Dimensions Are Approximate. Actual May Vary

SUITE 110 - 2228 SF

140 COMMONWEALTH AVENUE | DANVERS, MA 01923

HERRICK
LUTTS



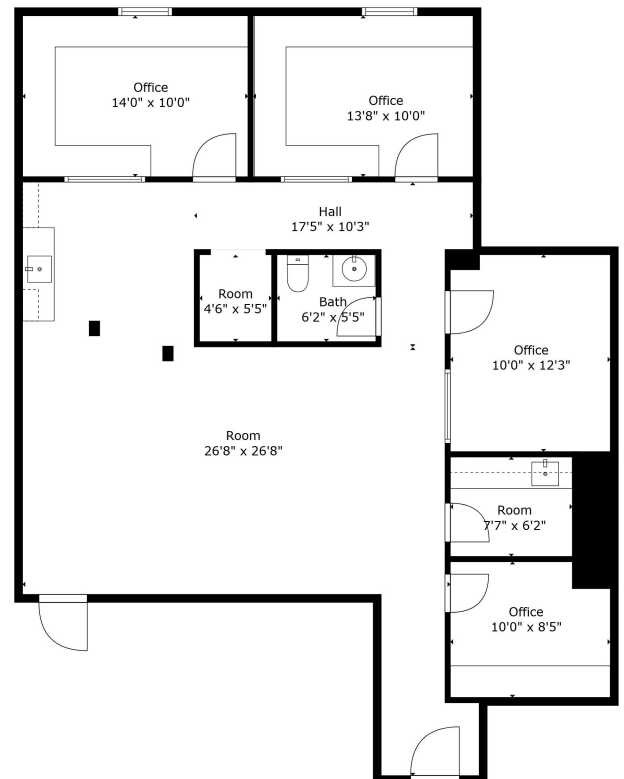
TOTAL: 2228 sq. ft.
FLOOR 1: 2228 sq. ft.

Sizes & Dimensions Are Approximate. Actual May Vary

SUITE 203 - 1314 SF

140 COMMONWEALTH AVENUE | DANVERS, MA 01923

HERRICK
LUTTS



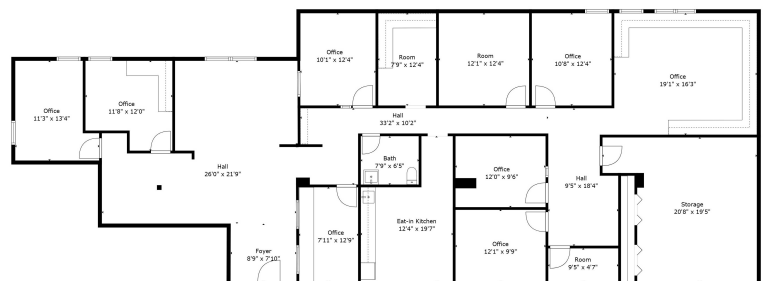
TOTAL: 1314 sq. ft
FLOOR 1: 1314 sq. ft

Sizes & Dimensions Are Approximate. Actual May Vary

SUITE 208 - 2670 SF

140 COMMONWEALTH AVENUE | DANVERS, MA 01923

HERRICK
LUTTS

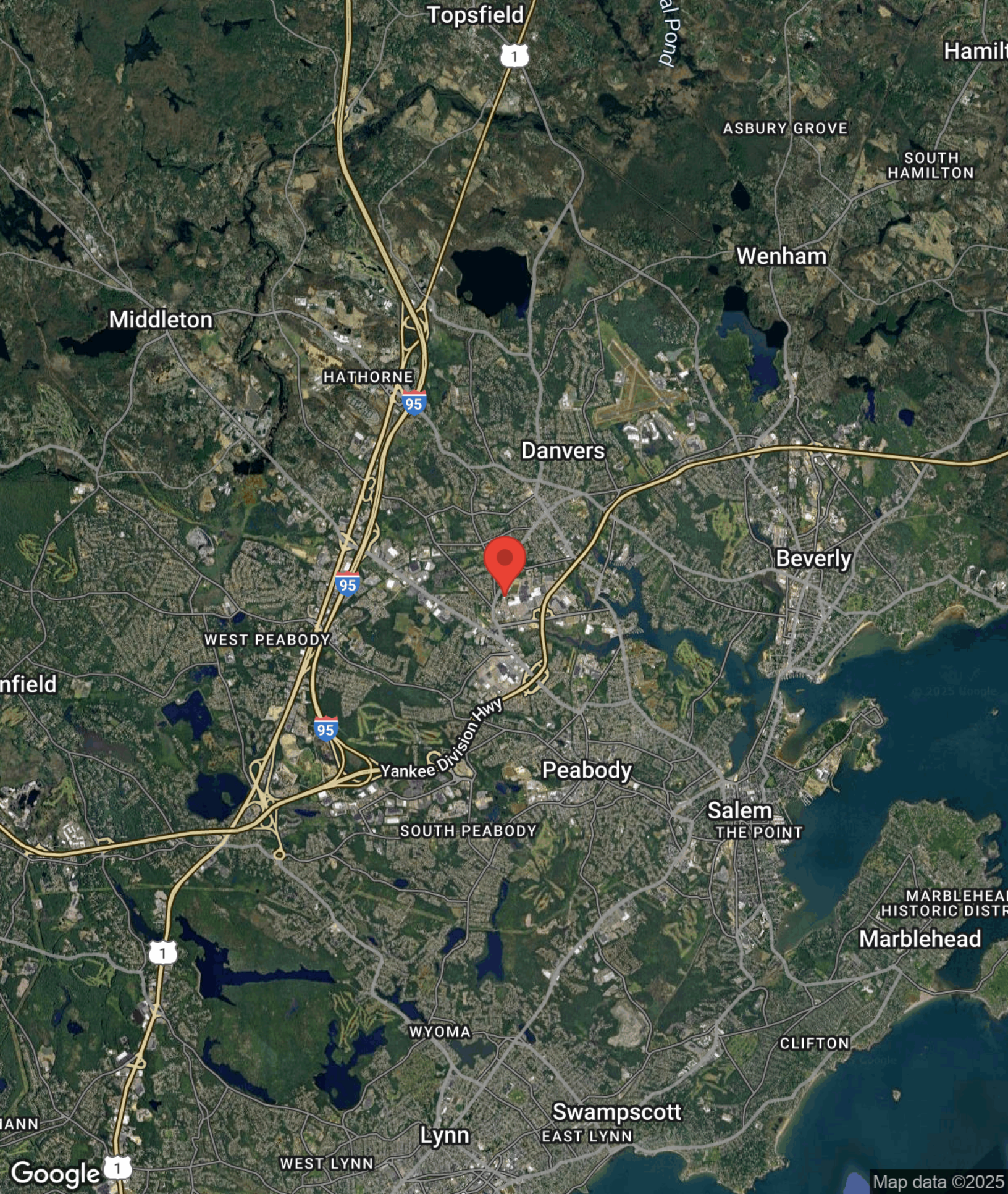


TOTAL: 2670 sq. ft.
FLOOR 1: 2670 sq. ft.
EXCLUDED AREAS: STORAGE: 333 sq. ft.
Sizes & Dimensions Are Approximate. Actual May Vary.

REGIONAL MAP

140 COMMONWEALTH AVENUE | DANVERS, MA 01923

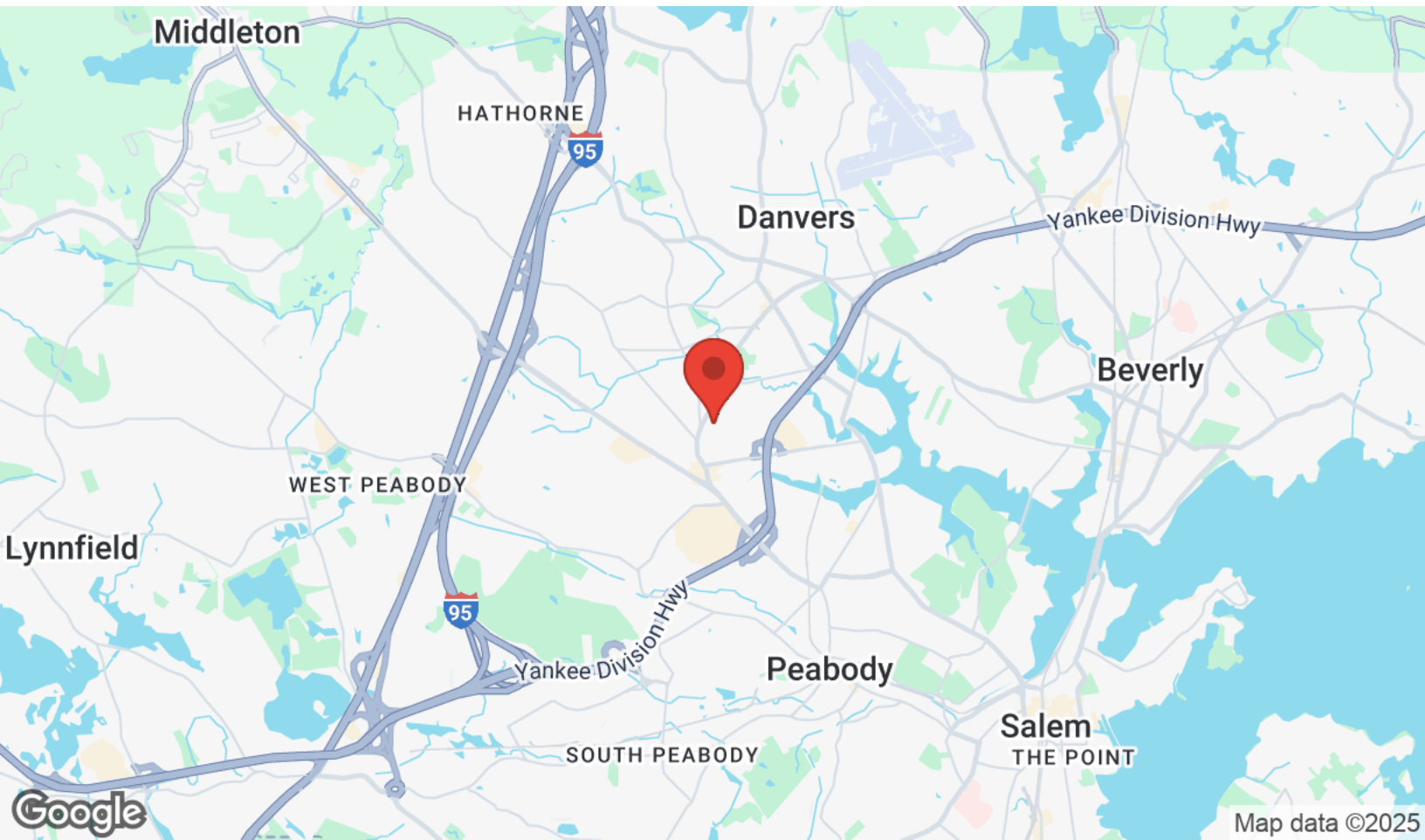
HERRICK
LUTTS



LOCATION MAPS

140 COMMONWEALTH AVENUE | DANVERS, MA 01923

HERRICK
LUTTS



AERIAL MAP

140 COMMONWEALTH AVENUE | DANVERS, MA 01923

HERRICK
LUTTS



BUSINESS MAP

140 COMMONWEALTH AVENUE | DANVERS, MA 01923

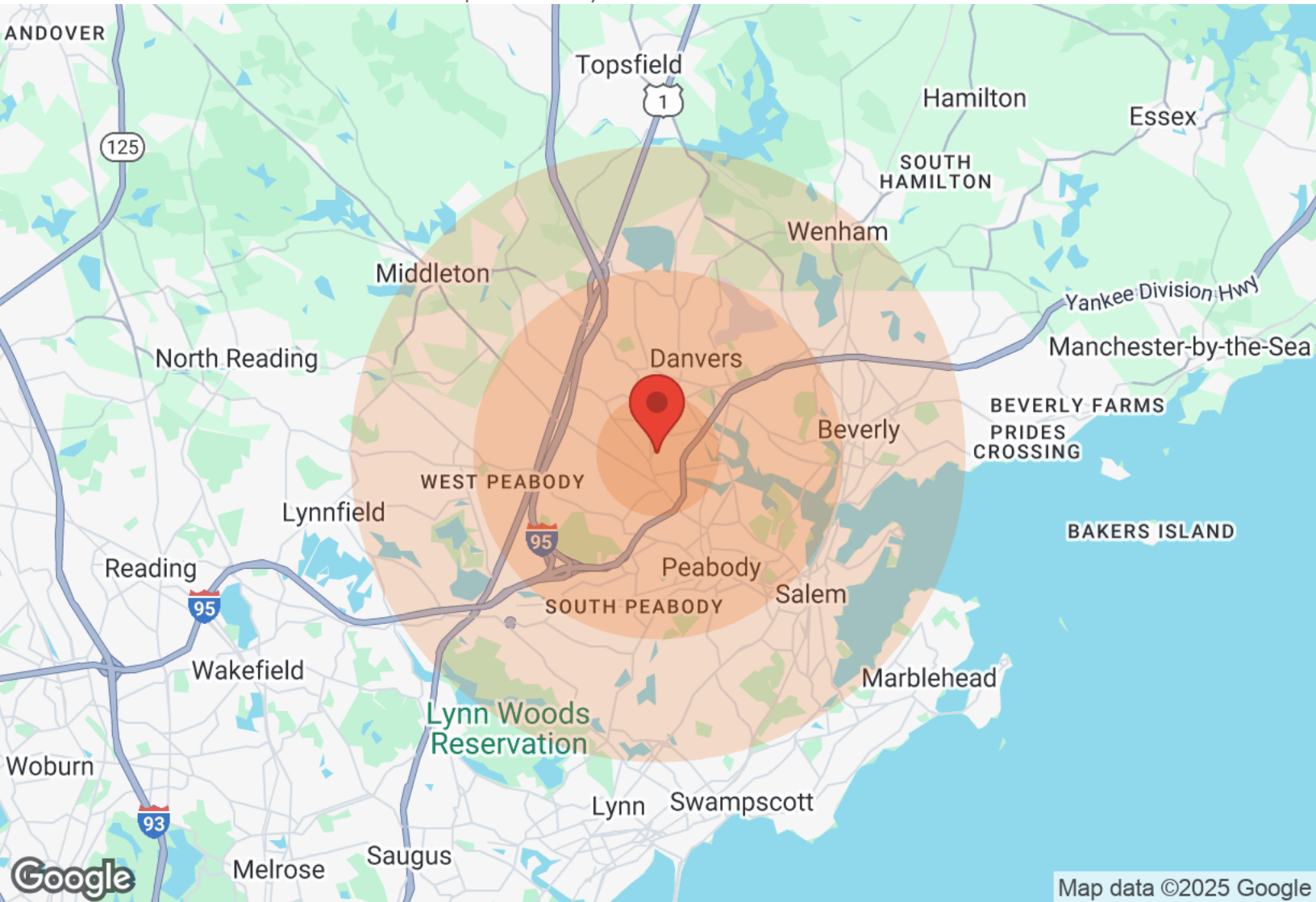
HERRICK
LUTTS



DEMOGRAPHICS

140 COMMONWEALTH AVENUE | DANVERS, MA 01923

HERRICK
LUTTS



Population	1 Mile	3 Miles	5 Miles
Male	3,108	40,144	90,250
Female	3,387	43,195	96,600
Total Population	6,495	83,339	186,850
Age	1 Mile	3 Miles	5 Miles
Ages 0-14	966	12,796	28,870
Ages 15-24	707	9,559	21,579
Ages 25-54	2,599	32,083	72,775
Ages 55-64	882	11,698	26,283
Ages 65+	1,341	17,203	37,343
Race	1 Mile	3 Miles	5 Miles
White	5,982	78,034	171,685
Black	212	1,061	3,532
Am In/AK Nat	N/A	28	105
Hawaiian	N/A	N/A	N/A
Hispanic	232	4,183	13,007
Multi-Racial	404	6,942	19,250

Income	1 Mile	3 Miles	5 Miles
Median	\$65,515	\$65,920	\$67,522
< \$15,000	307	3,716	8,176
\$15,000-\$24,999	277	2,975	5,979
\$25,000-\$34,999	213	2,857	6,260
\$35,000-\$49,999	200	3,930	8,148
\$50,000-\$74,999	665	7,159	14,125
\$75,000-\$99,999	352	4,654	10,745
\$100,000-\$149,999	528	6,034	13,511
\$150,000-\$199,999	189	2,419	5,542
> \$200,000	145	1,355	4,132

Housing	1 Mile	3 Miles	5 Miles
Total Units	3,048	37,305	81,862
Occupied	2,917	35,447	77,818
Owner Occupied	1,573	22,080	50,380
Renter Occupied	1,344	13,367	27,438
Vacant	131	1,858	4,044

HERRICK LUTTS
5 Briscoe Street, Suite 2
Beverly, MA 01915

RICHARD VINCENT
Commercial Real Estate Broker
O: (978) 235-4795
C: (978) 235-4795
Rich@HerrickLutts.com

PROFESSIONAL BIO

140 COMMONWEALTH AVENUE | DANVERS, MA 01923

HERRICK
■ LUTTS

RICHARD VINCENT

Commercial Real Estate Broker



Herrick Lutts
5 Briscoe Street, Suite 2
Beverly, MA 01915
O: (978) 235-4795
C: (978) 235-4795
Rich@HerrickLutts.com

DISCLAIMER

140 COMMONWEALTH AVENUE

All materials and information received or derived from Herrick Lutts its directors, officers, agents, advisors, affiliates and/or any third party sources are provided without representation or warranty as to completeness, veracity, or accuracy, condition of the property, compliance or lack of compliance with applicable governmental requirements, developability or suitability, financial performance of the property, projected financial performance of the property for any party's intended use or any and all other matters.

Neither Herrick Lutts its directors, officers, agents, advisors, or affiliates makes any representation or warranty, express or implied, as to accuracy or completeness of the materials or information provided, derived, or received. Materials and information from any source, whether written or verbal, that may be furnished for review are not a substitute for a party's active conduct of its own due diligence to determine these and other matters of significance to such party. Herrick Lutts will not investigate or verify any such matters or conduct due diligence for a party unless otherwise agreed in writing.

EACH PARTY SHALL CONDUCT ITS OWN INDEPENDENT INVESTIGATION AND DUE DILIGENCE.

Any party contemplating or under contract or in escrow for a transaction is urged to verify all information and to conduct their own inspections and investigations including through appropriate third-party independent professionals selected by such party. All financial data should be verified by the party including by obtaining and reading applicable documents and reports and consulting appropriate independent professionals. Herrick Lutts makes no warranties and/or representations regarding the veracity, completeness, or relevance of any financial data or assumptions. Herrick Lutts does not serve as a financial advisor to any party regarding any proposed transaction.

All data and assumptions regarding financial performance, including that used for financial modeling purposes, may differ from actual data or performance. Any estimates of market rents and/or projected rents that may be provided to a party do not necessarily mean that rents can be established at or increased to that level. Parties must evaluate any applicable contractual and governmental limitations as well as market conditions, vacancy factors and other issues in order to determine rents from or for the property. Legal questions should be discussed by the party with an attorney. Tax questions should be discussed by the party with a certified public accountant or tax attorney. Title questions should be discussed by the party with a title officer or attorney. Questions regarding the condition of the property and whether the property complies with applicable governmental requirements should be discussed by the party with appropriate engineers, architects, contractors, other consultants, and governmental agencies. All properties and services are marketed by Herrick Lutts in compliance with all applicable fair housing and equal opportunity laws.

HERRICK LUTTS
5 Briscoe Street, Suite 2
Beverly, MA 01915

PRESENTED BY:

RICHARD VINCENT
Commercial Real Estate Broker
O: (978) 235-4795
C: (978) 235-4795
Rich@HerrickLutts.com

The calculations and data presented are deemed to be accurate, but not guaranteed. They are intended for the purpose of illustrative projections and analysis. The information provided is not intended to replace or serve as substitute for any legal, accounting, investment, real estate, tax or other professional advice, consultation or service. The user of this software should consult with a professional in the respective legal, accounting, tax or other professional area before making any decisions.