

792

MADISON AVENUE

THE SOUTHWEST CORNER OF MADISON AVENUE AND 67TH STREET

MADISON AVENUE FLAGSHIP FOR LEASE
THE MOST DRAMATIC TWO-LEVEL RETAIL
CORNER ON THE AVENUE!



PROPERTY DETAILS

PREMISES

Ground Floor: 2,200 square feet
Second Floor: 2,000 square feet
Basement: 1,500 square feet

FRONTAGE

50 Feet on Madison Avenue

POSSESSION

April 2025

CEILINGS

12 Feet

TENANT

Presently Michael Kors Collections

ASKING RENT

\$1.85 Million Per Annum

LEASE TERM

Up To 15 Years

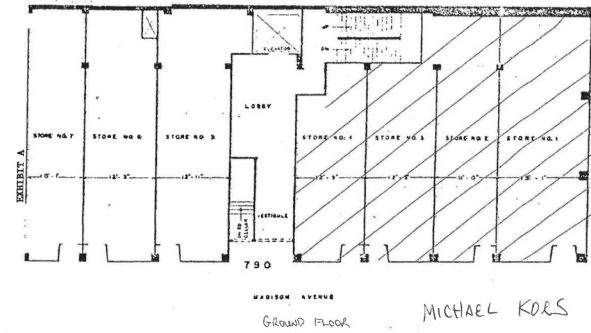
FEATURES

- Double-Height Glass Façade
- Situated among the most Prestigious Retailers on Madison Avenue
- The most dramatic two-level corner available
- Long Lease Possible
- Excellent condition due to Kors renovations

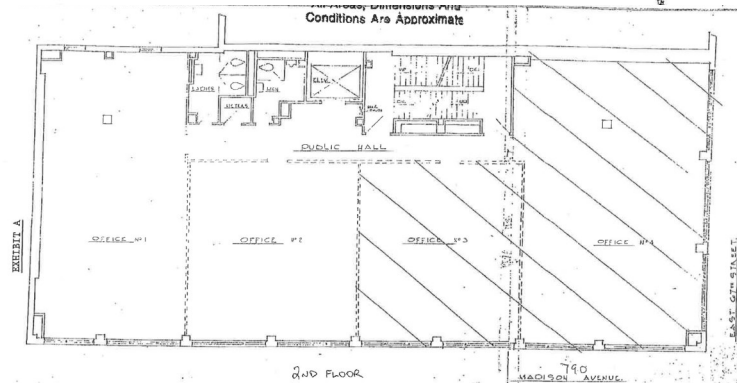
792 MADISON AVENUE

SOUTHWEST CORNER OF 67TH STREET

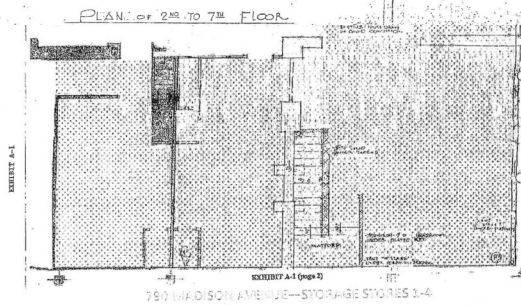
AN. OF STORES Conditions Are Approximate



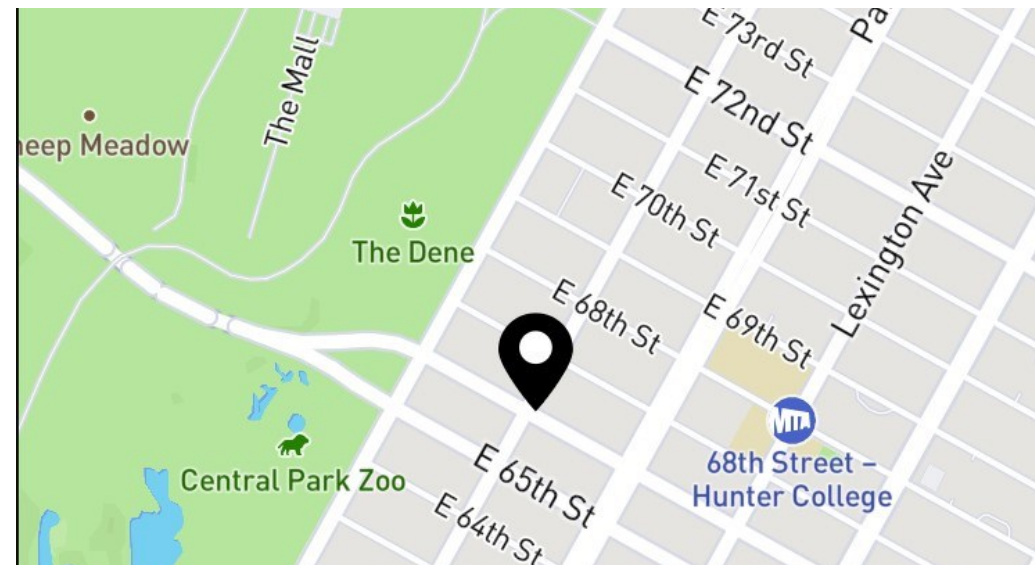
Ground Floor



2nd Floor



Basement



THE DANA COMMERCIAL TEAM
AT DOUGLAS ELLIMAN REAL ESTATE

GARY DANA 212.692.6183 CELL: 516.946.7207
 RICK DANA 212.692.6182 CELL: 917.952.0624

gdana@elliman.com
rdana@elliman.com



THE DANA COMMERCIAL TEAM
Douglas Elliman EST. 1911
 REAL ESTATE

© 2017 DOUGLAS ELLIMAN REAL ESTATE. ALL MATERIAL PRESENTED HEREIN IS INTENDED FOR INFORMATION PURPOSES ONLY. WHILE THIS INFORMATION IS BELIEVED TO BE CORRECT, IT IS REPRESENTED SUBJECT TO ERRORS, OMISSIONS, CHANGES OR WITHDRAWAL WITHOUT NOTICE. ALL PROPERTY INFORMATION, INCLUDING, BUT NOT LIMITED TO SQUARE FOOTAGE, ROOM COUNT, NUMBER OF BEDROOMS AND THE SCHOOL DISTRICT IN PROPERTY LISTINGS SHOULD BE VERIFIED BY YOUR OWN ATTORNEY, ARCHITECT OR ZONING EXPERT. IF YOUR PROPERTY IS CURRENTLY LISTED WITH ANOTHER REAL ESTATE BROKER, PLEASE DISREGARD THIS OFFER. IT IS NOT OUR INTENTION TO SOLICIT THE OFFERINGS OF OTHER REAL ESTATE BROKERS. WE COOPERATE WITH THEM FULLY. EQUAL HOUSING OPPORTUNITY.