

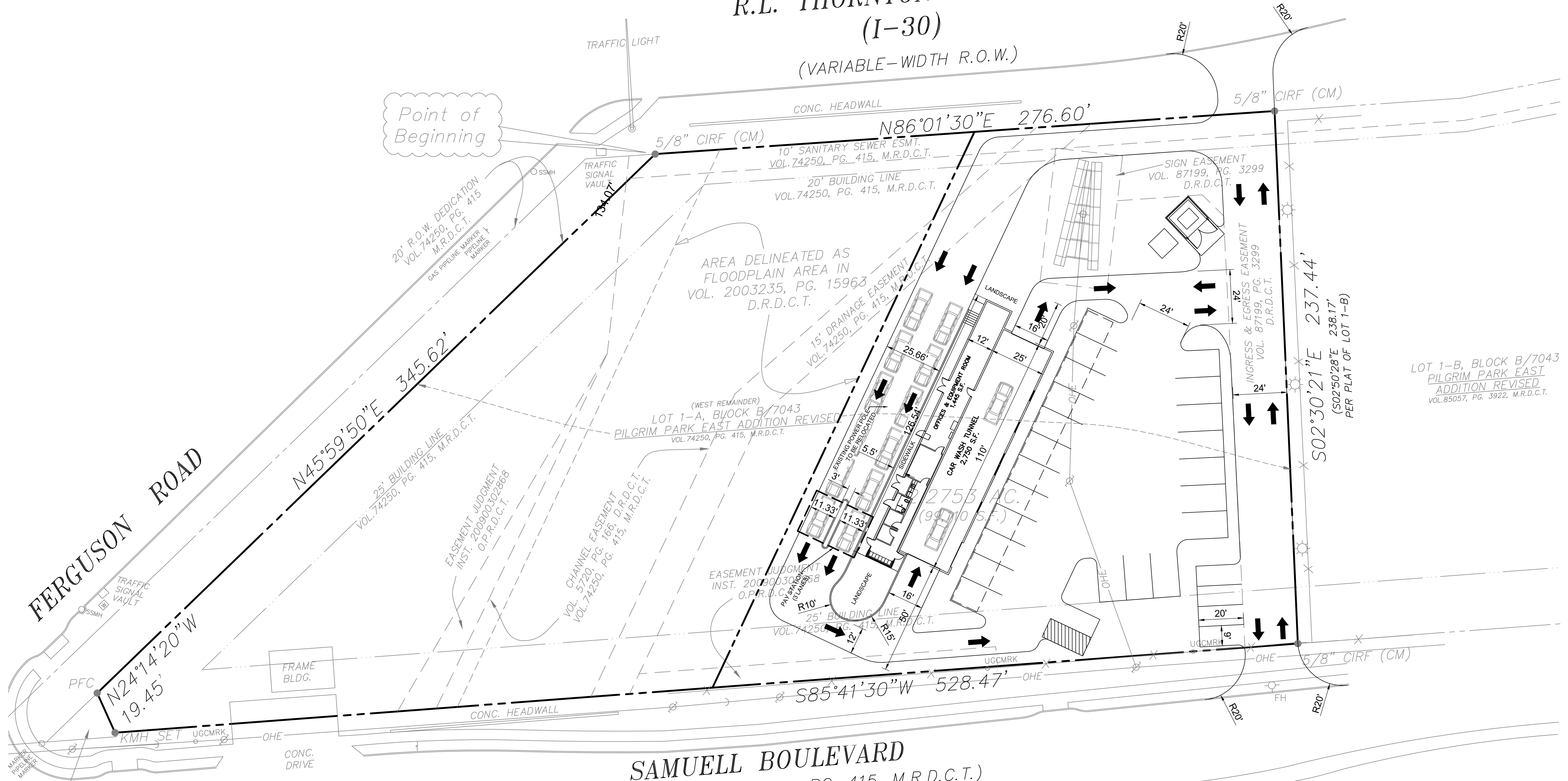
R.L. THORNTON FREEWAY (I-30)

(VARIABLE-WIDTH R.O.W.)

FERGUSON ROAD

SAMUELL BOULEVARD (108' R.O.W. - VOL. 74250, PG. 415, M.R.D.C.T.)

Point of Beginning



N. DEDICATION
JUDGMENT)
200900302868
O.P.R.D.C.T.

LOT 1-B, BLOCK B/7043
PILGRIM PARK EAST
ADDITION REVISED
VOL. 85057, PG. 3922, M.R.D.C.T.