

23594 HOOVER ROAD
WARREN, MICHIGAN

RETAIL/INDUSTRIAL FOR SALE
1,433 Square Feet Available



**SIGNATURE
ASSOCIATES**
KNOW SIGNATURE | KNOW RESULTS



PROPERTY FEATURES

- 1,433 square feet available
- Zoned M2
- Ample parking
- Fully operational and running restaurant
- Interior and exterior remodeled
- Separate 864 square foot out-building with extra parking lot
- Sale Price: \$450,000 (\$314.03/sq. ft.)



For more information, please contact:

CHRIS MONSOUR
(248) 948 0107
cmonsour@signatureassociates.com

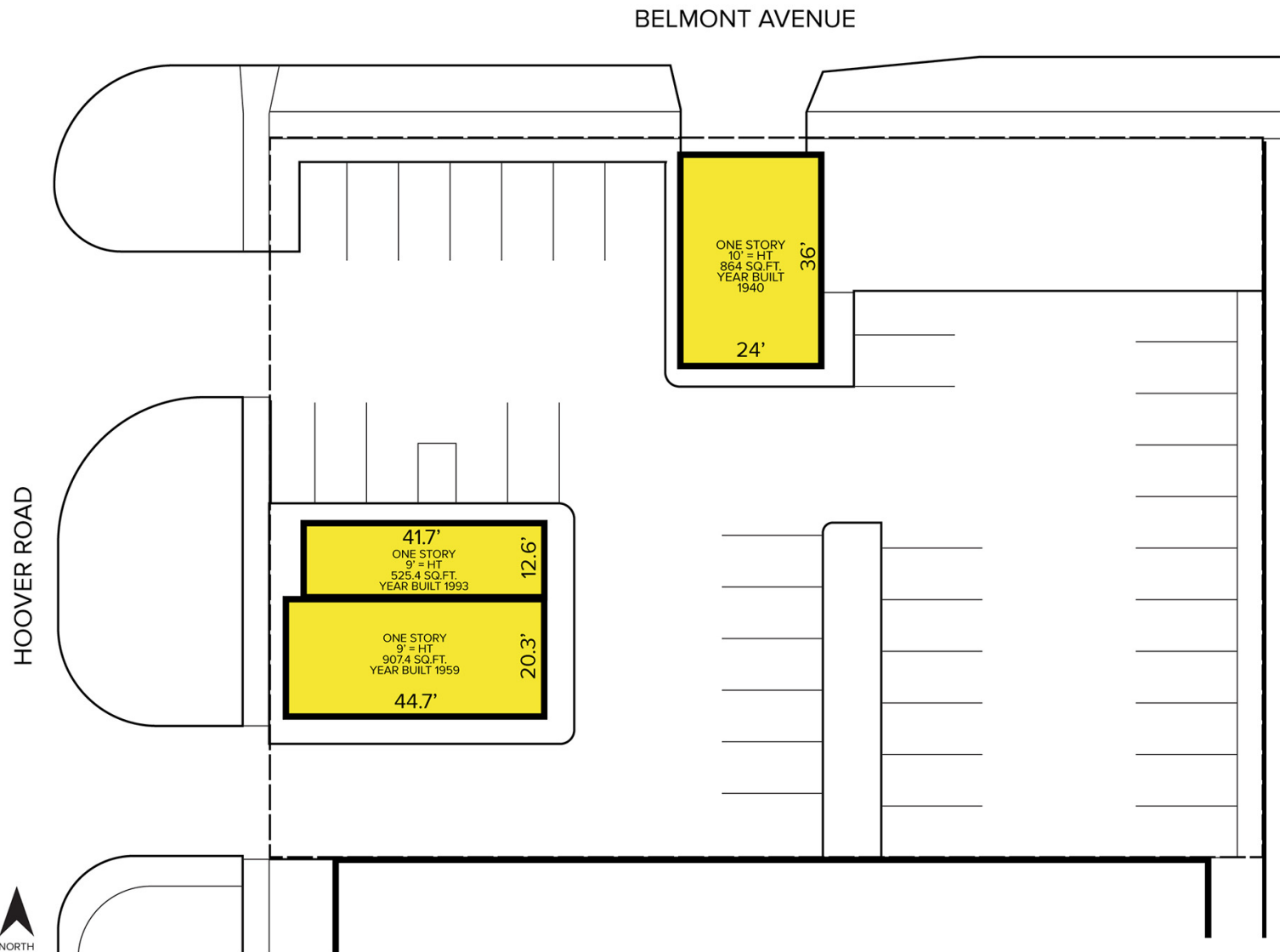
SIGNATURE ASSOCIATES
One Towne Square, Suite 1200
Southfield, MI 48076
www.signatureassociates.com

23594 Hoover Road – Warren, Michigan

Retail/Industrial For Sale

1,433
Square Feet
AVAILABLE

Site Plan



For more information, please contact:

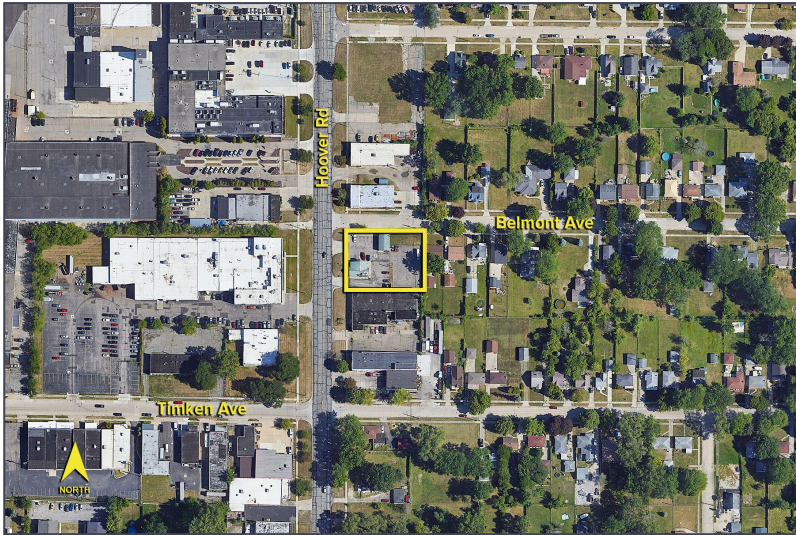
CHRIS MONSOUR
(248) 948 0107
cmonsour@signatureassociates.com

SIGNATURE ASSOCIATES
One Towne Square, Suite 1200
Southfield, MI 48076
www.signatureassociates.com

23594 Hoover Road – Warren, Michigan

Retail/Industrial For Sale

1,433
Square Feet
AVAILABLE

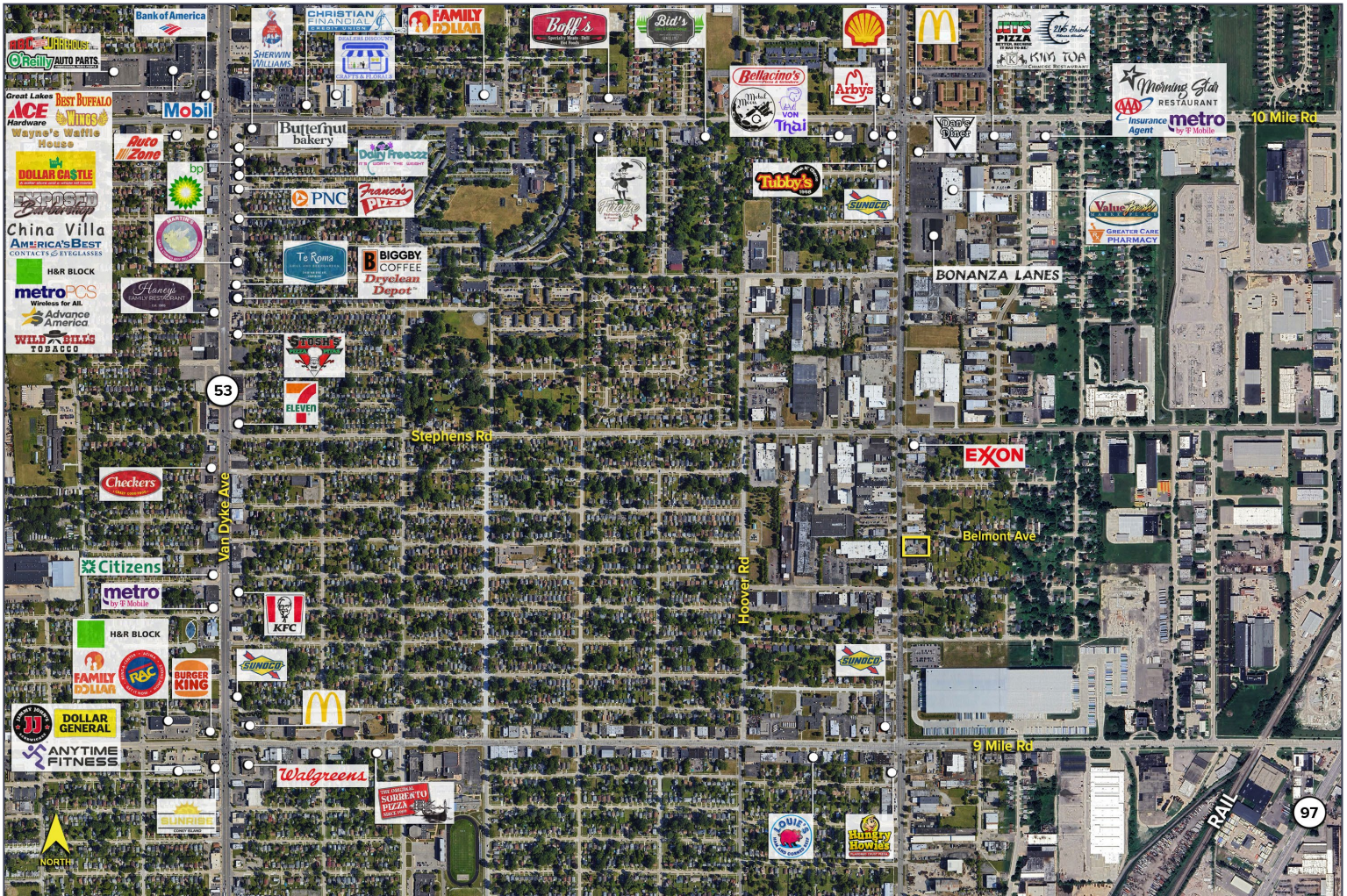


DEMOGRAPHICS

	POPULATION	MED. HH INCOME
1 MILE	11,426	\$43,452
3 MILE	129,696	\$53,020
5 MILE	366,228	\$54,344

TRAFFIC COUNTS (TWO-WAY)

18,259	Hoover Rd. S. of Stephens Rd.
19,699	Hoover Rd. N. of Stephens Rd.
3,581	Stephens Rd. E. of Hoover Rd.
3,740	Stephens Rd. W. of Hoover Rd.



For more information, please contact:

CHRIS MONSOUR
(248) 948 0107
cmonsour@signatureassociates.com

SIGNATURE ASSOCIATES
One Towne Square, Suite 1200
Southfield, MI 48076
www.signatureassociates.com