

# LEASE

**BUILD TO SUIT • 5,000± SF - 14,000± SF BUILDING**

**330 CORPORATE PARKWAY, MACON, BIBB COUNTY, GA 31210**



**LEASE RATE: TO BE DETERMINED**

### LOCATION OVERVIEW

- Subject property located in North Macon less than one mile from Interstate 75, Exit 171.
- Convenient to The Shoppes at River Crossing with many eateries and shopping
- 7 miles from Interstate 16
- 75 miles from Atlanta

### PROPERTY OVERVIEW

- Build To Suit - 5,000± SF - 14,000± SF
- 2.91± Acres
- Topo: Level
- All utilities available to the site.
- Zoned M-1, Light Industrial



# LEASE

**BUILD TO SUIT • 5,000± SF - 14,000± SF BUILDING**

**330 CORPORATE PARKWAY, MACON, BIBB COUNTY, GA 31210**

**BUILD TO SUIT - 5,000± SF - 14,000± SF**

**2.91± ACRES • ZONED M-1, LIGHT INDUSTRIAL**

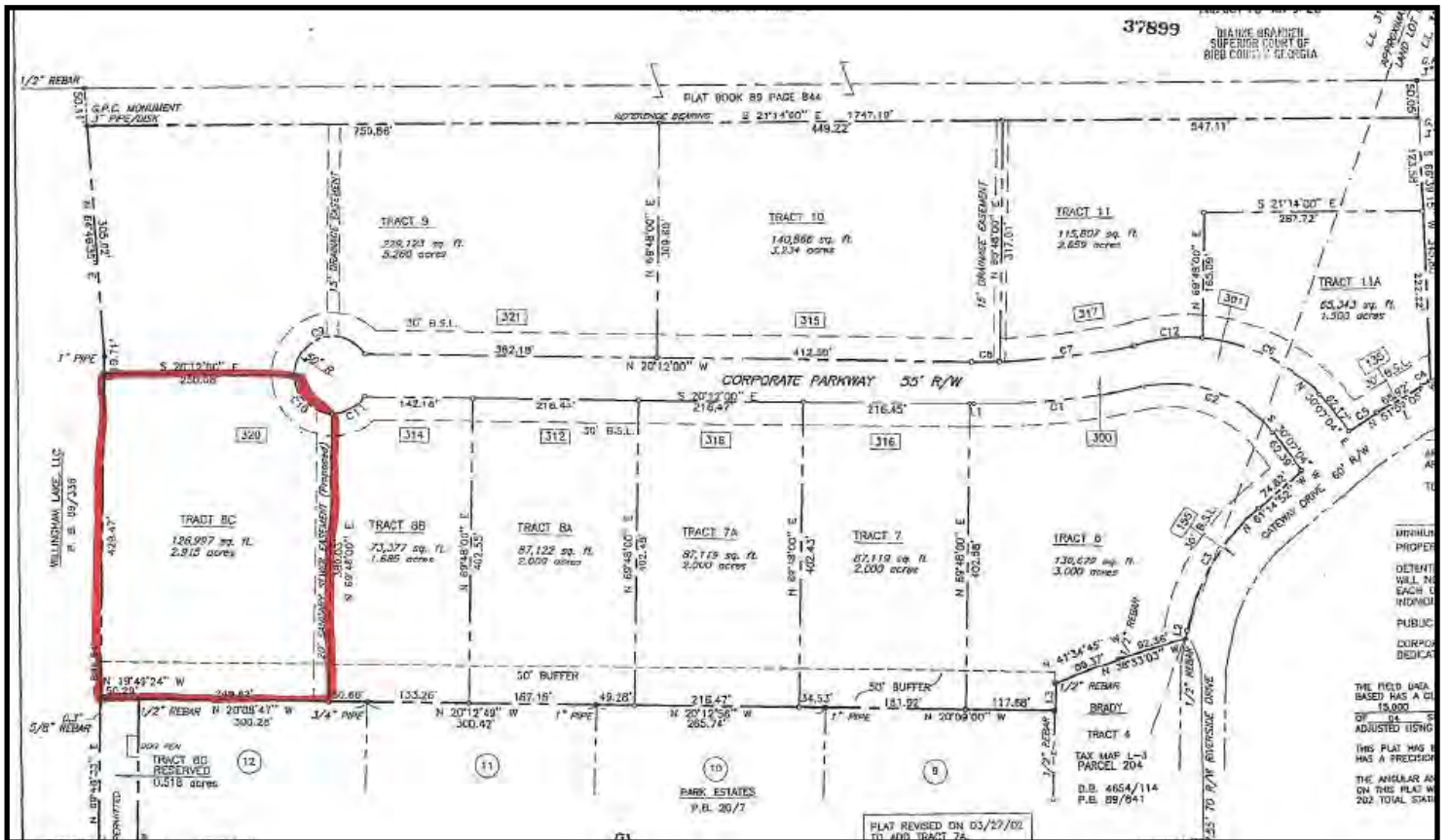


# LEASE

**BUILD TO SUIT • 5,000± SF - 14,000± SF BUILDING**

**330 CORPORATE PARKWAY, MACON, BIBB COUNTY, GA 31210**

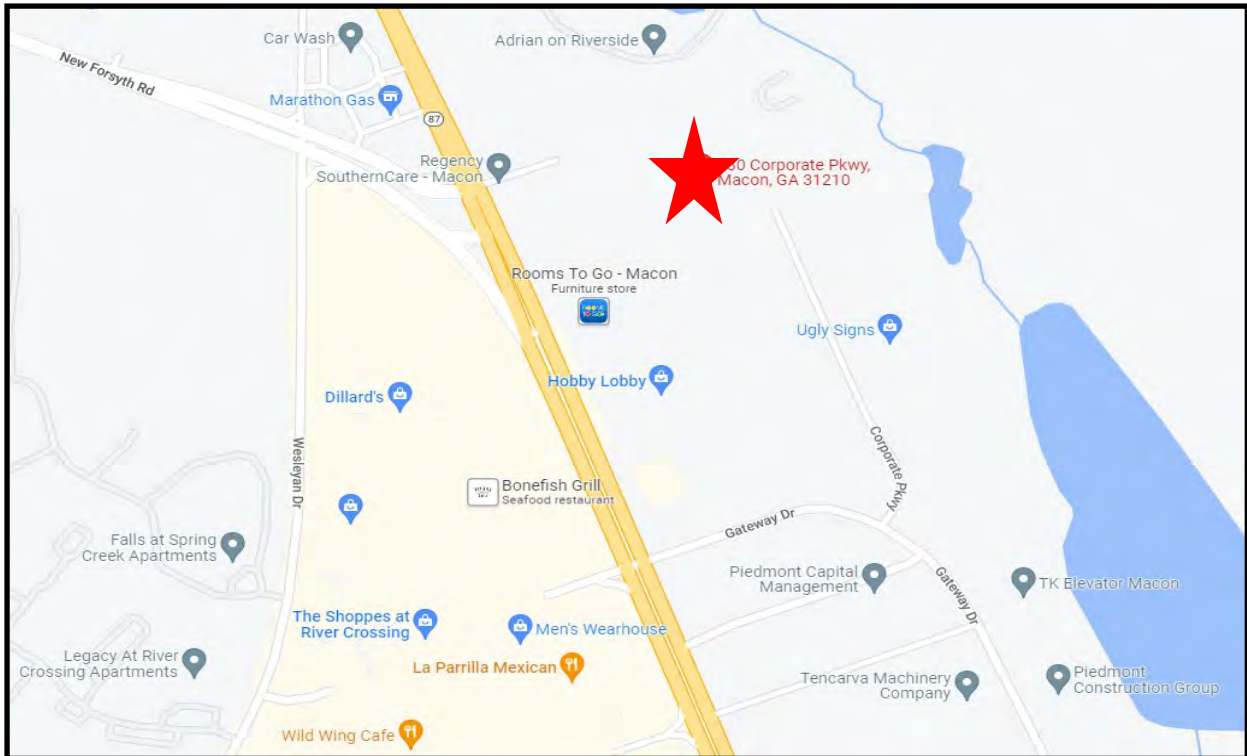
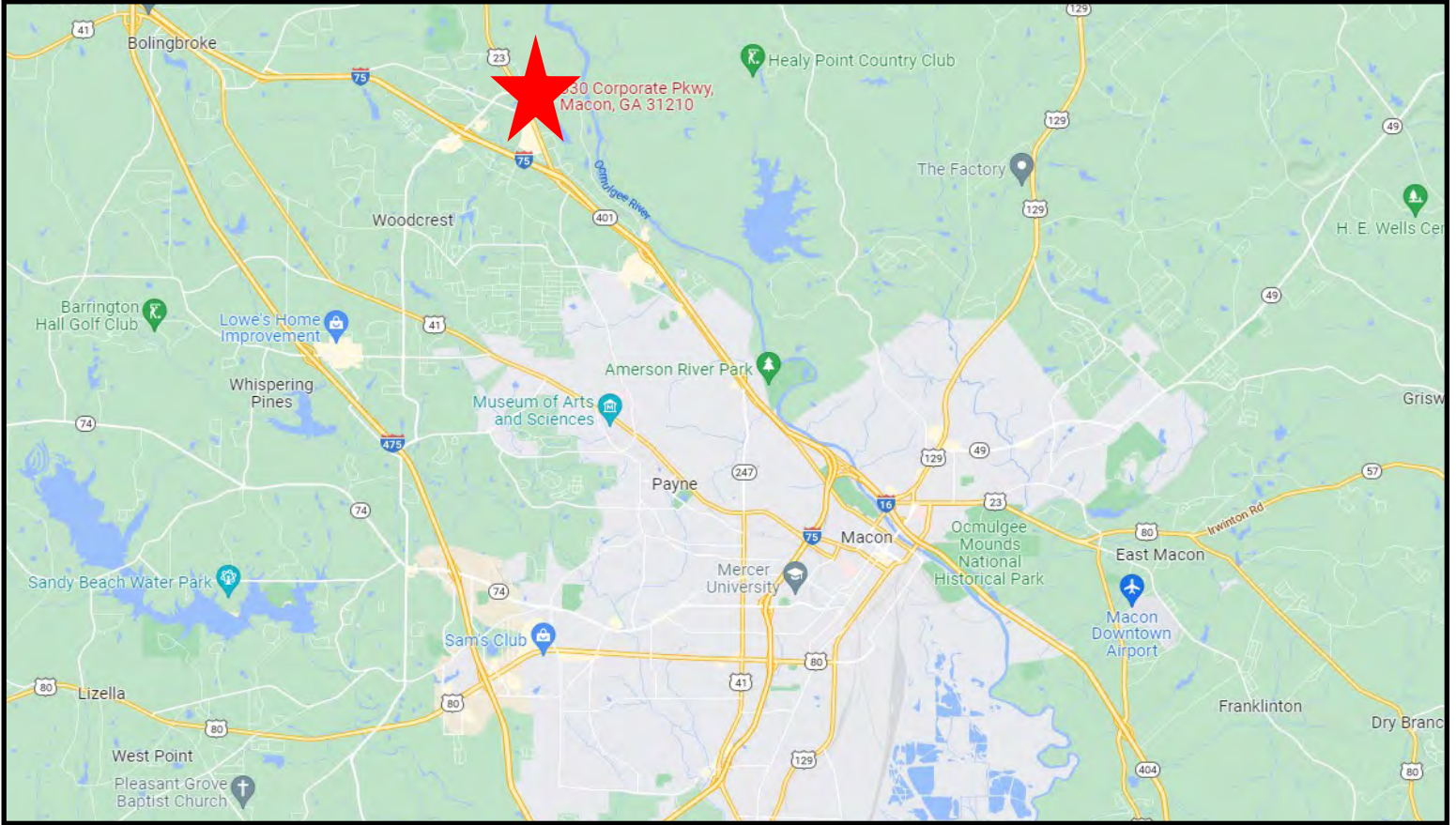
## PROPERTY SURVEY



# LEASE

**BUILD TO SUIT • 5,000± SF - 14,000± SF BUILDING**

**330 CORPORATE PARKWAY, MACON, BIBB COUNTY, GA 31210**



**Bradley Bloodworth**  
478.951.3712 Cell  
bradley.bloodworth@cbcworldwide.com



**COLDWELL BANKER  
COMMERCIAL**  
EBERHARDT & BARRY

**990 RIVERSIDE DR • MACON, GA 31201 • 478.746.8171 • CBCMACON.COM**