

Medical Office | For Lease

CBRE Upstate NY
PART OF THE AFFILIATE NETWORK

North Medical Center

5100 W. Taft Road
Liverpool, New York 13088



Medical office suites available for lease in North Medical Center, a highly visible five-story property near the intersection of W. Taft Road (12,678 AADT) and Buckley Road (14,323 AADT) in Liverpool.

The property is home to providers affiliated with St. Joseph's Health Hospital and SUNY Upstate Medical University as well as Laboratory Alliance of Central New York, Eye Surgeons of Central New York, Child and Adolescent Psychiatry, Associated Gastroenterologists, Colon Rectal Associates of Central New York, General & Cosmetic Dentistry, and more.

Suite	Available SF	Suite	Available SF
2I	998	3I	2,195
2J	2,566	3J	998
2K	4,010	4AB	3,896
3B	1,168	4C, 4DE	3,791
		4K	1,490

Property Highlights

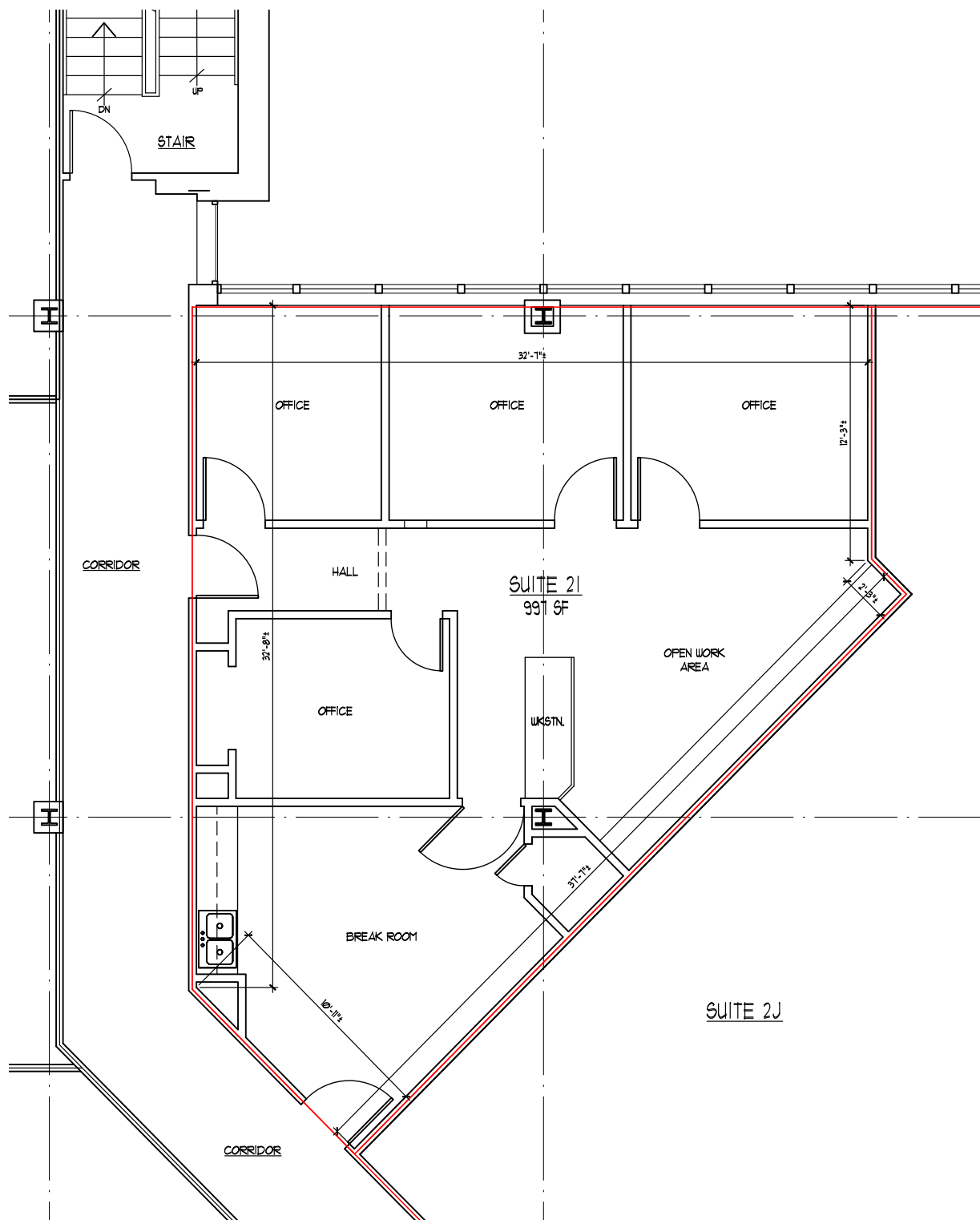
- + 998 to 4,010 SF medical office suites available
- + Most suites can be subdivided
- + 24-hour access
- + Ample parking
- + Loading dock and freight elevator for deliveries
- + Property management located close to campus
- + Property built in 1990
- + Approximately 2 mi. to I-81 and Syracuse Hancock International Airport
- + 8 mi. north of downtown Syracuse and major hospitals
- + Nearby amenities include: Wegmans, CoreLife Eatery, Brooklyn Pickle, Dunkin', Breugger's Bagels, Walgreens, Blink/Evolve Fitness, Planet Fitness, Chuck Hafner's Farmers Market & Garden Center

Area Demographics	1 mi.	3 mi.	5 mi.
Total Population	8,665	60,266	156,603
Avg. Household Income	\$98,013	\$88,904	\$86,669
Housing Units	4,124	28,632	74,159

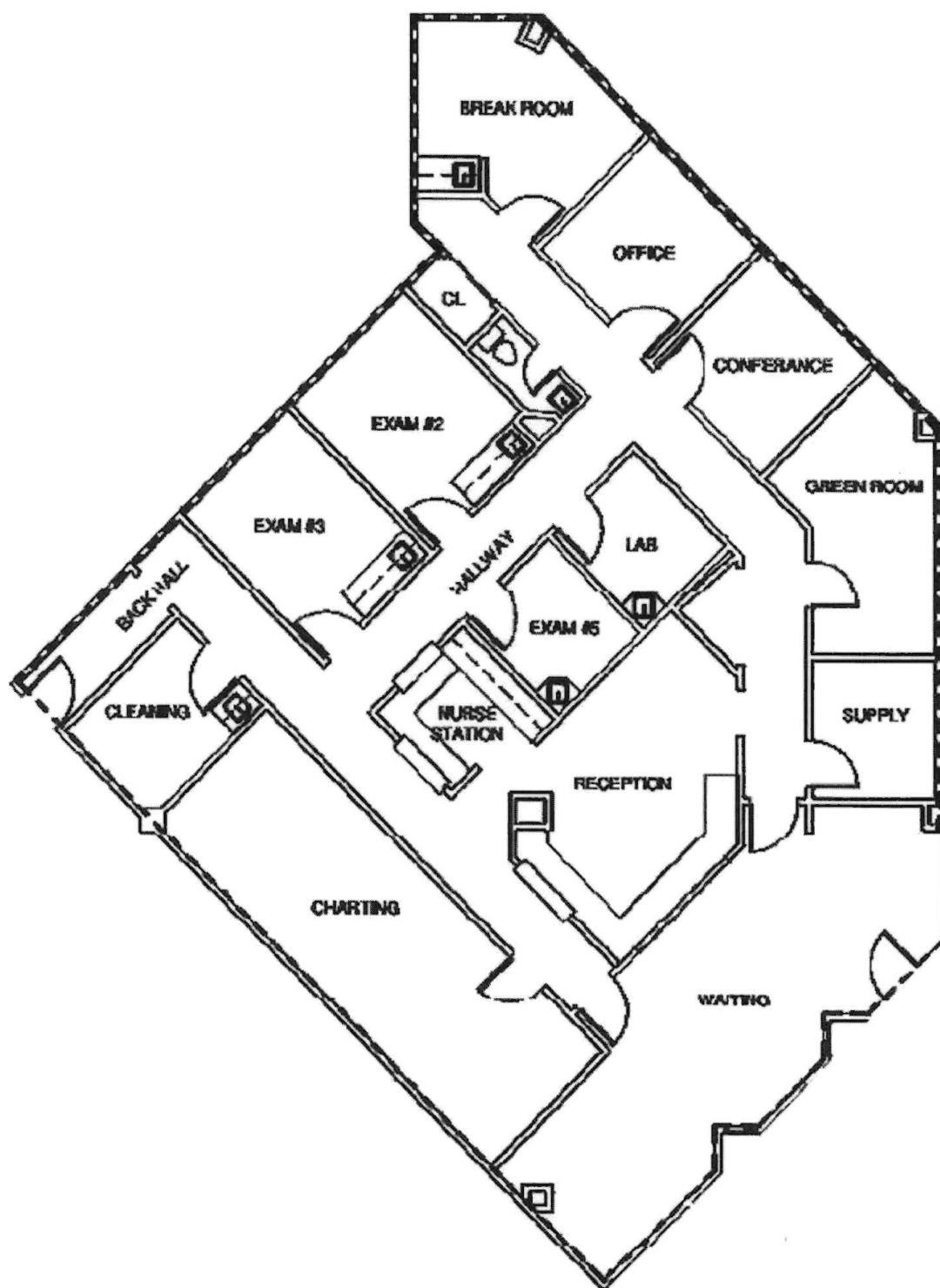




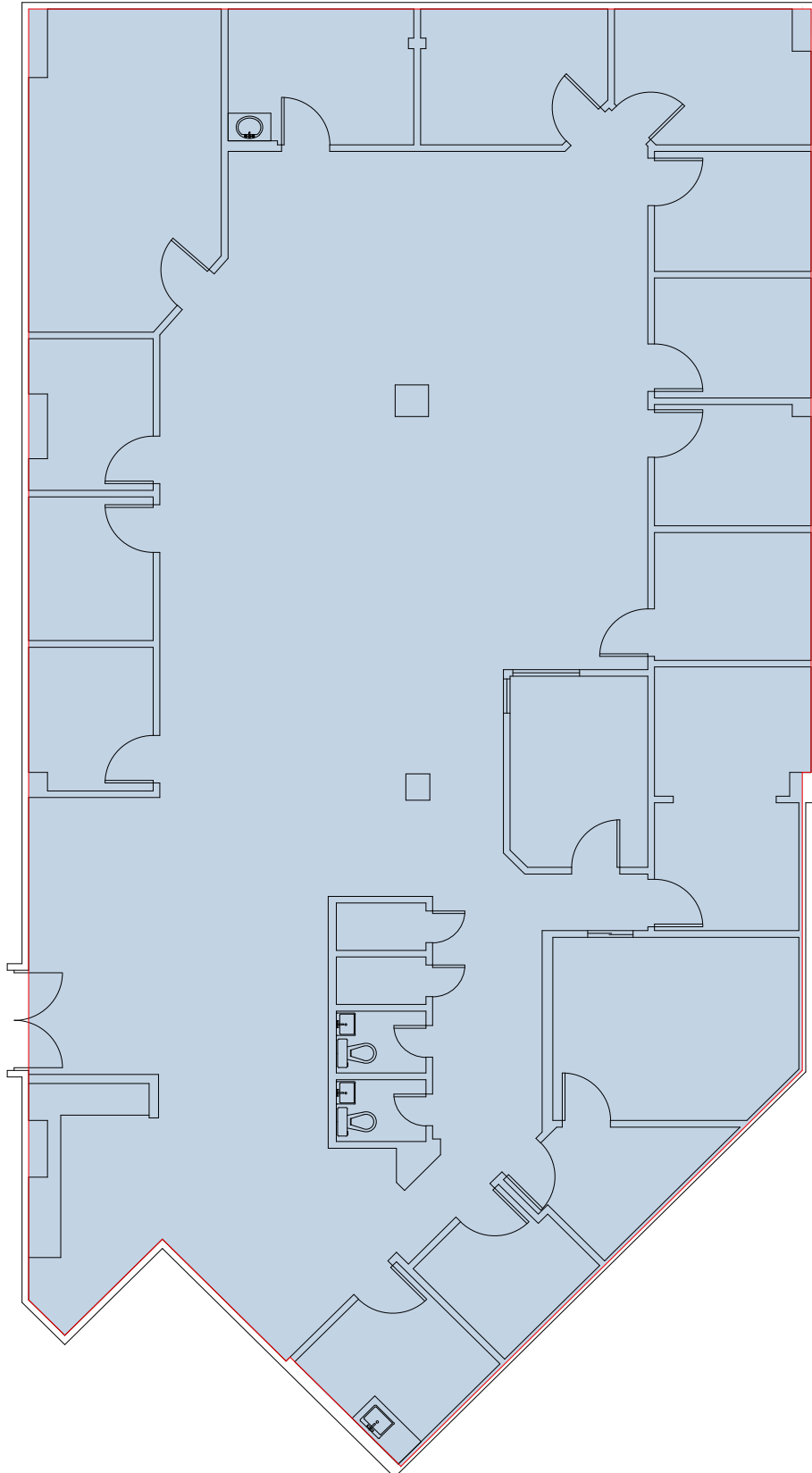
Suite 2I - 998 SF



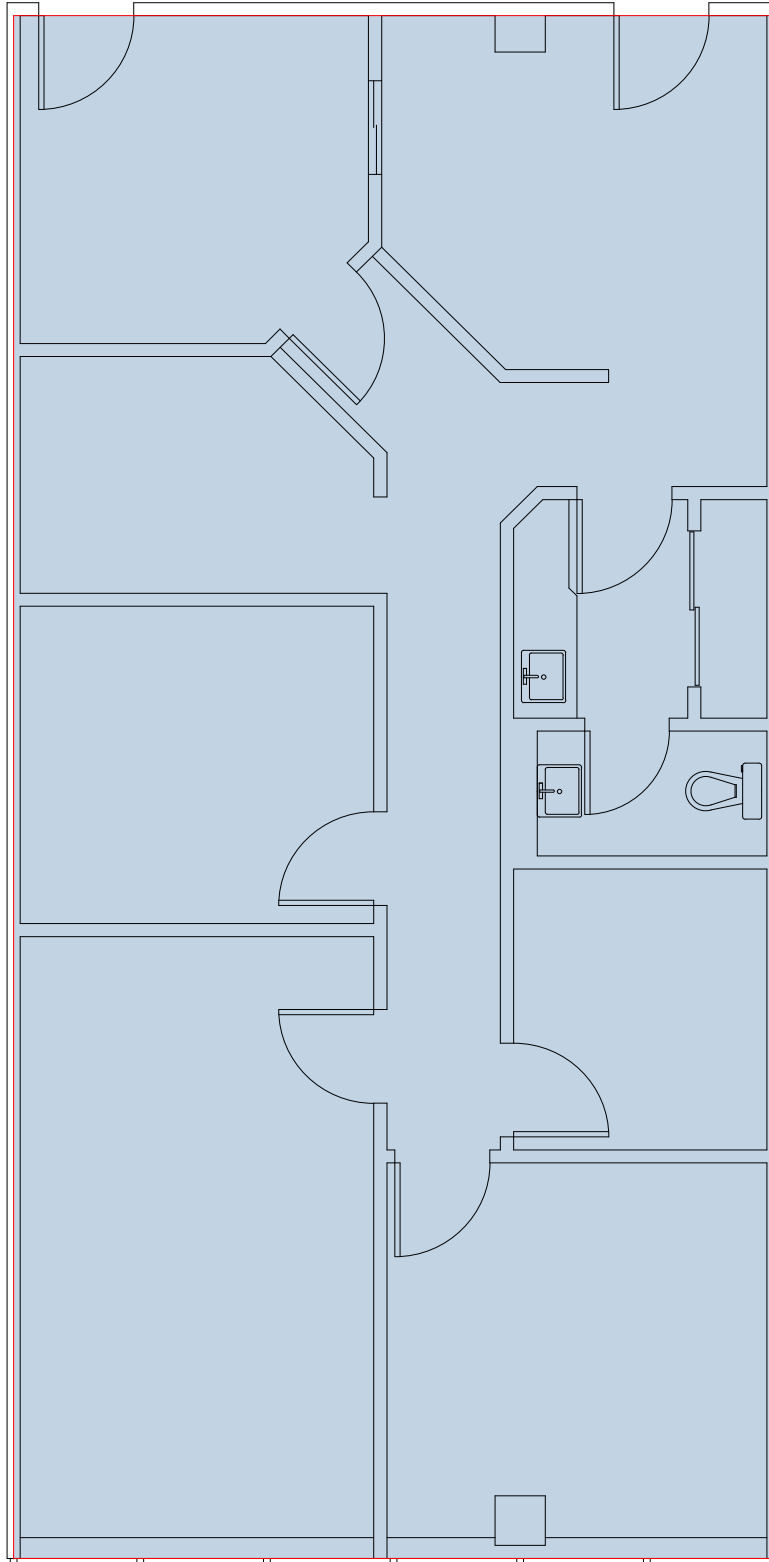
Suite 2J - 2,566 SF



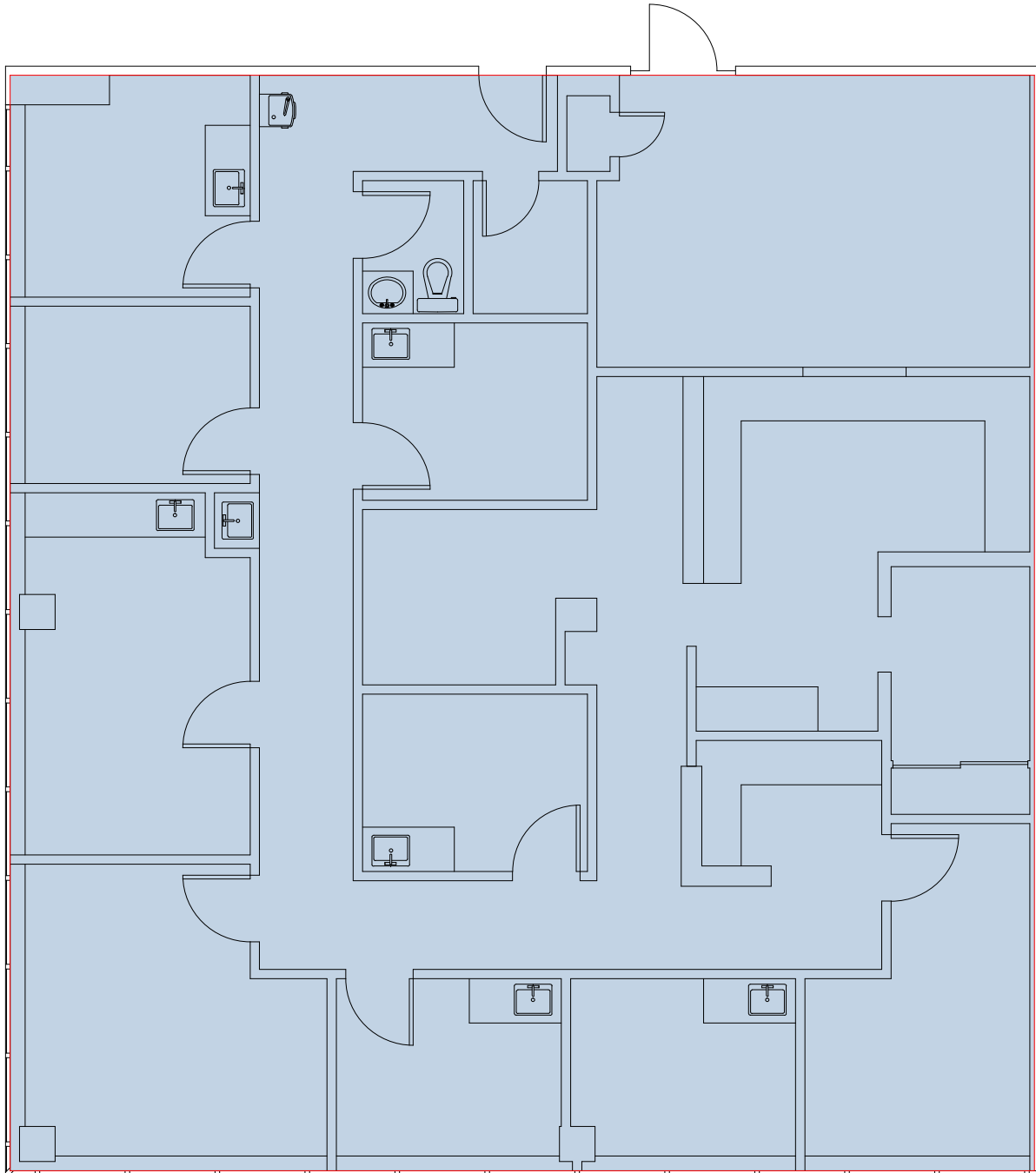
Suite 2K - 4,010 SF



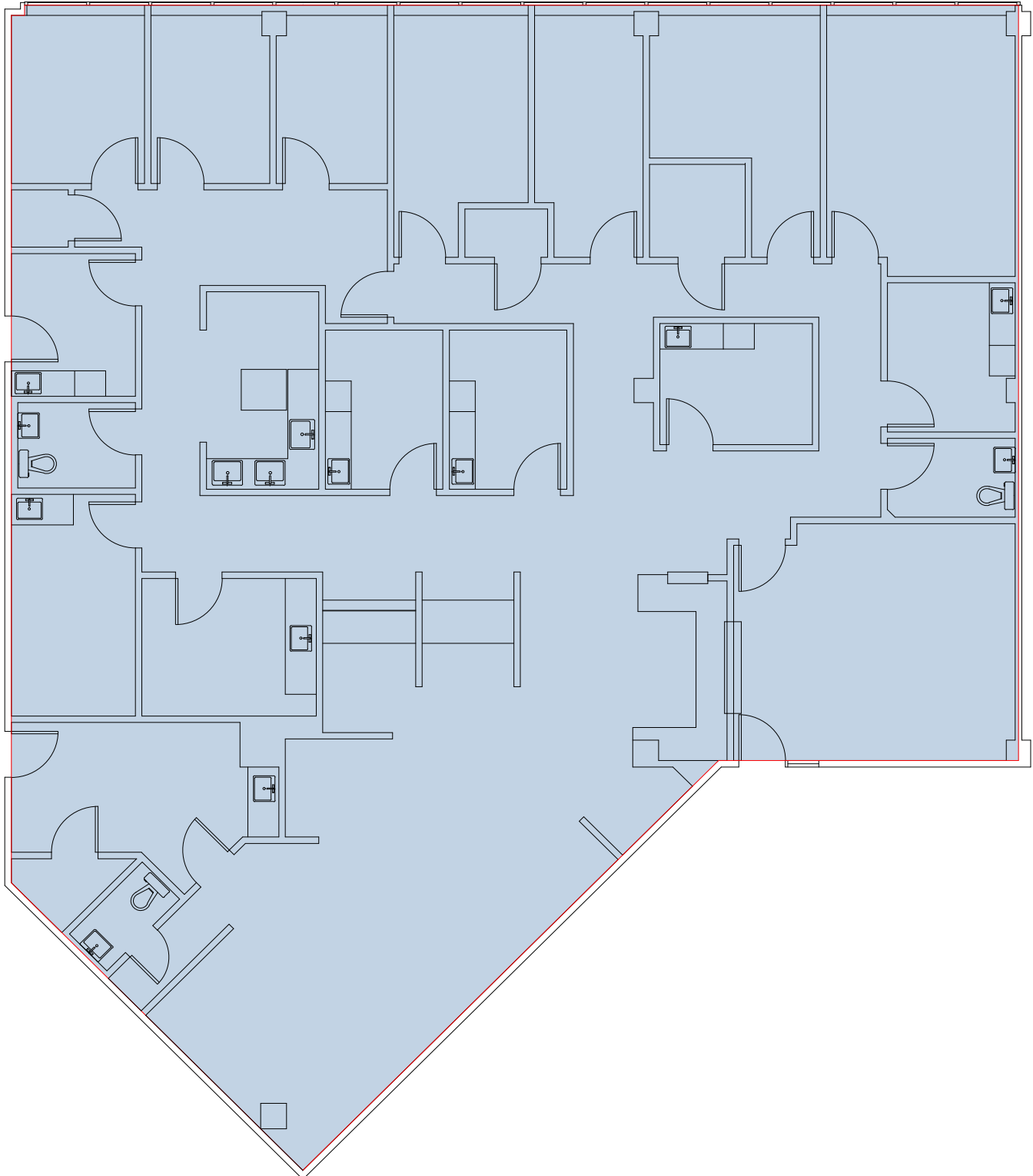
Suite 3B - 1,168 SF



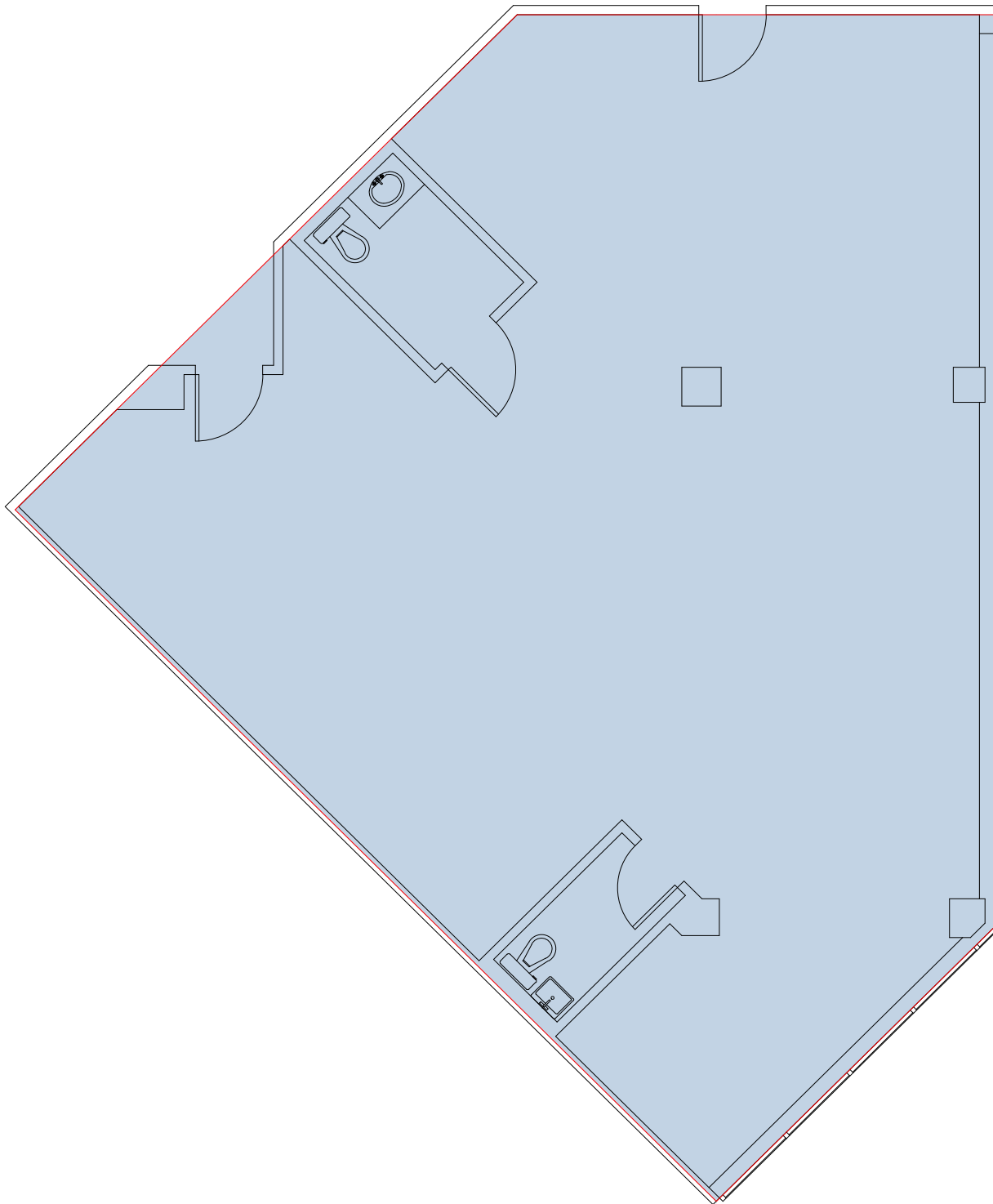
Suite 3I - 2,195 SF

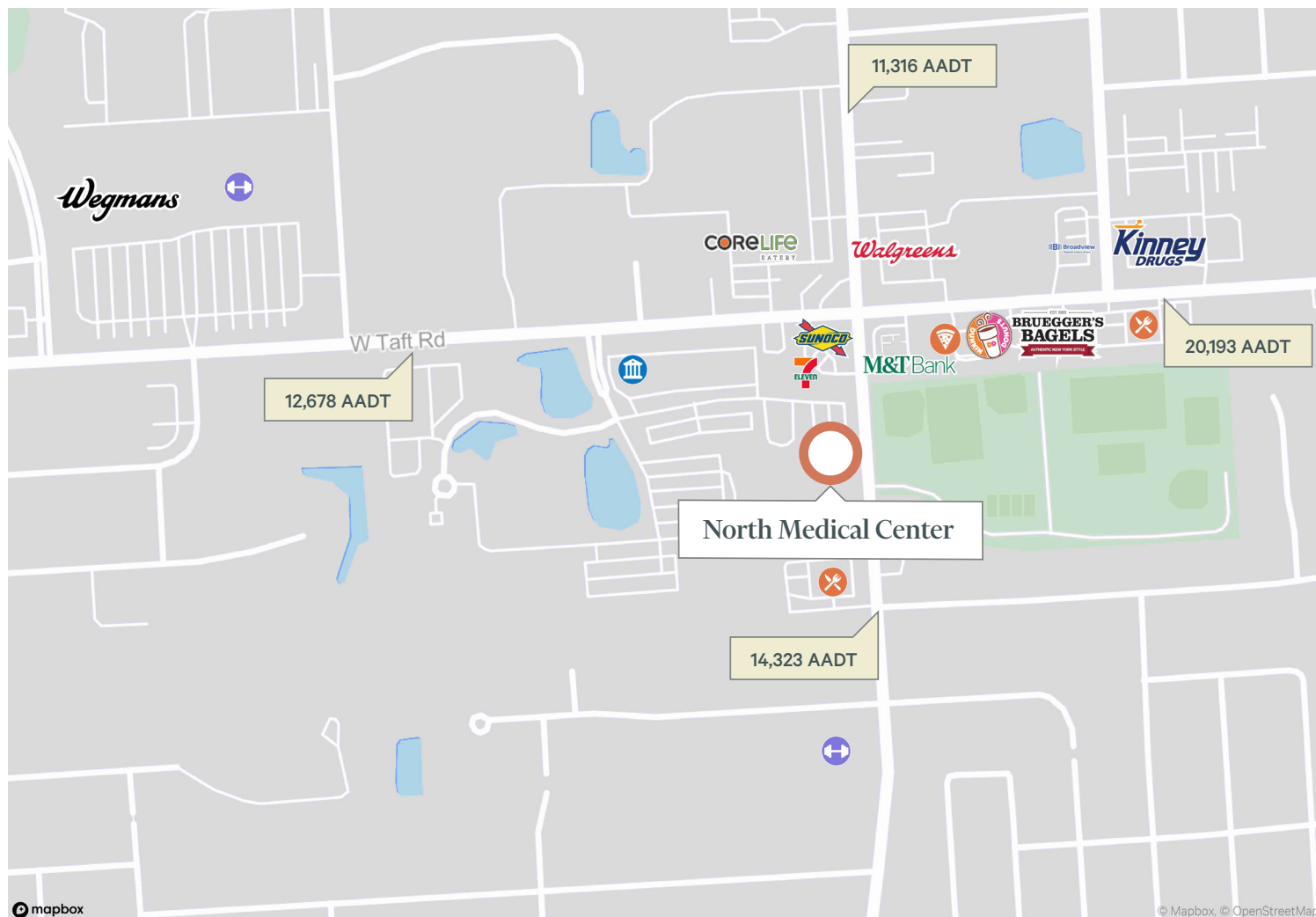


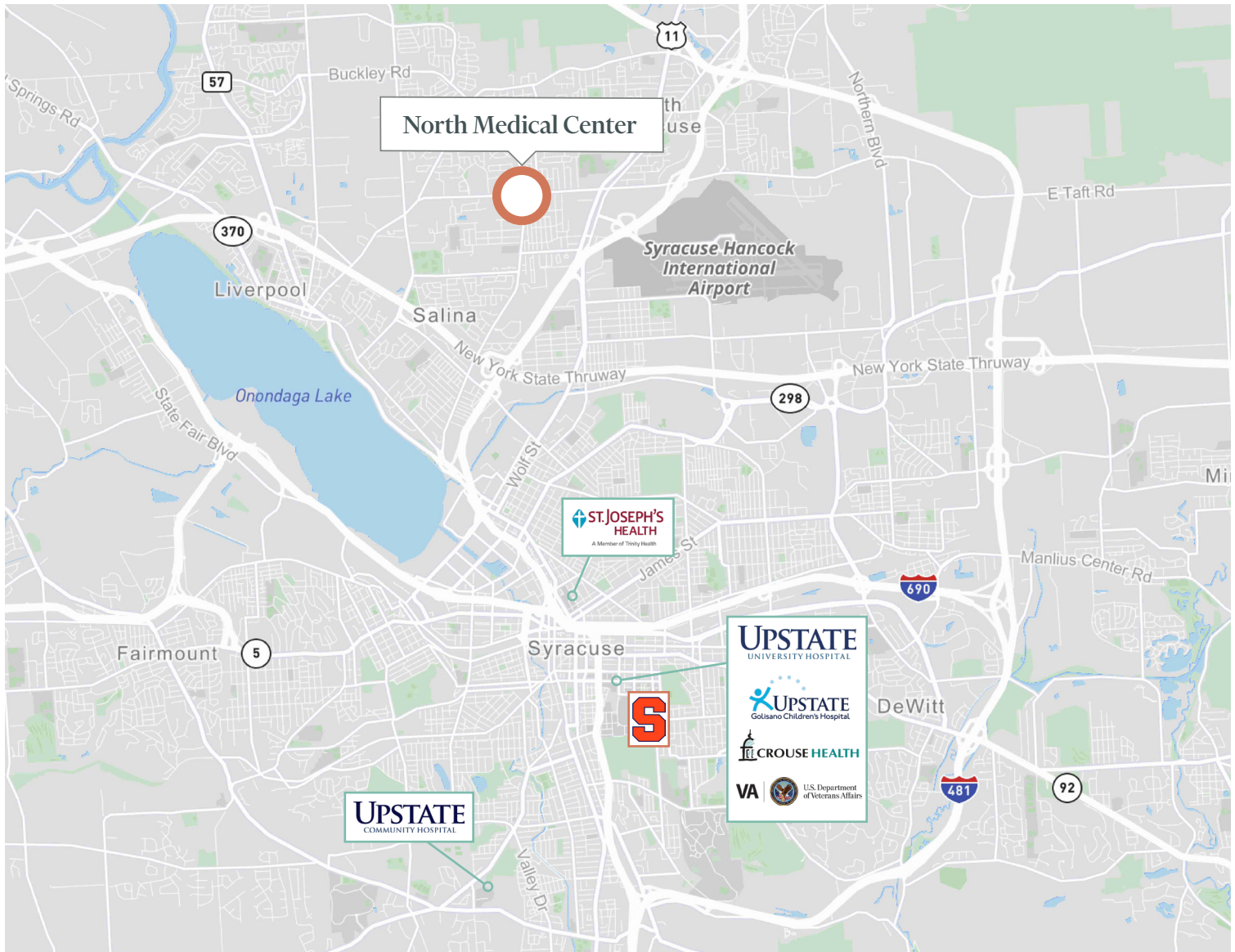
Suite 4AB - 3,896 SF



Suite 4K - 1,490 SF







Contact Us

Bill Anninos

Lic. Associate Real Estate Broker
+1 315 422 4200 x 315
bill.anninos@cbre-syr.com

Lawrence Papaleo

Lic. Associate Real Estate Broker
+1 315 422 4200 x 312
lawrence.papaleo@cbre-syr.com

CBRE Upstate NY

500 Plum Street, Suite 402
Syracuse, New York 13204
+1 315 422 4200

© 2025 CBRE Upstate NY, part of the CBRE Affiliate Network. All rights reserved. This information has been obtained from sources believed reliable, but has not been verified for accuracy or completeness. You should conduct a careful, independent investigation of the property and verify all information. Any reliance on this information is solely at your own risk. CBRE Upstate NY and the CBRE Upstate NY logo are service marks of CBRE Upstate NY. All other marks displayed on this document are the property of their respective owners, and the use of such logos does not imply any affiliation with or endorsement of CBRE Upstate NY. Photos herein are the property of their respective owners. Use of these images without the express written consent of the owner is prohibited.