

FOR SALE

3343 MINERAL DRIVE

EARLYSVILLE, VIRGINIA



FOR MORE INFORMATION

Bart McIntosh
Associate
+1 434 284 4005
bart.mcintosh@colliers.com

Albert Hernandez, CCIM
Vice President
+1 434 284 4003
albert.hernandez@colliers.com



Colliers
701 E. Water Street, Suite 301
Charlottesville, VA 22902
P: +1 434 974 7377
colliers.com



TABLE OF CONTENTS

- 01 EXECUTIVE SUMMARY
- 03 LOCATION
- 05 ABOUT CHARLOTTESVILLE

CONFIDENTIALITY & CONDITIONS

This Memorandum contains select information pertaining to the Property and the Owner, and does not purport to be all-inclusive or contain all or part of the information which prospective investors may require to evaluate a purchase of the Property. The information contained in this Memorandum has been obtained from sources believed to be reliable, but has not been verified for accuracy, completeness, or fitness for any particular purpose. All information is presented “as is” without representation or warranty of any kind. Such information includes estimates based on forward-looking assumptions relating to the general economy, market conditions, competition and other factors which are subject to uncertainty and may not represent the current or future performance of the Property. All references to acreages, square footages, and other measurements are approximations. This Memorandum describes certain documents, including leases and other materials, in summary form. These summaries may not be complete, nor accurate descriptions of the full agreements referenced. Additional information and an opportunity to inspect the Property may be made available to qualified prospective purchasers. You are advised to independently verify the accuracy and completeness of all summaries and information contained herein, to consult with independent legal and financial advisors, and carefully investigate the economics of this transaction and Property’s suitability for your needs. ANY RELIANCE ON THE CONTENT OF THIS MEMORANDUM IS SOLELY AT YOUR OWN RISK.

The Owner expressly reserves the right, at its sole discretion, to reject any or all expressions of interest or offers to purchase the Property, and/or to terminate discussions at any time with or without notice to you. All offers, counteroffers, and negotiations shall be non-binding and neither Colliers International nor the Owner shall have any legal commitment or obligation except as set forth in a fully executed, definitive purchase and sale agreement delivered by the Owner.

©2025, Colliers International Virginia, LLC. All rights reserved.

CONFIDENTIALITY AGREEMENT

Your receipt of this Memorandum constitutes your acknowledgment that (i) it is a confidential Memorandum solely for your limited use and benefit in determining whether you desire to express further interest in the acquisition of the Property, (ii) you will hold it in the strictest confidence, (iii) you will not disclose it or its contents to any third party without the prior written authorization of the owner of the Property (“Owner”) or Colliers International, and (iv) you will not use any part of this Memorandum in any manner detrimental to the Colliers International. If after reviewing this Memorandum, you have no further interest in purchasing the Property, kindly return it to Colliers International.

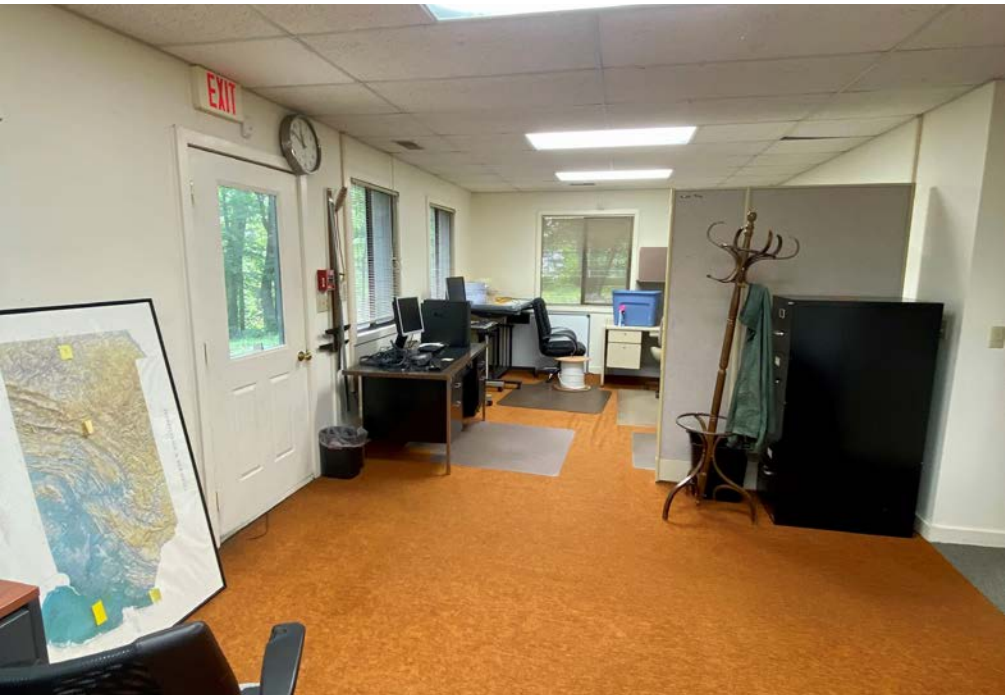
THE OFFERING

This rare airport location is in a highly desirable location, offering direct access to the Charlottesville Regional Airport and Route 29. The property is zoned light industrial, allowing for a wide range of potential uses and immense development opportunities.

The office building is fully built out over 2 floors with 12 offices, conference room, kitchen, large bull pen area and lobby/reception. Further amenities include full bathroom with a shower, large outdoor deck and abundant parking. The layout supports a multi-tenant configuration. Great opportunity for owner-occupants, investors, or businesses seeking a strategic location with flexibility.

ASSET DESCRIPTION:

Property Address	3343 Mineral Drive, Earlysville, VA
Tax map Parcel ID	032000000057A0
Zoning	LI
Land Area	4.16 Acres
Building Height	2-stories
Building Size	4,792 SF
Parking	30 spaces



RARE, HIGHLY DESIRABLE AIRPORT LOCATION

- Well-designed and appointed interior with office amenities
- Light Industrial zoning with expansion capability

3343 MINERAL DR
Address

4,792 SF
Building Size

\$1,895,000
Offering Price

STRATEGIC LIGHT INDUSTRIAL LOCATION WITH UNMATCHED ACCESSIBILITY

Market Opportunity & Scarcity: This 4.16-acre Light Industrial zoned property offers exceptional flexibility for high-demand commercial development in one of Central Virginia’s most supply-constrained markets. Light Industrial zoning near Charlottesville is increasingly scarce and highly coveted due to explosive demand for small bay warehouses, flex warehouse space, and self-storage facilities. The Charlottesville market faces a critical shortage of inventory in these product types, creating exceptional development and investment opportunities.

Economic Benefits: The combination of limited LI-zoned inventory and high market demand creates strong development fundamentals, while the strategic location offers lower operational costs than urban alternatives. The 4.16-acre size provides expansion capability while remaining manageable for medium-scale operations.

This property represents a rare opportunity to capitalize on undersupplied market segments in a proven, high-growth corridor with the convenience of urban proximity and logistical advantages of airport access.

HIGH-DEMAND DEVELOPMENT POTENTIAL

- Small Bay Warehouses: Perfect for e-commerce fulfillment, small businesses, and contractors who need flexible warehouse space. An opportunity to serve multiple small businesses in a supply-starved market
- Flex Warehouse Facilities: Ideal for the growing demand from tech companies, startups, and service businesses requiring combination office/warehouse space
- Self-Storage: Underserved market with strong demographics and university population driving consistent demand

LOCATION ADVANTAGES

- Airport Adjacent: Direct access to aviation operations, cargo capabilities, and expedited shipping
- Minutes to Charlottesville: Access to skilled workforce, university resources (UVA), and urban amenities
- Major Thoroughfare Access: Seamless connectivity for efficient logistics and regional market reach



NORTH FORK
A UVA DISCOVERY PARK

North Fork - UVA Discovery Park

North Fork is a thriving discovery park where the University of Virginia’s spirit of ingenuity leads to dynamic collaboration. Just a few miles north of Charlottesville, the park spans more than 500 acres that will ultimately contain more than 3.5 million SF of science and technology firms, government agencies, academic institutions, start-ups, and nonprofits.

www.discovernorthfork.com



CHARLOTTESVILLE: BUSINESS FRIENDLY COMMUNITY

- A well educated workforce including access to talent and resources at UVA
- A diverse and stable economy built around the University, medical services, financial services, clean energy, and life sciences
- Proximity to major U.S. markets
- A state-of-the-art telecommunications infrastructure with an extensive fiber optic network and digital switching capability
- Strategic location near Washington D.C. and Richmond
- Well developed transportation network that includes air, rail, and interstate highway options

2024 DEMOGRAPHICS

	1 miles	5 miles	10 miles
Population	14,854	100,724	134,823
Daytime Population	19,166	141,206	170,174
Households	7,156	41,399	54,588
Average Household Income	\$115,455	\$118,066	\$131,653

Detailed demographics available upon request

STRONG & EXCITING BUSINESS CLIMATE

Virginia is consistently ranked one of the best places to do business by CNBC (#1 2024) and Forbes (#4 2022) due to a range of compelling business incentives, attractive employment demographics, central location, low cost of doing business, robust infrastructure, quality of life features, and future economic development opportunities.

Albemarle County is one of Virginia’s most thriving localities, and among the most highly regarded, dynamic and desirable places to work and live in the country. Low student-teacher ratios and high graduation rates demonstrate why the Albemarle County school system is among the top 10% in the state, and those wishing to continue their education and professional development will find numerous workforce development facilities as well as higher education facilities such as the University of Virginia and Piedmont Virginia Community College. Over 50% of the county’s residents have a bachelor’s degree or higher. There are an estimated 105,000 people living in the county, which is comprised of 726 square miles.

Charlottesville is centrally located in the eastern foothills of the Blue Ridge Mountains in Central Virginia

Charlottesville is strategically located just 40 miles south of the Washington D.C. MSA and under 60 miles west of the of Richmond’s West End, and provides direct access to points across the nation through interstate, air and rail service.

“#4 Top 50 best cities for entrepreneurs”



“10 hippest Mid-Sized Cities in America”



“Top 10 Best Places to Retire”



“Top five destinations in the country”



“One of the country’s favorite mountain towns”



“One of the happiest and healthiest”





FOR SALE
3343 MINERAL DRIVE

EARLYSVILLE, VIRGINIA

FOR MORE INFORMATION

Bart McIntosh
Associate
+1 434 284 4005
bart.mcintosh@colliers.com

Albert Hernandez, CCIM
Vice President
+1 434 284 4003
albert.hernandez@colliers.com

Colliers

Colliers
701 E. Water Street, Suite 301
Charlottesville, VA 22902
P: +1 434 974 7377
colliers.com