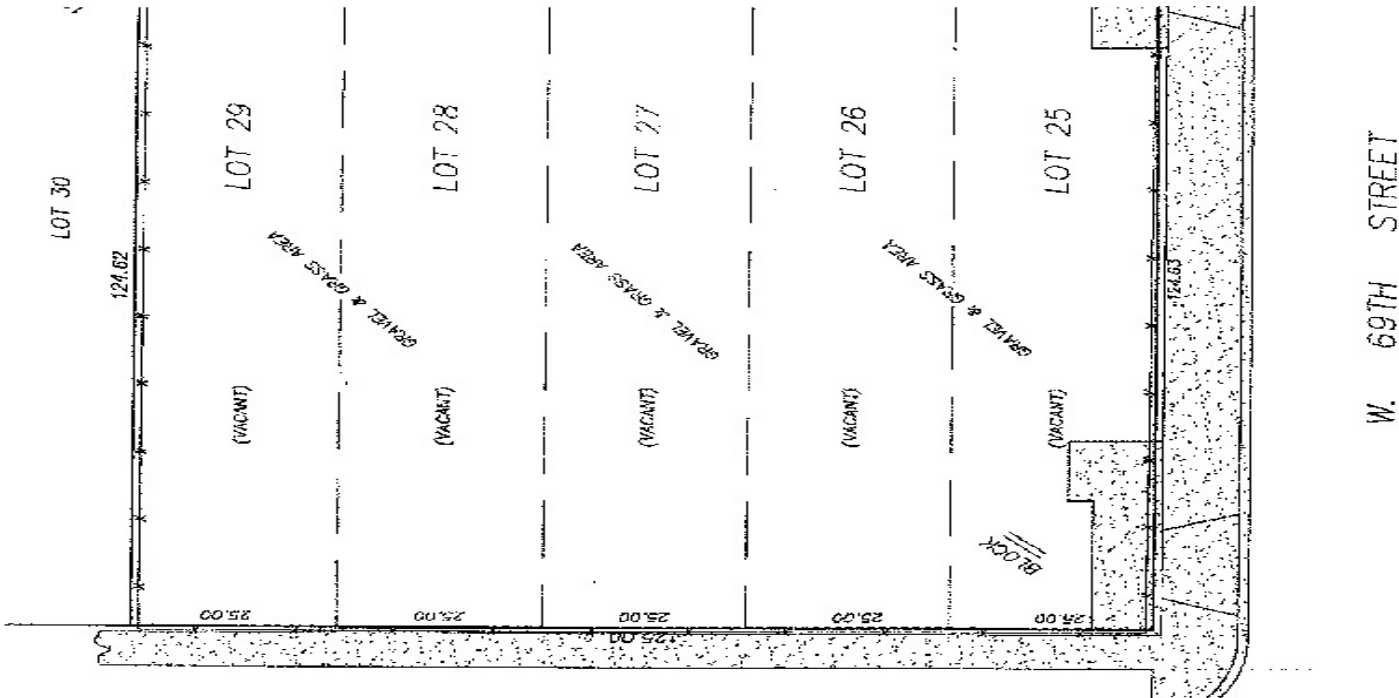


1624 W 69th St, Chicago, IL 60636

# 1624 W 69th St



## OFFERING SUMMARY

Sale Price: \$110,000

Lot Size: 0.35 Acres

Price / SF: \$7.22

## PROPERTY OVERVIEW

This 15,625 sq ft lot is right across the street from the FOOD FOR LESS & BANK OF AMERICA anchored shopping center. The lot dimensions are 125 x 125 and the property is zoned B3-1. This zoning offers a broad range of retail & service uses as well as mixed use buildings. The site has great exposure as it faces the entrance to the shopping center. Great development opportunity here.

## PROPERTY HIGHLIGHTS

- Densely Populated Area
- Major Shopping District
- Major Business District
- 125 ft Frontage

for more information

**Neil Haleem**  
708.873.5540  
neil@networkregroup.com



1624 W 69th St, Chicago, IL 60636

# 1624 W 69th St



for more information

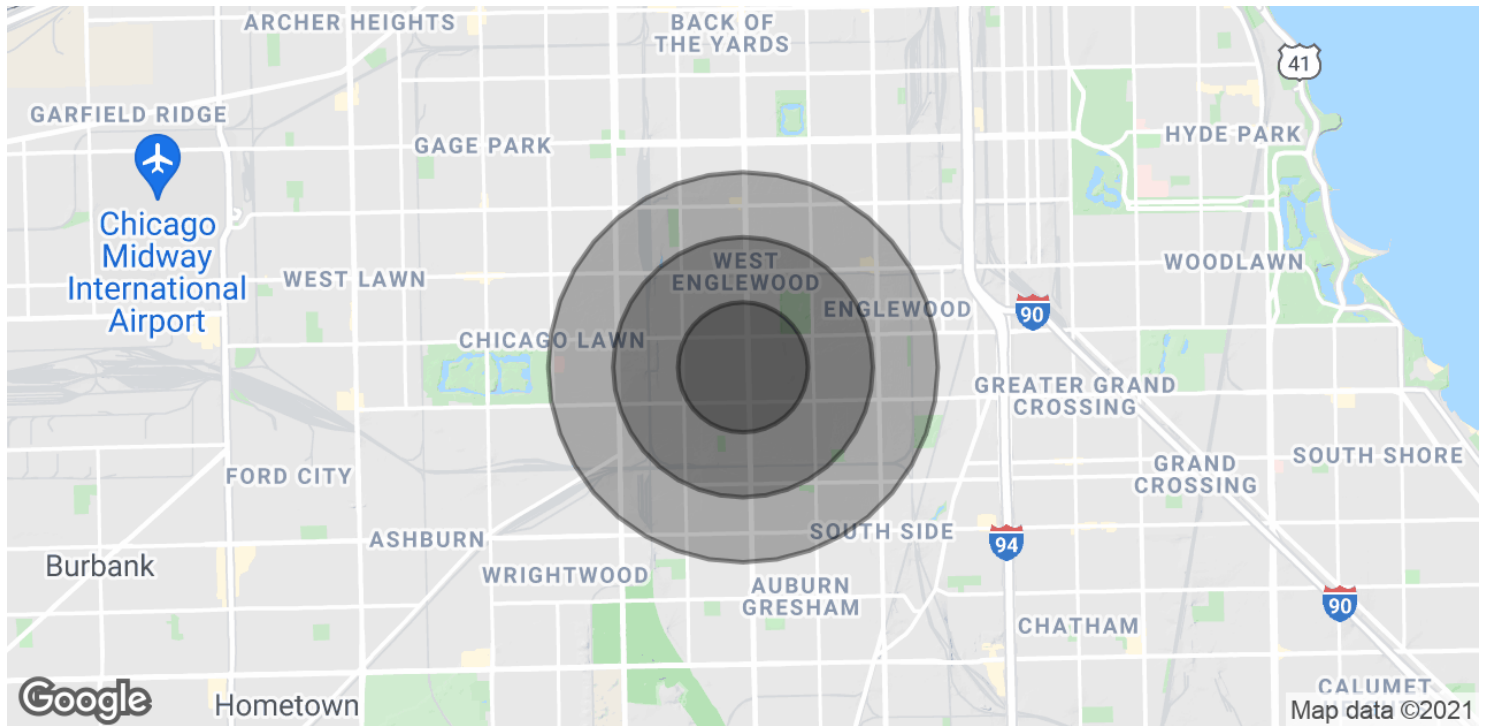
**Neil Haleem**

708.873.5540

neil@networkregroup.com

1624 W 69th St, Chicago, IL 60636

# 1624 W 69th St



## POPULATION

### 0.5 MILES

### 1 MILE

### 1.5 MILES

Total Population	10,883	39,836	94,110
Average age	28.2	30.0	31.4
Average age (Male)	23.5	25.3	26.8
Average age (Female)	33.5	35.0	35.7

## HOUSEHOLDS & INCOME

### 0.5 MILES

### 1 MILE

### 1.5 MILES

Total households	3,081	11,761	29,056
# of persons per HH	3.5	3.4	3.2
Average HH income	\$34,106	\$35,429	\$37,969
Average house value		\$137,977	\$157,986

\* Demographic data derived from 2010 US Census

for more information

**Neil Haleem**

708.873.5540

neil@networkregroup.com