



FOR LEASE

626 TAMALPAIS DRIVE
CORTE MADERA, CA

High-Visibility Stand-Alone
Office Building



REPRESENTED BY:

MATT STORMS, PARTNER
LIC # 01233478 (415) 461-1010, EXT 123
MSTORMS@KEEGANCOPPIN.COM



STAND-ALONE OFFICE BUILDING FOR LEASE



626 TAMALPAIS DRIVE
CORTE MADERA, CA

HIGH-VISIBILITY
OFFICE BUILDING

PROPERTY INFORMATION

HIGHLIGHTS

- Best hard-corner location
- Immediate access to Highway 101
- High visibility
- Directly across from the Corte Madera Town Center

DESCRIPTION OF PREMISES

High-visibility, stand-alone office building featuring 6 private offices, work room, kitchen/breakroom and 2 bathrooms



LEASE TERMS

Size

2,100+/- sq ft

Rate

\$14,000 per month

Terms

NNN

5 year lease term

Annual CPI

Parking

10 spaces on-site

Zoning

O (Office)

Keegan & Coppin Co., Inc.
101 Larkspur Landing Circle, Ste. 112
Larkspur, CA 94939
www.keegancoppin.com
(415) 461-1010

The above information, while not guaranteed, has been secured from sources we believe to be reliable. Submitted subject to error, change or withdrawal. An interested party should verify the status of the property and the information herein.

REPRESENTED BY:

MATT STORMS, PARTNER
LIC # 01233478 (415) 461-1010, EXT 123
MSTORMS@KEEGANCOPPIN.COM



STAND-ALONE OFFICE BUILDING FOR LEASE



626 TAMALPAIS DRIVE
CORTE MADERA, CA

**HIGH-VISIBILITY
OFFICE BUILDING**

DESCRIPTION OF AREA

Located approximately 12 miles north of San Francisco, Corte Madera is one of the most active commercial communities in Marin County. The Central Marin submarket, defined by the Corte Madera - Greenbrae - Larkspur corridor, constitutes the commercial core of Marin County and is the strongest office submarket, consistently enjoying the highest rents and lowest vacancy rates. It is the first choice for tenants that desire the best of location, accessibility and proximity to all services.

NEARBY AMENITIES

- Steps from dozens of cafes, shops and restaurants
- Private and public schools, from preschool through high school
- Thriving cultural community
- Across the street from the Corte Madera Town Center
- Minutes from the Village at Corte Madera

TRANSPORTATION ACCESS



3 minutes



5 minutes



Served by Routes 30 and 70



REPRESENTED BY:

MATT STORMS, PARTNER
KEEGAN & COPPIN CO., INC.
LIC # 01233478 (415) 461-1010, EXT 123
MSTORMS@KEEGANCOPPIN.COM

The above information, while not guaranteed, has been secured from sources we believe to be reliable. Submitted subject to error, change or withdrawal. An interested party should verify the status of the property and the information herein.



626 TAMALPAIS DRIVE PHOTOS



626 TAMALPAIS DRIVE
CORTE MADERA, CA

**HIGH-VISIBILITY
OFFICE BUILDING**



REPRESENTED BY: MATT STORMS, PARTNER
KEEGAN & COPPIN CO., INC.
LIC # 01233478 (415) 461-1010, EXT 123
MSTORMS@KEEGANCOPPIN.COM

The above information, while not guaranteed, has been secured from sources we believe to be reliable. Submitted subject to error, change or withdrawal. An interested party should verify the status of the property and the information herein.



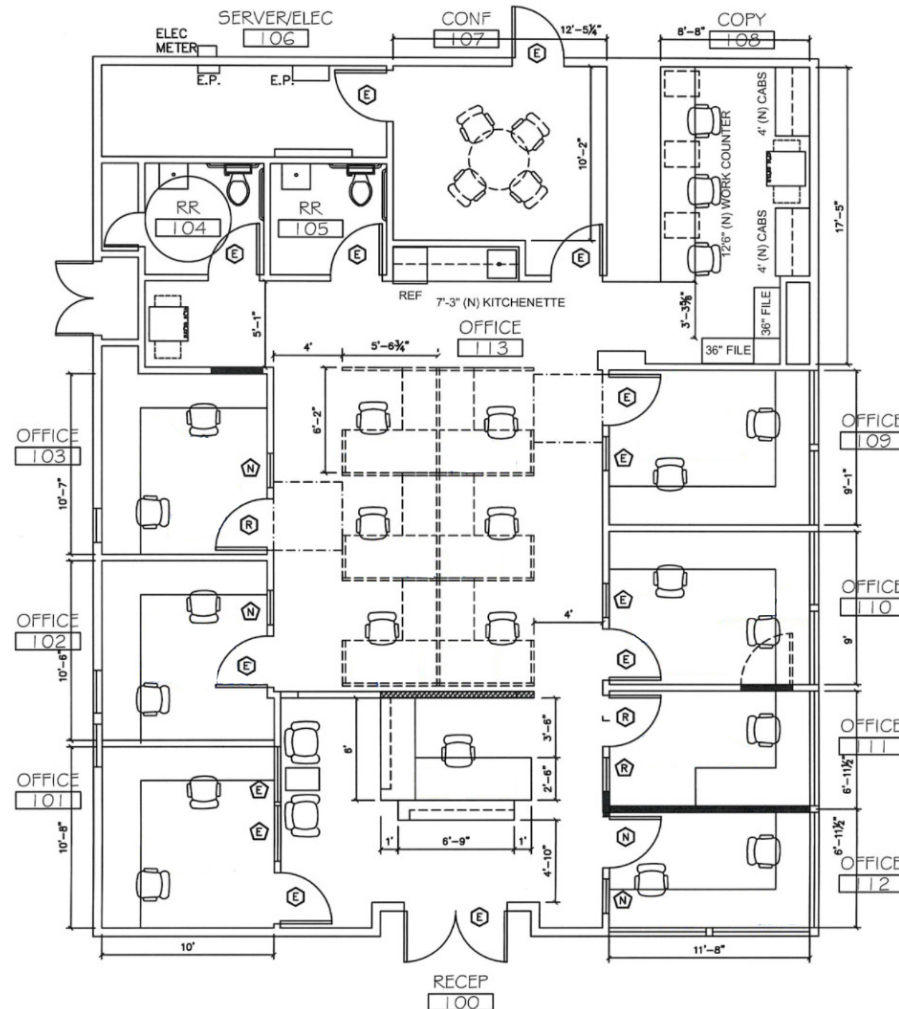
626 TAMALPAIS DRIVE FLOOR PLAN



626 TAMALPAIS DRIVE
CORTE MADERA, CA

HIGH-VISIBILITY
OFFICE BUILDING

2,100+/- RSF



REPRESENTED BY: **MATT STORMS, PARTNER**
KEEGAN & COPPIN CO., INC.
LIC # 01233478 (415) 461-1010, EXT 123
MSTORMS@KEEGANCOPPIN.COM

The above information, while not guaranteed, has been secured from sources we believe to be reliable. Submitted subject to error, change or withdrawal. An interested party should verify the status of the property and the information herein.