

NEWMARK

AVAILABLE FOR LEASE **100 RING ROAD WEST, GARDEN CITY**



A BOUTIQUE, CLASS A OFFICE BUILDING

AVAILABLE SPACE:

Suite 102 – 2,427 RSF

~~Suite 207 – 1,902 RSF~~ **LEASED**

OCCUPANCY:

Immediate

RENTAL RATE:

\$31.00 PSF + Electric

BUILDING HIGHLIGHTS:

- Walk to a myriad of fine restaurants, LA Fitness Health Club and Roosevelt Field Mall
- Owner/Manager on site
- Offers easy access to Meadowbrook Pkwy, Long Island Expressway, Northern & Southern State Parkways
- Dedicated parking lot with 4:1 ratio

FOR MORE INFORMATION, PLEASE CONTACT EXCLUSIVE BROKER:

Brian D. Lee

Principal, Executive Managing Director

516-487-7770

Brian.Lee@nrmk.com

nrmk.com

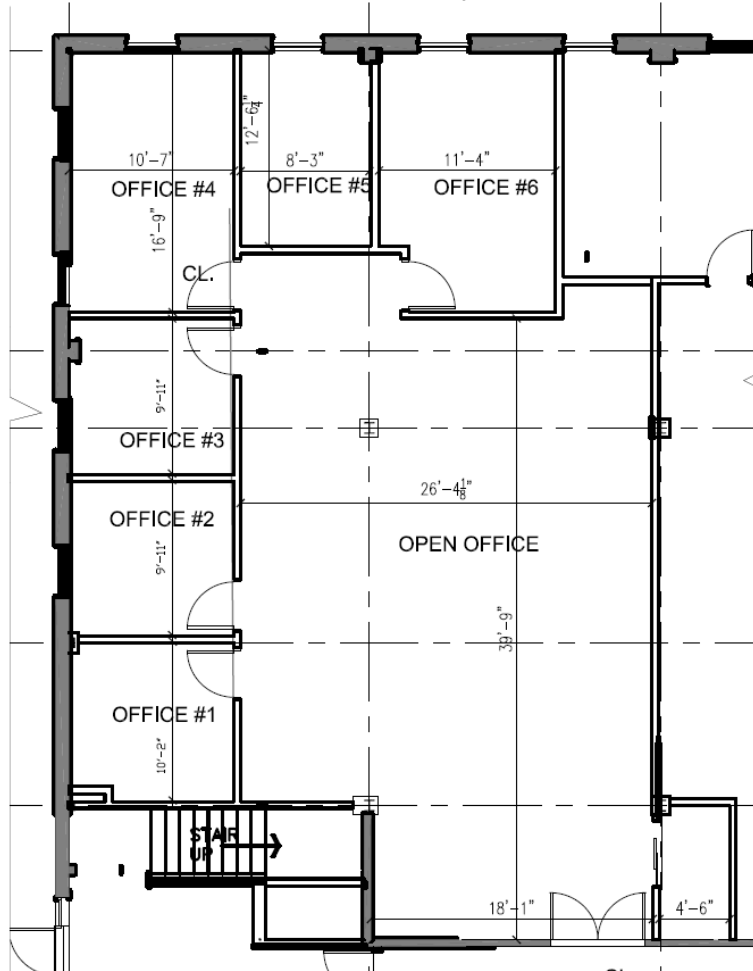
290 Broadhollow Road, Suite 103E, Melville, NY 11747



All information contained in this publication is derived from sources that are deemed to be reliable. However, Newmark has not verified any such information, and the same constitutes the statements and representations only of the source thereof, and not of Newmark. Any recipient of this publication should independently verify such information and all other information that may be material to any decision that recipient may make in response to this publication, and should consult with professionals of the recipient's choice with regard to all aspects of that decision, including its legal, financial, and tax aspects and implications. Any recipient of this publication may not, without the prior written approval of Newmark, distribute, disseminate, publish, transmit, copy, broadcast, upload, download, or in any other way reproduce this publication or any of the information it contains. This document is intended for informational purposes only and none of the content is intended to advise or otherwise recommend a specific strategy. It is not to be relied upon in any way to predict market movement, investment in securities, transactions, investment strategies or any other matter.
©2020 Newmark. All Rights Reserved.

NEWMARK

Suite 102 – 2,427 SF



Chipotle
Bobby's Burgers
Le Pain Quotidien



FOR MORE INFORMATION, PLEASE CONTACT EXCLUSIVE BROKER:

Brian D. Lee

Principal, Executive Managing Director

516-487-7770

Brian.Lee@nmrk.com