

FOR LEASE

1033 GAYLEY AVENUE

*Stunning Colonial Architecture:
Timeless design offering charm,
character and abundant lighting*

LOS ANGELES, CA 90024



Excellent space for a therapist, medical, law firm, accountant, estheticians

Prime Gayley Avenue Frontage: Immediate access to UCLA with premium Westwood Village visibility

Directly Across from Whole Foods - positioned for maximum visibility and foot traffic

Future Host of the 2028 Olympics: Set to become an iconic destination with global exposure

Stunning Colonial Architecture: Timeless design offering charm and character

Private On-Site Garden

Upcoming Westwood/UCLA Metro Station: Anticipated Purple Line stop in 2027

2 separate stairwells and elevator access

Secure private building in the heart of Westwood Village

SUITE AVAILABILITY

Suite #	Total SF	Suite #	Total SF	Suite #	Total SF
SUITE 104	±1,397 RSF	SUITE 117	±1,095 RSF	SUITE 202	±377 RSF
SUITE 108	±561 RSF	SUITE 200	±2,602 RSF	SUITE 204	±1,540 RSF
SUITE 111	±702 RSF	SUITE 201	±357 RSF	SUITE 207	±802 RSF

BRITTNEY MCCARTHY
424.653.1825
brittney.mccarthy@kidder.com
LIC N° 01947053

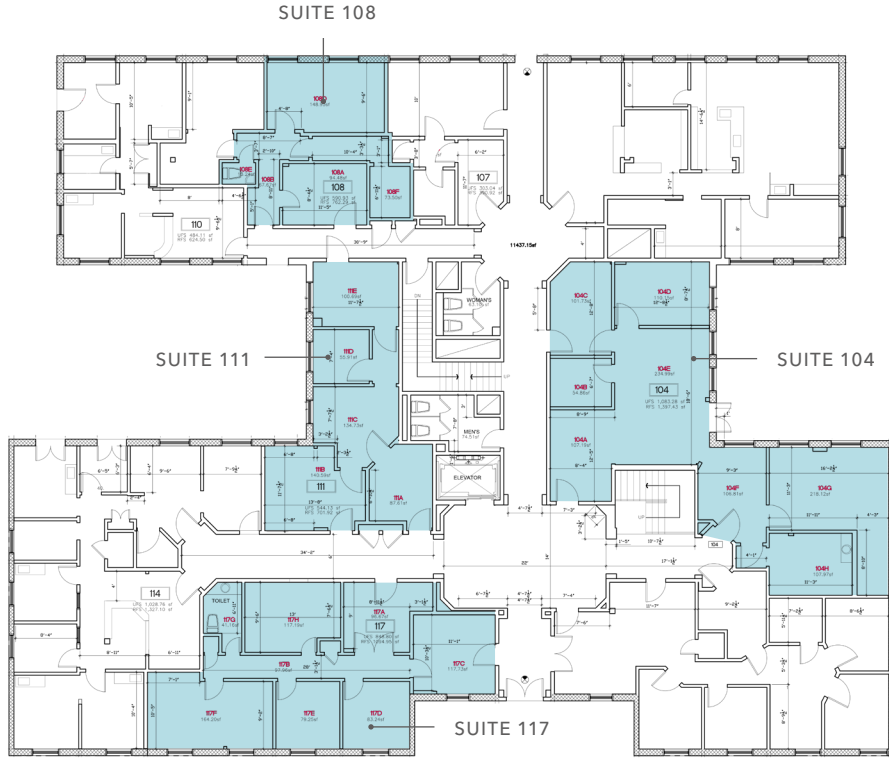
HELEN TRAN
424.653.1822
helen.tran@kidder.com
LIC N° 02238650

KIDDER.COM

This information supplied herein is from sources we deem reliable. It is provided without any representation, warranty, or guarantee, expressed or implied as to its accuracy. Prospective Buyer or Tenant should conduct an independent investigation and verification of all matters deemed to be material, including, but not limited to, statements of income and expenses. Consult your attorney, accountant, or other professional advisor.



First Floor



Second Floor

