

# CENTERVILLE MARKETPLACE II

## OFFERING MEMORANDUM

520 North Marketplace Drive, Centerville, UT 84014



**CHRIS FALK, CCIM, SIOR**  
cfalk@newmarkmw.com  
direct 801.499.6514  
[View Profile](#)

**BRAXTON WILLIE, CCIM**  
bwillie@newmarkmw.com  
direct 801.803.3334  
[View Profile](#)

**BRANDON WOOD, CCIM**  
brandon@northwoodgrp.com  
801.593.5500

**FULL SERVICE  
COMMERCIAL REAL ESTATE**  
1410 S University Park Blvd, Ste 120  
Clearfield, Utah 84015  
Office 801.578.5580  
[www.newmarkmw.com](http://www.newmarkmw.com)



# TABLE OF CONTENTS

**03** Investment  
Summary

**04** Rent Roll

**05** Property  
Summary

**06** Site Plans

**08** Floor Plans

**09** Surrounding  
Retail Map

**10** Photos

**12** Davis & Weber  
Counties Overview

# INVESTMENT SUMMARY

Newmark Mountain West and the Northwood Group are pleased to exclusively market the Centerville Marketplace Office Park for investment sale. Located 10 minutes north of Salt Lake City and 15 minutes from the Salt Lake City International Airport, direct freeway and West Davis Corridor visibility and access, and abundant amenities.



## PROPERTY HIGHLIGHTS

- 3- Story Building
- Number of Tenants: 8+
- Occupancy: 95%
- 50,970 SF
- Constructed in 2014
- 4:1000 Parking Ratio Allotted; 6:1000 Parking Ratio Cross-Access
- Total Parking Spaces: 538 (398 surface uncovered; 140 covered garage)
- Parking Garage:
  - 2 Stories
  - 140 Stalls (68 main level/72 second level)



LISTING PRICE

\$10,900,000



PRICE/SF

\$214



CAP RATE

8.48%



# RENT ROLL & INVESTMENT SUMMARY

RENT ROLL							
UNIT	TENANT	OCCUPIED SF	MONTHLY RENT	ANNUAL RENT	RATE/SF	LEASE EXPIRATION	NOTES
BUILDING 2							
100	VACANT	2,598	\$5,845.50	\$70,146	\$27.00		
120	B-MONEY MANAGEMENT	3,131	\$6,755	\$81,062	\$25.89	1/31/2021	
130	STATE OF UTAH DEPT OF ADMIN	5,865	\$13,436	\$161,229	\$27.49	11/30/2026	
140	EVERGREEN MARINE CORP	4,544	\$10,224	\$122,688	\$27.00	7/31/2032	
201	COLDWELL BANKER	3,485	\$7,986	\$95,838	\$27.50	APPROX 1/31/2031	IMPROVEMENTS UNDERWAY
202	SOUTH DAVIS PSYCHOLOGISTS	3,601	\$7,853	\$94,238	\$26.17	3/31/2031	
203	YOUTH HEALTH GROUP	4,416	\$10,304	\$123,648	\$28.00	APPROX 3/31/2031	IMPROVEMENTS UNDERWAY
205	RSN TECH	3,798	\$9,065	\$108,775	\$28.64	6/30/2026	
204	ADVANCED BRAIN TECHNOLOGIES	2,087	\$4,609	\$55,306	\$26.50	2/28/2028	
300	SECTURION SYSTEMS	17,445	\$41,403	\$496,834	\$28.48	6/30/2032	
		<b>50,970</b>	<b>\$117,480</b>	<b>\$1,409,762</b>	<b>\$27.27</b>		

## INVESTMENT SUMMARY

GROSS OPERATING INCOME	\$1,409,761.93
LESS MARKET VACANCY (5%)	\$(70,488.10)
LESS OP EXP'S (\$8.15 PSF)	\$(415,405.50)
NOI	\$923,868.33





# PROPERTY SUMMARY

## LOCATION:

520 North Marketplace Drive, Centerville, UT 84014

## LAND AREA:

Approx 2.121 acres

## BUILDING SF:

Approx 50,970 SF

## TRAFFIC COUNTS:

Legacy Highway: 43,172 ADT, I-15: 115,227 ADT

## YEAR BUILT:

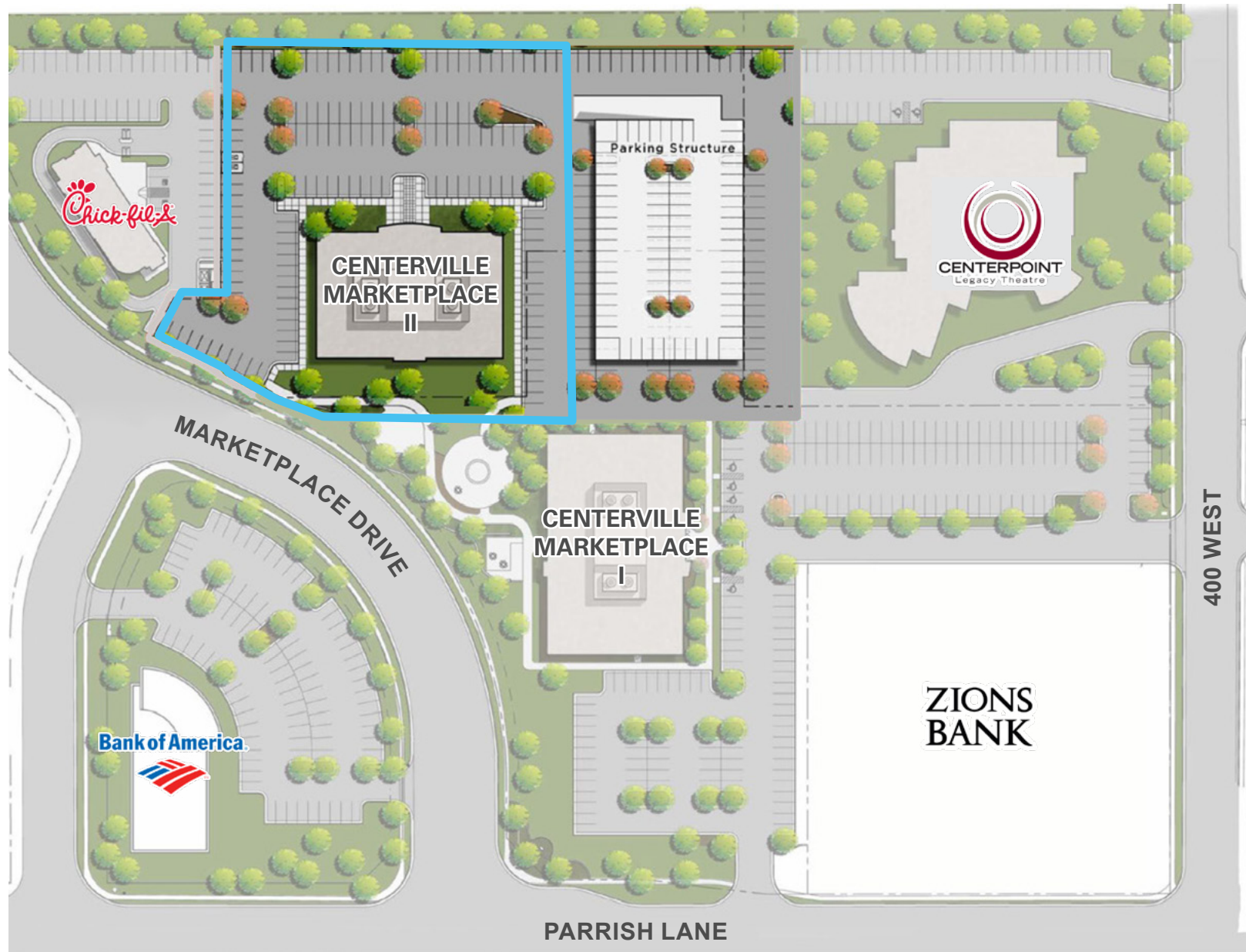
2014

## ZONING:

PB



# SITE PLAN

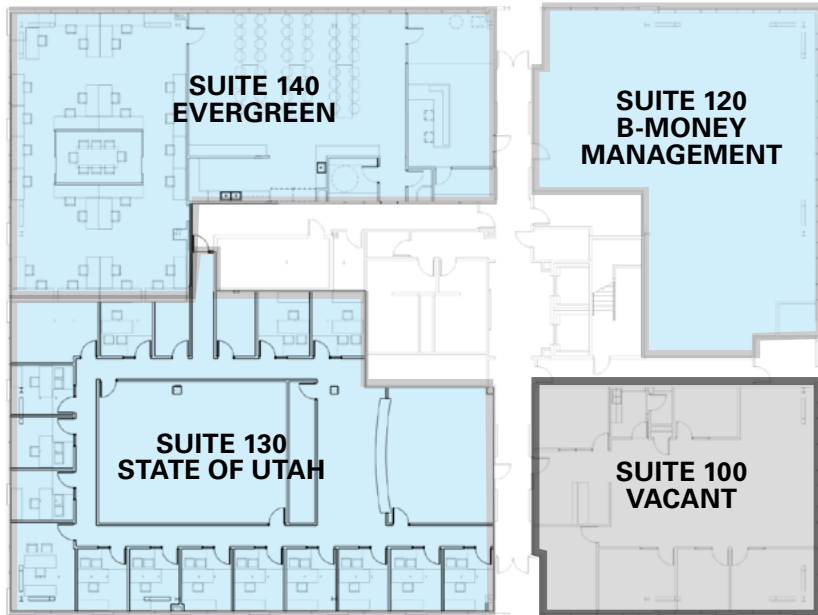




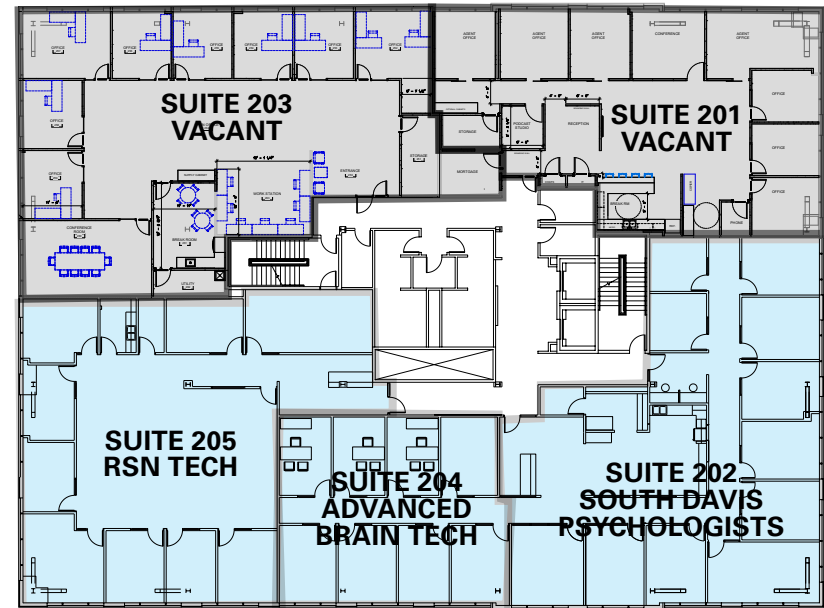


# FLOOR PLANS

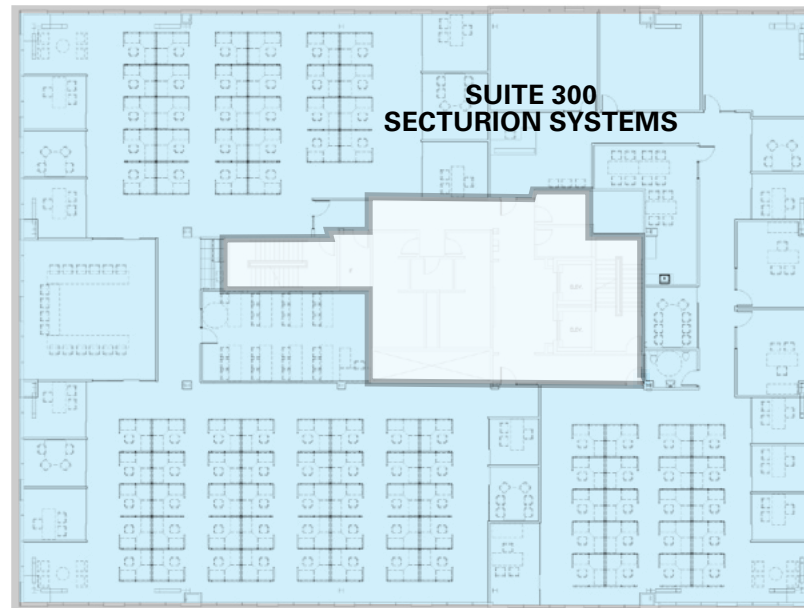
## 1ST FLOOR



## 2ND FLOOR

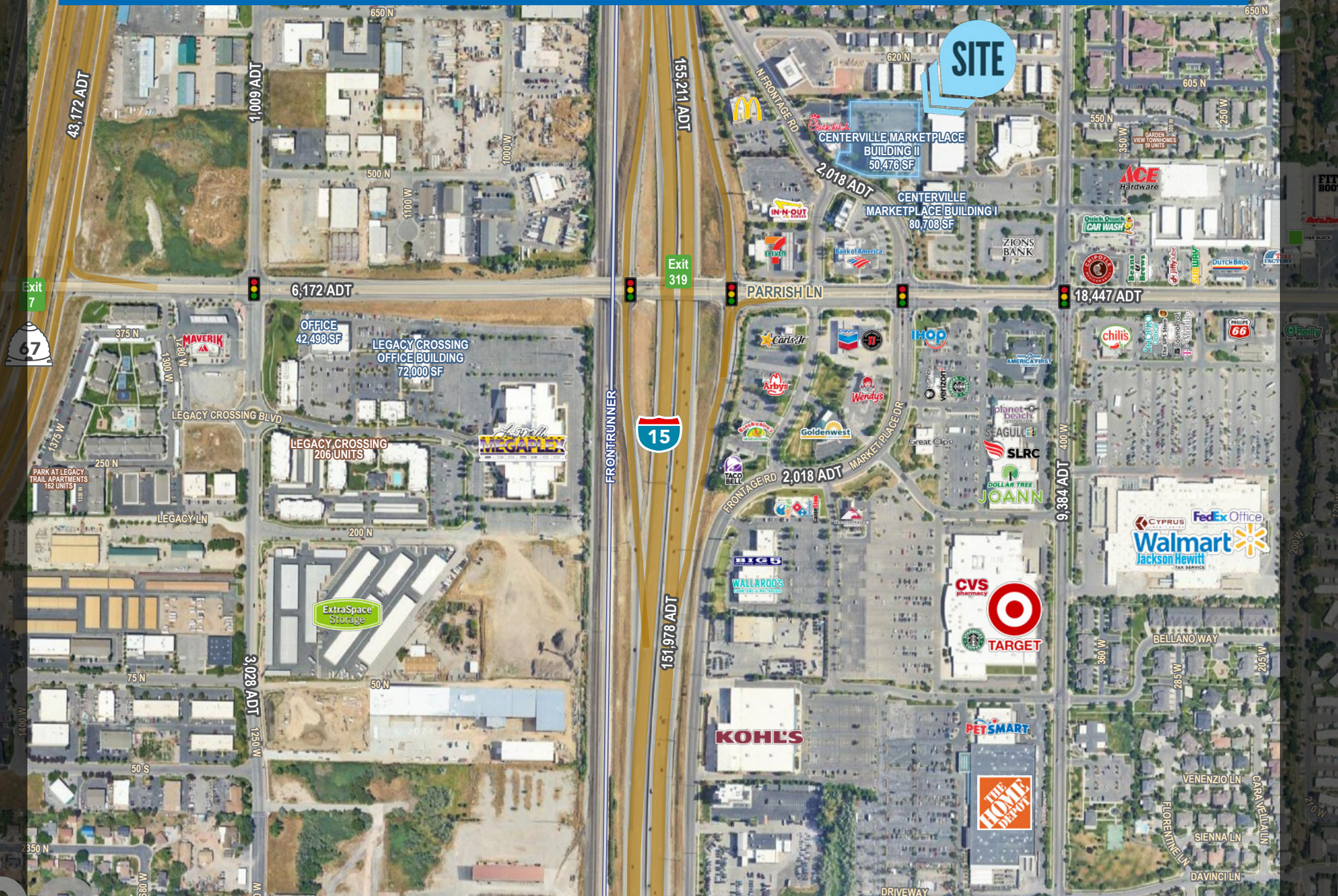


## 3RD FLOOR





# SURROUNDING RETAIL





# PROPERTY PHOTOS



**Newmark Mountain West | Centerville Marketplace II**

This statement with the information it contains is given with the understanding that all negotiations relating to the purchase, renting or leasing of the property described above shall be conducted through this office. The above information while not guaranteed has been secured from sources we believe to be reliable.



# DRONE PHOTOS



**Newmark Mountain West | Centerville Marketplace II**

This statement with the information it contains is given with the understanding that all negotiations relating to the purchase, renting or leasing of the property described above shall be conducted through this office. The above information while not guaranteed has been secured from sources we believe to be reliable.



# DAVIS & WEBER COUNTIES, UT

Davis and Weber Counties is a thriving economic hub characterized by a diverse and rapidly growing population, making it an attractive destination for businesses. The region boasts a strong economy driven by key sectors such as advanced manufacturing, aerospace, logistics, healthcare, and education, supported by a highly skilled workforce. Strategic access to major transportation routes, including I-15 and

proximity to Salt Lake City International Airport, enhances connectivity for businesses. With competitive costs for commercial real estate, a business-friendly environment, and a high quality of life, Davis and Weber Counties is an ideal location for companies seeking growth and expansion opportunities in Northern Utah.



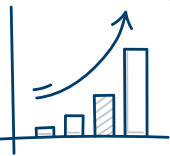
**647,037**  
Population



**\$100,343**  
Median Household  
Income



**\$124,914**  
Average Household  
Income



**0.8%**  
Projected Annual  
Growth Rate



**18,449**  
Total Businesses



**175,350**  
Total Employees





# CONFIDENTIALITY & DISCLOSURE

Newmark Mountain West has been retained on an exclusive basis to market the property described as 520 N. Marketplace Dr., Centerville, UT 84014. Broker has been authorized by seller of the property to prepare and distribute the enclosed information for the purpose of soliciting offers to purchase from interested parties. More detailed financial, title and tenant lease information may be made available upon request following the mutual execution of a letter of intent or contract to purchase between the Seller and the prospective purchaser. You are invited to review this opportunity and make an offer to purchase based upon your analysis. If your offer results in the Seller choosing to open negotiations with you, you will be asked to provide financial references. The eventual purchaser will be chosen based upon an assessment of price, terms, ability to close the transaction and such other matters as the Seller deems appropriate.

The Material is intended solely for the purpose of soliciting expressions of interest from qualified investors for the acquisition of the Property. The Material is not to be copied and /or used for any other purpose or made available to any other person without the express written consent of Broker or Seller. The Material does not purport to be all-inclusive or to contain all of the information

that a prospective buyer may require. The information contained in the material has been obtained from the Seller and other sources and has not been verified by the Seller or its affiliates, agents, representatives, employees, parents, subsidiaries, members, managers, partners, shareholders, directors, or officers, makes any representation or warranty regarding such pro forma. Purchaser must make its own investigation of the Property and any existing or available financing, and must independently confirm the accuracy of the projections contained in the pro forma.

Seller reserves the right, for any reason, to withdraw the Property from the Market. Seller has no obligation, express or implied, to accept any offer. Further, Seller has no obligation to sell the Property unless and until the Seller executes and delivers a signed agreement of purchase and sale on terms acceptable to the Seller, in its sole discretion. By submitting an offer, a purchaser will be deemed to have acknowledged the foregoing and agreed to release Seller and Broker from any liability with respect thereto.

Property walk-throughs are to be conducted by appointment only. Contact Broker for additional information.



# CENTERVILLE MARKETPLACE II

## OFFERING MEMORANDUM

520 N Marketplace Dr, Centerville, UT 84014

**NEWMARK**



**MOUNTAIN WEST**



**the  
northwood  
group**

**CHRIS FALK, CCIM, SIOR**

cfalk@newmarkmw.com

direct 801.499.6514

[View Profile](#)

**BRAXTON WILLIE, CCIM**

bwillie@newmarkmw.com

direct 801.803.3334

[View Profile](#)

**BRANDON WOOD, CCIM**

brandon@northwoodgrp.com

801.593.5500

**FULL SERVICE COMMERCIAL REAL ESTATE**

1410 S University Park Blvd, Ste 120, Clearfield, Utah 84015

Office 801.578.5580 | [www.newmarkmw.com](http://www.newmarkmw.com)