



COMMERCIAL REALTY SOLUTIONS

**For Lease
Warehouse Space**



ELK RIVER Warehouse Space

Lease Rate: \$7.00/psf NNN

Space Available: 8,892/sf

15725 Jarvis Street, Elk River, MN 55330

Eric O'Brien, Broker
612.281.4163

EObrien@Crs-Mn.com

Wayne Elam, Broker
763.229.4982

WElam@Crs-Mn.com

The information contained herein was obtained from sources believed to be reliable, but Commercial Realty Solutions has not verified nor has any knowledge regarding the accuracy of information and makes no representation or warranty concerning the same. Therefore, Commercial Realty Solutions disclaims all liabilities in connection with any inaccuracies or incompleteness. This marketing material is for the implicit use by Commercial Realty Solutions for the marketing of their listings and is not for use by other brokerage(s).

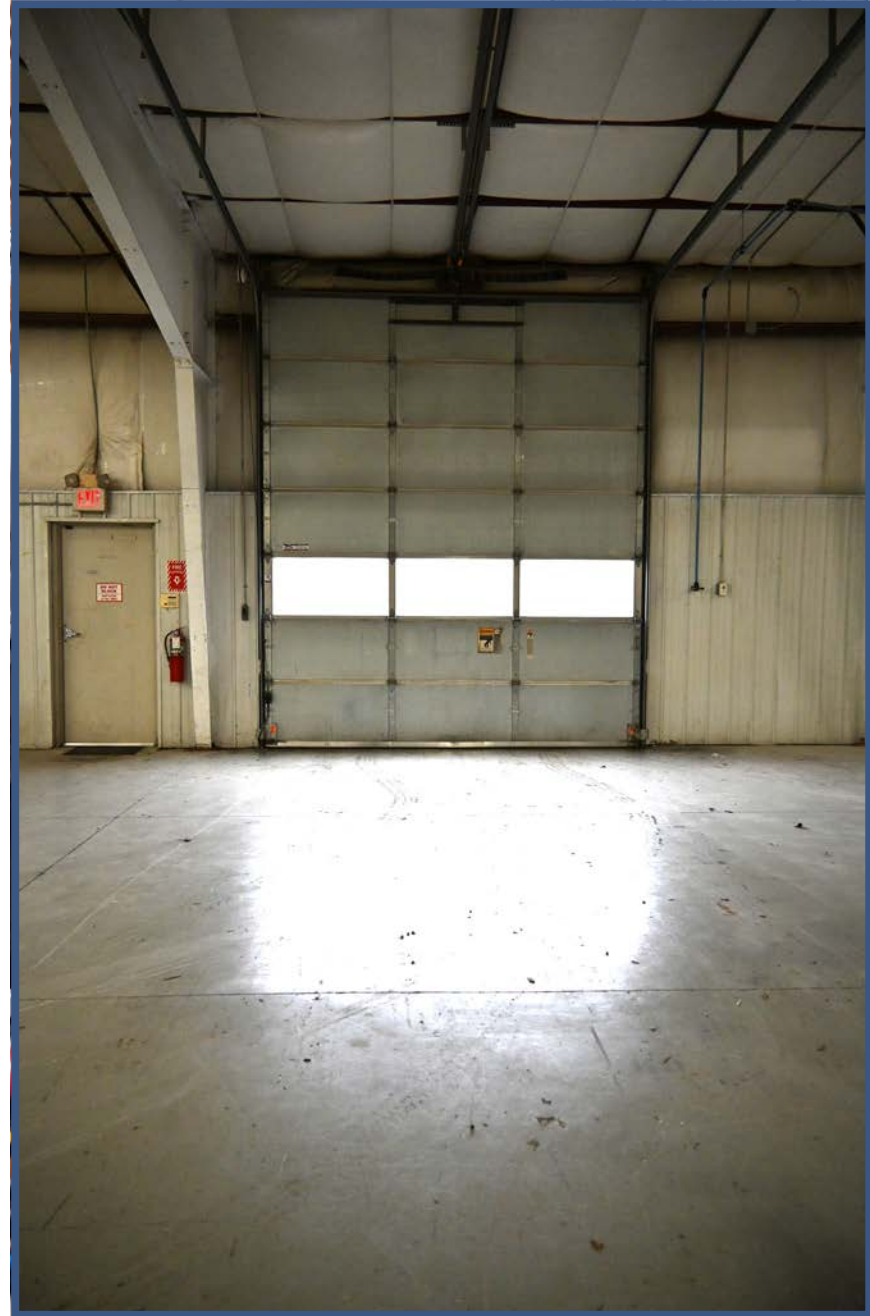
PROPERTY OVERVIEW

15725 Jarvis Street NW, Elk River, MN

Lease Rate
\$7.00/psf NNN

Operating Expenses: \$3.60

Building Size	20,107/sf
Space Available	8,892/sf
Lot Size	1.89 Acres
County	Sherburne
PID	75-00805-0115
2026 Taxes	\$29,438.00
Zoned	PUD Planned Unit Development
Tenant	Multi-Tenant
Number Floors	One (1)
Parking Spaces	32



The information contained herein was obtained from sources believed to be reliable, but Commercial Realty Solutions has not verified nor has any knowledge regarding the accuracy of information and makes no representation or warranty concerning the same. Therefore, Commercial Realty Solutions disclaims all liabilities in connection with any inaccuracies or incompleteness. This marketing material is for the implicit use by Commercial Realty Solutions for the marketing of their listings and is not for use by other brokerage(s).



BUSINESS LOCATION

3 Miles East of 101/169 Interchange

Easy Access to US Hwy 10

Two (2) Blocks North of US Hwy 10

Businesses in the Area Include:

Metro Truck & Equipment, Furniture & Things, BMS Cat, EH Renner & Sons, Sales Ramp, Copart, Name Brand Self Storage and more...

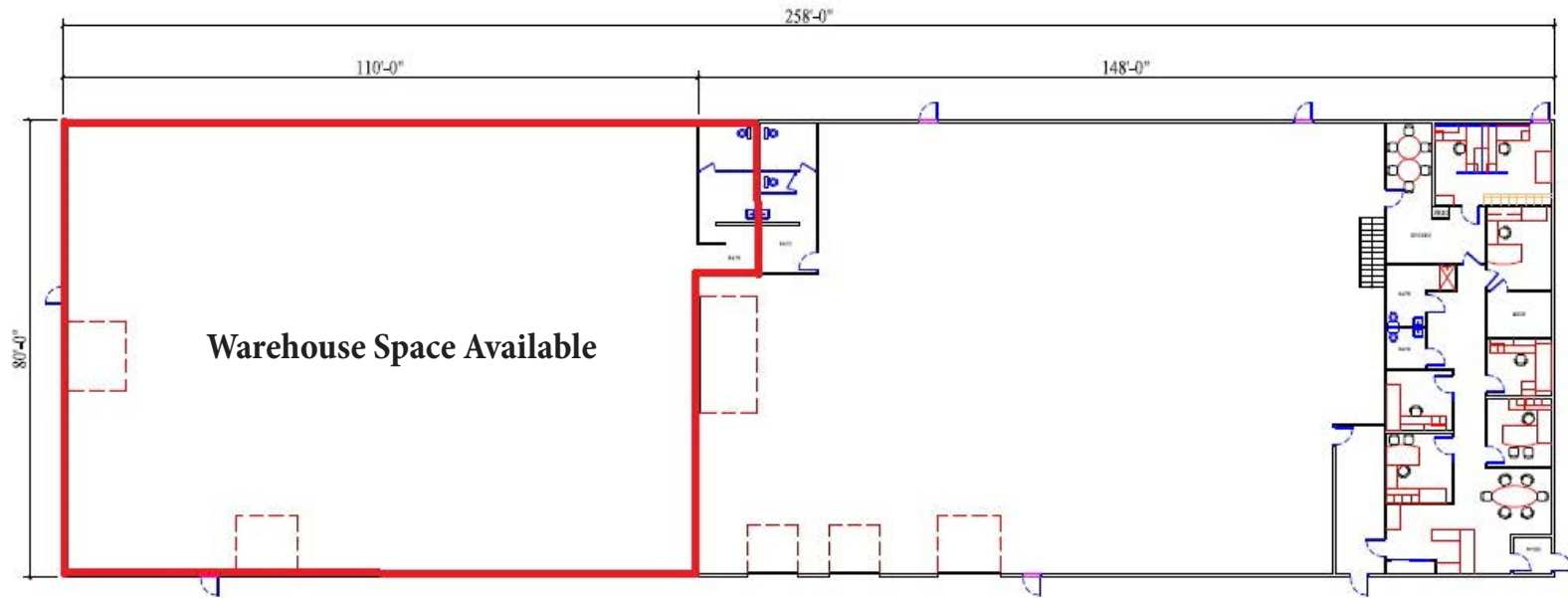
TRAFFIC COUNTS - 2025

* US Highway 10 - 32,887 VPD

* Jarvis Street NW - 1,538 VPD



FLOOR PLAN



PROPERTY INFORMATION

- * HVAC: Two (2) Ceiling Mounted Heaters
- * Electrical: 3-Phase
- * Clear Height: 14'
- * Overhead Doors: Two (2) - 12' x 14' and 8' x 10'
- * Drive-In: Two (2)
- * Warehouse has One (1) Restroom
- * Gas & Electric is Metered Separately
- * Separate Exterior Entry to Warehouse
- * Ample Exterior Parking
- * Great Warehouse Space
- * Precast Walls

INTERIOR



EXTERIOR

