

INDUSTRIAL FOR LEASE



8621 BAREFOOT INDUSTRIAL RD

RALEIGH | NORTH CAROLINA, 27617

KARAH JENNINGS MCCONNELL
Executive Vice President, Principal
O 919.576.2502
C 919.817.0705
kjennings@lee-associates.com

SCOTT HADLEY
Vice President, Principal
O 919.576.2504
C 919.906.0524
shadley@lee-associates.com

 **LEE &
ASSOCIATES**
COMMERCIAL REAL ESTATE SERVICES
RALEIGH • DURHAM • WILMINGTON

PROPERTY SUMMARY

8621 Barefoot Industrial Road is a $\pm 8,750$ SF industrial property available for lease in Raleigh, NC, conveniently located off Glenwood Avenue and Ebenezer Church Road.

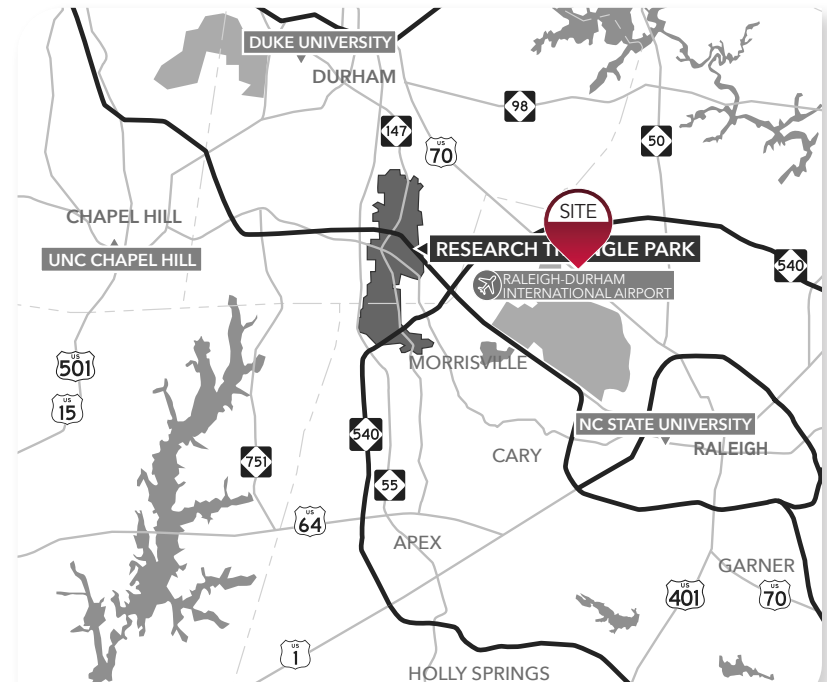
The offering includes 3,750 SF of fully conditioned upper-level industrial space and 3,750 SF of lower-level storage. The building features shared dock-high and drive-in loading with adjacent space, providing efficient access for warehouse and distribution users. The property is well-suited for a variety of industrial users seeking functional space in a desirable Northwest Raleigh location.

HIGHLIGHTS

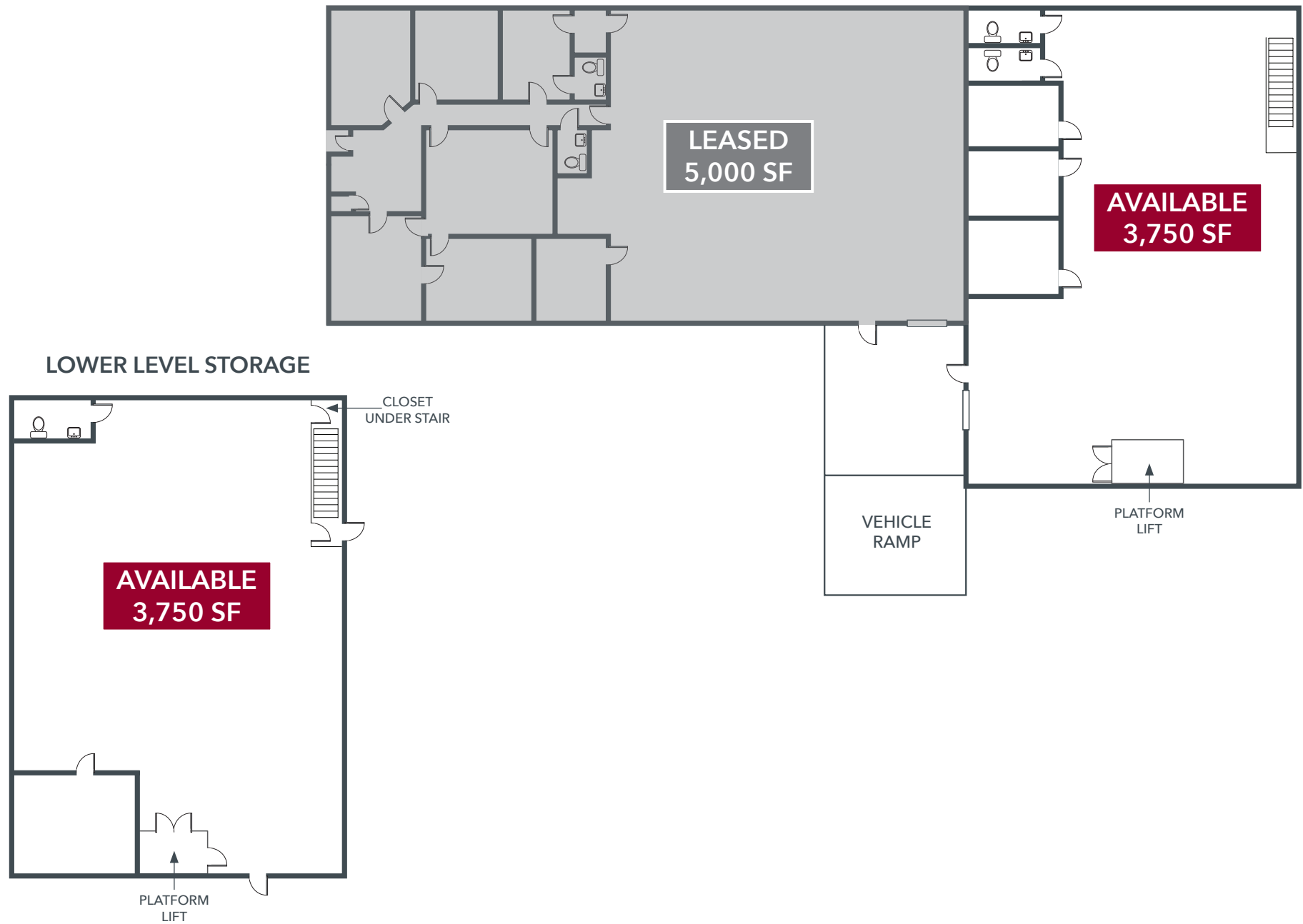
- » $\pm 7,500$ SF Industrial Space Available for Lease
- » 3,750 SF Upper Level | 3,750 SF Lower Level Storage
- » Fully Conditioned Warehouse with Backup Generator
- » Shared Dock-High and Drive-In Door
- » Gas Heat
- » Convenient Access to Glenwood Avenue and Ebenezer Church Road
- » Traffic Counts: 46,000 VPD on Glenwood Ave | 7,700 VPD on Ebenezer Church Rd

LEASE RATE

- » Upper Level: \$16/SF, NNN
- » Lower Level Storage: \$9/SF, NNN
- » TICAM: \$2.98/SF (estimate)



FLOOR PLAN



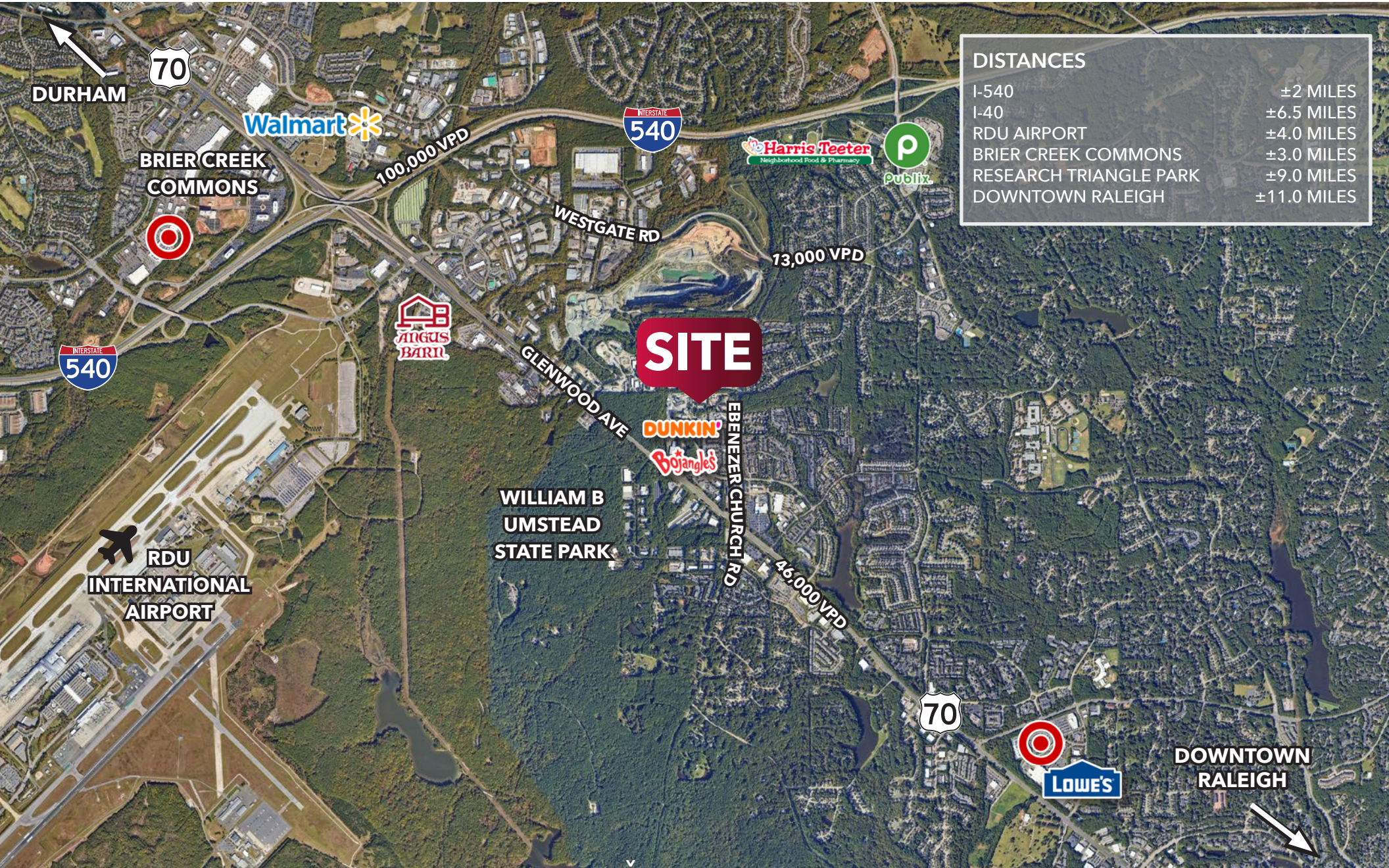
PHOTOS



PHOTOS

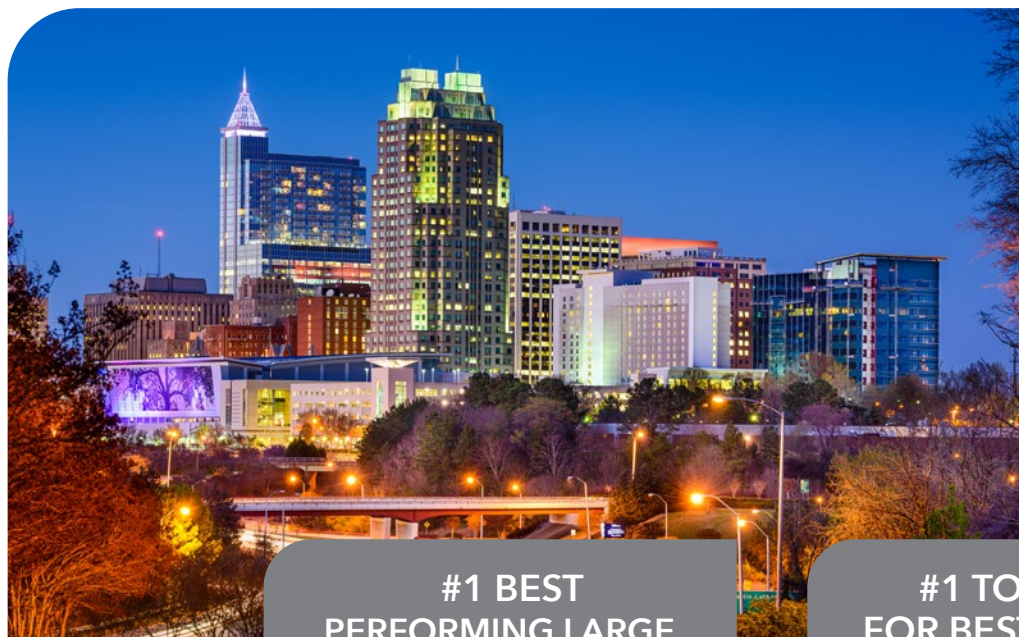


AREA OVERVIEW



DEMOGRAPHICS

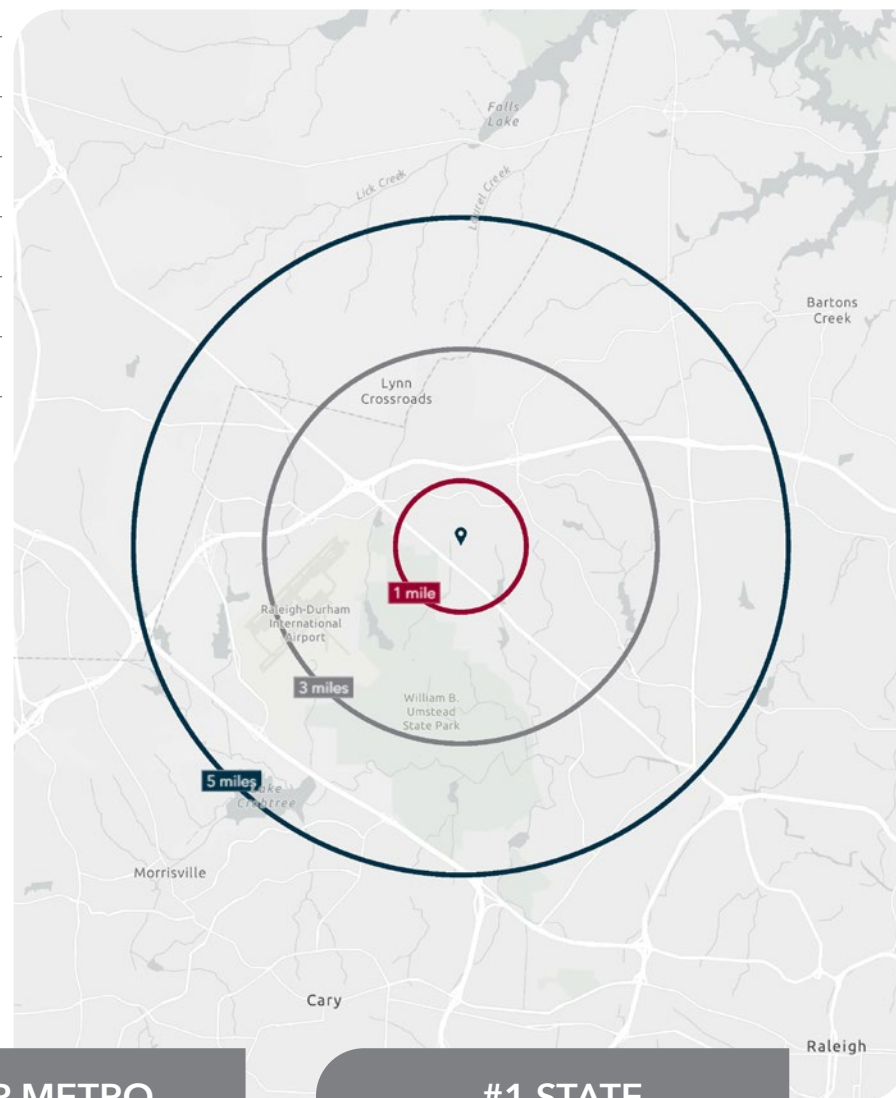
	1 MILE	3 MILES	5 MILES
Population (2025)	6,462	52,187	124,143
Daytime Population	10,418	51,372	129,873
# of Businesses	522	2,076	5,147
# of Employees	6,119	22,304	56,257
Average Household Income	\$154,369	\$147,472	\$157,109
Average Home Value	\$593,227	\$589,692	\$615,843
Bachelor's Degree or Higher	71.4%	66.1%	68.3%



**#1 BEST
PERFORMING LARGE
CITY (RALEIGH)**
Milken Institute, 2025

**#1 TOP METRO
FOR BEST BUSINESS
CLIMATE (RALEIGH)**
Business Facilities, 2025

**#1 STATE
FOR BUSINESS
(NORTH CAROLINA)**
CNBC, 2025



KARAH JENNINGS MCCONNELL
Executive Vice President, Principal
O 919.576.2502
C 919.817.0705
kjennings@lee-associates.com

SCOTT HADLEY
Vice President, Principal
O 919.576.2504
C 919.906.0524
shadley@lee-associates.com



**LEE &
ASSOCIATES**

COMMERCIAL REAL ESTATE SERVICES
RALEIGH • DURHAM • WILMINGTON

100 Walnut Street | Cary, NC 27511 | 919.576.2500 | lee-associates.com/raleigh

All information furnished regarding property for sale, rental or financing is from sources deemed reliable, but no warranty or representation is made to the accuracy thereof and same is submitted to errors, omissions, change of price, rental or other conditions prior to sale, lease or financing or withdrawal without notice. No liability of any kind is to be imposed on the broker herein.