

FOR LEASE

TURN-KEY
RENOVATIONS
AVAILABLE



HIGH-EXPOSURE SECOND FLOOR OFFICE SPACE

5405 - 99 STREET | EDMONTON, ALBERTA

ONLY TWO SECOND FLOOR OFFICES REMAINING: ± 1,244 SF AND 2,203 SF

- Second floor office space with immediate availabilities, perfect for smaller professional firms or any light office user: common lobby with way finding, updated common areas with LED lights, flooring, paint, tenant-specific signs, and renovated common area washrooms
- Professionally managed by a hands-on, responsive and proactive Landlord who's continually choosing to invest in their building
- Outstanding visibility along 99th Street with over 26,900 VPD (vehicles per day), the site also boasts two access points: one off 99th Street, the other off 54th Ave, both allow for full building drive-around access
- Units are shell space and are ready for tenant improvements.

Darin Luciw, *Senior Associate*
Investment Sales & Leasing
780 573 0830
darin@hcrgroup.ca

Scott Hughes, *Broker/Owner*
Investment Sales & Leasing
780 915 7895
scott@hcrgroup.ca

www.hcrgroup.ca | 780.757.1010

Hughes Commercial Realty Group
#302, 10171 Saskatchewan Drive
Edmonton, AB T6E 4R5



HUGHES
COMMERCIAL
REALTY GROUP

FOR LEASE | HIGH EXPOSURE SECOND FLOOR OFFICE SPACE



Details

ZONING

BE - BUSINESS EMPLOYMENT

PARKING

SCRAMBLE
FIRST COME, FIRST SERVE

FIBRE OPTICS

YES

AIR CONDITIONING

YES

TENANT IMPROVEMENT
ALLOWANCE

NEGOTIABLE

AVAILABILITY

IMMEDIATE

IDEAL USES

- Offices for accountants, architects, financial institutions, employment or call centres, and real estate, law, and insurance firms.
- Medical and dental offices, health clinics and counseling services.

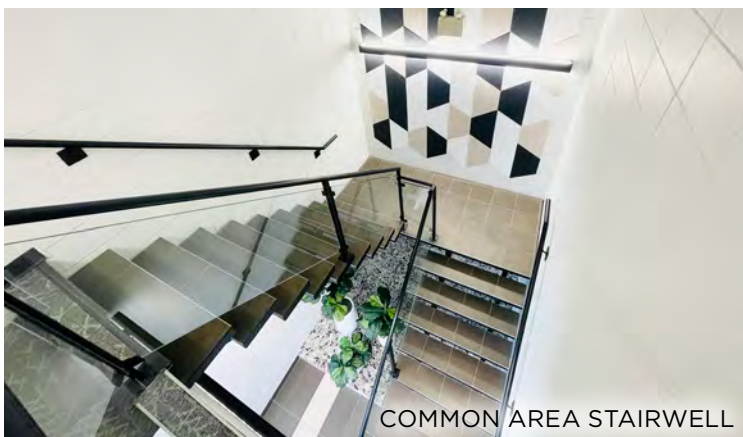
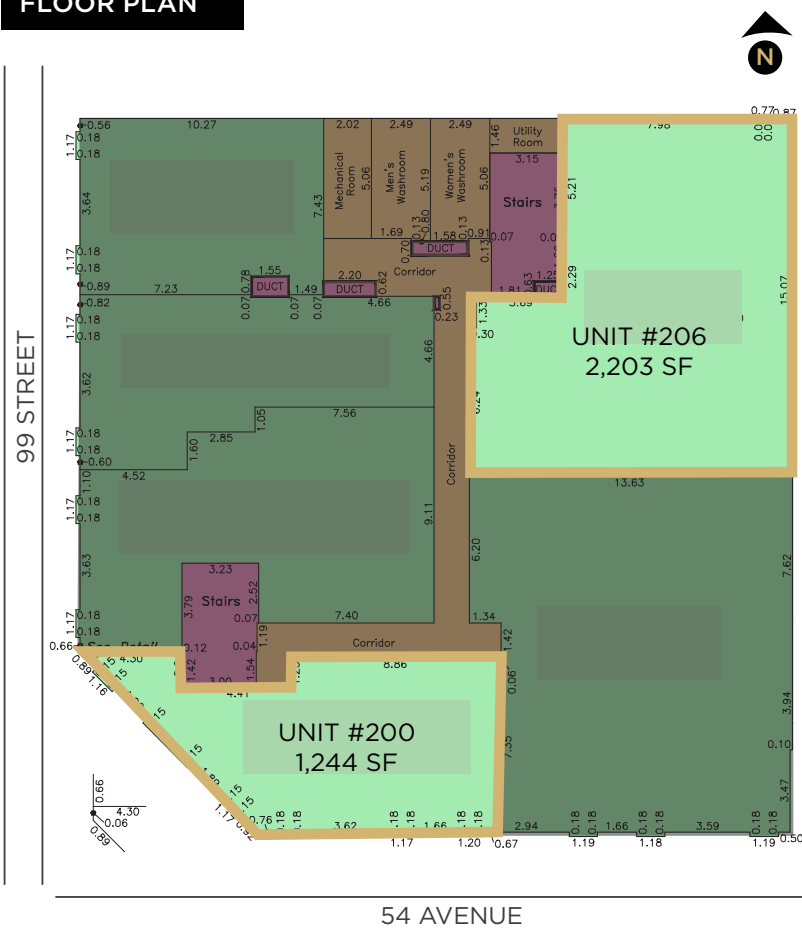
Available Units

UNIT #	SIZE	DESCRIPTION	STARTING GROSS LEASE RATE
200	1,244 SF	SHELL SPACE	\$18.00 PSF
201	1,496 SF	SHELL SPACE	LEASED
206	2,203 SF	SHELL SPACE	\$14.00 PSF
208	1,077 SF	SHELL SPACE W/KITCHENETTE	LEASED

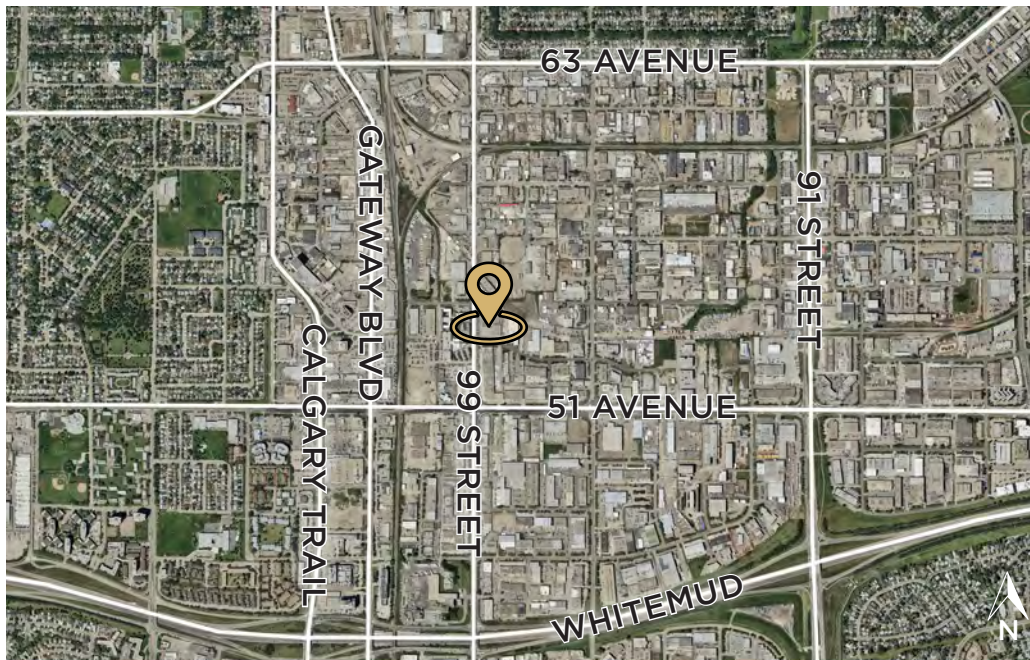


FOR LEASE | HIGH EXPOSURE SECOND FLOOR OFFICE SPACE

FLOOR PLAN



FOR LEASE | HIGH EXPOSURE SECOND FLOOR OFFICE SPACE



Darin Luciow, Senior Associate
Investment Sales & Leasing
780 573 0830
darin@hcrgroup.ca

Scott Hughes, Broker/Owner
Investment Sales & Leasing
780 915 7895
scott@hcrgroup.ca

The information contained herein was obtained from sources deemed to be reliable and is believed to be true; it has not been verified and as such, cannot be warranted nor form a part of any future contract. All measurements need to be independently verified by the Tenant.

www.hcrgroup.ca | 780.757.1010

Hughes Commercial Realty Group
#302, 10171 Saskatchewan Drive
Edmonton, AB T6E 4R5



HUGHES
COMMERCIAL
REALTY GROUP