



WALDROP PROPERTIES, LLC

Commercial Real Estate Solutions

FOUNDRY  
COMMERCIAL

- **Offering Price:** Unpriced,  
Please Contact Broker
- **Availability:**  
Building/Property To Be  
Vacated By December 31, 2025
- **Square Footage:**  
Approximately 30,357  
Square Feet
- Showroom Area:**  
Approximately 2,350  
Square Feet
- Second Floor Office:**  
Approximately 1,140  
Square Feet
- **Building Plan:**  
See Below/Attached
- **Acreage:** 1.21 Acres
- **Site Plan:** See Below/Attached
- **Aerial:** See Below/Attached
- **Parcel ID:**  
33-21-30-300-030B-0000
- **Zoning:**  
CS (Commercial Service)
- **Sprinkler System:** Wet System
- **Power:** 3-Phase
- **Dock Doors:**  
3, 10X11  
1, 8X10
- **Drive In Doors:**  
2, 12x12  
1, 14x14
- **Warehouse Ceiling Heights:**  
Range From 11'7" To 23'  
At The Peak

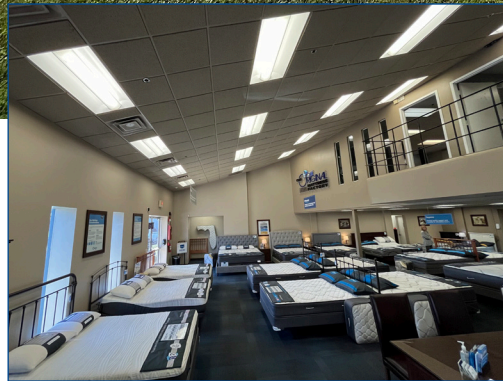
3700 Computer Dr., Suite 240  
Raleigh, NC 27609  
Office: 919-645-1605  
Fax: 919-645-1606

[www.waldropproperties.com](http://www.waldropproperties.com)

# For Sale

## Freestanding Showroom/Warehouse Building +/- 30,357 Square Feet

1785 SR 436, Winter Park, Florida 32792



*for more information contact*

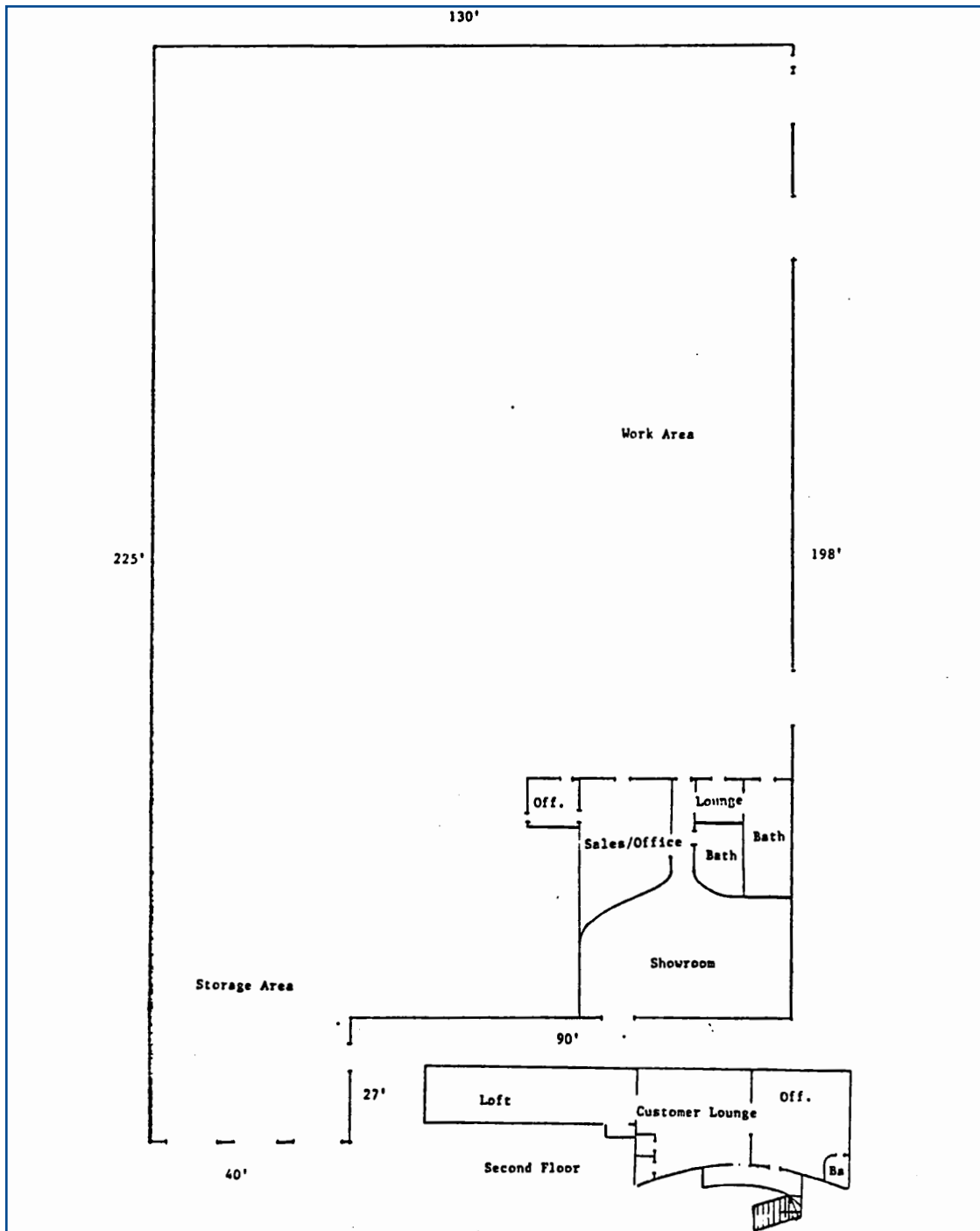
Michael Waldrop at 919-645-1605  
[michael@wp-cre.com](mailto:michael@wp-cre.com)

or Charles Attaway at 407-963-4064  
[charles.attaway@foundrycommercial.com](mailto:charles.attaway@foundrycommercial.com)

The information contained herein has been obtained from sources deemed reliable, however, no representation or warranty, either expressed or implied, is made as to its completeness or accuracy. Prospective tenants should make their own investigations to ascertain the accuracy of the material contained herein. This offering is subject to change, correction or withdrawal.

# 1785 SR 436

Winter Park, Florida 32792



## Building Plan

*Disclaimer: Listing Agency makes no representations as to the accuracy of the building plan. Buyers are responsible for confirming the configuration and square footage of the space.*

*for more information contact*

Michael Waldrop at 919-645-1605  
michael@wp-cre.com

or Charles Attaway at 407-963-4064  
charles.attaway@foundrycommercial.com

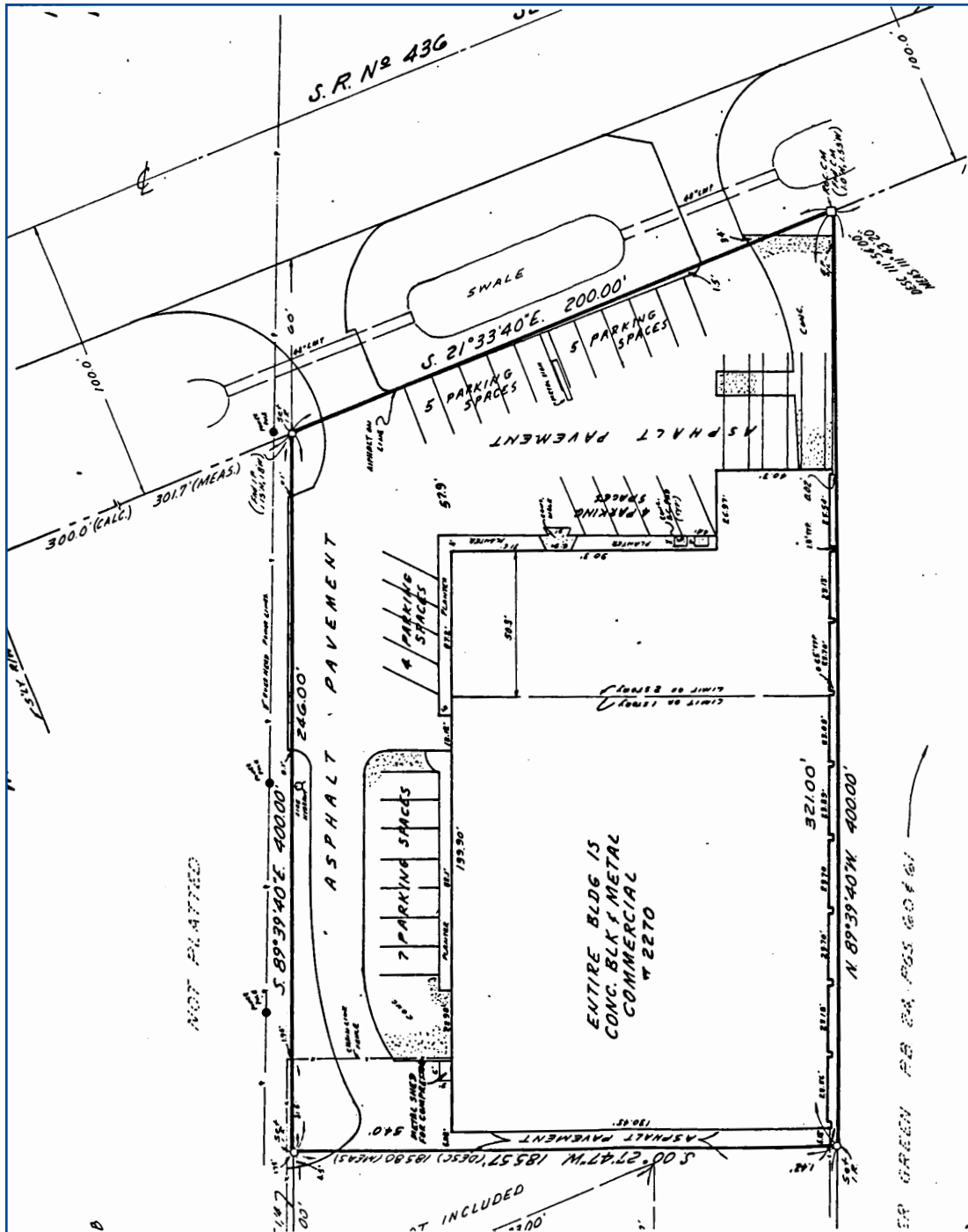


WALDROP PROPERTIES, LLC  
Commercial Real Estate Solutions

[www.waldropproperties.com](http://www.waldropproperties.com)

# 1785 SR 436

Winter Park, Florida 32792



## Site Plan

*Disclaimer: Listing Agency makes no representations as to the accuracy of the site plan. Buyers should have a survey performed and verify all information provided herein.*

*for more information contact*

Michael Waldrop at 919-645-1605  
michael@wp-cre.com

or Charles Attaway at 407-963-4064  
charles.attaway@foundrycommercial.com



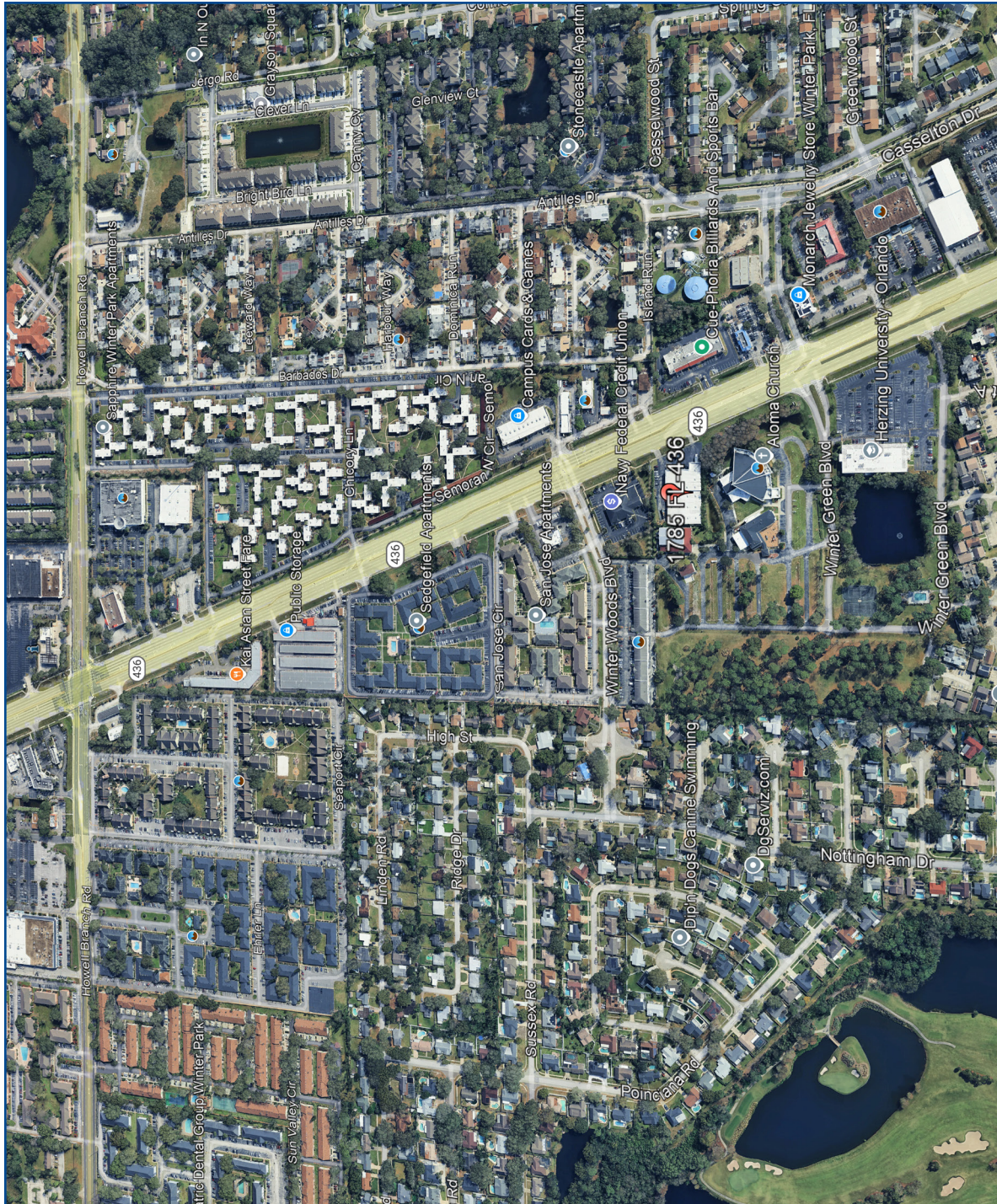
WALDROP PROPERTIES, LLC  
Commercial Real Estate Solutions

[www.waldropproperties.com](http://www.waldropproperties.com)



# 1785 SR 436

## Winter Park, Florida 32792



Aerial

*for more information contact*

Michael Waldrop at 919-645-1605

michael@wp-cre.com

or Charles Attaway at 407-963-4064

charles.attaway@foundrycommercial.com



WALDROP PROPERTIES, LLC

Commercial Real Estate Solutions

[www.waldropproperties.com](http://www.waldropproperties.com)