

# OFFICE/WAREHOUSE SPACE FOR LEASE

Highland Village, TX



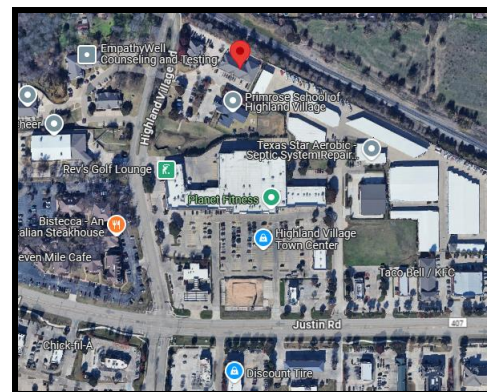
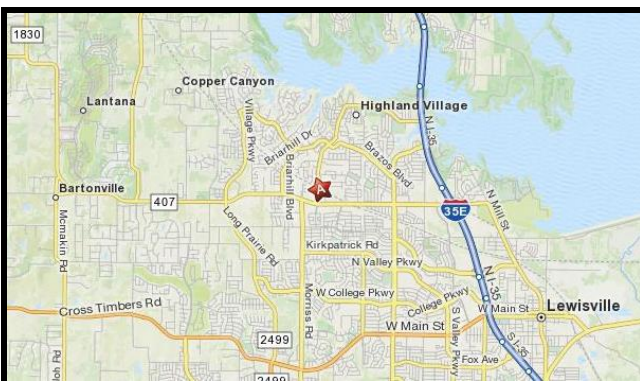
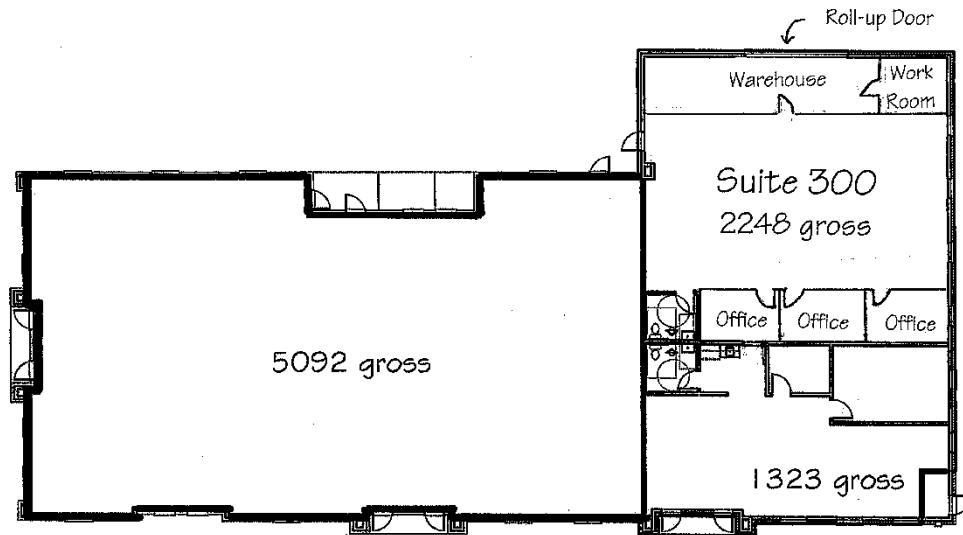
- Location:** SUITE 300 - 2040 Highland Village Rd., Highland Village.  
Close to FM 407 – Restaurants – Fast Food!
- Size:** 2,248 SF – 3 Offices (12' x 12')  
Open Area – 25' x 47' (Cubicles available to purchase)  
Warehouse – 8' x 35' - Roll-up Door + Work Room
- Rent:** \$14.75 per square-foot + NNN's.
- Available:** NOW!

For further information contact: Rich Muller



**Vintage Realty**  
2980 Long Prairie Rd., Suite D  
Flower Mound, TX 75022  
972/355-0669 or Fax 972/355-5477  
E-mail: [Rich@VintageRealty.net](mailto:Rich@VintageRealty.net) or [www.VintageRealty.net](http://www.VintageRealty.net)

This information is believed to be accurate, but no representation or warranty, express or implied, as to its accuracy or completeness is made by any party. The presentation of this property is submitted subject to errors, omissions, change of price or prior sale or lease or withdrawal without notice.



This information is believed to be accurate, but no representation or warranty, express or implied, as to its accuracy or completeness is made by any party. The presentation of this property is submitted subject to errors, omissions, change of price or prior sale or lease or withdrawal without notice.