



Port of Savannah
Garden City Terminal



Terminal & Container Depot Yard **For Lease**

4 Telfair Place, Garden City, GA 31415

- ±2.7 acres
- Gravel yard
- Equipped with concrete landing pads
- Fully fenced
- Zoned Heavy Industrial - ability to stack
- Parcel No. 6073701012
- ±2.8 Miles to GPA's Ocean Terminal
- ±3.6 Miles to GPA's Garden City Terminal
- **Available immediately**

Lease Rate:

Please Inquire

Zachary Zakas

Associate

+1 912 417 0009

zachary.zakas@colliers.com

Sebastian Findlay, SIOR

Principal

+1 912 483 6160

sebastian.findlay@colliers.com



Colliers | Savannah

545 E York Street

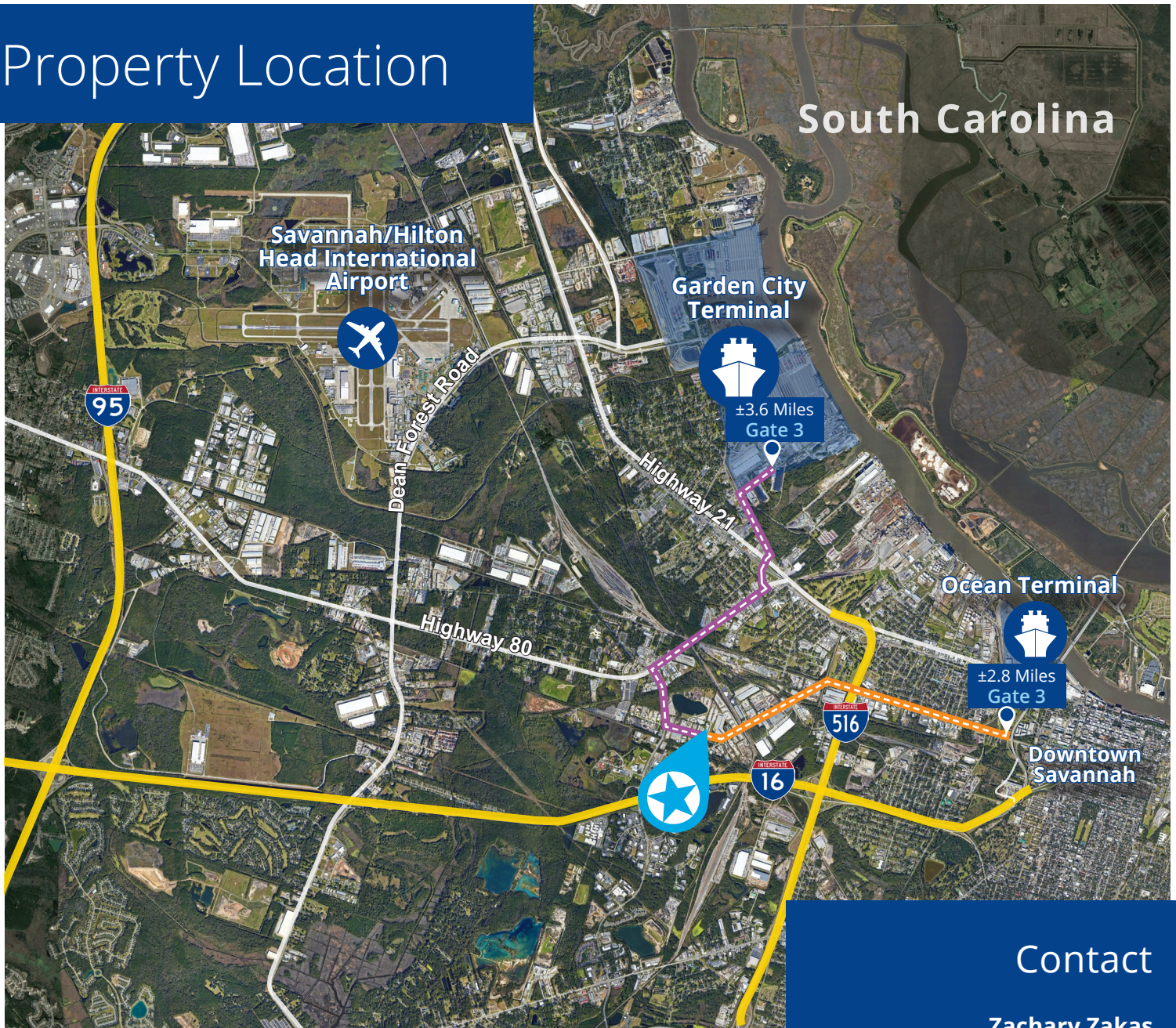
Savannah, GA 31401

Main: +1 912 233 7111

colliers.com/savannah



Property Location



South Carolina

Savannah/Hilton
Head International
Airport

Garden City
Terminal

Ocean Terminal

Downtown
Savannah

Distances

Interstate 16	0.9 Miles
Interstate 516	1.3 Miles
Ocean Terminal	2.8 Miles
Garden City Terminal	3.6 Miles
Interstate 95	5.9 Miles
Savannah/HH Airport	8.8 Miles

Contact

Zachary Zakas

Associate

+1 912 417 0009

zachary.zakas@colliers.com

Sebastian Findlay, SIOR

Principal

+1 912 483 6160

sebastian.findlay@colliers.com



Colliers | Savannah

545 E York Street

Savannah, GA 31401

Main: +1 912 233 7111

colliers.com/savannah

This document has been prepared by Colliers International for advertising and general information only. Colliers International makes no guarantees, representations or warranties of any kind, expressed or implied, regarding the information including, but not limited to, warranties of content, accuracy and reliability. Any interested party should undertake their own inquiries as to the accuracy of the information. Colliers International excludes unequivocally all inferred or implied terms, conditions and warranties arising out of this document and excludes all liability for loss and damages arising there from. This publication is the copyrighted property of Colliers International and/or its licensor(s). ©2025. All rights reserved.