

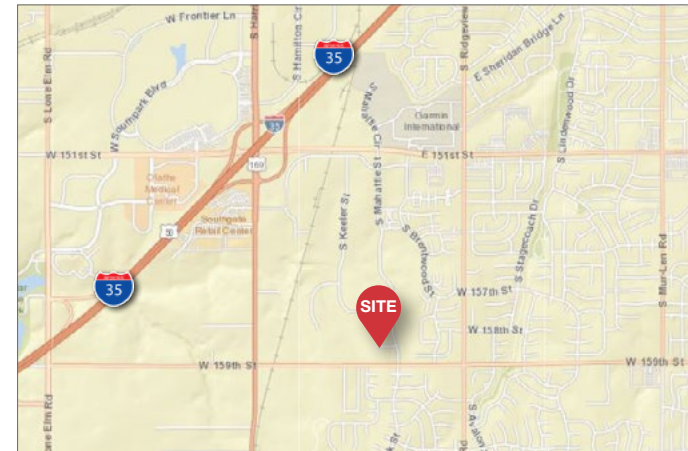


18889 W 158th Street

Olathe, Kansas

Property Features

- ± 5,625 SF
- Excellent open office/showroom space
- Drive-In loading
- Excellent visibility from 159th Street
- Quick access to I-35
- Nearby amenities, restaurants, QuikTrip
- 2006 Modern Construction
- Lease rate: \$5,132.81 per month plus CAM



For more information:

Evan Calkins

+1 913 890 2017
evan@nai-heartland.com

Logan Rose

+1 913 890 2013
lrose@nai-heartland.com

NO WARRANTY OR REPRESENTATION, EXPRESS OR IMPLIED, IS MADE AS TO THE ACCURACY OF THE INFORMATION CONTAINED HEREIN, AND THE SAME IS SUBMITTED SUBJECT TO ERRORS, OMISSIONS, CHANGE OF PRICE, RENTAL OR OTHER CONDITIONS, PRIOR SALE, LEASE OR FINANCING, OR WITHDRAWAL WITHOUT NOTICE, AND OF ANY SPECIAL LISTING CONDITIONS IMPOSED BY OUR PRINCIPALS NO WARRANTIES OR REPRESENTATIONS ARE MADE AS TO THE CONDITION OF THE PROPERTY OR ANY HAZARDS CONTAINED THEREIN ARE ANY TO BE IMPLIED.

4400 College Blvd, Suite 170
Overland Park, KS 66211
+1 913 362 1000
nai-heartland.com



For more information:

Evan Calkins

+1 913 890 2017 • evan@nai-heartland.com

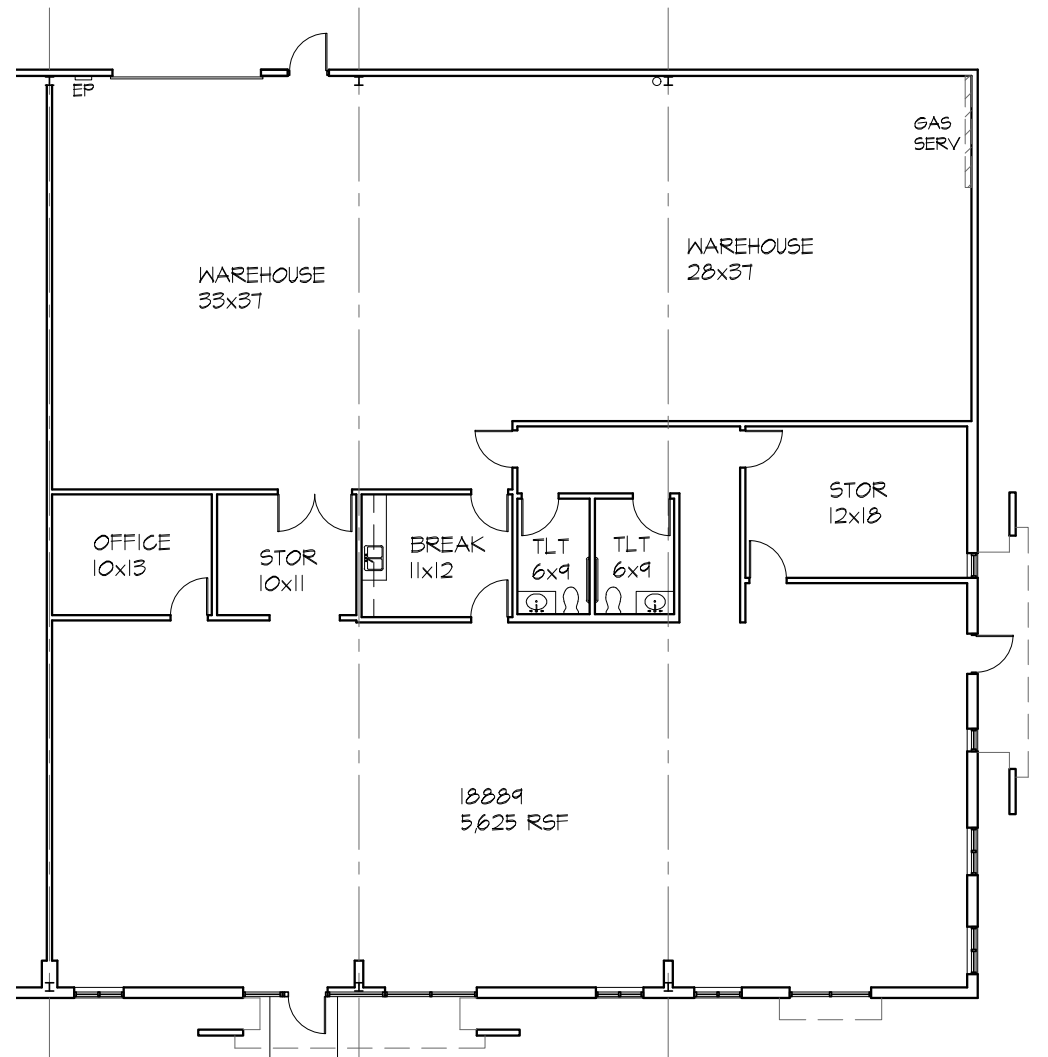
Logan Rose

+1 913 890 2013 • lrose@nai-heartland.com

4400 College Blvd, Suite 170
Overland Park, KS 66211
+1 913 362 1000
nai-heartland.com

Floor Plan: 18889

- ± 5,625 SF
- Excellent open office/showroom space
- One drive-in loading door



For more information:

Evan Calkins
+1 913 890 2017 • evan@nai-heartland.com

Logan Rose
+1 913 890 2013 • lrose@nai-heartland.com

4400 College Blvd, Suite 170
Overland Park, KS 66211
+1 913 362 1000
nai-heartland.com