



## ASSET INFORMATION

- Building 1 | 101 W Broad St
- Building 2 | 103 W Broad St
- Building 3 | 105 W Broad St
- George Mason Square consists of three (3) buildings in a private courtyard setting
- Mix of open/office space
- Excellent street visibility
- One (1) level free covered & free surface level parking
- Close proximity to East Falls Church Metro (Orange Line)
- Various retail options in walking distance

**C. TODD MCMANUS**

tmcmanus@klnb.com | 703-334-5622

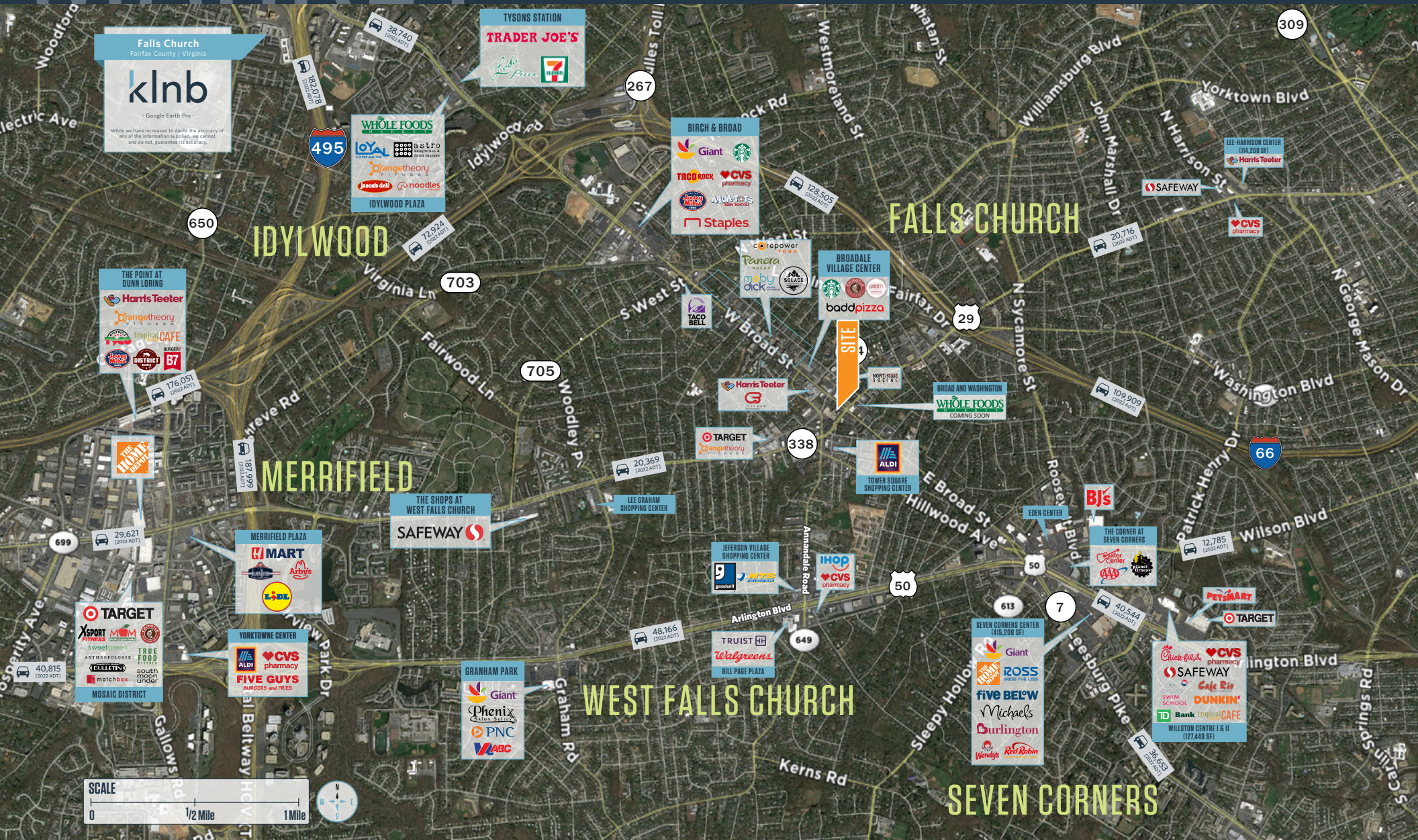
**JESSE MARTIN**

martin@klnb.com | 703-334-5622

# MARKET

# GEORGE MASON SQUARE

101, 103, 105 W. BROAD STREET, FALLS CHURCH, VA 22046



**C. TODD MCMANUS**  
tmcmanus@klNb.com | 703-334-5622

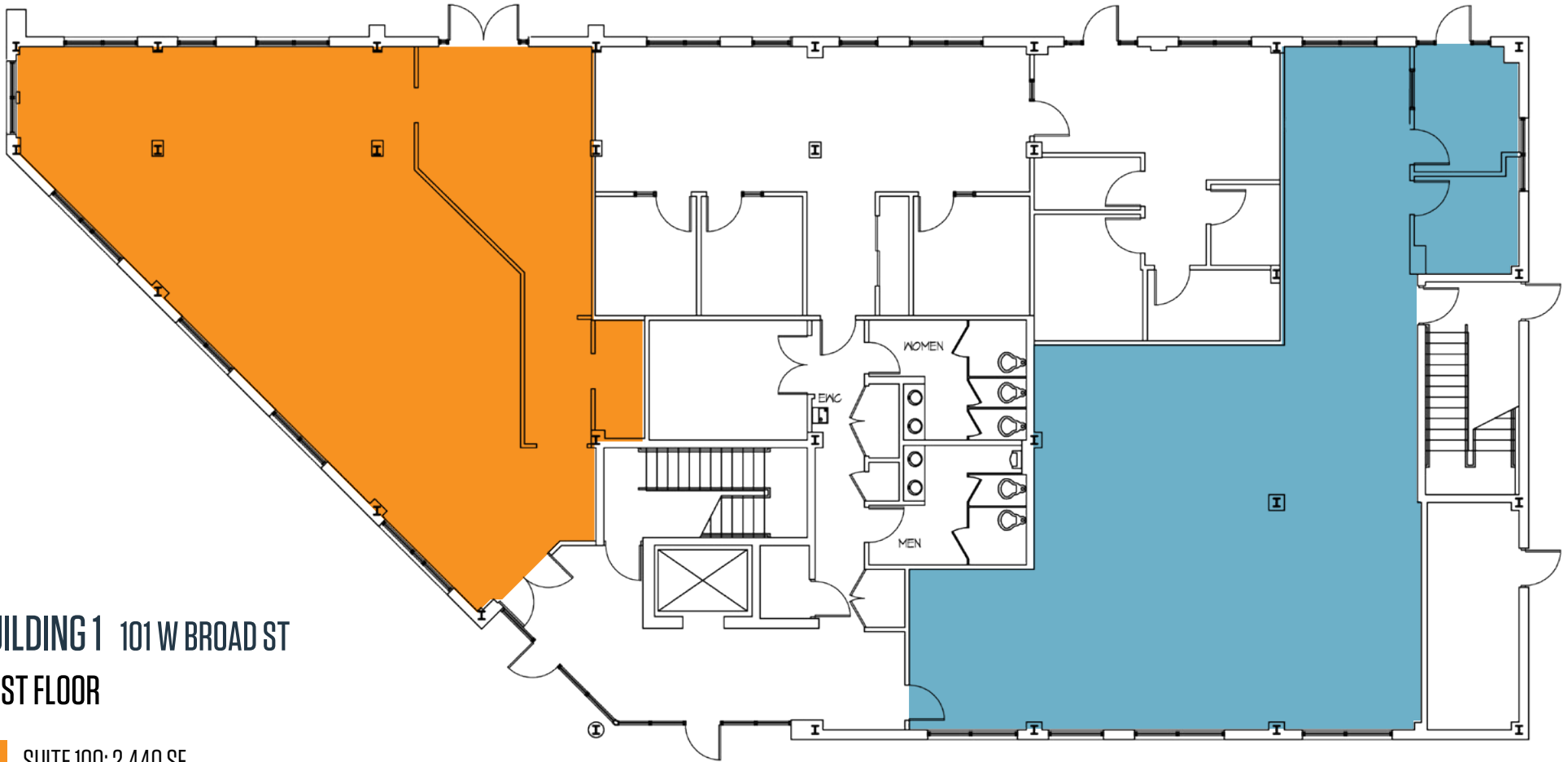
**JESSE MARTIN**  
jmartin@klNb.com | 703-334-5622



# FLOOR PLAN

# GEORGE MASON SQUARE

101, 103, 105 W. BROAD STREET, FALLS CHURCH, VA 22046



**BUILDING 1** 101 W BROAD ST  
**FIRST FLOOR**

 SUITE 100: 2,440 SF

 SUITE 120: 1,965 SF

**C. TODD MCMANUS**

tmcmanus@klnb.com | 703-334-5622

**JESSE MARTIN**

martin@klnb.com | 703-334-5622

**klnb**

# FLOOR PLAN

# GEORGE MASON SQUARE

101, 103, 105 W. BROAD STREET, FALLS CHURCH, VA 22046



**BUILDING 1** 101 W BROAD ST  
**THIRD FLOOR**

 SUITE 300: 1,998 SF

**C. TODD MCMANUS**

tmcmanus@klnb.com | 703-334-5622

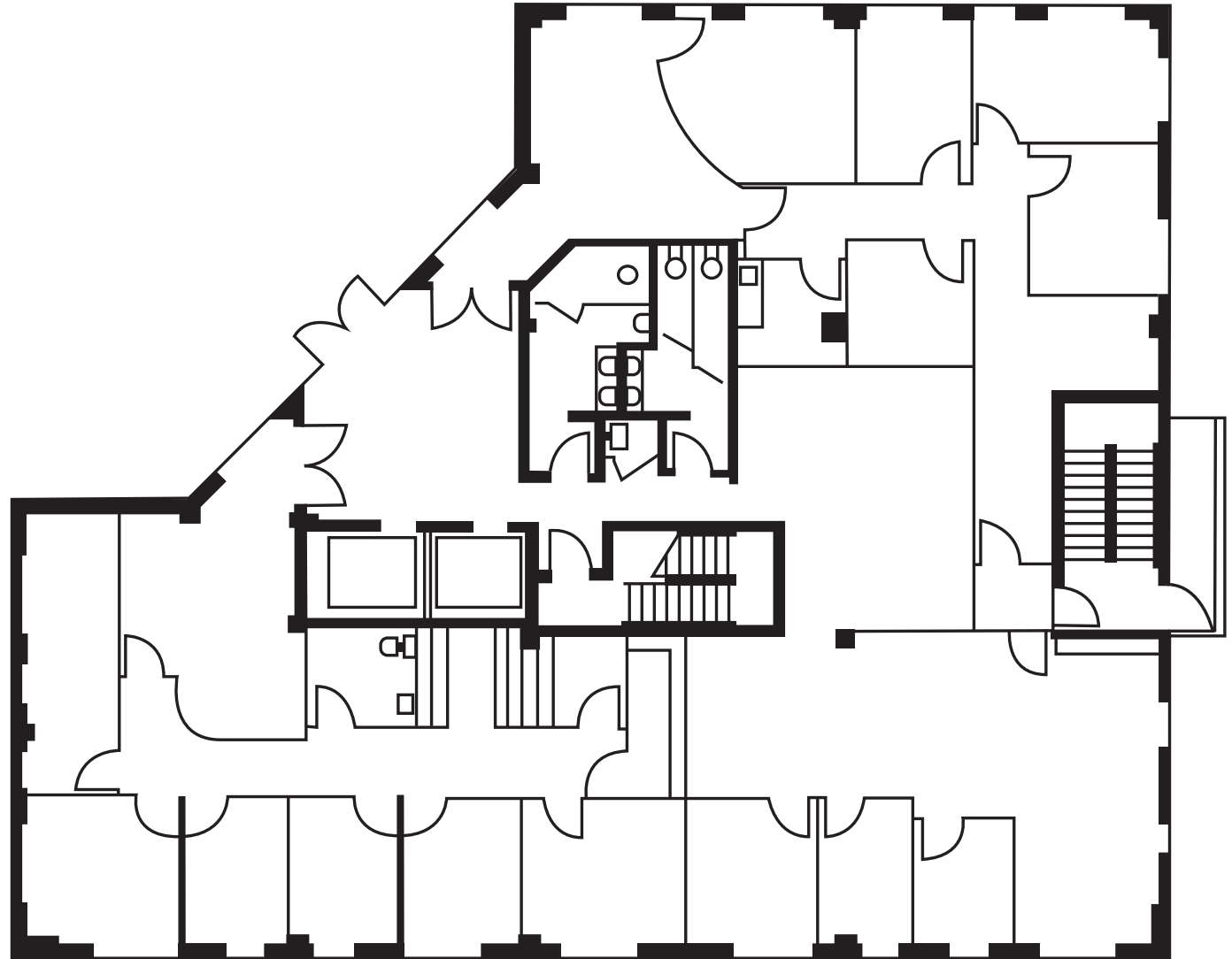
**JESSE MARTIN**

martin@klnb.com | 703-334-5622

**klnb**

**BUILDING 2 103 W BROAD ST**  
**FIRST FLOOR**

SUITE 100: 2,858 SF





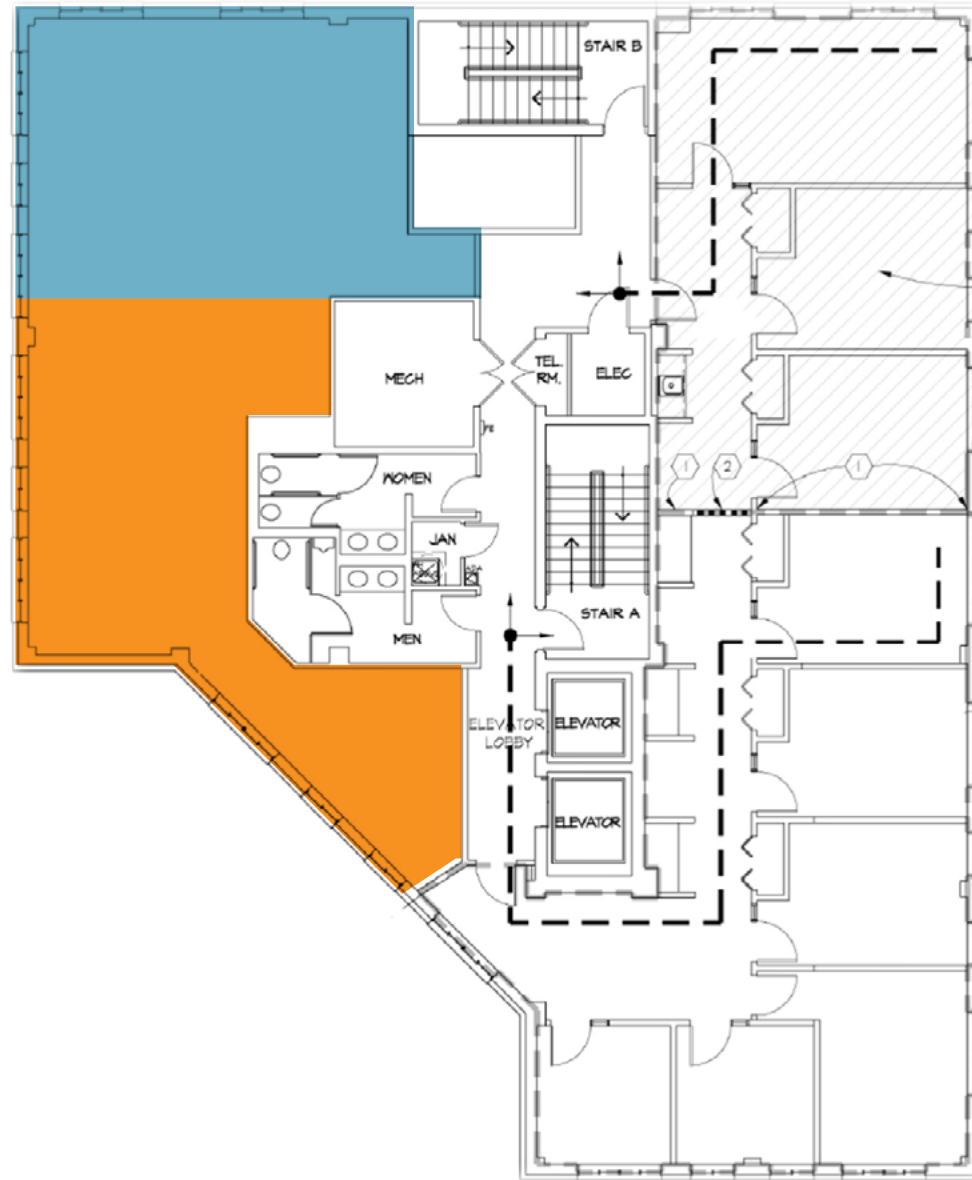
# FLOOR PLAN

# GEORGE MASON SQUARE

101, 103, 105 W. BROAD STREET, FALLS CHURCH, VA 22046

## BUILDING 2 103 W BROAD ST THIRD FLOOR

-  SUITE 320: 848 SF
-  SUITE 340: 996 SF



**C. TODD MCMANUS**

tmcmanus@klnb.com | 703-334-5622

**JESSE MARTIN**

martin@klnb.com | 703-334-5622

**klnb**

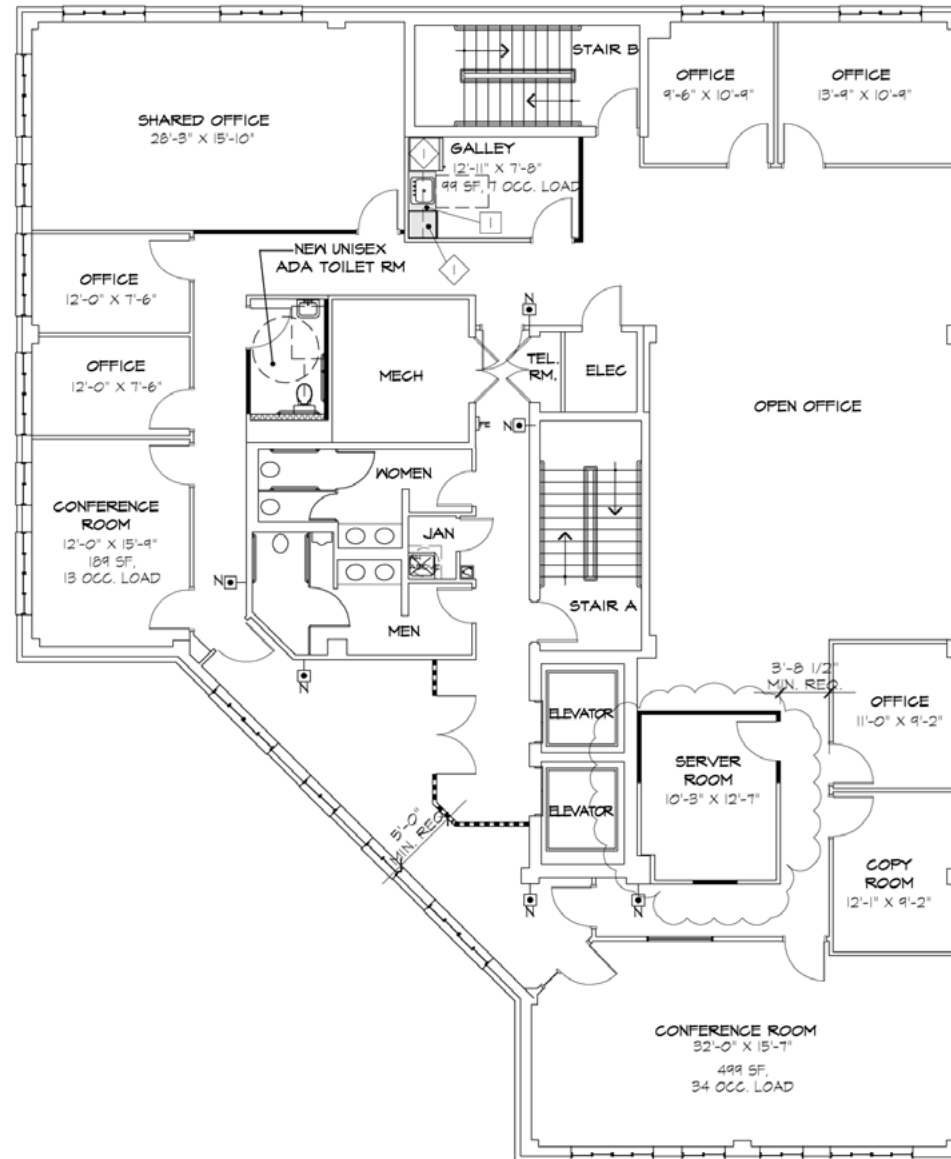
# FLOOR PLAN

# GEORGE MASON SQUARE

101, 103, 105 W. BROAD STREET, FALLS CHURCH, VA 22046

## BUILDING 2 103 W BROAD ST FIFTH FLOOR

FULL FLOOR OPPORTUNITY  
1,646 - 5,180 SF DIVISIBLE



C. TODD MCMANUS

tmcmanus@klnb.com | 703-334-5622

JESSE MARTIN

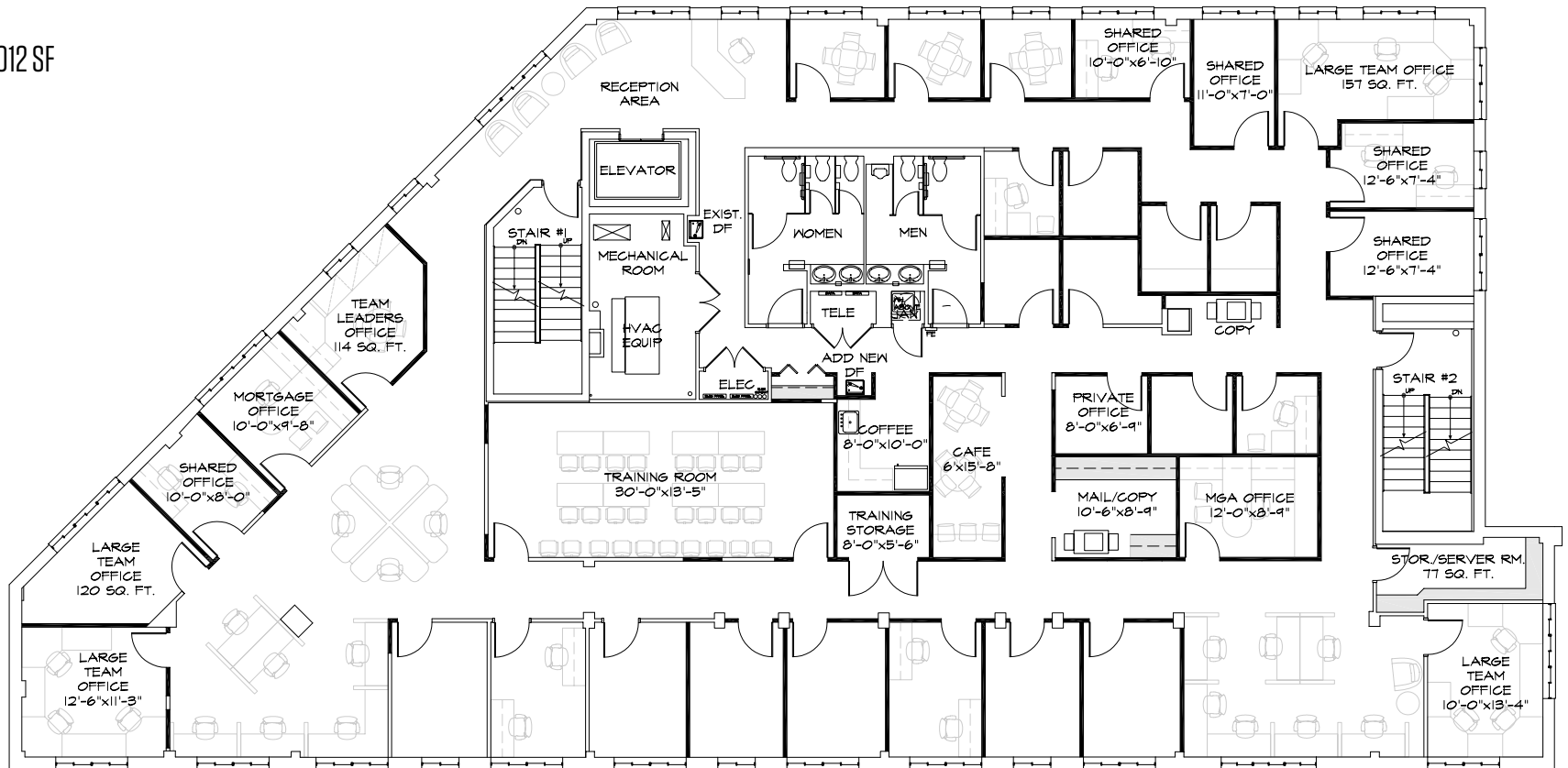
martin@klnb.com | 703-334-5622



## BUILDING 3 105 W BROAD ST

## SECOND FLOOR

SUITE 200: 7,012 SF





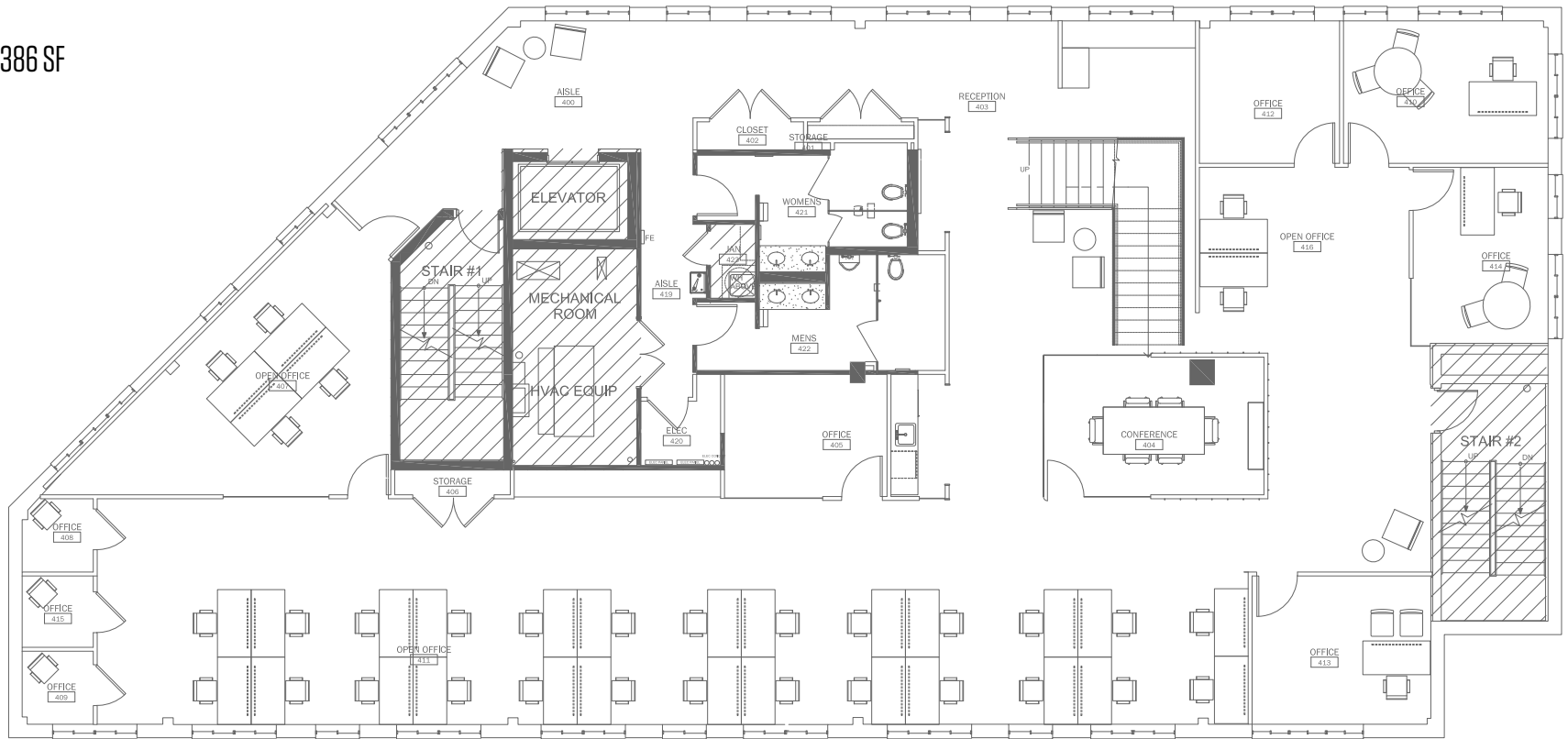
# FLOOR PLAN

# GEORGE MASON SQUARE

101, 103, 105 W. BROAD STREET, FALLS CHURCH, VA 22046

## BUILDING 3 105 W BROAD ST FOURTH FLOOR

SUITE 400: 5,386 SF



**C. TODD MCMANUS**

tmcmanus@klnb.com | 703-334-5622

**JESSE MARTIN**

martin@klnb.com | 703-334-5622



## BUILDING 3 105 W BROAD ST FIFTH FLOOR

SUITE 500: 5,386 SF



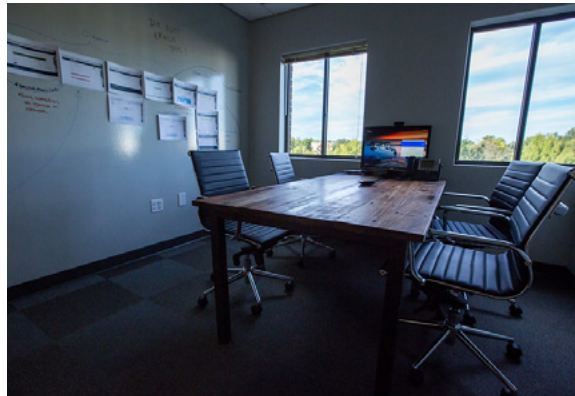
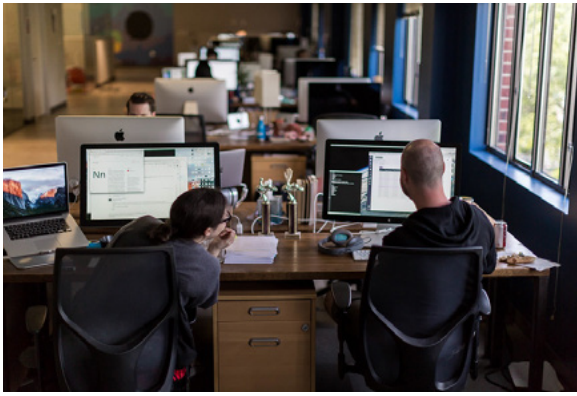
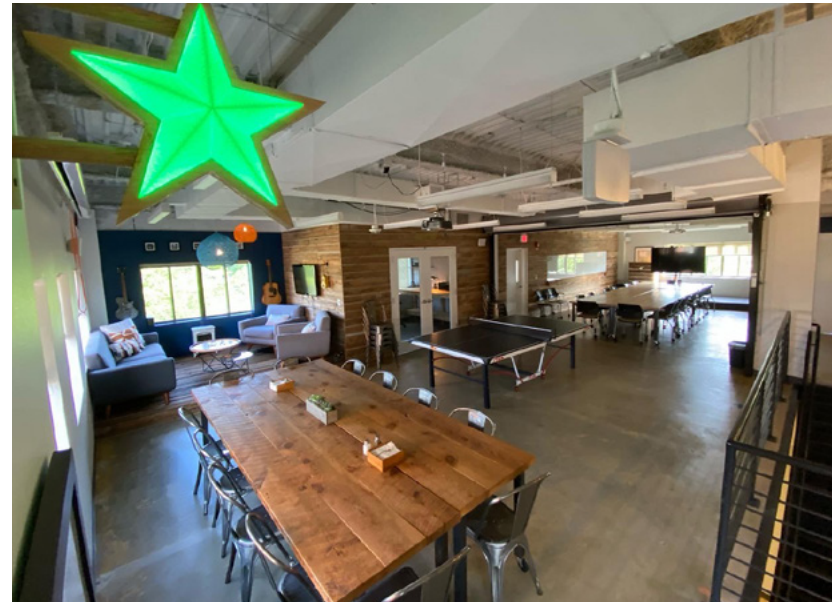
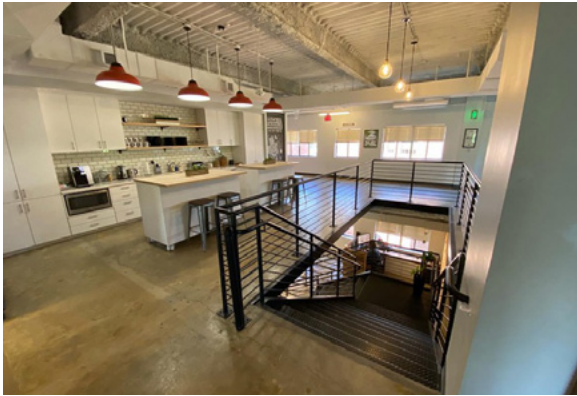
# PHOTOS

# GEORGE MASON SQUARE

101, 103, 105 W. BROAD STREET, FALLS CHURCH, VA 22046



105 W BROAD ST - 4TH & 5TH FLOORS



**C. TODD MCMANUS**

tmcmanus@klnb.com | 703-334-5622

**JESSE MARTIN**

martin@klnb.com | 703-334-5622

**klnb**



# GEORGE MASON SQUARE

101, 103, 105 W. BROAD STREET, FALLS CHURCH, VA 22046

## FOR MORE INFORMATION, PLEASE CONTACT:

### C. TODD MCMANUS

tmcmanus@klnb.com

703-334-5622

### JESSE MARTIN

jmartin@klnb.com

703-334-5620

8065 Leesburg Pike, Suite 700, Tysons, VA 22182

.....

## klnb.com



[instagram.com/klnbcre](https://www.instagram.com/klnbcre)



[linkedin.com/company/klnb](https://www.linkedin.com/company/klnb)



[facebook.com/KLNBCRE](https://www.facebook.com/KLNBCRE)

**CLICK TO VIEW PROPERTY WEBSITE**

While we have no reason to doubt the accuracy of any of the information supplied, we cannot, and do not, guarantee its accuracy. All information should be independently verified prior to a purchase or lease of the property. We are not responsible for errors, omissions, misuse, or misinterpretation of information contained herein and make no warranty of any kind, express or implied, with respect to the property or any other matters.