



FOR SALE

2823 GALLATIN PIKE

+/- 0.55 Acre

PROPERTY OVERVIEW

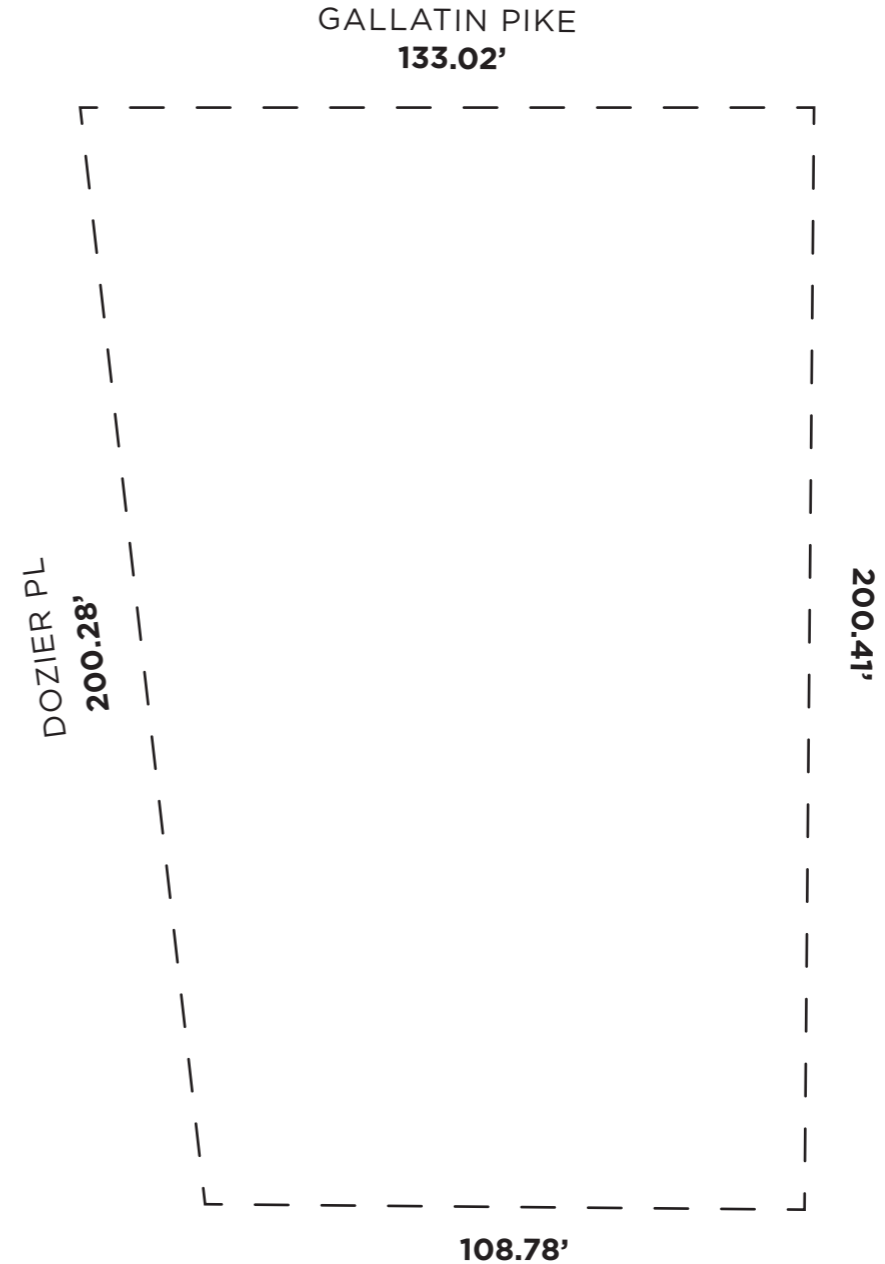
ADDRESS: 2823 GALLATIN PIKE, NASHVILLE, TN 37216

LOT SIZE: +/- 0.55 ACRE

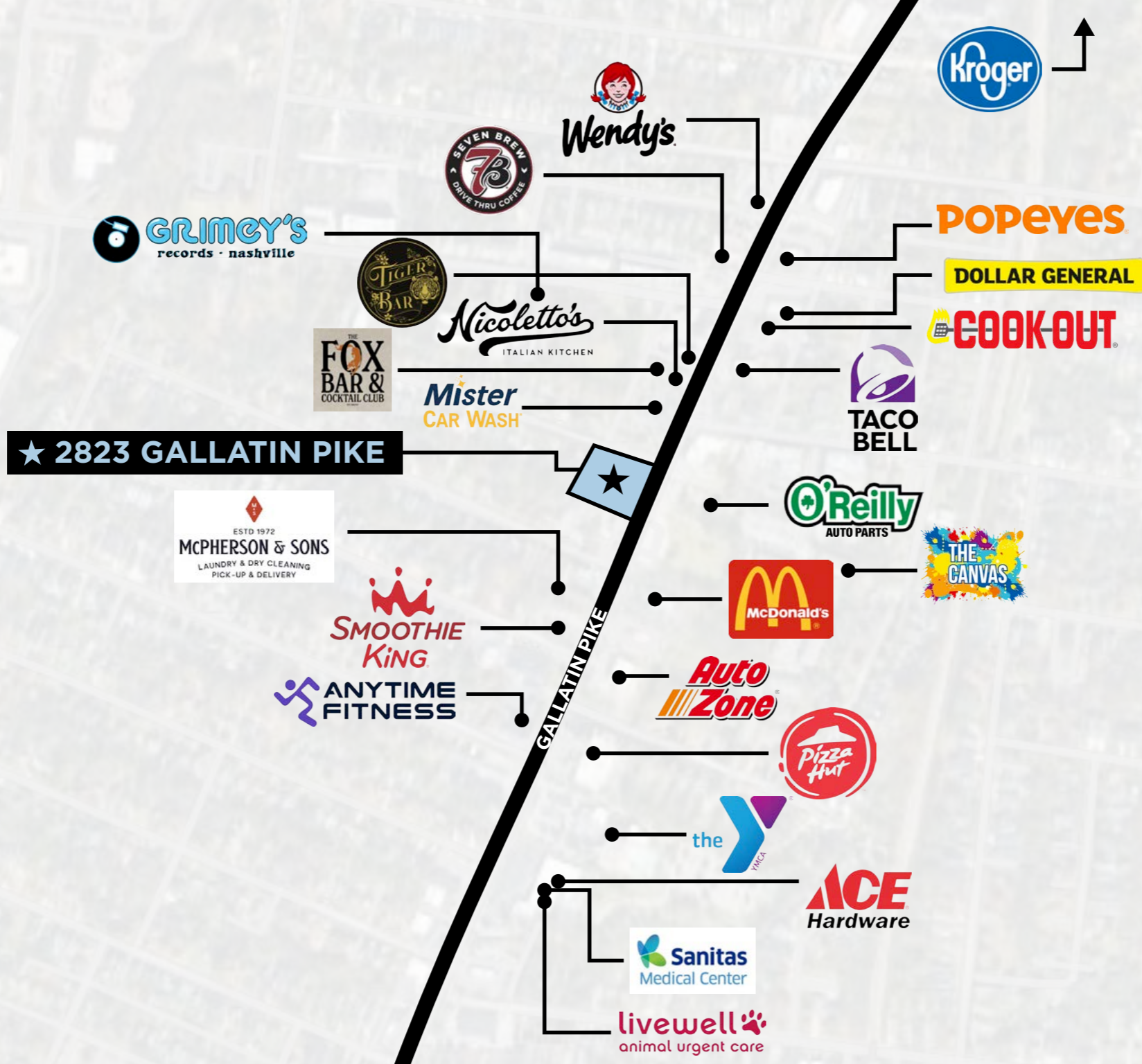
ZONING: MUL-A

TRAFFIC COUNT: +/- 25,000 CARS PER DAY

Located at 2823 Gallatin Pike in the heart of East Nashville, this +/- 0.55-acre corner lot for sale offers prime visibility along a high-traffic corridor with approximately 25,000 vehicles per day. Surrounded by a strong mix of national retailers and medical users—including McDonald’s, Wendy’s, Taco Bell, Smoothie King, O’Reilly Auto Parts, Ace Hardware, Sanitas Medical, and Ascension St. Thomas—this site is ideal for QSR, bank, urgent care, auto parts, or dollar/convenience store development. Nearby multifamily communities such as The Canvas and The Flats at Laurel & Pine provide a built-in customer base, making this a strategic opportunity for developers and single-tenant retail brands seeking strong traffic, high visibility, and proven co-tenancy in one of Nashville’s most vibrant urban corridors.

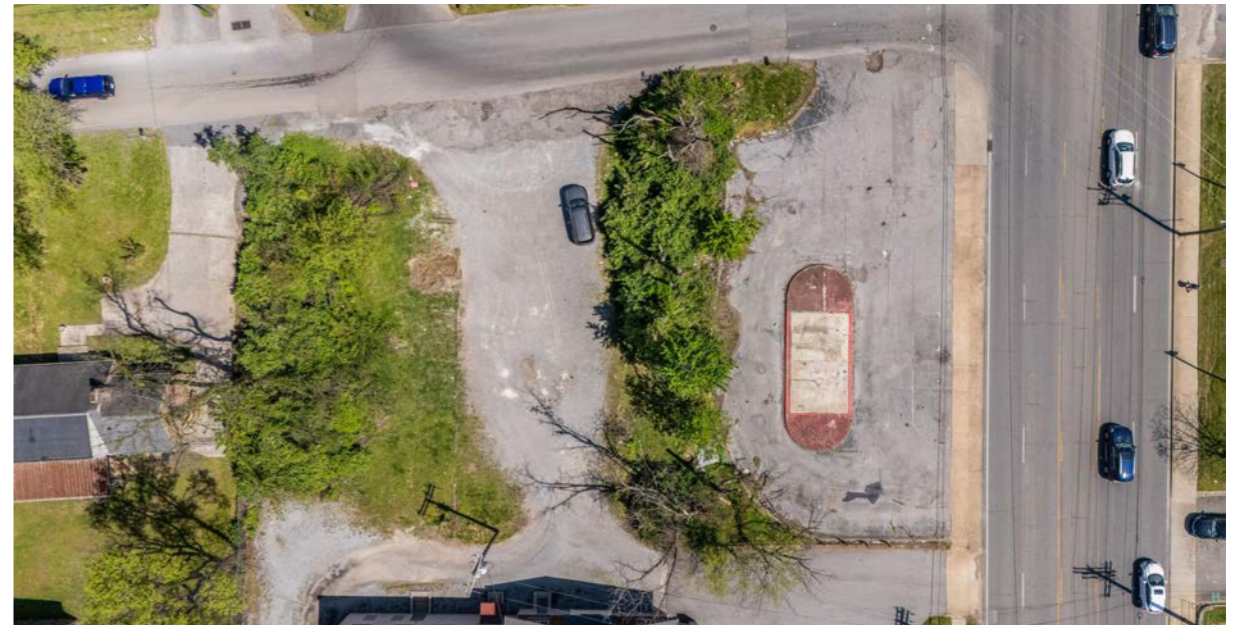
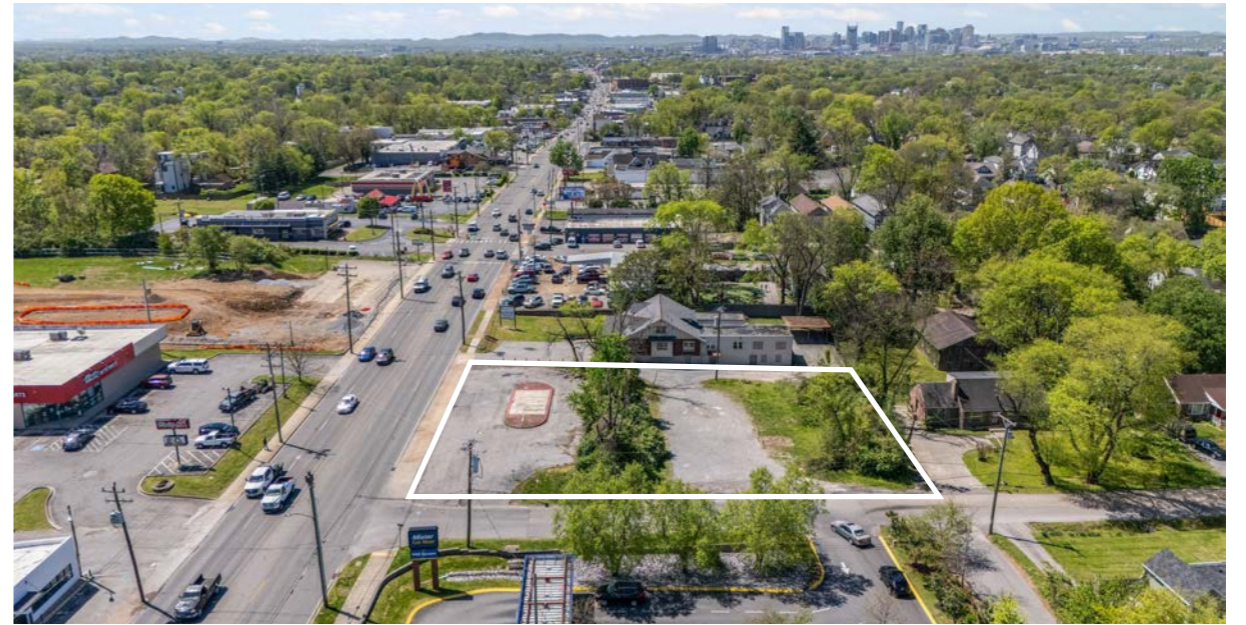


AREA OVERVIEW



FOR SALE | 2823 Gallatin Pike — +/- 0.55 Acre

GALLERY



FOR SALE | 2823 Gallatin Pike — +/- 0.55 Acre



2823 GALLATIN PIKE

+/- 0.55 Acre | For Sale

TRENT YATES

tyates@sagemontre.com

615.268.7724