

FOR SALE OFFICE CONDOMINIUM



426 East Barcellus Avenue, Ste. 103 Santa Maria, CA

Well appointed office condominium in “Barcellus Professional Plaza” on East Barcellus Street. This first floor office space is comprised of 3 large private offices, 1 internal restroom, conference room and break room. Medical/dental allowed, but please review CC & R’s for confirmation. Currently leased until May 2025.

Property Information

Sale Price	\$375,000
Size	±1,307 SF
Zoning	Commercial Professional Office
Parking	Private Lot/Ample
Elevator	Yes
APN	128-068-003

Chris Garner
805.928.2800 ext. 104
CGarner@PacificaCRE.com
Lic #01010310

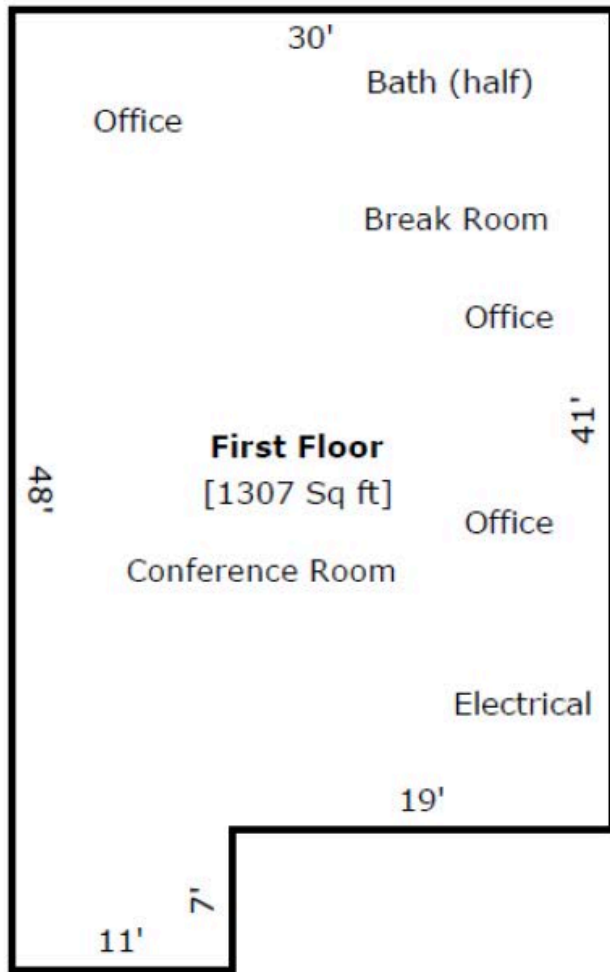


2520 Professional Parkway | Santa Maria, CA 93455 | PacificaCommercialRealty.com

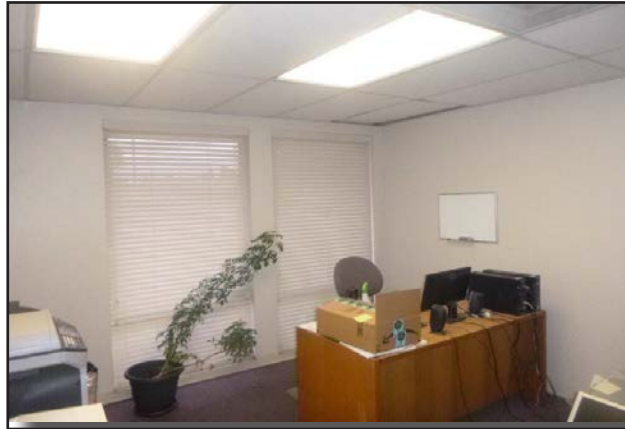
Information contained herein has been obtained from the owner of the property or from other sources deemed reliable. We have no reason to doubt its accuracy, but we do not guarantee it.

FOR SALE 426 EAST BARCELLUS AVENUE, STE. 103 | SANTA MARIA, CA

Floor Plan



Entrance



Chris Garner
805.928.2800 ext. 104
CGarner@PacificaCRE.com
Lic #01010310



Information contained herein has been obtained from the owner of the property or from other sources deemed reliable. We have no reason to doubt its accuracy, but we do not guarantee it.

2520 Professional Parkway | Santa Maria, CA 93455 | PacificaCommercialRealty.com