

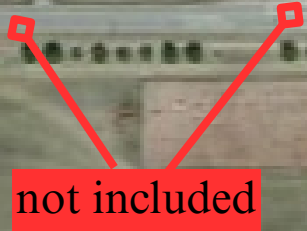
A Land Investment Opportunity
E. IMHOFF & 24TH AVENUE SE
Development Land - NORMAN, OK 73071



24th Avenue SE



E IMHOFF RD

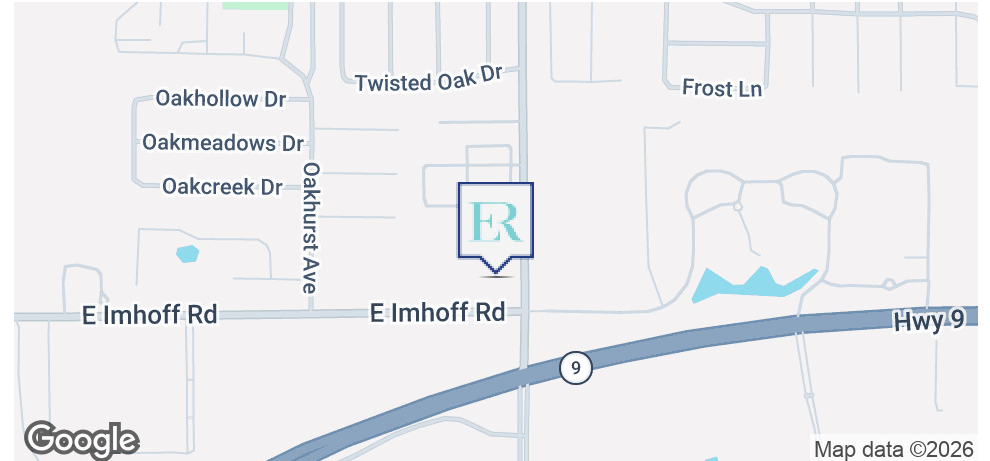


CROSSPOINT CHURCH

Gayla Artman
Broker Associate
405.826.7975

E. IMHOFF & 24TH AVENUE SE

DEVELOPMENT LAND - NORMAN, OK 73071



OFFERING SUMMARY

Sale Price: \$1,348,625

Lot Size: 7.74 Acres

Zoning: C-2 General Commercial

Market: Norman

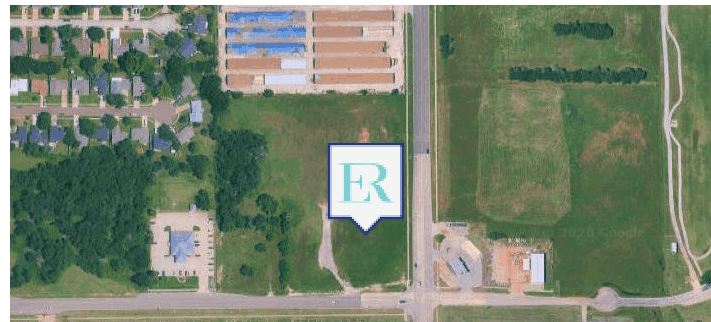
Price / SF: \$

PROPERTY OVERVIEW

7.74 acres (net area exclusive of 50' right of way 6.653 acres). The site does not include the south corners.

LOCATION OVERVIEW

Site location is one block north of the intersection of 24th Avenue SE and Hwy 9 East. Neighbors are Norman Regional Nine, Hitachi, Reagan Elementary, Mini Storage Facility, US Postal Training Center, Marriot Hotel and much more.



PROPERTY HIGHLIGHTS

- Level terrain.
- Great access to Hwy 9 East and Classen Blvd.
- One mile to E. Lindsey Street.

DEMOGRAPHICS

	2 MILES	3.5 MILES	5 MILES
Total Households	9,235	20,611	34,603
Total Population	21,635	55,840	89,667
Average HH Income	\$43,976	\$50,256	\$53,421

GAYLA ARTMAN

Broker Associate
Equity Commercial Realty Advisors, LLC (405) 826-7975 cell
gartman@equityrealty.net (405) 640-6167 office

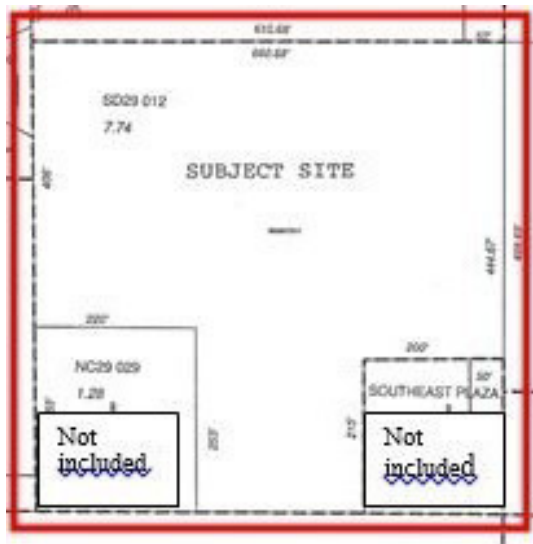
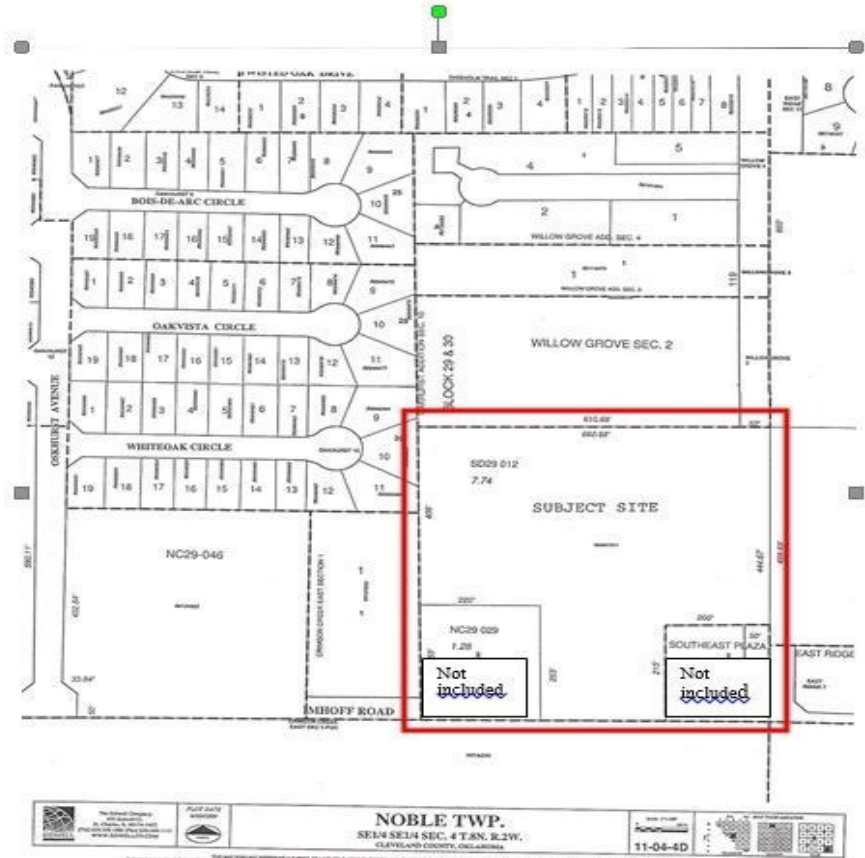
E. IMHOFF AND 24TH AVENUE SE

AKA / 0 24TH AVENUE SE, NORMAN, OK 73071

NE of E Imhoff Rd and 24th Ave SE



7.74 acres Imhoff and 24th Avenue SE
Norman, Oklahoma



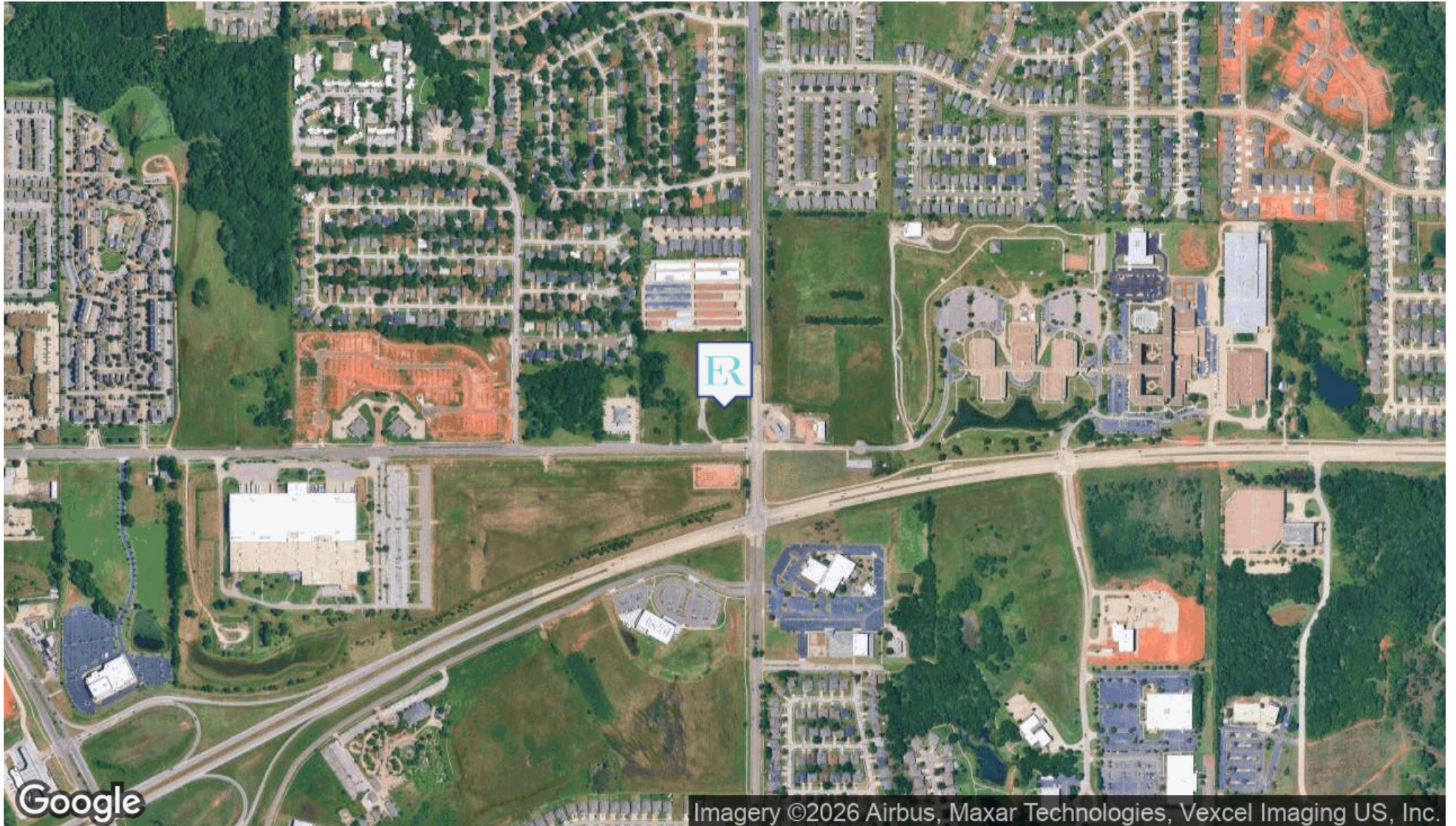
GAYLA ARTMAN

Broker Associate

Equity Commercial Realty Advisors, LLC (405) 826-7975 cell
gartman@equityrealty.net (405) 640-6167 office

E. IMHOFF AND 24TH AVENUE SE

E. IMHOFF AND 24TH AVENUE SE, NORMAN, OK 73071



GAYLA ARTMAN

Broker Associate

Equity Commercial Realty Advisors, LLC (405) 826-7975 cell
gartman@equityrealty.net (405) 640-6167 office