

FOR LEASE FLEX SPACE



170 N. MAPLE STREET | CORONA, CALIFORNIA

PROPERTY HIGHLIGHTS

- High Image Industrial/Office Park
- Prime West Corona Location
- Great Access to 91 Fwy.
- 24' Clear Height (Verify)
- 10'W x 14'H Roll Up Door
- 200 AMPS 277/480 Volts (Verify)
- Professionally Managed Business Park

PROPERTY OVERVIEW

Maple Center is a 19 Unit Multi-Tenant Industrial Flex Business Park with best warehouse clearance in its Industrial/Flex class. Institutional Ownership and Professionally managed.

EXCLUSIVELY LISTED BY:

John Bosko

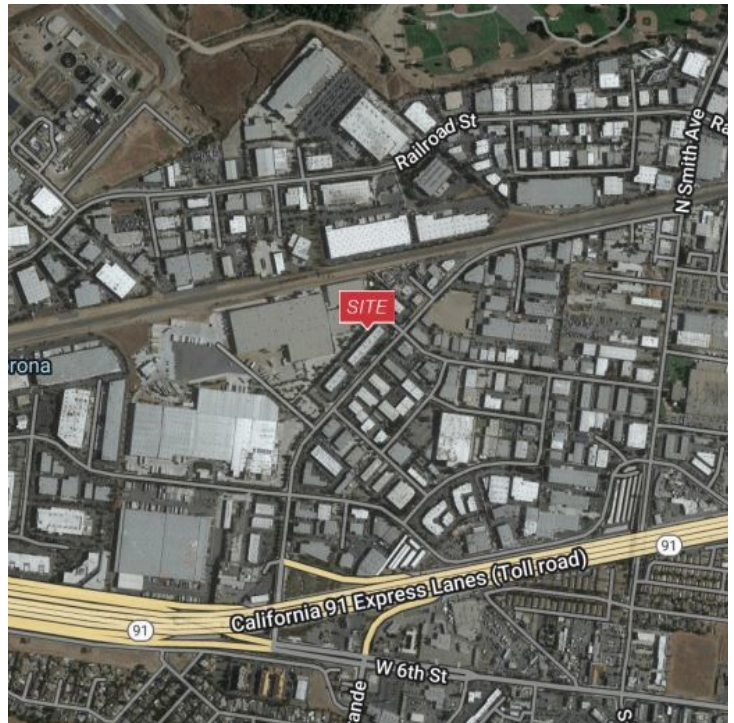
Senior Vice President
949.468.2323 Direct
johnbosko@naicapital.com
CA DRE #00969975

SPACES

LEASE RATE

SPACE SIZE

SPACES	LEASE RATE	SPACE SIZE
170 N. Maple - B-101	Negotiable	2,304 SF

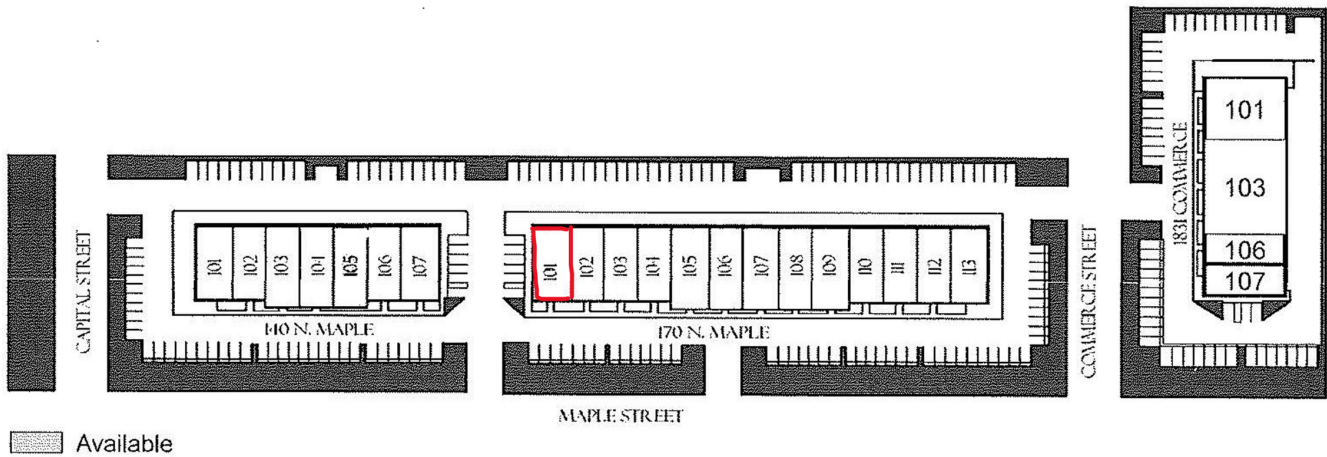


NAICapital
COMMERCIAL REAL ESTATE SERVICES, WORLDWIDE

www.naicapital.com



SITE PLAN



John Bosko
Senior Vice President
949.468.2323 Direct
johnbosko@naicapital.com
CA DRE #00969975

No warranty, express or implied, is made as to the accuracy of the information contained herein. This information is submitted subject to errors, omissions, change of price, rental or other conditions, withdrawal without notice, and is subject to any special listing conditions imposed by our principals. Cooperating brokers, buyers, tenants and other parties who receive this document should not rely on it, but should use it as a starting point of analysis, and should independently confirm the accuracy of the information contained herein through a due diligence review of the books, records, files and documents that constitute reliable sources of the information described herein. Logos are for identification purposes only and may be trademarks of their respective companies. NAI Capital, Inc. CAL DRE Lic. #02130474