

INTERSTATE 10 | 8 BUSINESS PARK

INTERSTATE 10 & INTERSTATE 8 | ELOY, ARIZONA



CONTACT FOR MORE INFORMATION

Trey Davis
tdavis@landadvisors.com
602.363.3901

Ben Heglie
bheglie@landadvisors.com
480.874.4302

Kirk McCarville, CCIM
kmccarville@landadvisors.com
520.251.0348

 Land Advisors[®]
ORGANIZATION

480.483.8100 | LandAdvisors.com

EXECUTIVE SUMMARY



SIZE (ACRES)	±624.06	For Sale
	±549.66	Additional acreage under option to purchase by current Owner.
	±1,173.72	TOTAL
PRICE	Submit	
ZONING	I-2, City of Eloy	
UTILITIES	To Site	
TAXES	\$39,665 (2025)	

FREIGHT DRIVE MILES AND TIME

City	Distance	Drive Time
Tucson, AZ	51 miles	50m
Phoenix, AZ	54 miles	60m
Nogales, MX	119 miles	2h
Yuma, AZ	187 miles	2h, 50m
Puerto Peñasco, MX	190 miles	3h, 30m
Hermosillo, MX	291 miles	5h, 20m
San Diego, CA	257 miles	5h, 10m
El Paso, TX	368 miles	5h, 10m
Los Angeles, CA	434 miles	6h, 30m
San Francisco, CA	815 miles	12h
Dallas, TX	1,003 miles	14h, 20m
Houston, TX	1,114 miles	16h, 10m
New Orleans, LA	1,460 miles	21h, 20m
Seattle, WA	1,483 miles	22h, 40m
Calgary, AL	1,606 miles	24h
Vancouver, BC	1,619 miles	25h
Minneapolis, MN	1,639 miles	26h
Detroit, MI	1,979 miles	30h
Orlando, FL	2,076 miles	30h

*ungoverned speed, rounded to 10 minute increments

COMMENTS

- Located in an Opportunity Zone and Foreign Trade Zone 75.
- Rail line access.
- Ultra high speed internet.
- Major transportation corridor in every direction ensure easy access.
- Designed to meet the development requirements of today's high tech industrial and commercial tenants.

PRICE

Click the Links Below for More Information:

- [Alta Survey](#)
- [Zoning](#)
- [Impact Fees](#)
- [APS Will Serve Letter](#)

*Additional Due Diligence Available Upon Request.



CORPORATE NEIGHBORS

Trey Davis | 602.363.3901 | Ben Heglie | 480.483.8100 | Kirk P. McCarville, CCIM | 520.251.0348 | landadvisors.com



While the Land Advisors Organization makes every effort to provide accurate and complete information, there is no warranty, expressed or implied, as to the accuracy, reliability or completeness of furnished data. This information can not be reproduced in part or whole without prior written permission. © 2026 The Land Advisors Organization. All rights reserved.

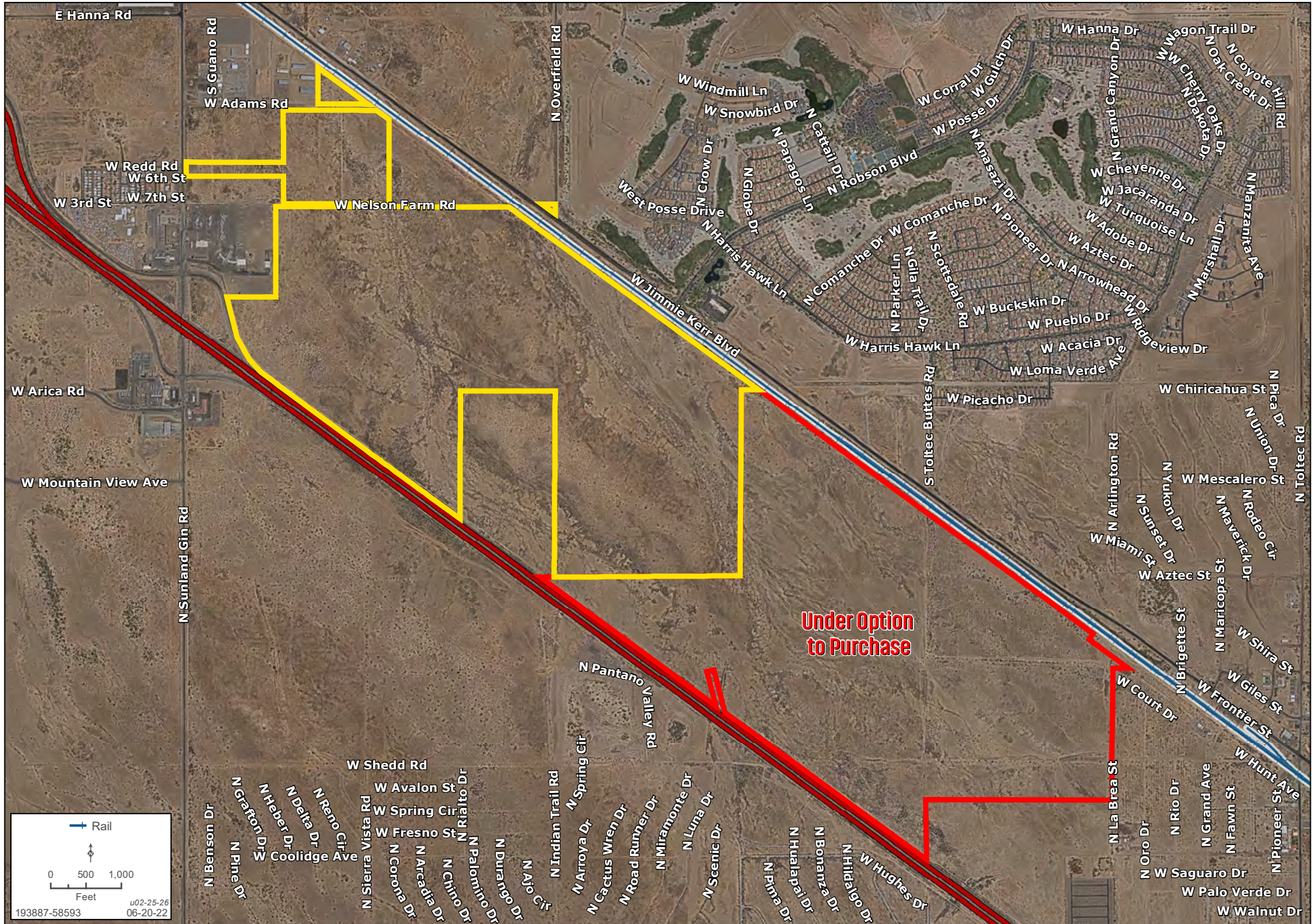
AMENITIES

Trey Davis | 602.363.3901 | Ben Heglie | 480.483.8100 | Kirk P. McCarville, CCIM | 520.251.0348 | landadvisors.com



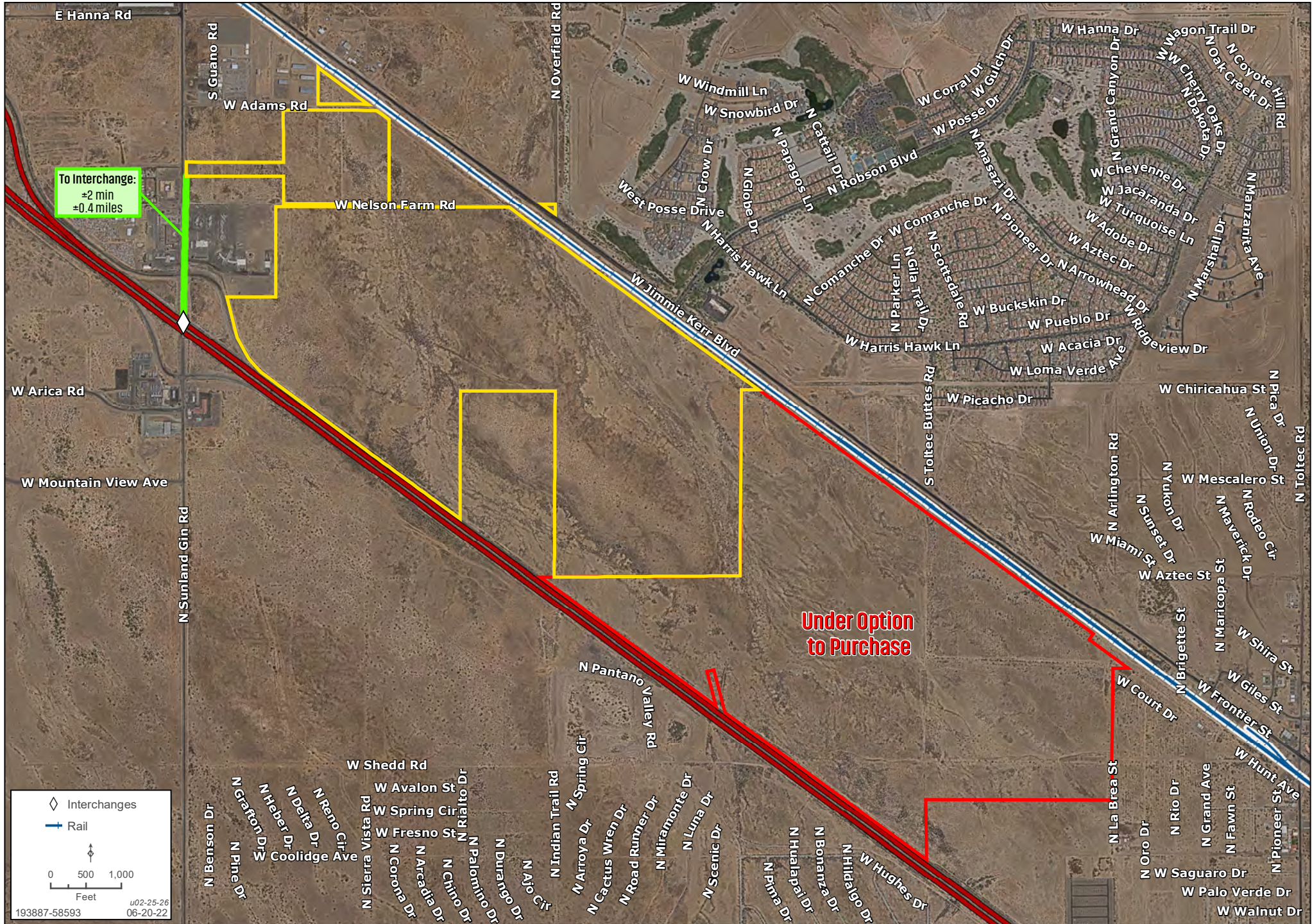
DETAIL

Trey Davis | 602.363.3901 | Ben Heglie | 480.483.8100 | Kirk P. McCarville, CCIM | 520.251.0348 | landadvisors.com



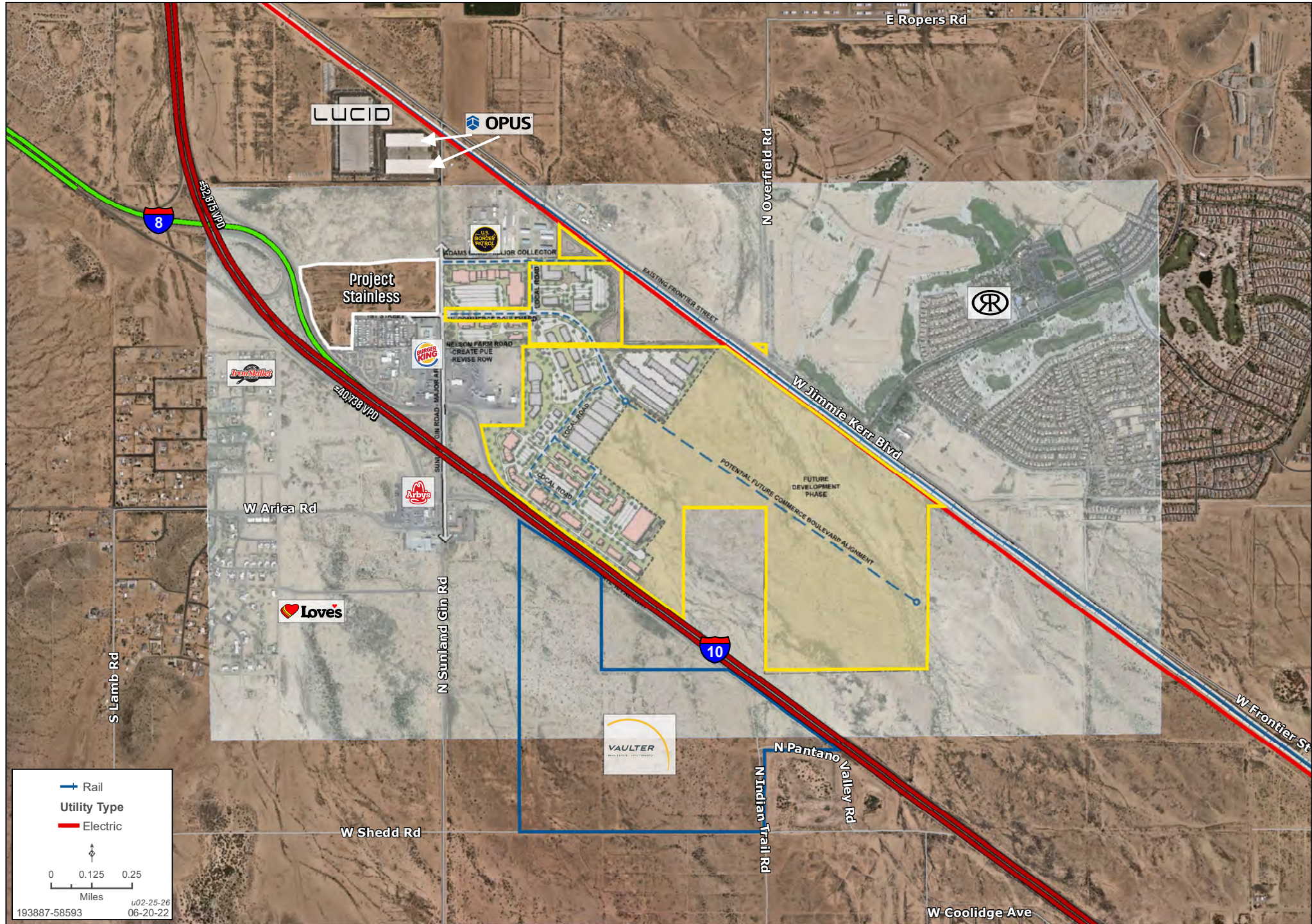
PROXIMITY TO INTERCHANGE

Trey Davis | 602.363.3901 | Ben Heglie | 480.483.8100 | Kirk P. McCarville, CCIM | 520.251.0348 | landadvisors.com



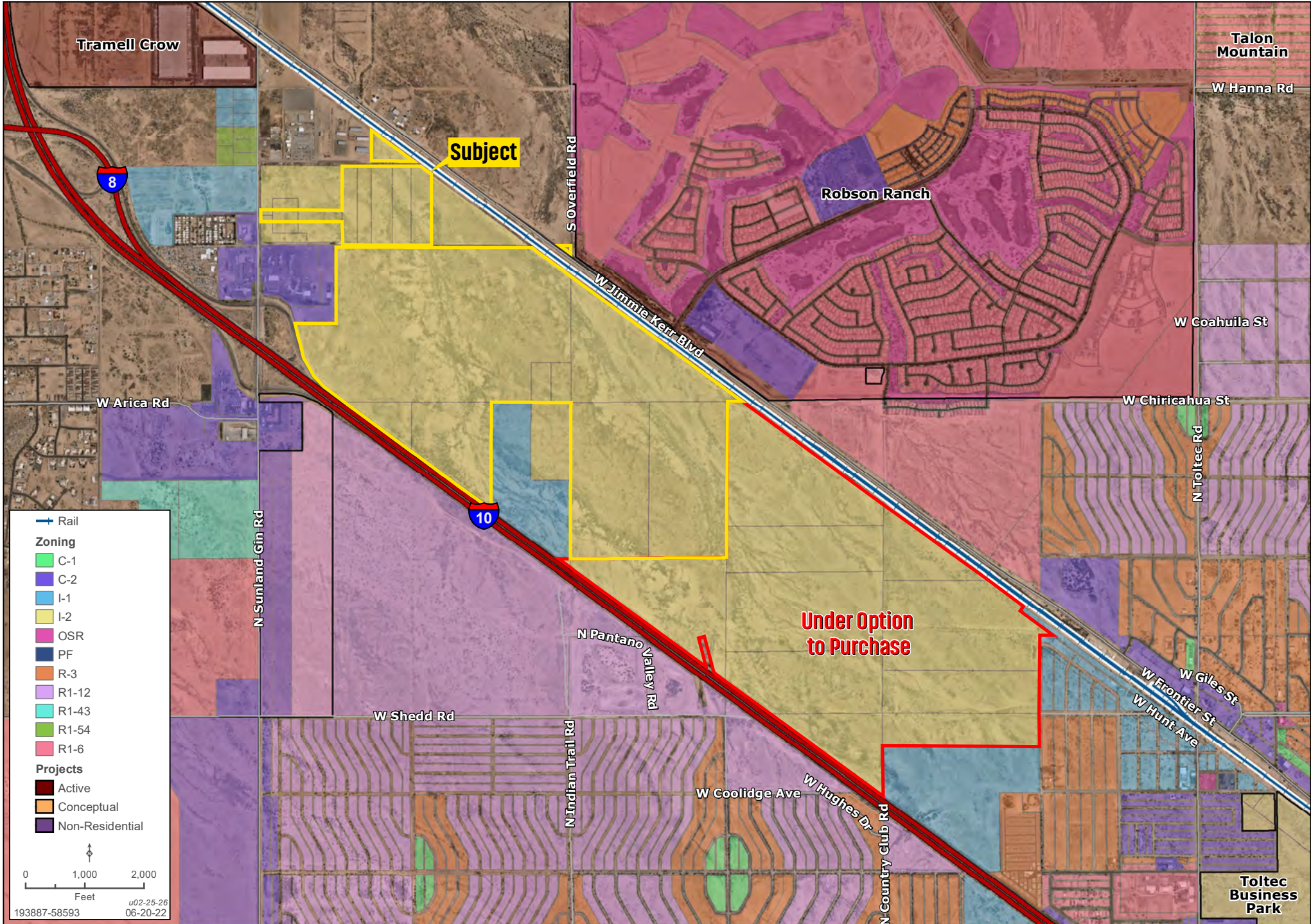
CONCEPTUAL SITE PLAN

Trey Davis | 602.363.3901 | Ben Heglie | 480.483.8100 | Kirk P. McCarville, CCIM | 520.251.0348 | landadvisors.com



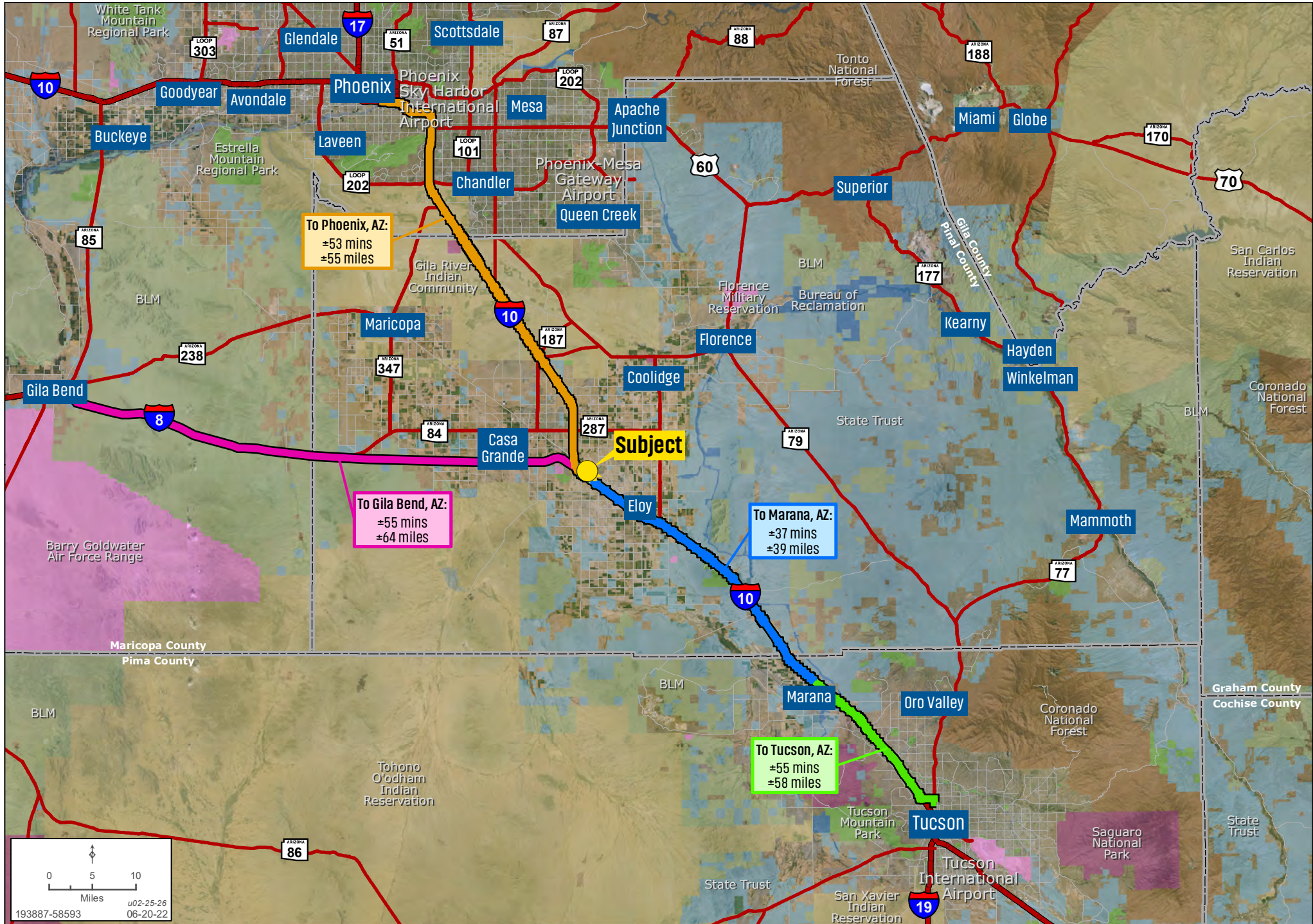
CITY ZONING

Trey Davis | 602.363.3901 | Ben Heglie | 480.483.8100 | Kirk P. McCarville, CCIM | 520.251.0348 | landadvisors.com



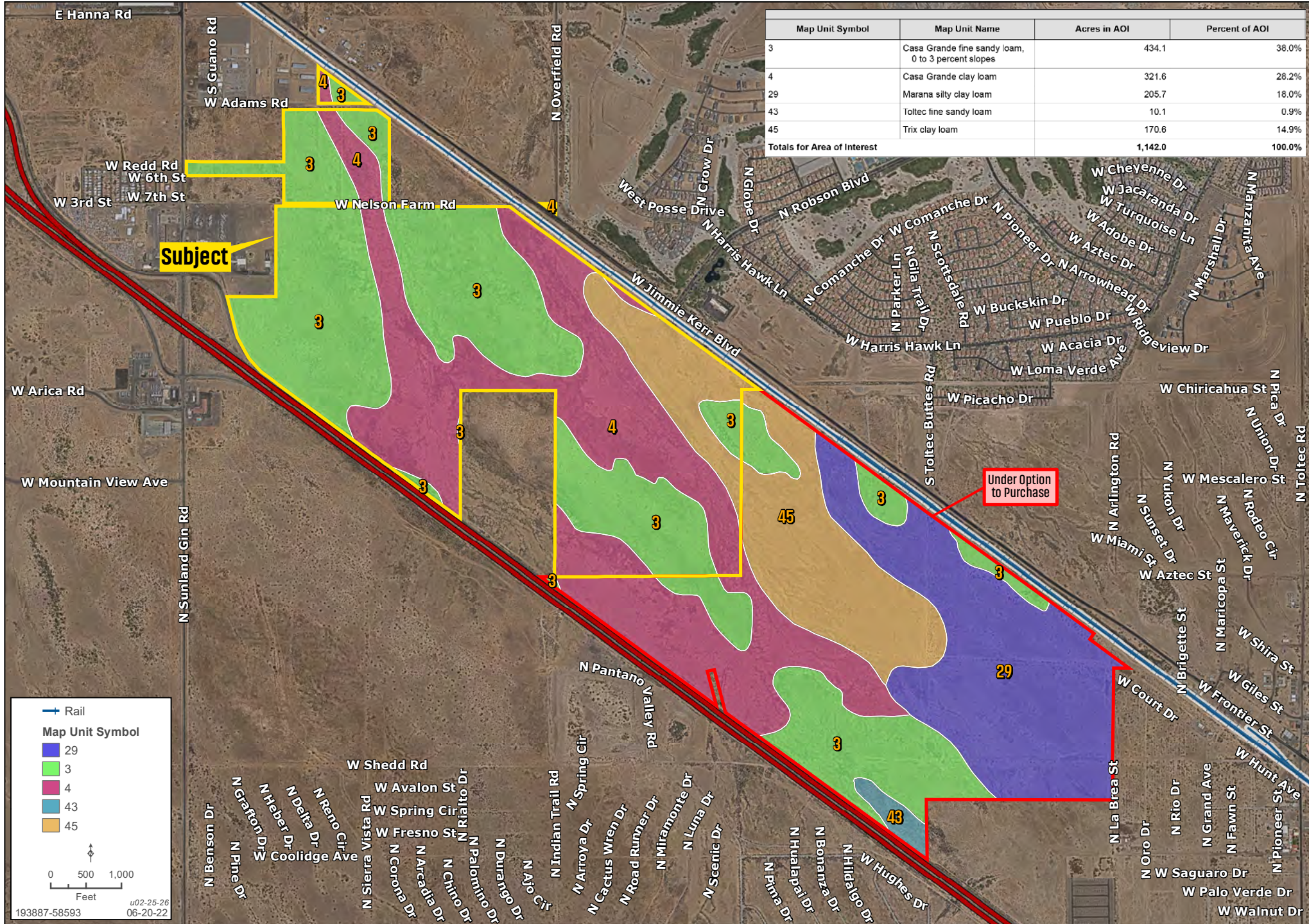
PROXIMITY

Trey Davis | 602.363.3901 | Ben Heglie | 480.483.8100 | Kirk P. McCarville, CCIM | 520.251.0348 | landadvisors.com



SOIL

Trey Davis | 602.363.3901 | Ben Heglie | 480.483.8100 | Kirk P. McCarville, CCIM | 520.251.0348 | landadvisors.com



The information in this document and any attachments regarding any property has been obtained from sources believed reliable, but we have not verified it and we make no guarantee, warranty, or representation as to its accuracy or completeness, and we do not undertake to update or correct any of the information presented. Any projections, opinions, assumptions, or estimates ("forward-looking statements") used are, for example, only and do not represent the current or future performance of the property and actual results may differ materially from such forward-looking statement due to, without limitation, changes in: (i) the market, (ii) governmental legal, regulatory or permitted use changes, and (iii) other factors. You and your advisors should conduct a careful, independent investigation of the property to determine to your satisfaction the property's suitability for your needs. Any reliance on this information is at your own risk and is subject to change, prior sale or complete withdrawal. AZPinal193887 - June 12, 2026 9:38 AM.



[LandAdvisors.com](https://www.LandAdvisors.com)