

3633 Long Beach Blvd., Long Beach, CA 90807

PLATINUM
properties

THE HAND & WRIST CENTER

**OFFICE/MEDICAL SPACE
FOR LEASE**

HOYT HOCHMAN, CCIM
BROKER
CABRE# 01211717
Broker # 02247644
Hoyt@Platinumpre.com
562-301-7293

BRENDAN MORRIS
ASSOCIATE
CABRE# 01854557
Broker # 02247644
Brendan@Platinumpre.com
562-244-0854

Platinum
Properties Real Estate

6201 E. BAYSHORE WALK
LONG BEACH, CA 90803
DRE # 02247644

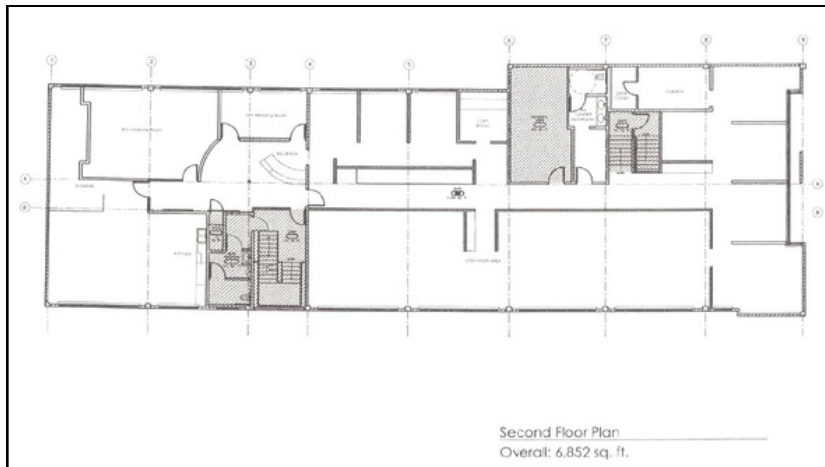
3633 Long Beach Blvd., Long Beach, CA 90807

PLATINUM
properties

PLATINUM PROPERTIES REAL ESTATE
IS PROUD TO PRESENT THIS 6,800 SF
OFFICE/MEDICAL SPACE FOR LEASE IN THE
HEART OF BIXBY KNOLLS!

ASKING RATE - \$1.85 PER SF
+ NNN (\$0.61 PER SF)

CALL 562-301-7293 FOR MORE INFO!



HOYT HOCHMAN, CCIM
BROKER
CABRE# 01211717
Broker # 02247644
Hoyt@Platinumpre.com
562-301-7293

BRENDAN MORRIS
ASSOCIATE
CABRE# 01854557
Broker # 02247644
Brendan@Platinumpre.com
562-244-0854

Platinum
Properties Real Estate

6201 E. BAYSHORE WALK
LONG BEACH, CA 90803
DRE # 02247644

3633 Long Beach Blvd., Long Beach, CA 90807

PLATINUM
properties

6,800 SF Office/Medical Office

29 Dedicated Workstations

Private Restroom | Copy/Data Room

Server Room | Drafting Table

Kitchen/Breakroom/Lounge Area

Ample Parking in Shared Lot

Additional Parking is available if needed



HOYT HOCHMAN, CCIM
BROKER
CABRE# 01211717
Broker # 02247644
Hoyt@Platinumpre.com
562-301-7293

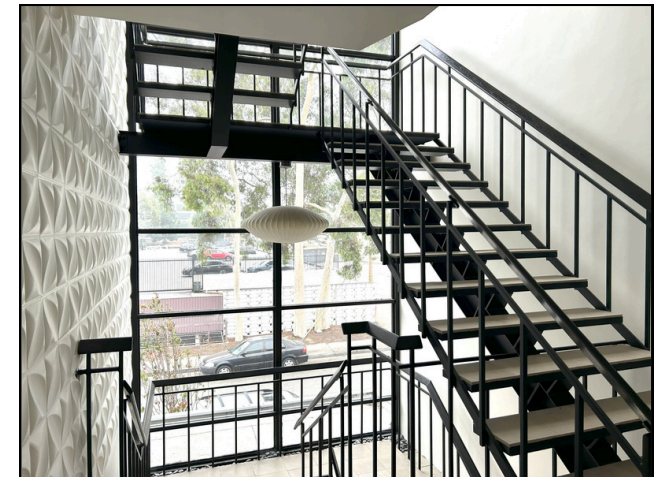
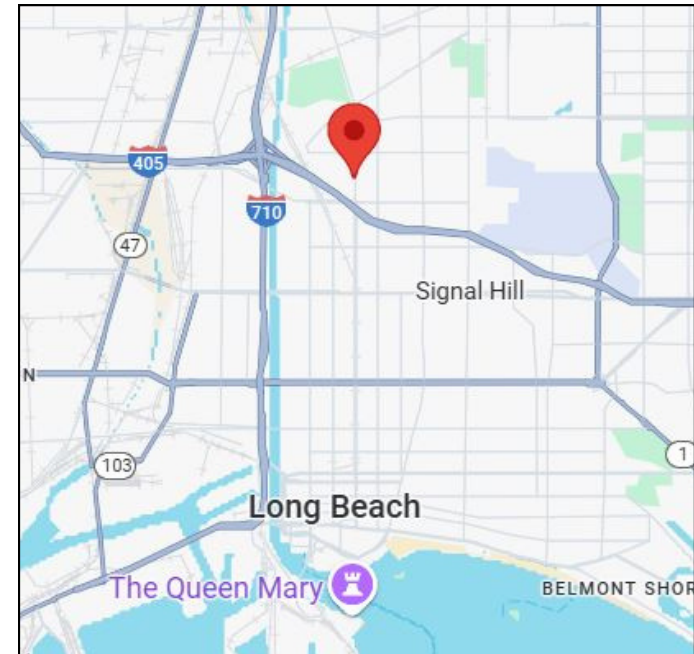
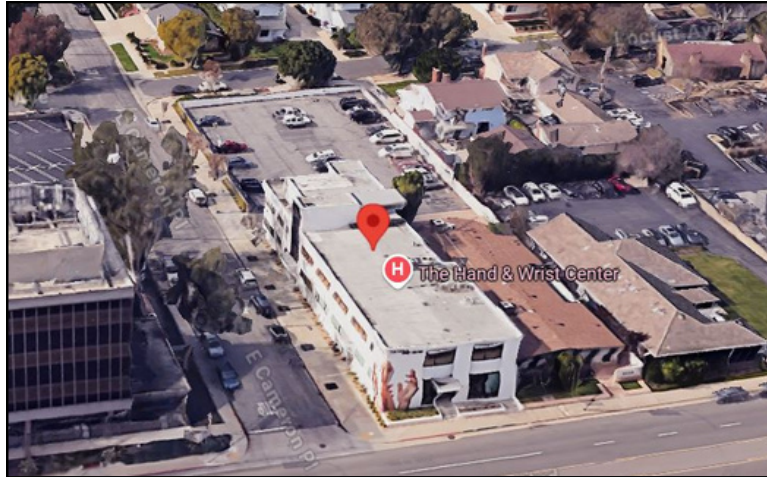
BRENDAN MORRIS
ASSOCIATE
CABRE# 01854557
Broker # 02247644
Brendan@Platinumpre.com
562-244-0854

Platinum
Properties Real Estate

6201 E. BAYSHORE WALK
LONG BEACH, CA 90803
DRE # 02247644

3633 Long Beach Blvd., Long Beach, CA 90807

PLATINUM
properties



HOYT HOCHMAN, CCIM
BROKER
CABRE# 01211717
Broker # 02247644
Hoyt@Platinumpre.com
562-301-7293

BRENDAN MORRIS
ASSOCIATE
CABRE# 01854557
Broker # 02247644
Brendan@Platinumpre.com
562-244-0854

Platinum
Properties Real Estate

6201 E. BAYSHORE WALK
LONG BEACH, CA 90803
DRE # 02247644