



THE BUXMAN GROUP

37 Acre Madera County Vineyard

North of Ave 9 and East of Rd 32, Madera County

Carl Buxman
DRE LIC# 02209774

(559) 318-0818
Carl@TheBuxmanGroup.com

CJ Buxman
DRE LIC# 01770319

(559) 270-2287
CJ@TheBuxmanGroup.com

THE BUXMAN GROUP

SIZE

37 Acres

LOCATION

North of Ave 9 and East of Rd 32, Madera County

PLANTINGS

Grapes (Muscat Variety)

WATER

15 HP Pump and well with drip irrigation system
Located inside Madera Irrigation Water District

Groundwater Disclosure:

The Sustainable Groundwater Management Act (SGMA) requires groundwater basins to be sustainable by 2040. SGMA requires a Groundwater Sustainability Plan (GSP) by 2020. Said plans may limit ground water pumping. For more information please visit the SGMA website at www.sgma.water.ca.gov/portal/.

SOIL

Available Upon Request

BUILDINGS

None

LEGAL

Two Parcels: APN 047-330-021 19.96 Acres
APN 047-330-022 17.0 Acres

PRICE

\$1,300,000 (\$35,135 / Ac)
Cash desired.

REMARKS

This property with excellent soil and water can be converted to any desired crop.

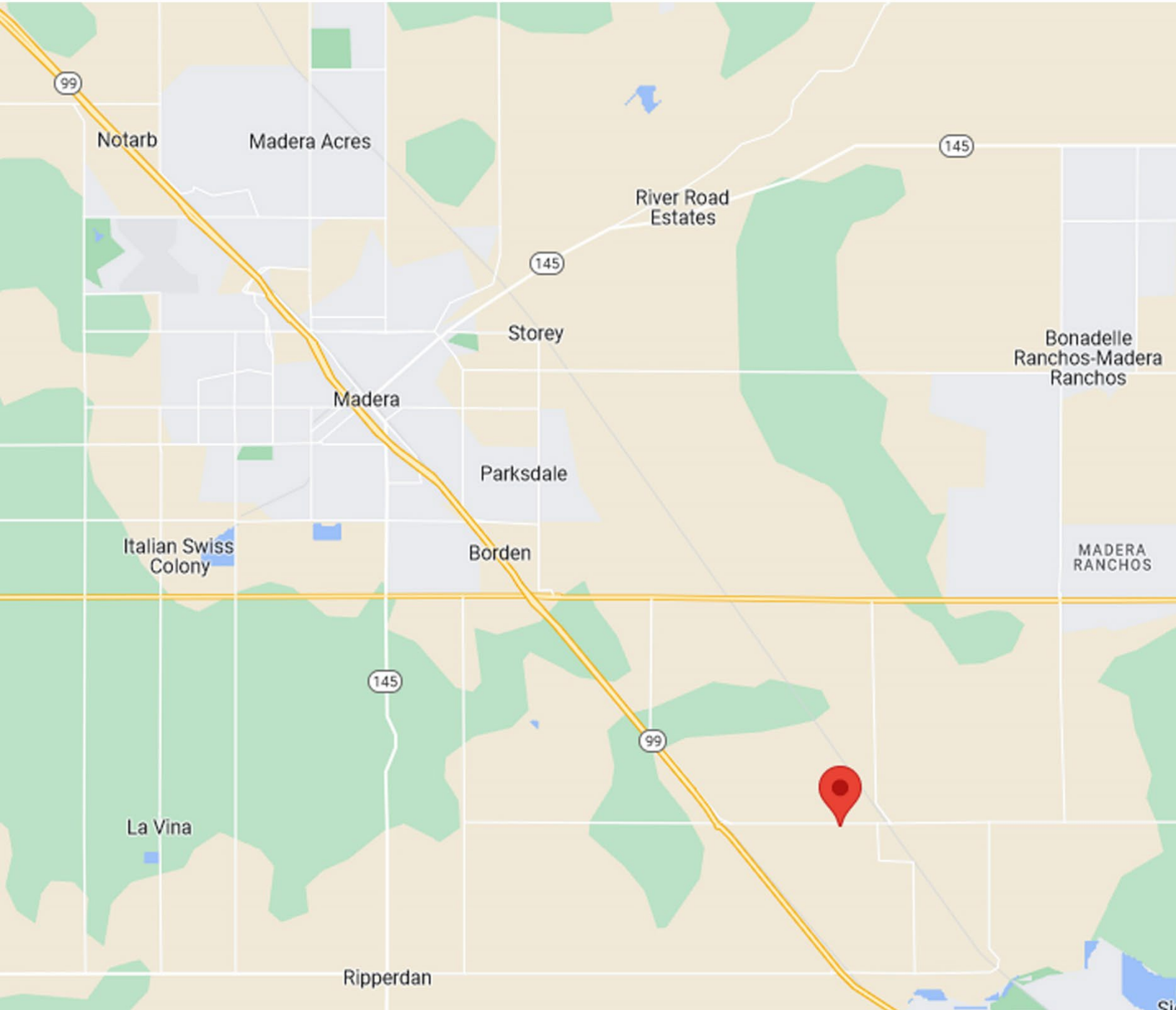
All information contained herein is deemed reliable but not guaranteed by seller nor broker and should be independently verified by potential buyers, We assume no liability for error or omissions.

CONTACT

Carl Buxman (559) 318-0818 / CJ Buxman (559) 270-2287



37 Acre Madera County Vineyard

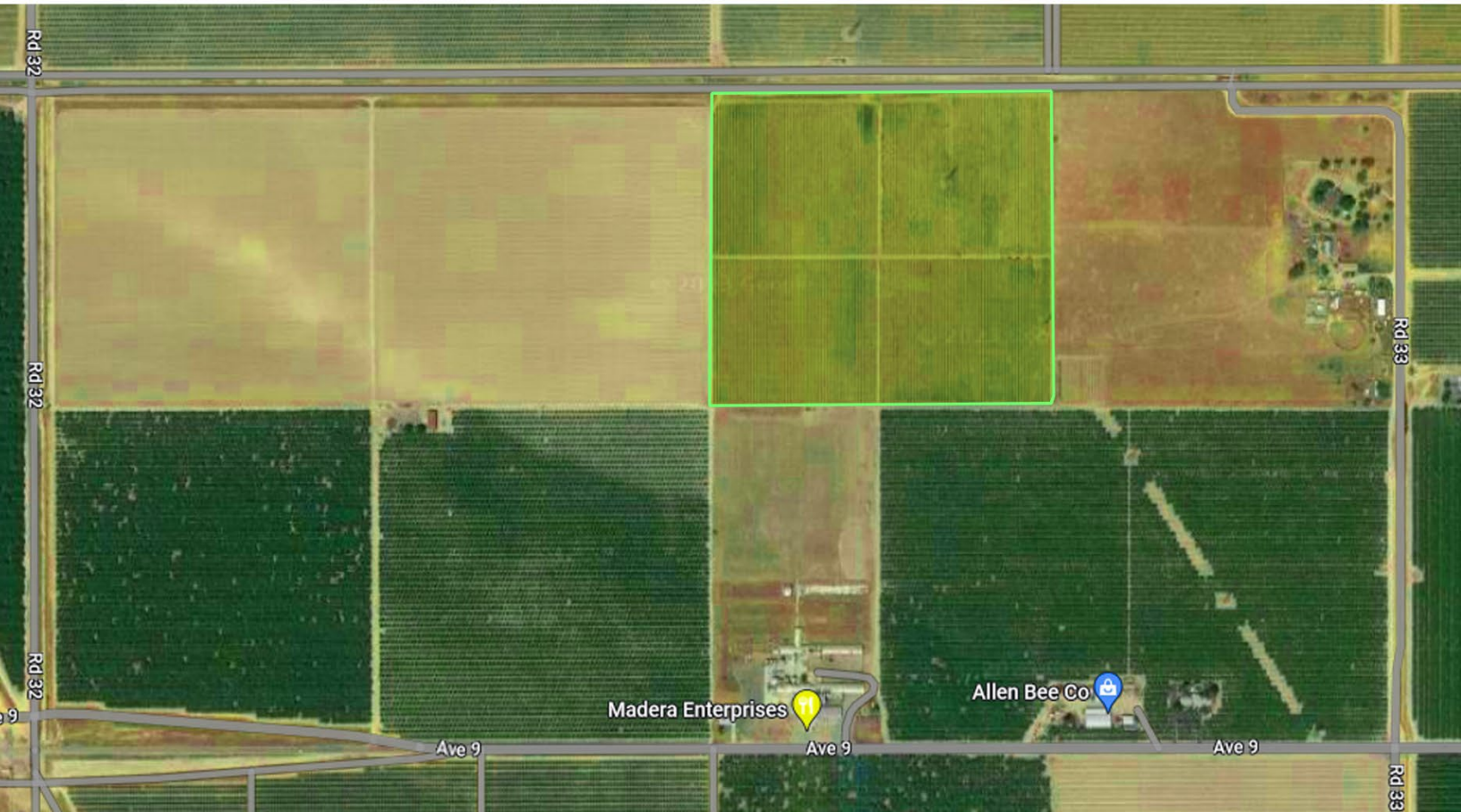


The information contained in this brochure is from reliable sources and is believed to be correct, but is NOT guaranteed.

10425 Kings River Rd, Reedley, CA 93654 | (559) 643-4788 | www.TheBuxmanGroup.com - CA | DRE LIC#: 02209774



37 Acre Madera County Vineyard



THE BUXMAN GROUP

37 Acre Madera County Vineyard

