

For Lease



JEFFREY R. BECKER CCIM . CPM . RPA

805.653.6794

jbecker@beckergrp.com

CA DRE #01213236

40 SOUTH ASH STREET | VENTURA, CA 93001 | 805.653.6794 | BECKERGRP.COM



PROPERTY DESCRIPTION

High tech office/warehouse building, located in Ventura's emerging "South of Market" mixed use office/commercial area. High identity signage opportunity. Great combination of open beam/open bay office space. Multiple private offices and extensive window lines. Variety of space options available. Abundant parking and elevator onsite.

OFFERING SUMMARY

Lease Rate:	\$1.75 - 1.90 SF/month (MG)
Available SF:	1,763 - 10,099 SF
Building Size:	65,887 SF

SPACES	LEASE RATE	SPACE SIZE	SPACE TYPE
1923-A2	\$1.90 SF/month	3,286 SF	Office
1923-A3	\$1.90 SF/month	1,782 SF	Office
1923-B2	\$1.90 SF/month	6,748 SF	Office
1957-A1	\$1.90 SF/month	4,267 SF	Office
1957-A2	\$1.90 SF/month	1,763 SF	Office
1957-C	\$1.90 SF/month	2,744 SF	Office
1923-A	\$1.75 SF/month	10,099 SF	50% Office / 50% Warehouse

CONTACT INFORMATION

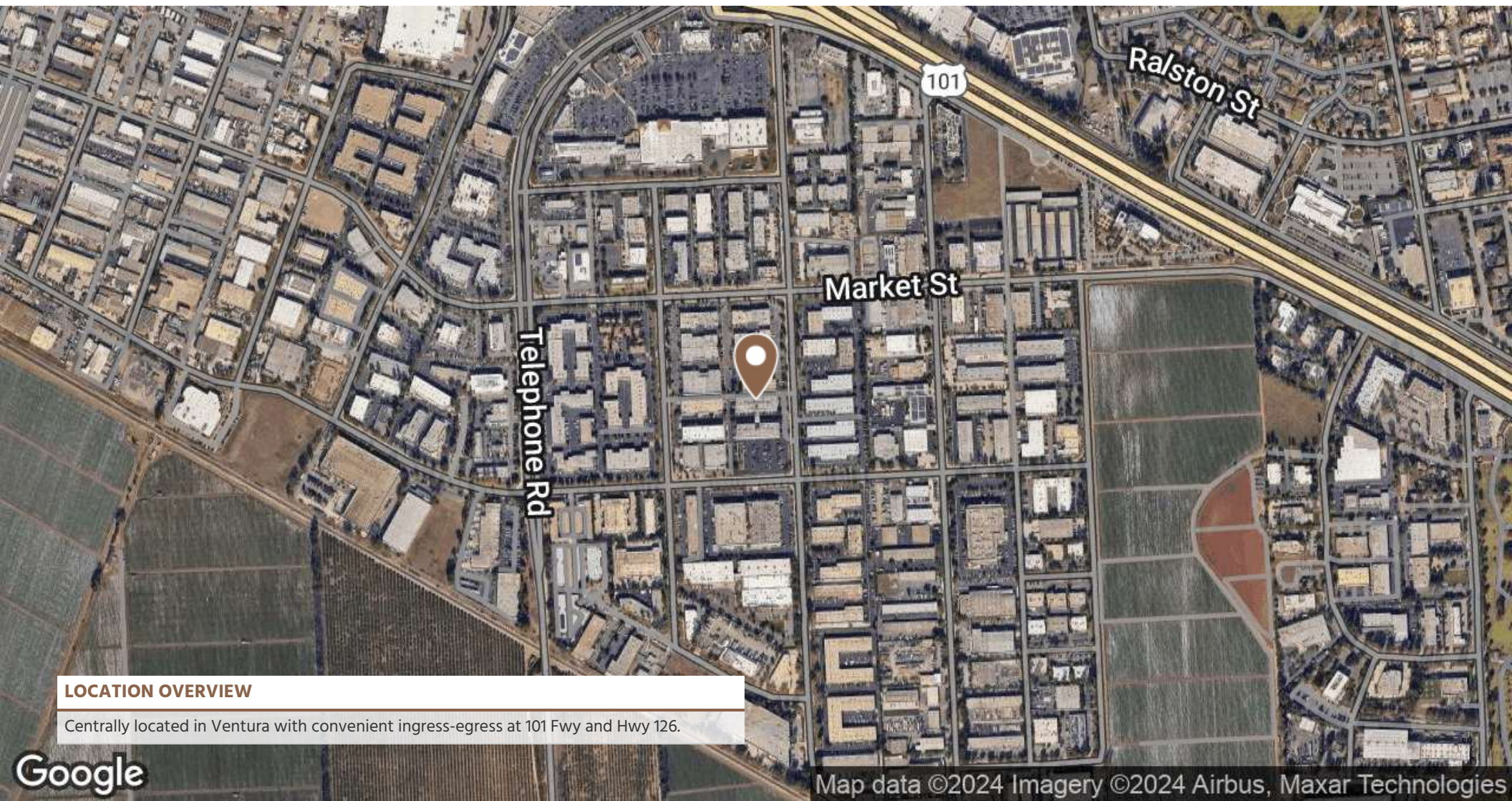
To find out more, or setup a tour, please contact:
 Jeffrey R. Becker | 805.653.6794 ext. 201 | jbecker@beckergrp.com
 Hutton Becker | 805.653.6794 ext. 212 | hbecker@beckergrp.com

JEFFREY R. BECKER CCIM . CPM . RPA

805.653.6794

jbecker@beckergrp.com

CA DRE #01213236



LOCATION OVERVIEW

Centrally located in Ventura with convenient ingress-egress at 101 Fwy and Hwy 126.

Google

Map data ©2024 Imagery ©2024 Airbus, Maxar Technologies

JEFFREY R. BECKER CCIM . CPM . RPA

805.653.6794

jbecker@beckergroup.com

CA DRE #01213236

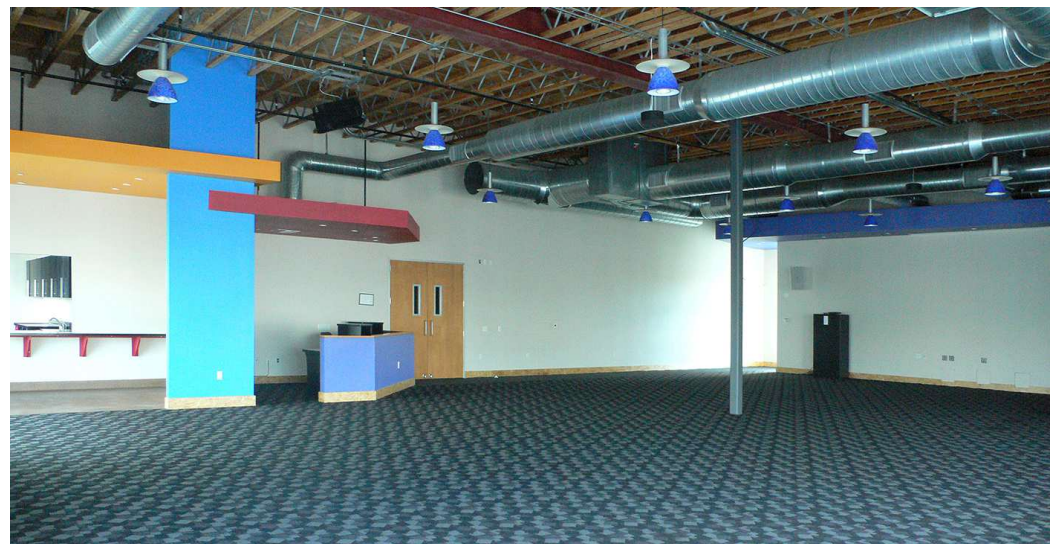


JEFFREY R. BECKER CCIM . CPM . RPA

805.653.6794

jbecker@beckergroup.com

CA DRE #01213236

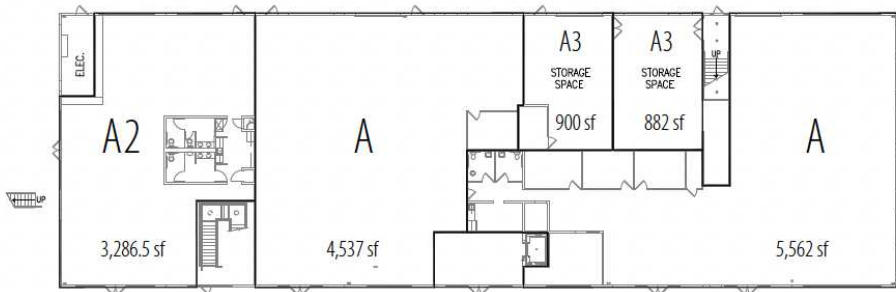


JEFFREY R. BECKER CCIM . CPM . RPA

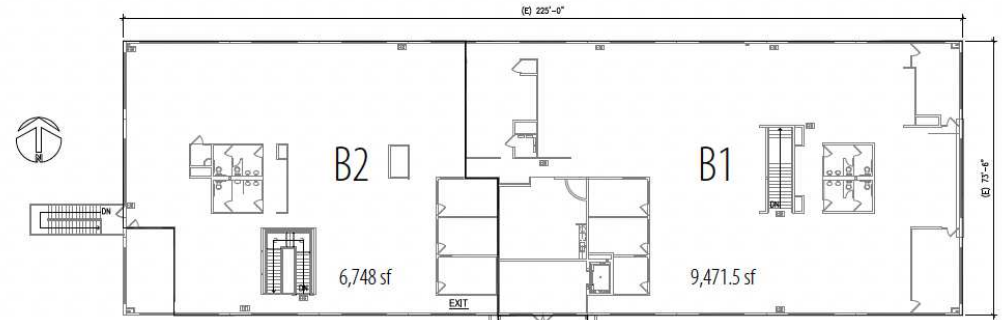
805.653.6794

jbecker@beckergroup.com

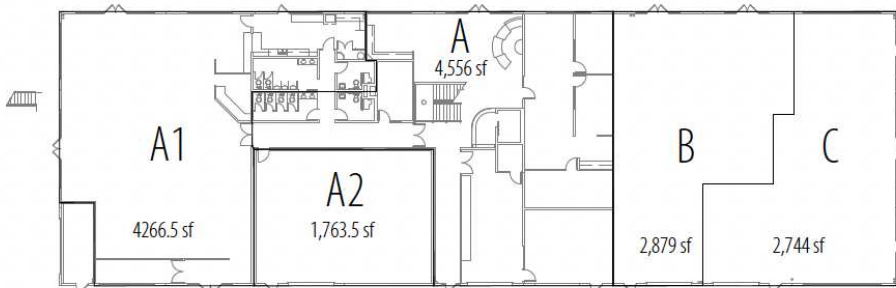
CA DRE #01213236



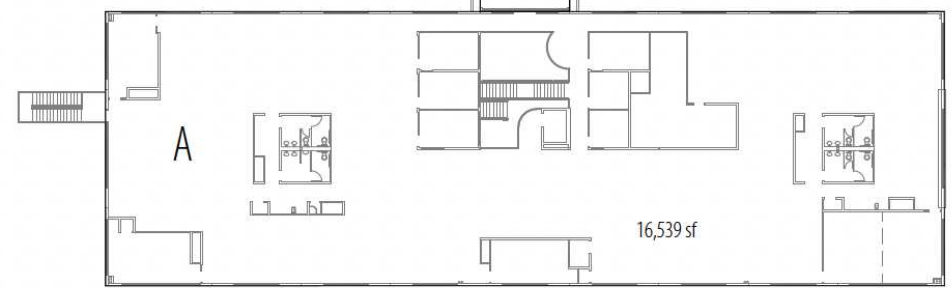
1923 Building – 1st Floor



1923 Building – 2nd Floor



1957 Building – 1st Floor



1957 Building – 2nd Floor

JEFFREY R. BECKER CCIM . CPM . RPA

805.653.6794

jbecker@beckergroup.com

CA DRE #01213236