

LAND FOR SALE
8.58 ± Acres

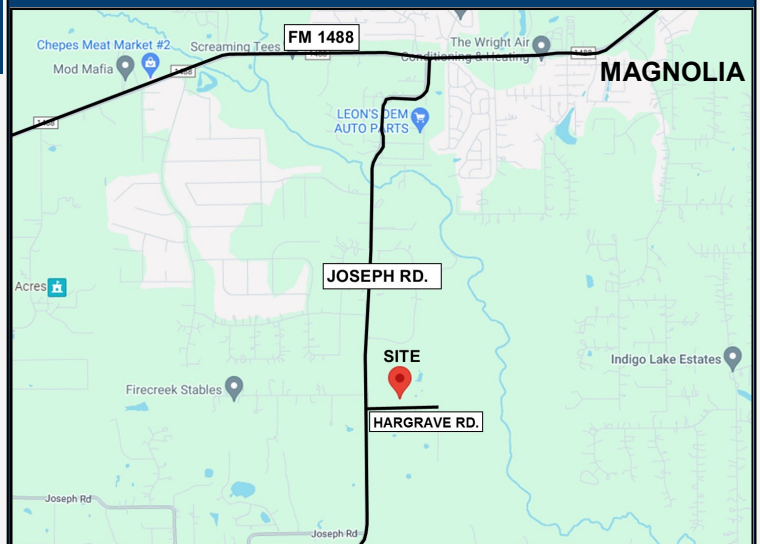
23484 HARGRAVE RD.
HOCKLEY, TX 77447



PROPERTY INFORMATION

- **Size:** 8.58 Acres
- **Frontage:** 290.41 feet on Hargrave Rd.
- **Terrain:** Flat, wooded with mix of pine and hardwood
- **Restrictions:** None
- **Schools:** Waller ISD
- No Flood plain

PRICE: \$575,000.00



Evtex Companies
5100 Westheimer R., Suite 155
Houston, TX 77056
281.955.5535

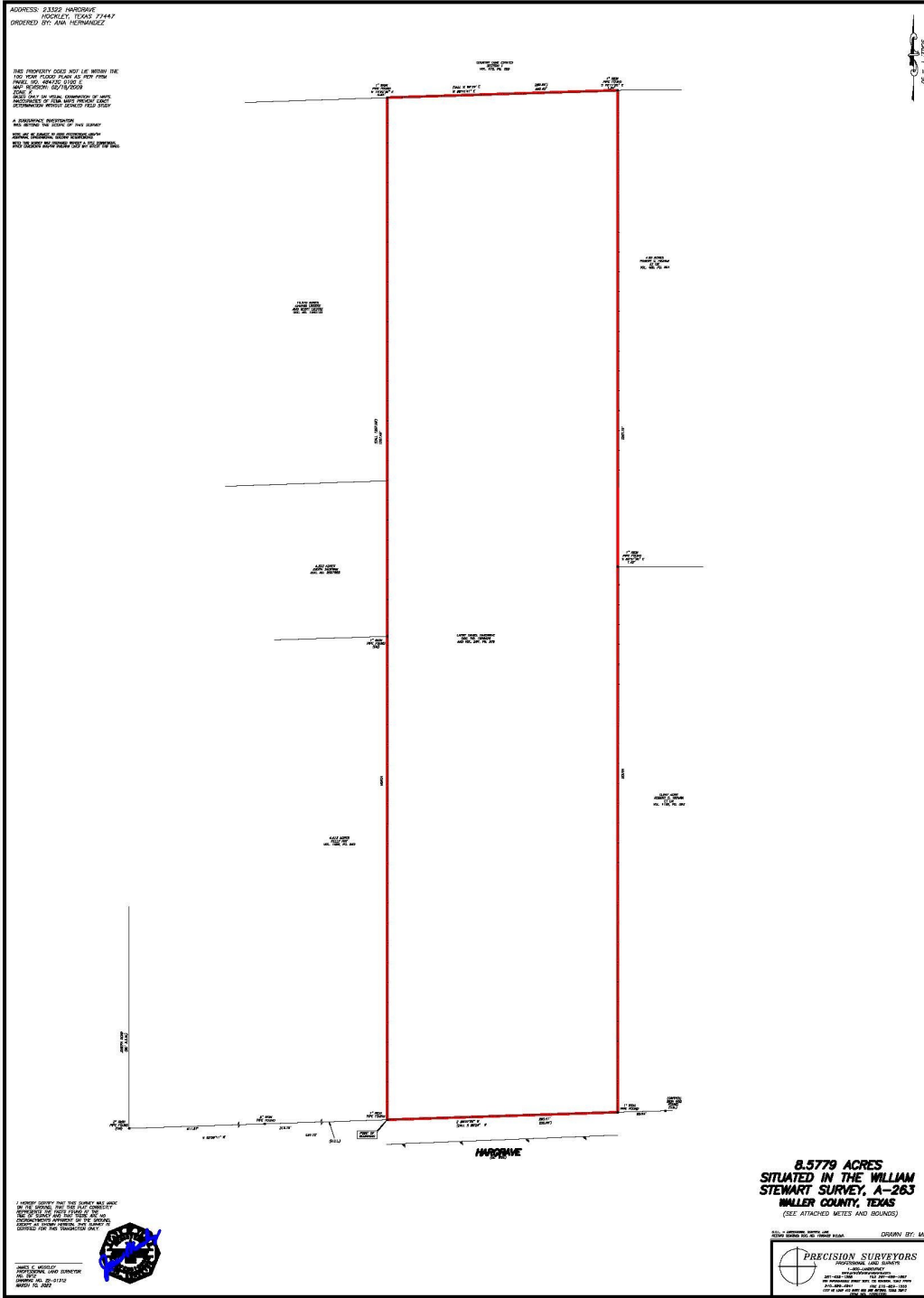
Contact Broker For More Information:

Joe Evans **Robyn Berry**
C: 713.822.2633 O: 713.629.5535
Email: Joe@evtex.com Email: Robyn@evtex.com

The information herein has been obtained from sources believed reliable. While we do not doubt its accuracy, we have not verified it and make no guarantee, warranty or representation about it. It is your responsibility to independently confirm its accuracy and completeness. Any projections, opinion, assumptions or estimates used are for example only and do not represent the current future performance of the property. The value of this transaction to you depends on tax and other factors which should be evaluated by your tax, financial, and legal advisors. You and your advisors should conduct a thorough independent investigation of this property to determine the suitability of the property for your needs.

LAND FOR SALE
8.58 ± Acres

23484 HARGRAVE RD.
HOCKLEY, TX 77447



Evtex Companies
5100 Westheimer R., Suite 155
Houston, TX 77056
281.955.5535

Contact Broker For More Information:
Joe Evans **Robyn Berry**
C: 713.822.2633 **O: 713.629.5535**
Email: Joe@evtex.com **Email: Robyn@evtex.com**

The information herein has been obtained from sources believed reliable. While we do not doubt its accuracy, we have not verified it and make no guarantee, warranty or representation about it. It is your responsibility to independently confirm its accuracy and completeness. Any projections, opinion, assumptions or estimates used are for example only and do not represent the current future performance of the property. The value of this transaction to you depends on tax and other factors which should be evaluated by your tax, financial, and legal advisors. You and your advisors should conduct a thorough independent investigation of this property to determine the suitability of the property for your needs.