

Development Opportunity

25.09 Acres

Property Information

- + Located along the main thoroughfare in the city of Ulysses
- + The site is composed of four parcels
- + + Frontage:
 - US-160: ±900'
 - Hampton Road: ±850'
- + Land use is currently agricultural

NEC HWY-160 & Cedar Street
Ulysses, KS 67880
Store #5755



Contact Us

Matt Rau
Senior Associate
+1 816 968 5831
matt.rau@cbre.com

Jim Sakanich
Senior Vice President
+1 312 608 3254
jim.sakanich@cbre.com

Thomas Flynn
Senior Vice President
+1 330 328 4334
thomas.flynn@cbre.com

Yoni Zvi
Senior Vice President
+1 414 708 1818
yoni.zvi@cbre.com

CBRE, Inc. | Kansas City
4520 Main Street, Suite 600
Kansas City, MO 64111
+1 816 756 3535
Licensed Real Estate Broker

Development Opportunity | 25.06 Acres

NEC HWY-160 & Cedar Street | Ulysses, KS 67880 | Store #5755

Available

Area Overview

Ulysses is located in the High Plains Region and is the Grant County. The area is rural with Ulysses being the main commercial hub within the county.



**Businesses
(5 Mi)**

350



**Hotels
(3 Mi)**

- 5 Hotels
- 199 Rooms



**Employees
(5 Mi)**

3,383



**Major
Employers**

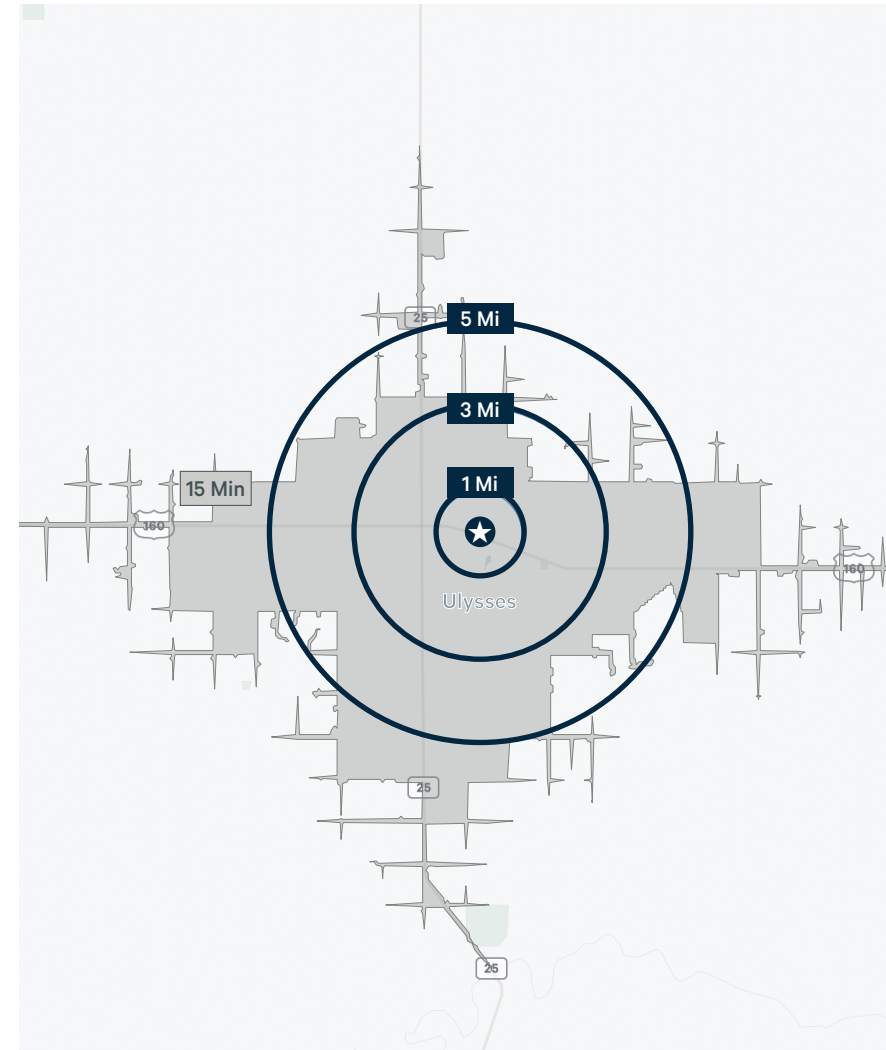
- Centura Bob Wilson Memorial Hospital



**Traffic
Generators**

- Centura Bob Wilson Memorial Hospital
- Lowe's Market
- McDonald's

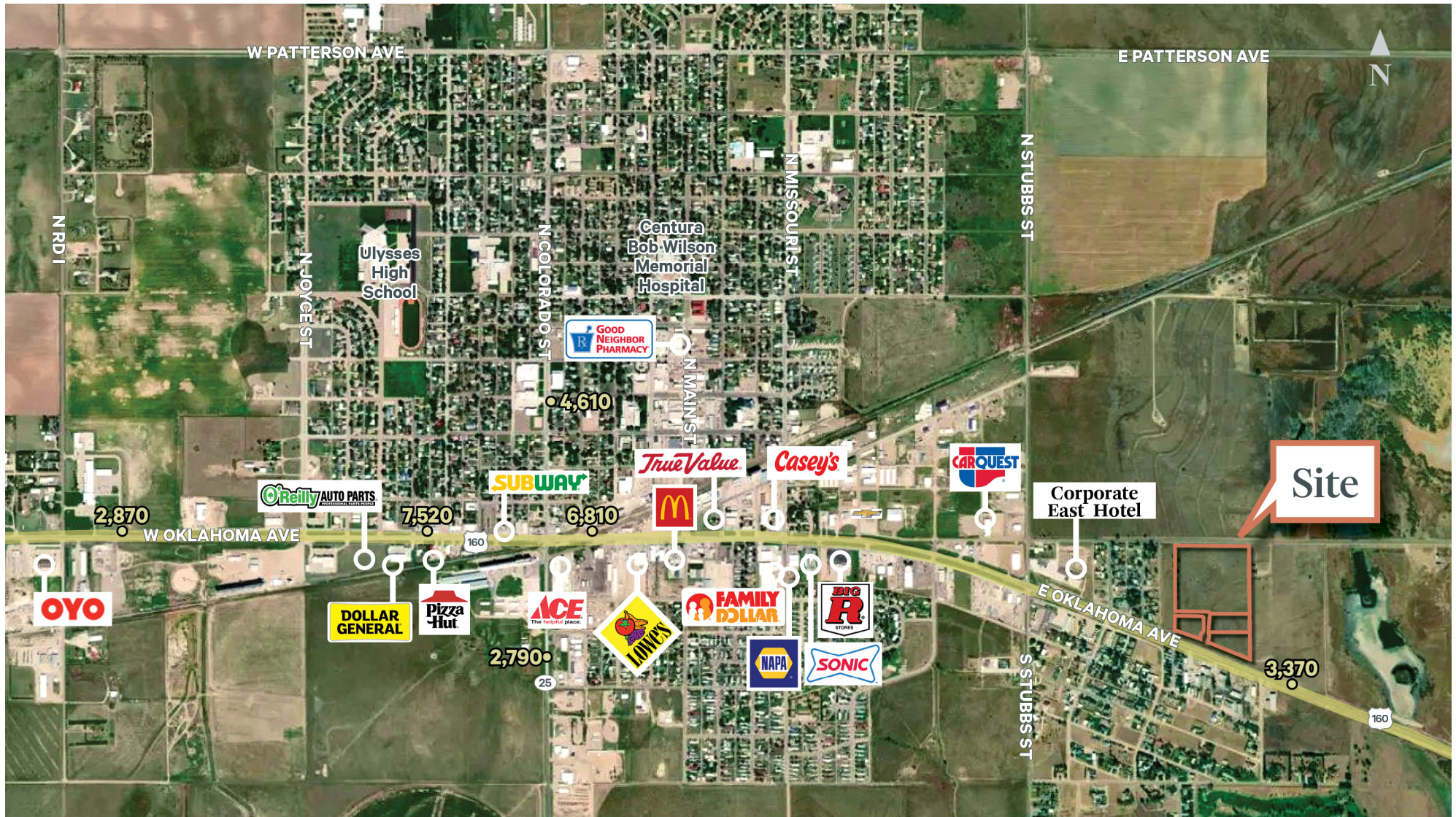
| 2023 Estimates | Total Population | Daytime Population | Total Households | Median HH Income | Median Age |
|-------------------|---------------------|-----------------------|---------------------|---------------------|---------------|
| 1 Mile | 1,463 | 1,211 | 473 | \$76,598 | 31.6 |
| 3 Miles | 6,042 | 6,121 | 2,195 | \$67,517 | 35.0 |
| 5 Miles | 6,409 | 6,409 | 2,334 | \$69,152 | 35.1 |
| 5 Minutes | 5,503 | 5,535 | 1,977 | \$63,926 | 34.6 |
| 10 Minutes | 6,534 | 6,531 | 2,381 | \$69,715 | 35.1 |
| 15 Minutes | 6,888 | 6,904 | 2,483 | \$70,724 | 35.1 |



Development Opportunity | 25.06 Acres

NEC HWY-160 & Cedar Street | Ulysses, KS 67880 | Store #5755

Available



© 2023 CBRE, Inc. All rights reserved. This information has been obtained from sources believed reliable, but has not been verified for accuracy or completeness. You should conduct a careful, independent investigation of the property and verify all information. Any reliance on this information is solely at your own risk. CBRE and the CBRE logo are service marks of CBRE, Inc. All other marks displayed on this document are the property of their respective owners, and the use of such logos does not imply any affiliation with or endorsement of CBRE. Photos herein are the property of their respective owners. Use of these images without the express written consent of the owner is prohibited. Modified: July 2023