

INDUSTRIAL UNITS FOR LEASE WOODLAND BUSINESS PARK

1064 Woodland Avenue, Suite I, Modesto, CA

LISTING DATA

AVAILABLE SF: 1,920± (Suite I)
OFFICE: 220± SF with one (1) restroom
ZONING: M (Industrial-Stanislaus County)
CONSTRUCTION: Concrete Tilt-Up
GRADE LEVEL: One(1) Door - 12' x 12'
CLEAR HEIGHT: 16'±

COMMENTS:

- Attractive glass store front and ample parking within complex
- Insulated shop/warehouse
- Includes reception/private office and one (1) restroom
- Ideal business park setting, allowing a variety of industrial and office users
- Easy access to HWY 99



ECONOMIC DATA

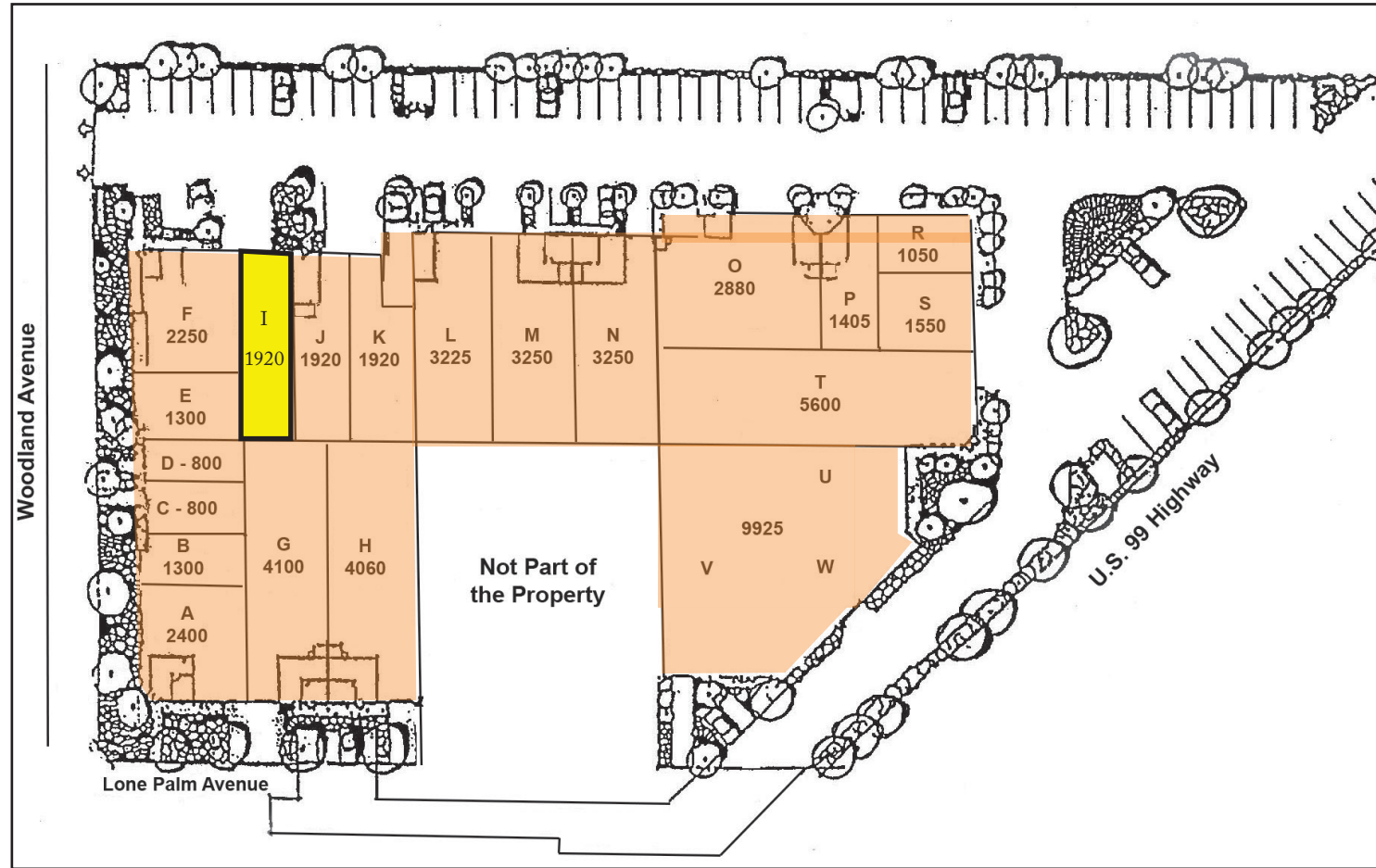
LEASE RATE: \$1.25 GROSS / PSF / PER MONTH

Jim Martin
BRE # 01214270
jmartin@lee-associates.com
D 209.983.4088
C 925.352.6948

Jake Cardinale
BRE #02190768
jcardinale@lee-associates.com
D 209.983.6831
C 209.480.5108

INDUSTRIAL UNITS FOR LEASE WOODLAND BUSINESS PARK

1064 Woodland Avenue, Suite I, Modesto, CA



Leased

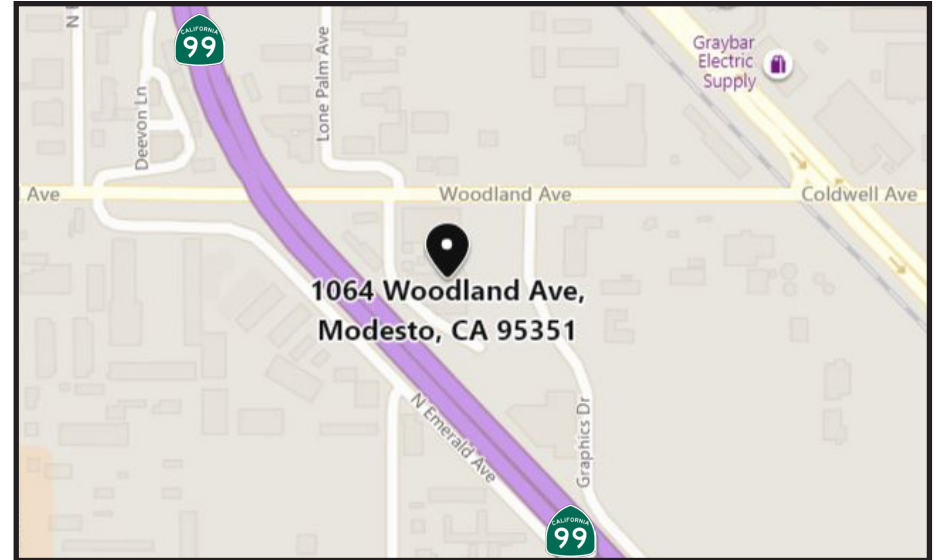
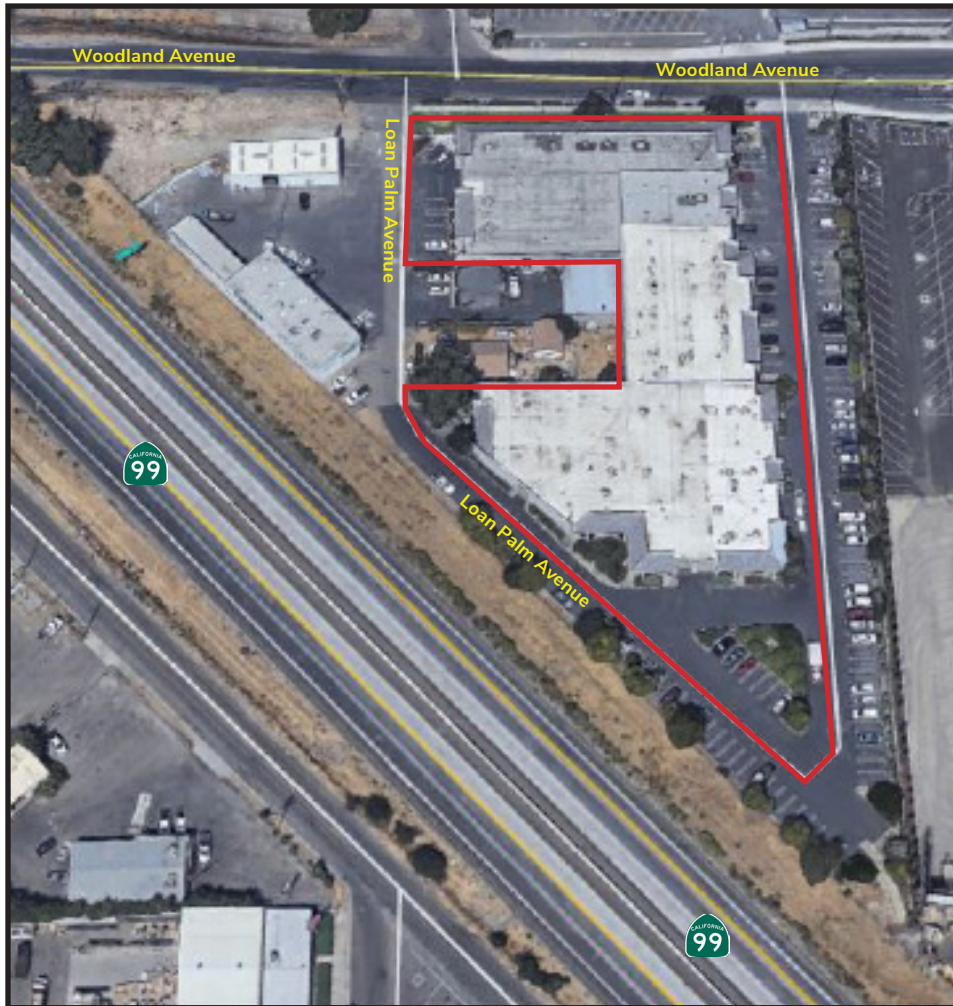
Available



All information furnished regarding property for sale, rental or financing is from sources deemed reliable, but no warranty or representation is made to the accuracy thereof and same is submitted to errors, omissions, change of price, rental or other conditions prior to sale, lease or financing or withdrawal without notice. No liability of any kind is to be imposed on the broker herein.

INDUSTRIAL UNITS FOR LEASE WOODLAND BUSINESS PARK

1064 Woodland Avenue, Suite I, Modesto, CA



Jim Martin
BRE # 01214270
jmartin@lee-associates.com
D 209.983.4088
C 925.352.6948

Jake Cardinale
BRE #02190768
jcardinale@lee-associates.com
D 209.983.6831
C 209.480.5108

All information furnished regarding property for sale, rental or financing is from sources deemed reliable, but no warranty or representation is made to the accuracy thereof and same is submitted as is, with all omissions, change of price, rental or other conditions prior to sale, lease or financing or withdrawal without notice. No liability of any kind is to be imposed on the broker herein.